

5533

WALNUT STREET

Shadyside
Pittsburgh, PA

 **HANNA**
COMMERCIAL REAL ESTATE

A MEMBER OF
CHAINLINKS
RETAIL ADVISORS



PROPERTY DETAILS

- Up to 12,000 SF retail/office available with dedicated access from Walnut Street
- Floor to ceiling windows throughout – excellent natural light
- Located in the epicenter of Shadyside neighborhood on Walnut Street
- Walnut Street is home to some of the best retailers in the world
- Ample parking nearby with a walk score of 96

DEMOGRAPHICS

within a 3 mile radius

EST. POPULATION

173,411

EST. AVG. INCOME

\$80,379

EST. HOUSEHOLDS

80,340

CONSUMER SPENDING

\$2.1B

WALNUT STREET RETAILERS



patagonia

HENNE
JEWELERS FOR LIFE



SEPHORA

ROLEX

J. Jill



BANANA
REPUBLIC

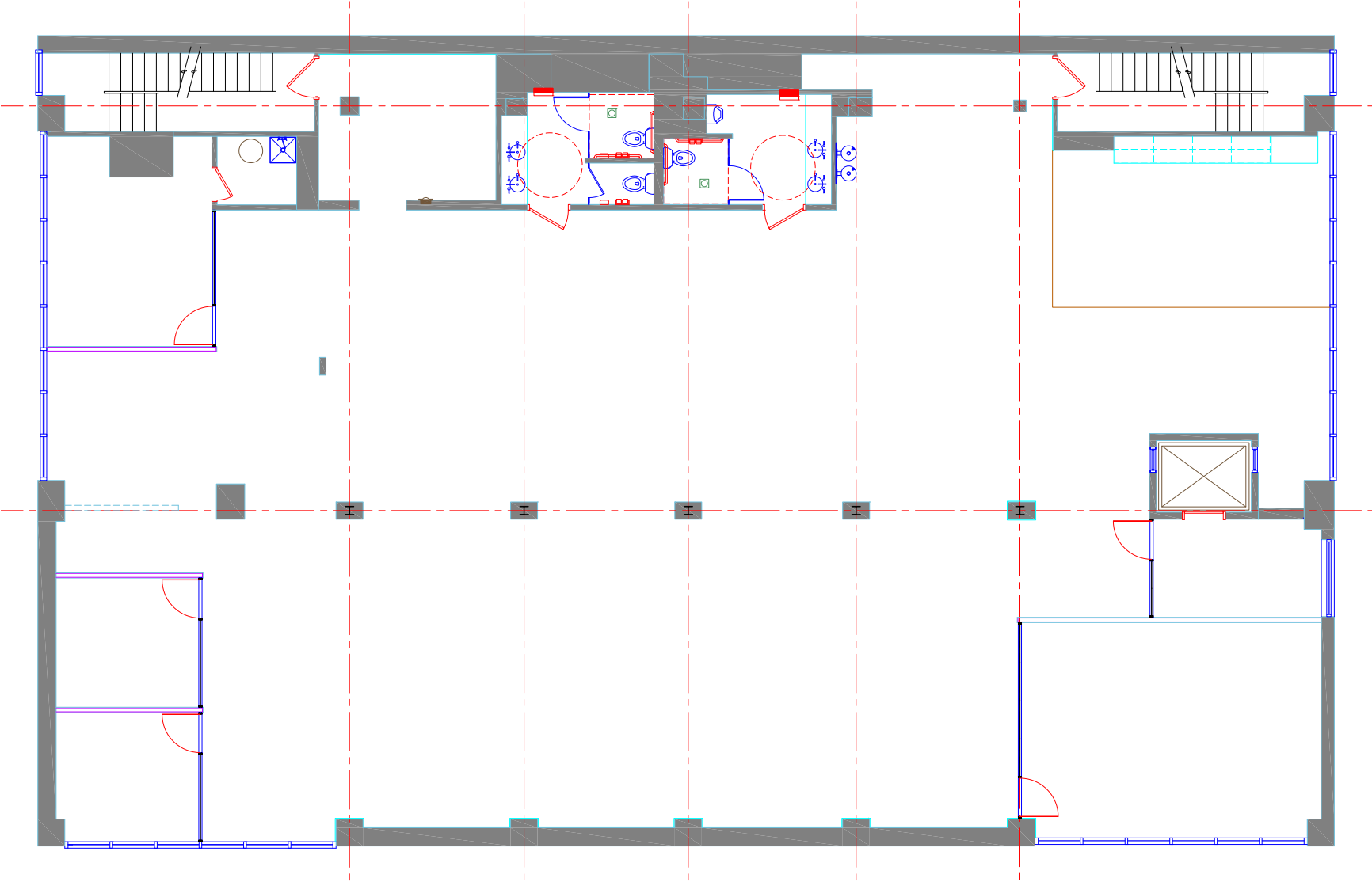
KENDRA SCOTT

GAP

and many more



SAMPLE FLOOR PLAN



WALNUT STREET



Retail Map Walnut Street





WALNUT STREET

Premier shopping and dining options, Walnut Street is a destination location for ideal retail experience. Located in the affluent Shadyside neighborhood of Pittsburgh, Pennsylvania, Walnut Street is best known for its upscale shopping, fine dining, and private boutiques.

With a perfect mix of national retailers like Apple, Sephora, Athleta, Lululemon, and Banana Republic, blended with independent boutiques like Eytique, Choices, and Roberta Weisberg. Dining options are plentiful. Enjoy the best Italian food at Girasole. Chinese at China Palace. Japanese at Sushi Too. Mexican at Mexican at Tocayo Taqueria and Tequila Bar or try Shady Grove for American cuisine. For breakfast or coffee there are no shortage or great options including Pamela's, Bruegger's Bagels, Prantl's Bakery, Starbucks and Coffee Tree Roasters.



Contact:

Craig Polard
cpolard@hannacre.com
412-261-2200

Jake Vogel
jvogel@hannacre.com
412-261-2200

5535 WALNUT STREET

Shadyside
Pittsburgh, PA

 **HANNA**
COMMERCIAL REAL ESTATE

A MEMBER OF
CHAINLINKS
RETAIL ADVISORS