



# Vue Research Center

530 FAIRVIEW AVENUE N | SEATTLE

CBRE

# Sublease Highlights

HIGH END LABORATORY AND OFFICE SPACE

---



15,000-34,496 RSF



Available Q2 2024

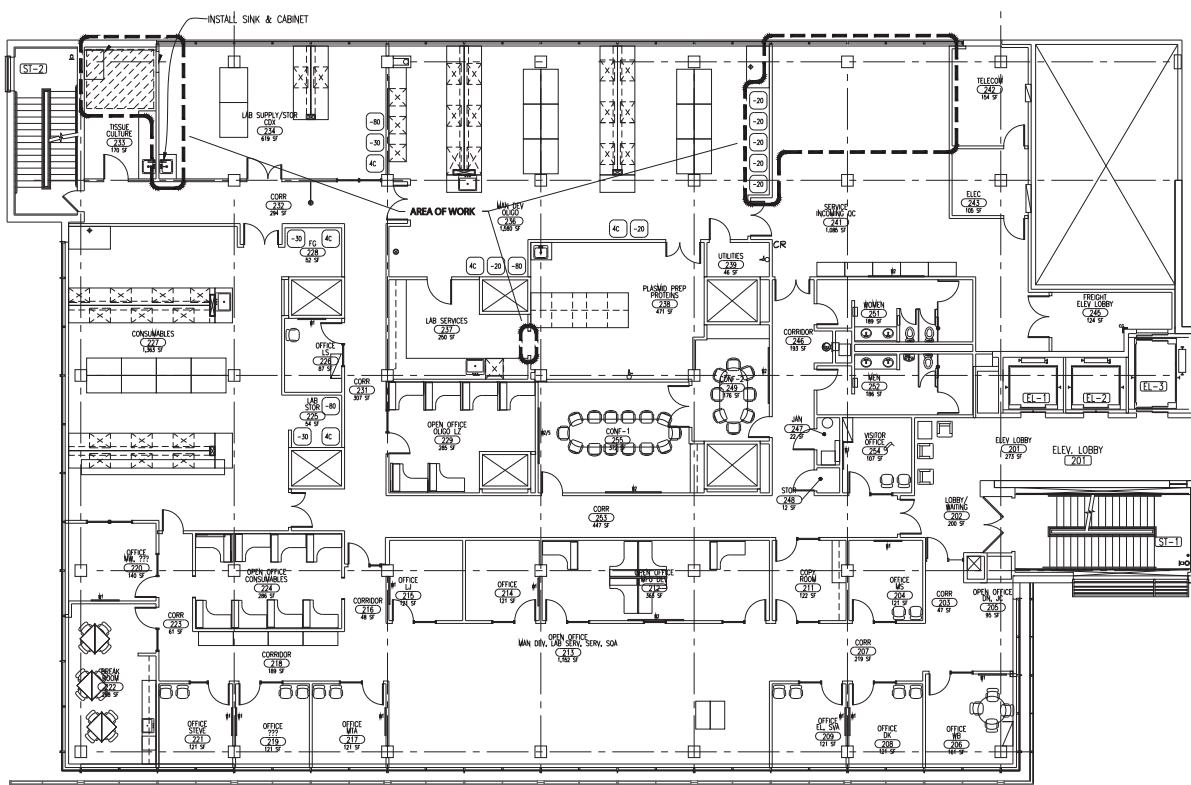


Master Lease expires  
February 12, 2026



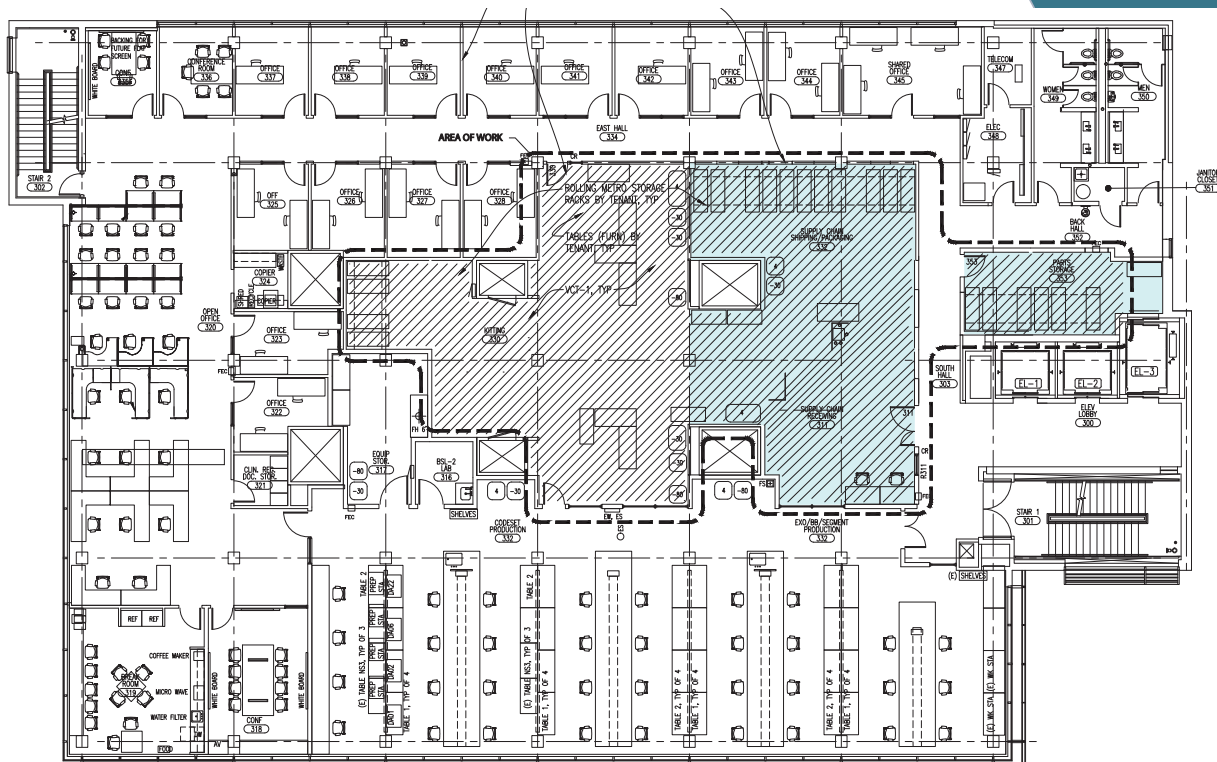
# Floorplan

## FLOOR 2



# Floorplan

## FLOOR 3

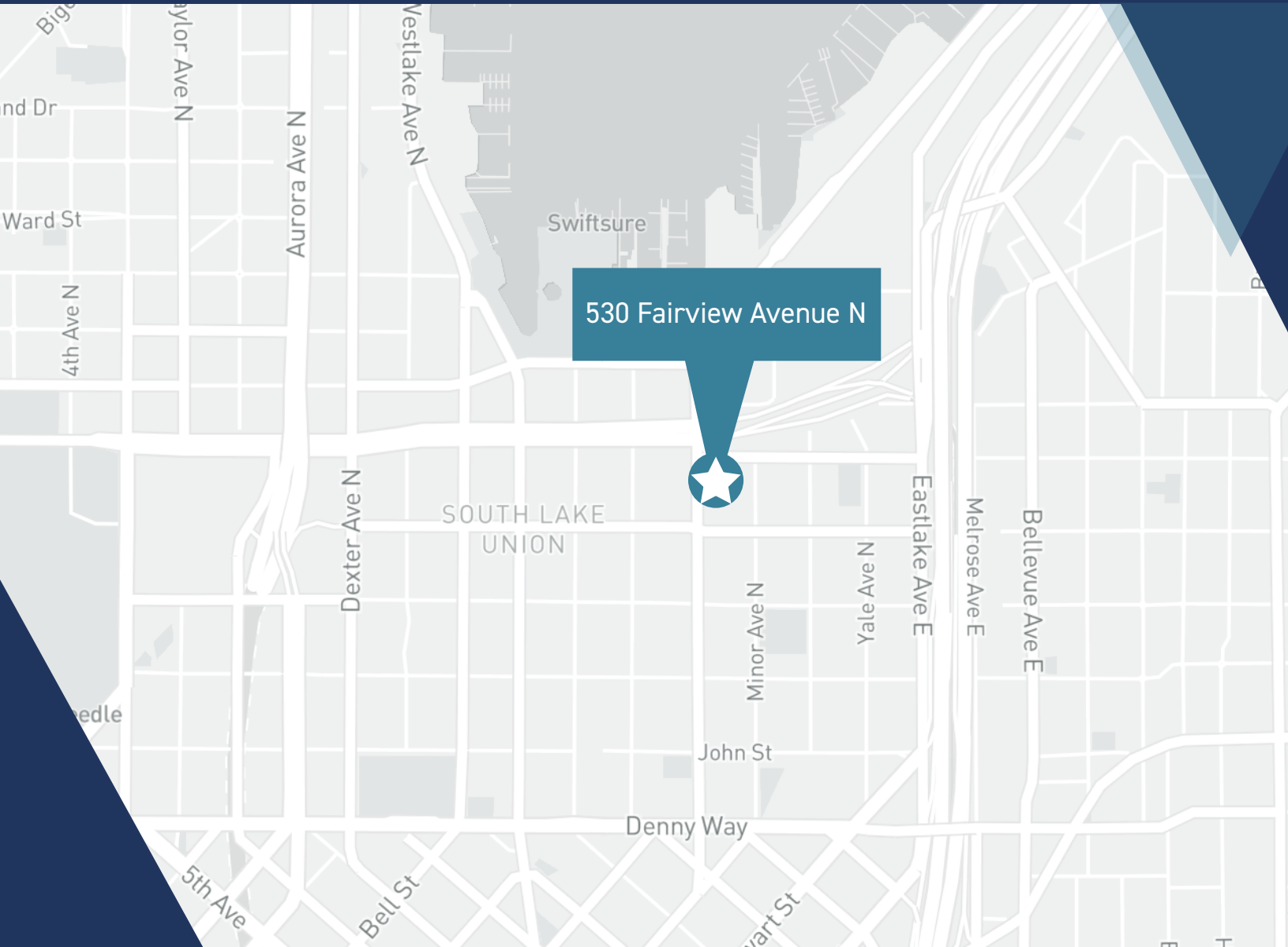


Area not included





# Location



## Contact Us

**HANS KEMP**

Executive Vice President  
+1 206 292 6049  
hans.kemp@cbre.com

**AUSTIN ARPER**

First Vice President  
+1 206 292 6148  
austin.arper@cbre.com

**CBRE**

© 2023 CBRE, Inc. All rights reserved. This information has been obtained from sources believed reliable, but has not been verified for accuracy or completeness. You should conduct a careful, independent investigation of the property and verify all information. Any reliance on this information is solely at your own risk. CBRE and the CBRE logo are service marks of CBRE, Inc. All other marks displayed on this document are the property of their respective owners, and the use of such logos does not imply any affiliation with or endorsement of CBRE. Photos herein are the property of their respective owners. Use of these images without the express written consent of the owner is prohibited.