



# 1008 ROUTE 34

MATAWAN, NEW JERSEY

THE SHOPPE'S AT MATAWAN

# 1,334 SF FOR LEASE

**SHANE WIERKS**

swierks@jefferyrealty.com

C: 908.581.7781

O: 908.668.9600



**JEFFERY REALTY**  
Retail Specialist

52 Millburn Ave. • Springfield, NJ 07081 • T: 908.668.9600 • F: 908.668.5225 • [www.JefferyRealty.com](http://www.JefferyRealty.com)

All information is from sources deemed reliable and is submitted subject to errors, omissions, change of price, terms, prior sales and withdrawals.







TENNANT	SF
A1 Papa John's Pizza	1,880
A2 Bollywood Bistro	1,880
A3 Liberty City Dispensary	1,365
<b>A4 AVAILABLE</b>	<b>1,334</b>
A5 Sahara 34 Restaurant	2,870
A6 Cleaners	1,350
A7 Doggie Day Care	3,760
B1 JNS Dental/ Elegant Smiles	1,365
B2 Skora Beauty	1,365
B3 Tile Unlimited Inc.	2,730
B4 Trinity Physical Therapy	2,700
B5 Save Rite Liquors	4,095
B6 Siam Smiles	1,365
B7 Allstate	1,350
B8 Plum House Unit #3	1,365
B9 Plum House Units #1 & #2	2,730

# 1008 ROUTE 34 MATAWAN, NEW JERSEY

# SITE INFORMATION

**GLA:** 33,504 SF  
**AVAILABLE:** 1,334 SF  
**RENT:** CALL FOR QUOTE  
**NNN:** \$7.75 PSF

**FRONTAGE:** 457' ON RT. 34  
**PARKING:** 60 SPACES BLDG. A  
**TRAFFIC:** 18,041 VPD RT. 34

**NOTES:**

- UNDER NEW OWNERSHIP
- NEWLY RENOVATED FACADE
- HIGHLY VISIBLE PYLON ON ROUTE 34





**1008 ROUTE 34** MATAWAN, NEW JERSEY

**SITE PHOTOS**

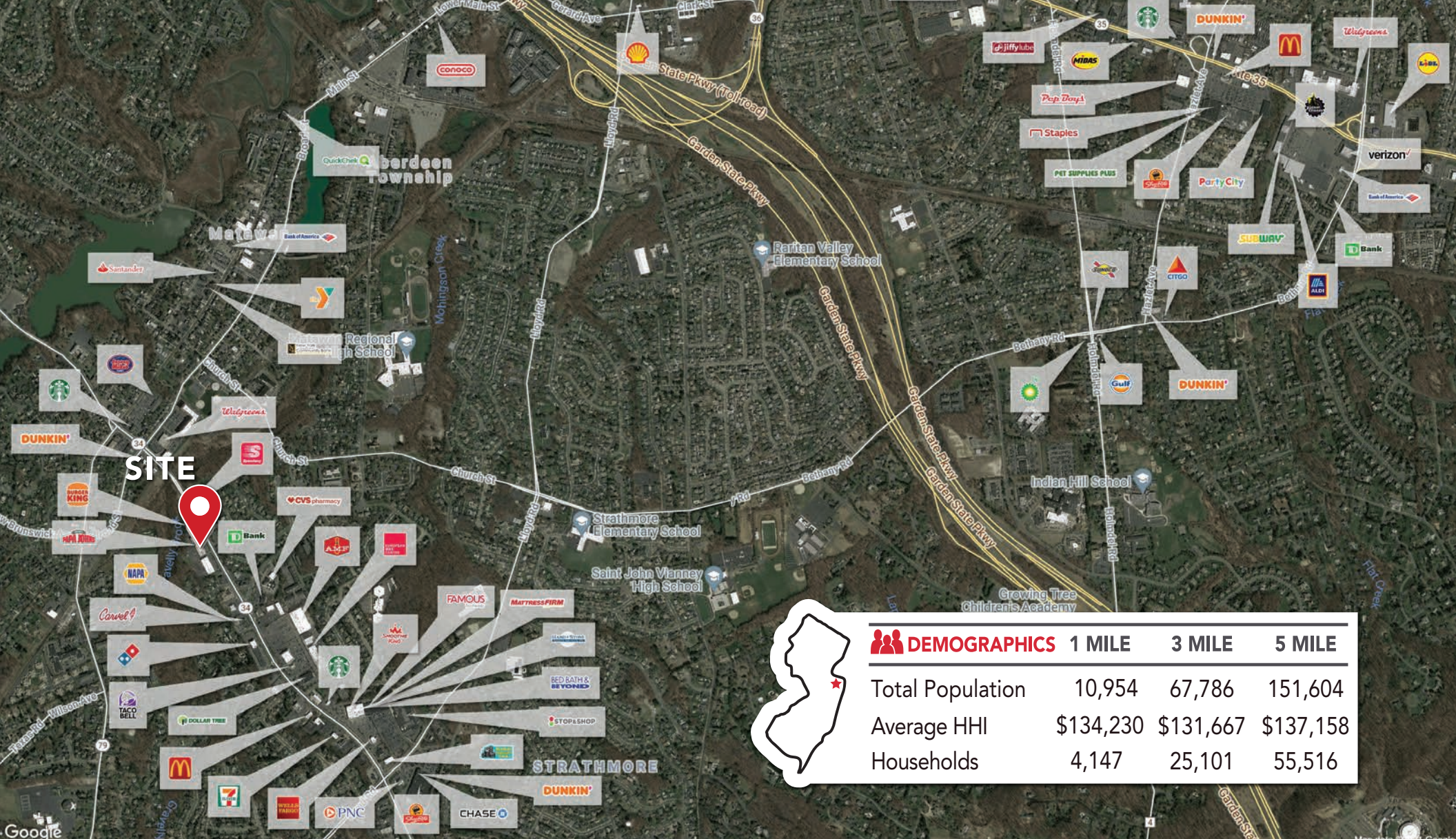


**JEFFERY REALTY**  
Retail Specialist

52 Millburn Ave. • Springfield, NJ 07081 • T: 908.668.9600 • F: 908.668.5225 • [www.JefferyRealty.com](http://www.JefferyRealty.com)  
All information is from sources deemed reliable and is submitted subject to errors, omissions, change of price, terms, prior sales and withdrawals.







# 1008 ROUTE 34 MATAWAN, NEW JERSEY

# MARKET AERIAL