

16487 JEB STUART HWY

Abingdon, Virginia

6.81 ACRES | FOR SALE



- Four parcels of land
- Priced at land value alone
- Zoned B2 business
- Good road frontage
- Direct access to I-81
- \$725,000

**CUSHMAN &
WAKEFIELD**
THALHIMER

16487 JEB STUART HWY

Abingdon, Virginia

6.81 ACRES | FOR SALE

PREMISES

Located off Rt. US 58 &
US Rt. 11

\$725,000

PARCEL# 106-16-3

1.44 ACRES

PARCEL# 106-16-4

1.99 ACRES

PARCEL# 106-16-5

1.08 ACRES

PARCEL# 106-16-6

2.3 ACRES



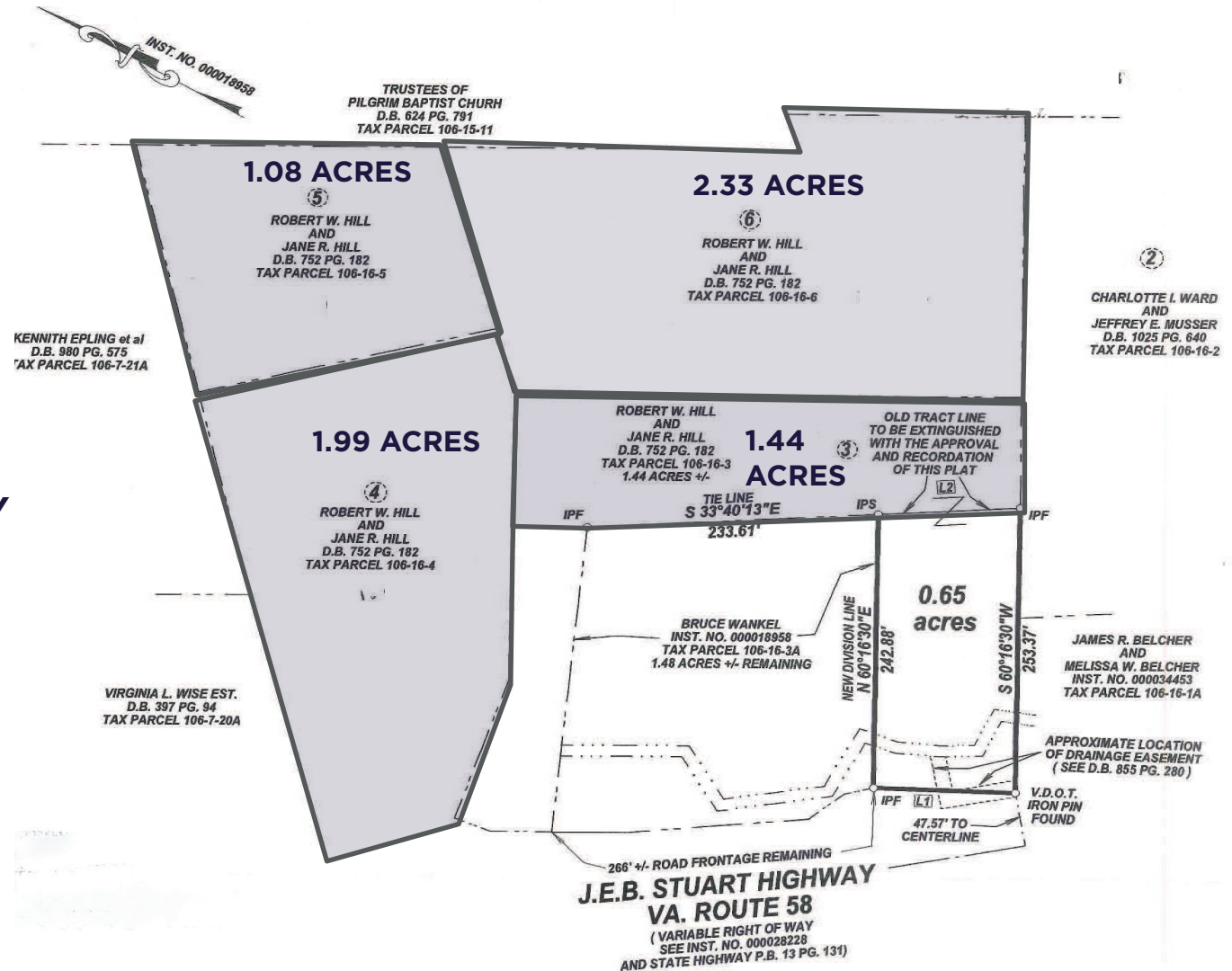
16487 JEB STUART HWY

Abingdon, Virginia

SITE PLAN

6.81 ACRES | FOR SALE

6.81 ACRES
ZONED B2
\$725,000
AVAILABLE IMMEDIATELY



16487 JEB STUART HWY

Abingdon, Virginia

AERIAL MAP

6.81 ACRES | FOR SALE



16487 JEB STUART HWY

Abingdon, Virginia

BUILDING PHOTOS

6.81 ACRES / FOR SALE



16487 JEB STUART HWY

Abingdon, Virginia

For more information, please contact:

Boyd Johnson | Vice President | boyd.johnson@thalhimer.com | 540 767 3002
Wyatt Poats | Senior Associate | wyatt.poats@thalhimer.com | 540 767 3008



Thalhimer
310 First Street, Suite 300
Roanoke, VA 24011
thalhimer.com

Independently Owned and Operated / A Member of the Cushman & Wakefield Alliance

Cushman & Wakefield | Thalhimer © 2025. No warranty or representation, express or implied, is made to the accuracy or completeness of the information contained herein, and same is submitted subject to errors, omissions, change of price, rental or other conditions, withdrawal without notice, and to any special listing conditions imposed by the property owner(s). As applicable, we make no representation as to the condition of the property (or properties) in question.