

FISHERS STATION

116TH & ALLISONVILLE – FISHERS, IN
STORE: J-944



About The Property

- Kroger relocated across the street into a new 120k sf store
- 62,426 SF former Kroger Building and land for sale
- 10.60 acres - includes all parking for center
- 30k+ sf adjacent shops and outlots owned by others, including:
 - Pet Supplies Plus
 - Papa John's
 - PNC Bank
 - Great Clips
 - Krav Maga
 - Starbucks
 - PetVet
 - Dunkin
 - McDonalds

FORMER KROGER FOR SALE
7272 Fishers Crossing Drive

BRADLEY COMPANY

Beth Patterson, CCIM
Senior Vice President | Principal
T: 317.663.6558 C: 317.514.8454
bpatterson@bradleyco.com

Listed
By



FISHERS STATION

116TH & ALLISONVILLE – FISHERS, IN

STORE: J-944



Property Description

- Land Size: 10.6 Acres
- Three access points
- Pylon and monument signage available
- Dense residential and neighborhood retail



BRADLEY COMPANY

Beth Patterson, CCIM

Senior Vice President | Principal

T: 317.663.6558 C: 317.514.8454

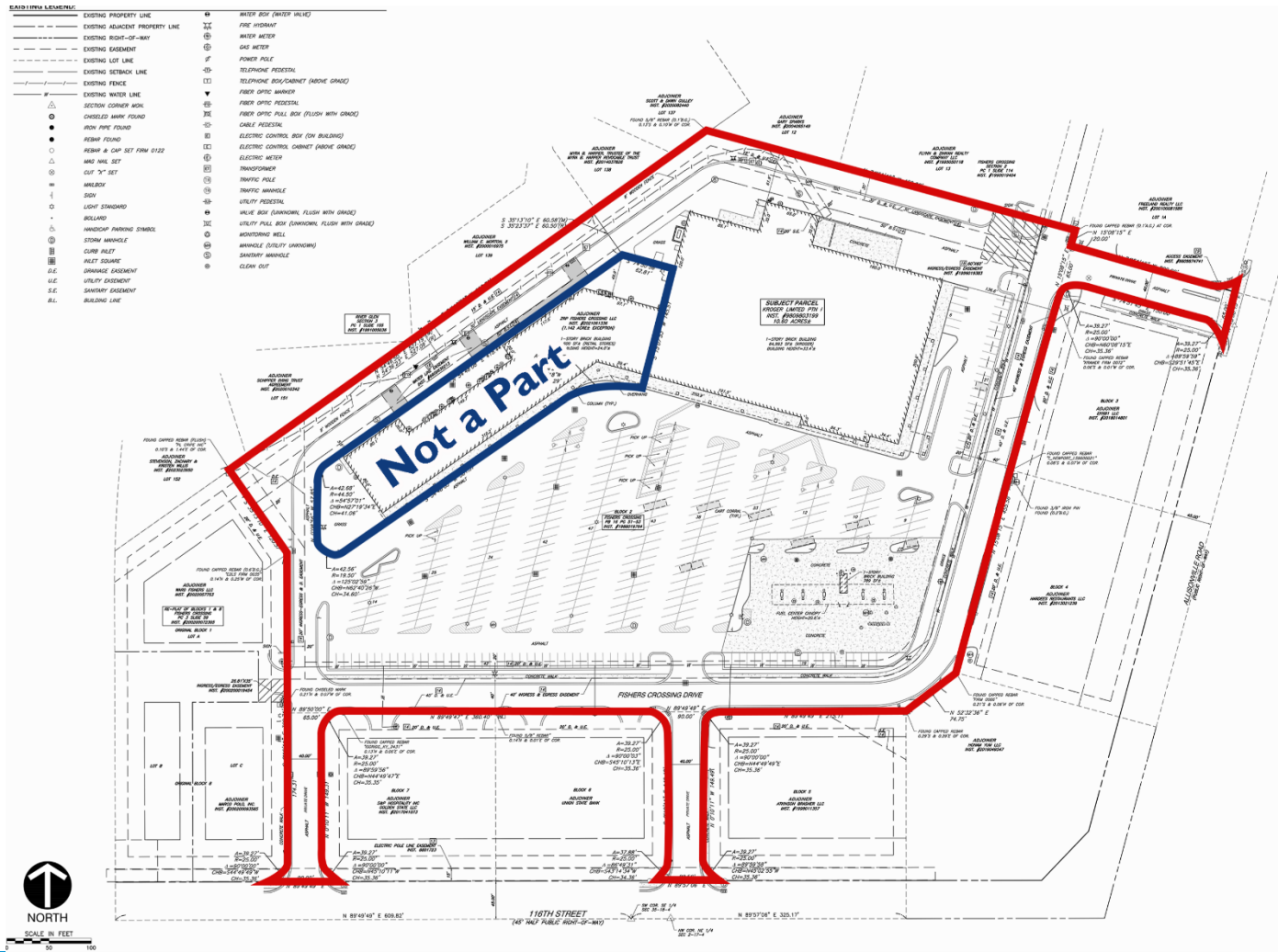
bpatterson@bradleyco.com

Listed
By



FISHERS STATION

116TH & ALLISONVILLE – FISHERS, IN
STORE: J-944



2024 Demographics

POPULATION

1 Mile	3 Miles	5 Miles
8,184	62,119	171,385

MEDIAN AGE

1 Mile	3 Miles	5 Miles
40.6	38.3	38.2

COLLEGE EDUCATION

1 Mile	3 Miles	5 Miles
55.5%	64.1%	63.8%

MEDIAN HH INCOME

1 Mile	3 Miles	5 Miles
\$100,260	\$119,792	\$118,773

DAYTIME POPULATION

1 Mile	3 Miles	5 Miles
5,143	52,505	147,656

BRADLEY COMPANY

Beth Patterson, CCIM

Senior Vice President | Principal

T: 317.663.6558 C: 317.514.8454

bpatterson@bradleyco.com

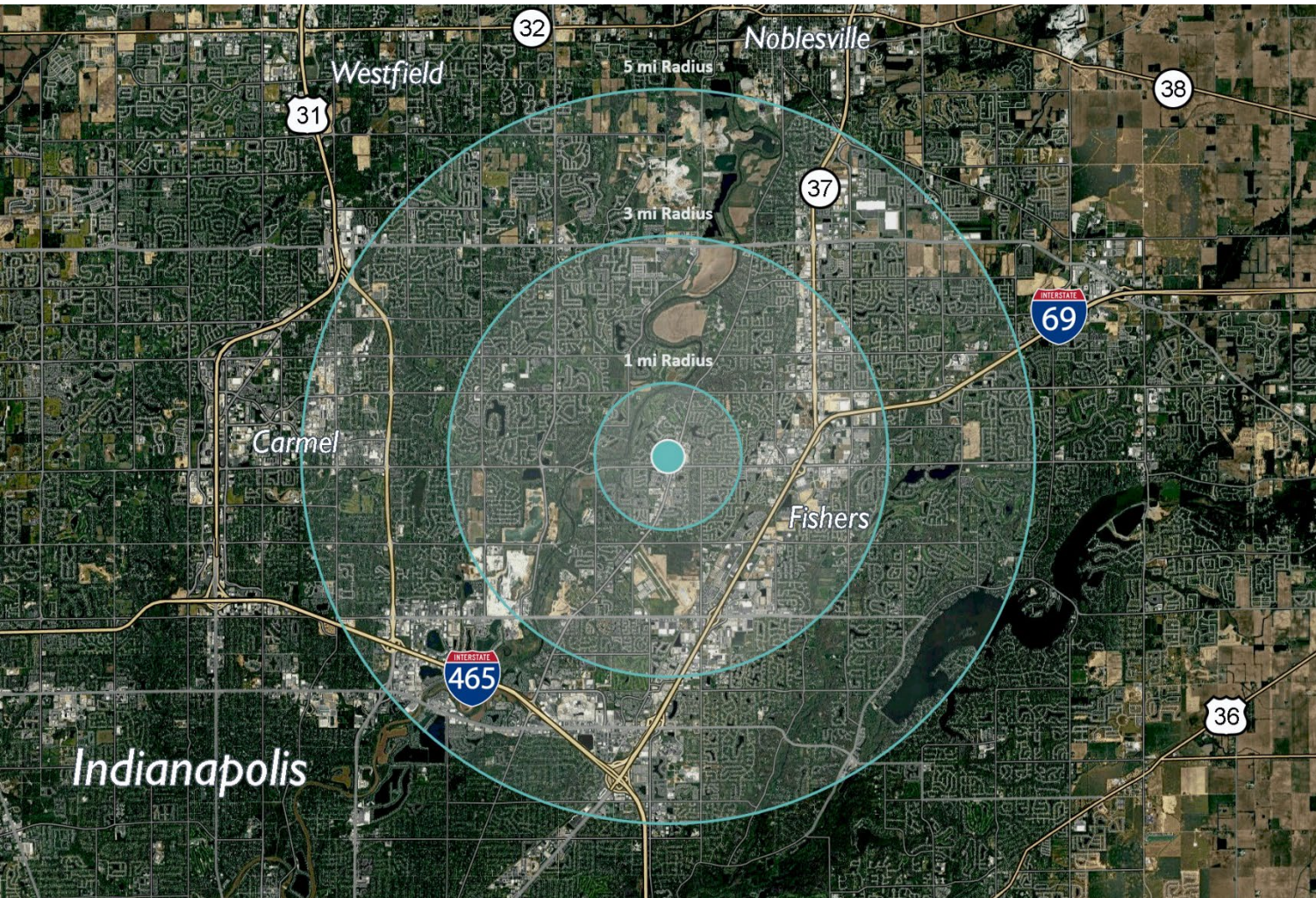
Listed
By



© 2019 CBRE, Inc. All rights reserved. This information has been obtained from sources believed reliable, but has not been verified for accuracy or completeness. You should conduct a careful, independent investigation of the property and verify all information. Any reliance on this information is solely at your own risk. CBRE and the CBRE logo are service marks of CBRE, Inc. All other marks displayed on this document are the property of their respective owners. Photos herein are the property of their respective owners. Use of these images without the express written consent of the owner is prohibited.

FISHERS STATION

116TH & ALLISONVILLE – FISHERS, IN
STORE: J-944



Fishers, Indiana

- Fishers is ranked #1 as the “Best Affordable Small City in America”, and consistently ranks high for its family-friendly atmosphere, safety, affordability, and community events
- Known for its thriving economy, Fishers has a strong tech and startup scene as a hub for business and entertainment
- Fishers is one of the fastest-growing communities in Indiana
- The city is served by the Hamilton Southeastern School District, recognized for its high-performing schools
- Well-connected by major highways (I-69 and State Road 37) in the Indianapolis metro area

BRADLEY COMPANY

Beth Patterson, CCIM

Senior Vice President | Principal

T: 317.663.6558 C: 317.514.8454

bpatterson@bradleyco.com

Listed
By



© 2019 CBRE, Inc. All rights reserved. This information has been obtained from sources believed reliable, but has not been verified for accuracy or completeness. You should conduct a careful, independent investigation of the property and verify all information. Any reliance on this information is solely at your own risk. CBRE and the CBRE logo are service marks of CBRE, Inc. All other marks displayed on this document are the property of their respective owners. Photos herein are the property of their respective owners. Use of these images without the express written consent of the owner is prohibited.