

LAKEVIEW PLAZA

201 Littleton Rd
Morris Plains, NJ 07950

Office For Lease

2,500 - 13,179 SF



Leasing Information:
973.599.0050

Rick Genthe
973.599.0050
Rgenthe@lpc.com

Robert Lee
973.599.0050
rlee@lpc.com

Sean O'Brien
973.599.0050
sobrien@lpc.com

Lincoln

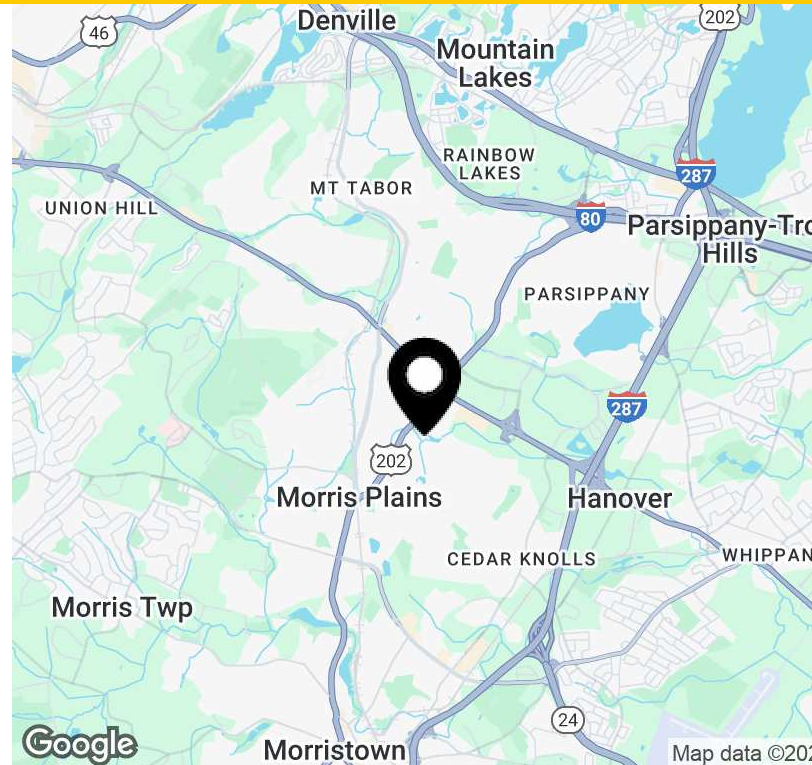
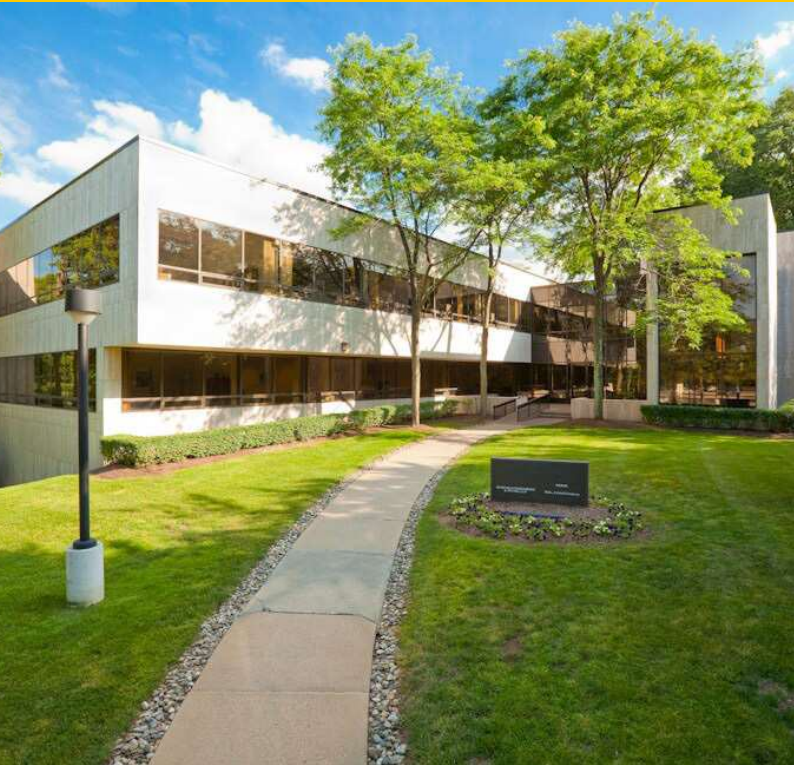
Lincoln Property Company
9 Entin Road Suite 103
Parsippany, NJ 07054

www.lpc.com

LAKEVIEW PLAZA

Office for Lease

201 Littleton Rd | Morris Plains, NJ 07950



Property Highlights

- Convenient location near Rt. 10, Rt. 202, Rt. 46, I-287, Rt. 24 and I-80
- Common area renovations recently completed
- Building sits on 16.5 acres of park-like grounds adjacent to a large natural lake
- Each floor has continuous exterior terraces with views of the lake
- Abundant window lineage
- +9' finished ceilings
- Flexible floor plans
- Above market parking ratio of over 4.4 spaces per 1,000 sf
- Abundance of amenities nearby via Rt. 10 with a variety of retail stores, restaurants and hotels
- Restrooms with showers
- On-site building engineer
- Shared tenant vending lounge
- HVAC connected to in-house computer monitoring system

Property Overview

201 Littleton Road is a 88,910 square foot, three story, Class B office building with recently renovated lobbies and common areas located on 16.5+/- acres in a beautifully landscaped park like setting accentuated with pond views. It's located in the heart of Morris County's corporate headquarters rich office market neighboring such Fortune 500 companies like Wyndham, Novartis, Tiffany & Co. and ADP.

Availabilities	SF	Date Available
Suite 120	2,774 SF	Immediately
Suite 215	4,537 SF	Immediately
Suite 230	2,500-13,179 SF	Immediately

Rick Genthe

973.599.0050
Rgenthe@lpc.com

Robert Lee

973.599.0050
rlee@lpc.com

Sean O'Brien

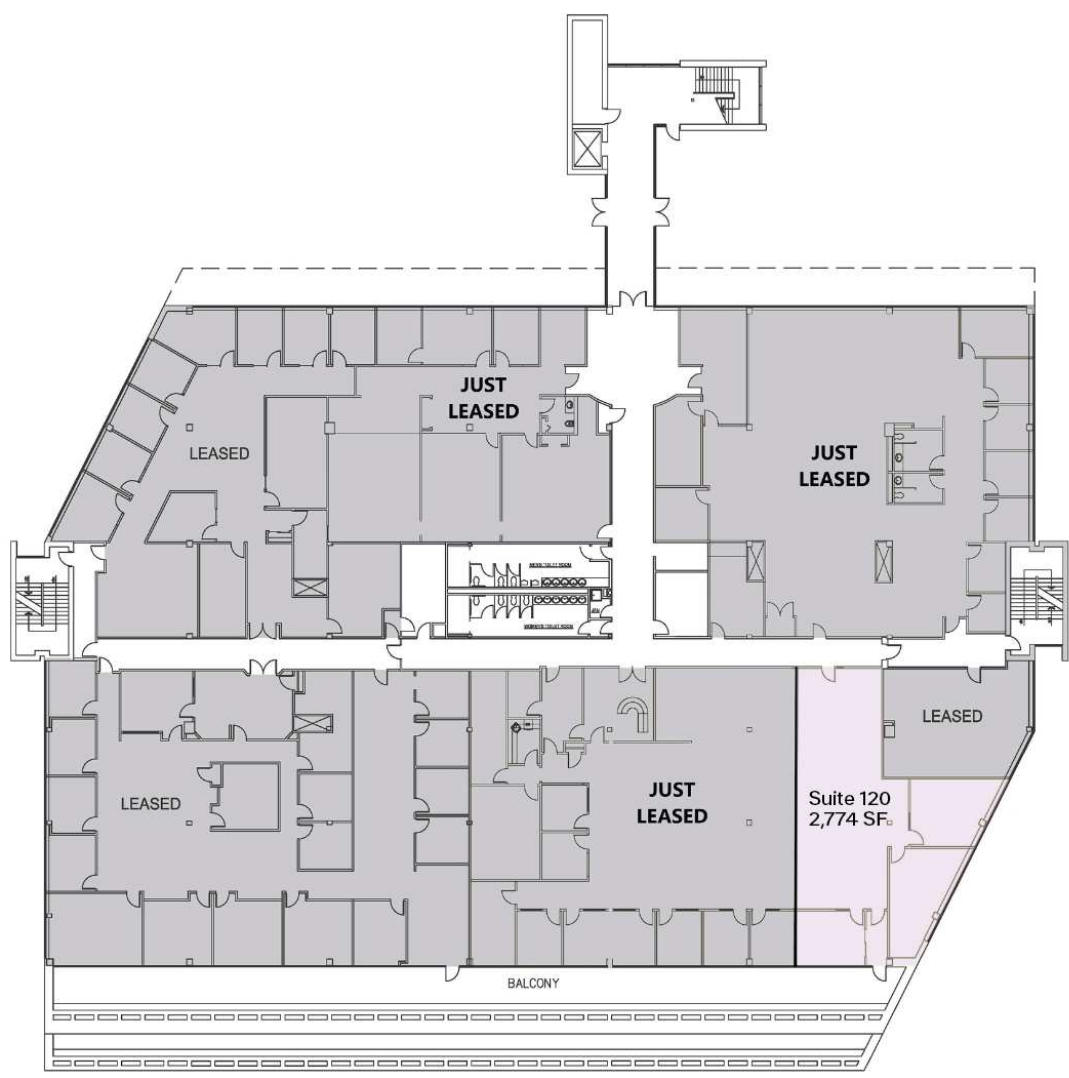
973.599.0050
sobrien@lpc.com

Lincoln

LAKEVIEW PLAZA

Floor 1

201 Littleton Rd | Morris Plains, NJ 07950



Suite	Size	Lease Rate	Description
<div></div> Suite 120	2,774 SF	\$21.75 TE	-

Rick Genthe
973.599.0050
Rgenthe@lpc.com

Robert Lee
973.599.0050
rlee@lpc.com

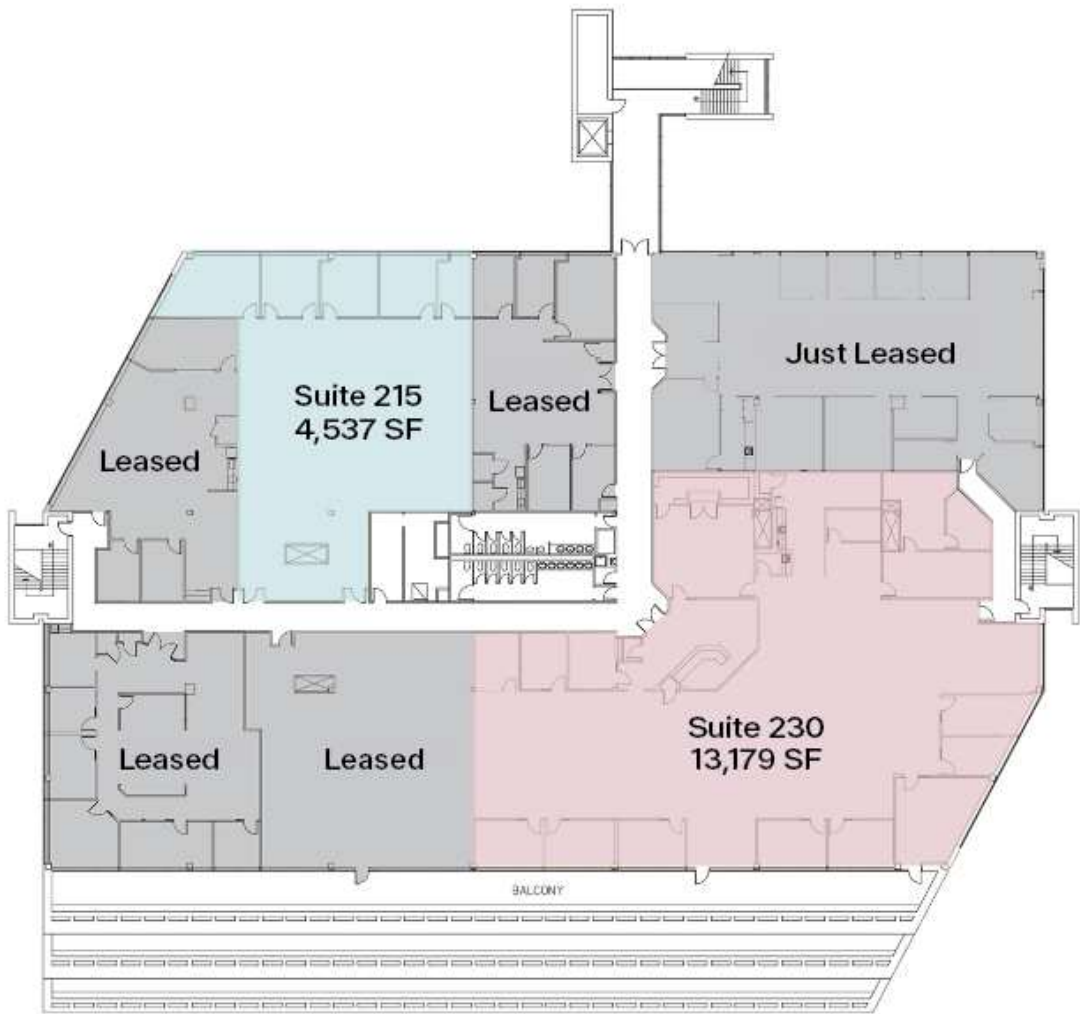
Sean O'Brien
973.599.0050
sobrien@lpc.com



Lincoln

LAKEVIEW PLAZA

Floor 2

201 Littleton Rd | Morris Plains, NJ 07950



Suite	Size	Lease Rate	Description
 Suite 215	4,537 SF	\$21.75 TE	Raw
 Suite 230	2,500-13,179 SF	\$21.75 TE	-

Rick Genthe
973.599.0050
Rgenthe@lpc.com

Robert Lee
973.599.0050
rlee@lpc.com

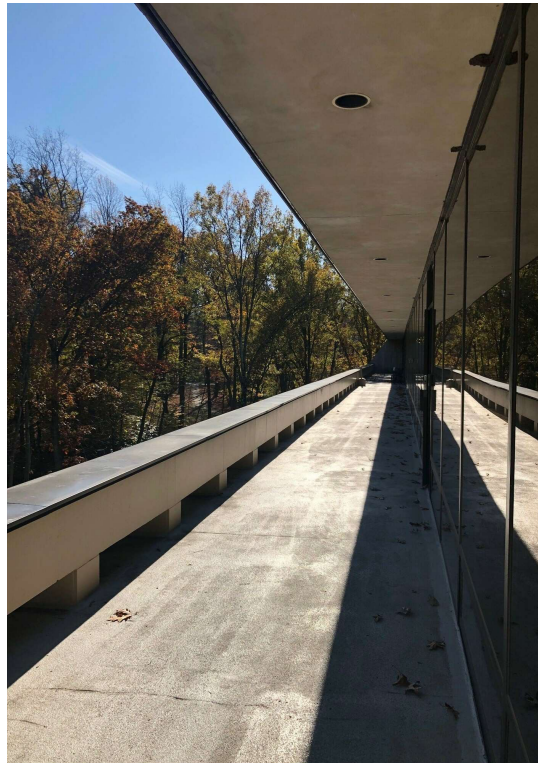
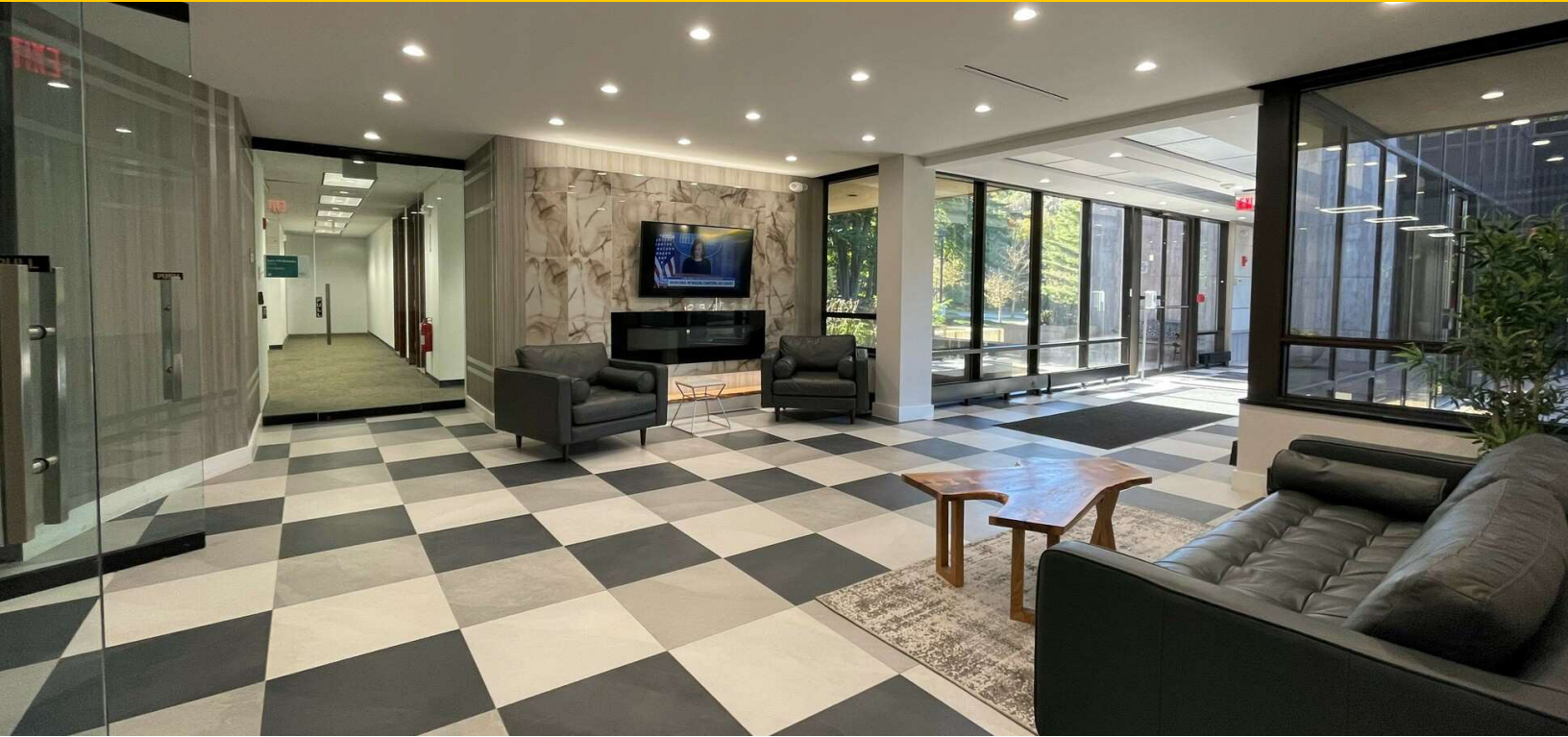
Sean O'Brien
973.599.0050
sobrien@lpc.com

Lincoln

LAKEVIEW PLAZA

Additional Photos

201 Littleton Rd | Morris Plains, NJ 07950



Rick Genthe
973.599.0050
Rgenthe@lpc.com

Robert Lee
973.599.0050
rlee@lpc.com

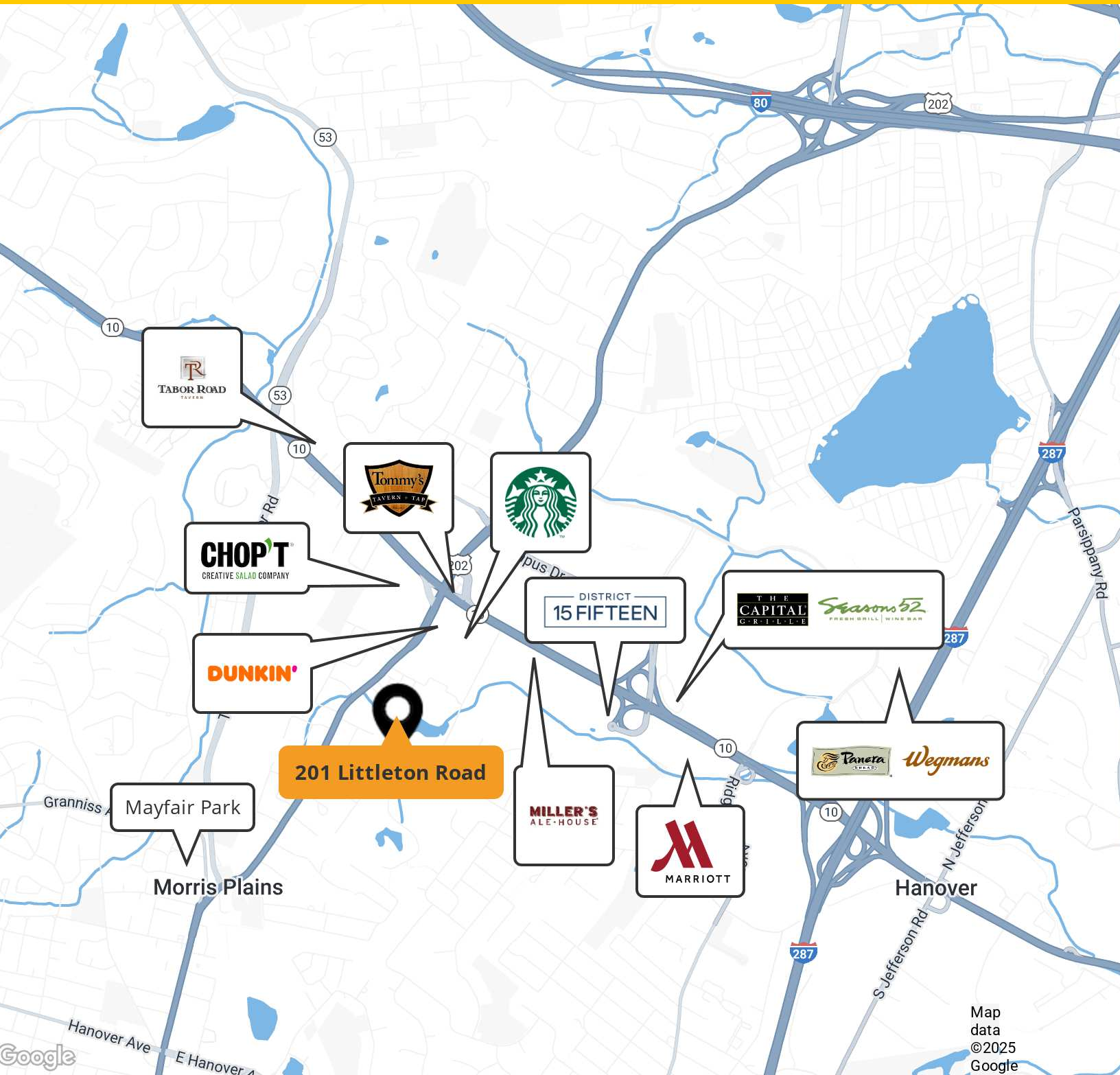
Sean O'Brien
973.599.0050
sobrien@lpc.com

Lincoln

LAKEVIEW PLAZA

Location Map

201 Littleton Rd | Morris Plains, NJ 07950



Rick Genthe

973.599.0050
Rgenthe@lpc.com

Robert Lee

973.599.0050
rlee@lpc.com

Sean O'Brien

973.599.0050
sobrien@lpc.com

Lincoln