

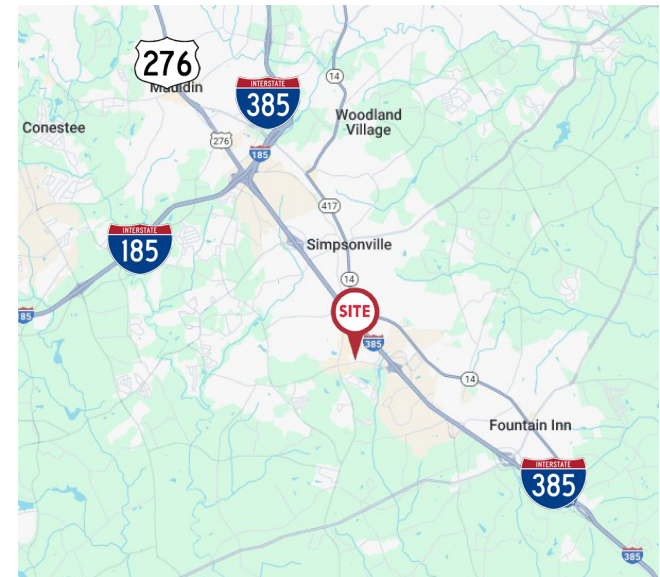
FOR LEASE
±1,525 SF FLEX SPACE
222 LaDean Ct. Simpsonville, SC

NAI Earle Furman



UNIT D AVAILABLE NOW

- ±1,525 SF with: ± 925 SF Warehouse and ± 600 SF Office
- 9'x10' Grade-level Door
- Parking Ratio: 3.01/1,000 SF
- Masonry construction
- Zoned S-1, City of Simpsonville
- Located off Fairview Road, just 0.65 miles from I-385
- Lease Rate: \$15.00 / SF / NNN



The information contained herein is deemed reliable but is not guaranteed. NAI Earle Furman makes no warranties or representations regarding the accuracy, completeness, or reliability of the information. All parties are encouraged to independently verify all details, including but not limited to property condition, terms, and financial projections. Prices, terms, and availability are subject to change without notice.

Hunter Garrett, CCIM, SIOR
864-505-6813
hgarrett@naief.com

John Staunton, SIOR
864-905-1112
johnstaunton@naiefurman.com

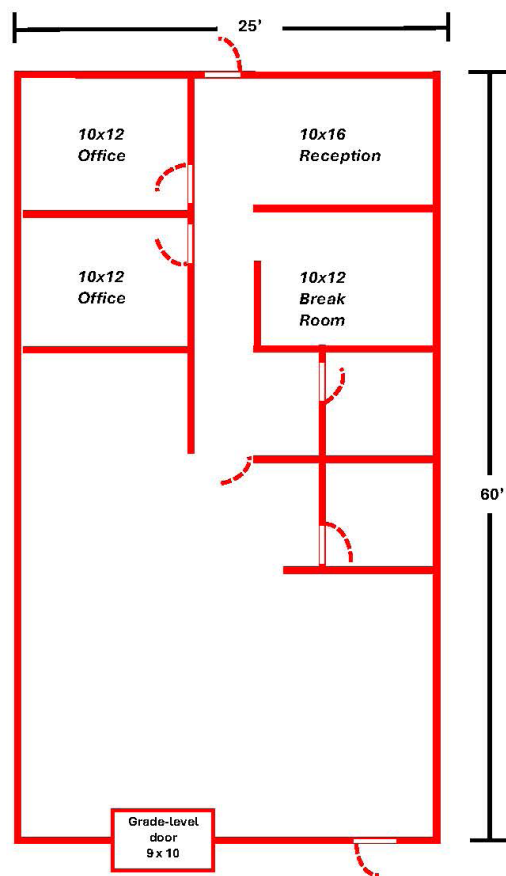
Josh Kenyon
704-964-2181
jkenyon@naief.com

NAI Earle Furman

FOR LEASE

±1,525 SF FLEX SPACE
222 LaDean Ct. Simpsonville, SC

Floorplan *Unit D*



For illustration purposes only, not to scale



The information contained herein is deemed reliable but is not guaranteed. NAI Earle Furman makes no warranties or representations regarding the accuracy, completeness, or reliability of the information. All parties are encouraged to independently verify all details, including but not limited to property condition, terms, and financial projections. Prices, terms, and availability are subject to change without notice.

Hunter Garrett, CCIM, SIOR
864-505-6813
hgarrett@naief.com

John Staunton, SIOR
864-905-1112
johnstaunton@naief.com

Josh Kenyon
704-964-2181
jkenyon@naief.com

NAI Earle Furman