

# Garden State Pavilions

2232 Route 70 W, Cherry Hill, NJ



**39,610 SF Retail Space for Sublease**

381,824 SF GLA regional power center

**David Townes**

Managing Director

+1 917 993 5515

david.townes@jll.com

**Alana Friedman**

Vice President

+1 201 741 0990

alana.friedman@jll.com



## Property **Location**

- » High traffic, dominant power center serving Northern Camden County
- » Excellent visibility and easy access from Route 70 W (Marlton Pike W) and S Cornell Avenue

## Retail Availability

- » 381,824 SF GLA regional power center
- » Availability:  
39,610 SF for sublease (Gabe's space)
- » Sublease expires 03/31/2029
- » Parking ratio: 7.84 / 1,000 SF
- » Pylon signage opportunity on Route 70 W

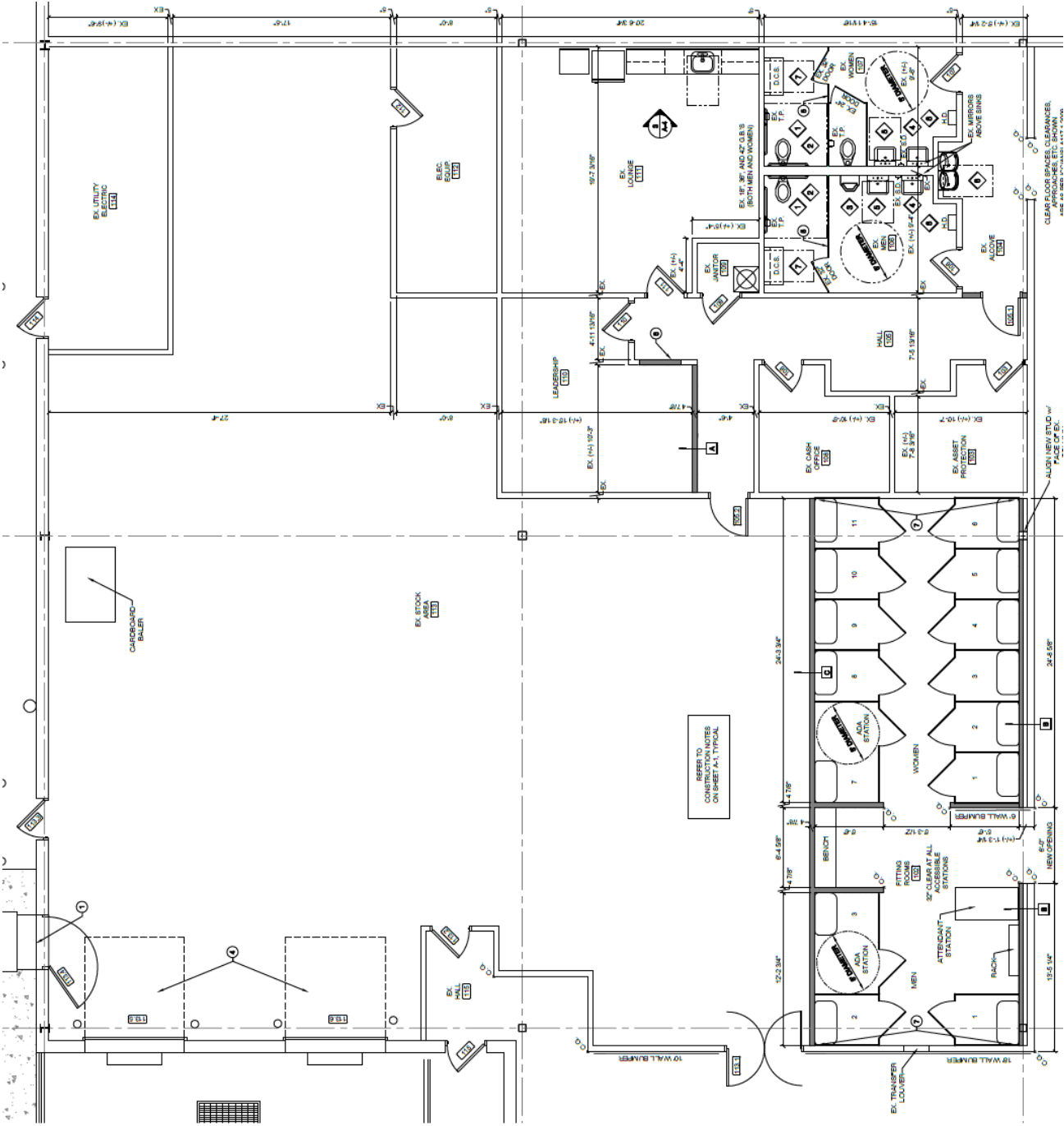
## Asking rent

- » Upon request
- » NNN charges: \$9.08 PSF

## Trade Area Co-Tenants



# Floor Plan



# | Site Plan

**39,610 SF for Sublease**



# Market Aerial



## Demographics



**148,668**  
Population



**\$79,413**  
Med. HH Income



**75,567**  
Employees



**7,809**  
Businesses

Demographics taken within 3 miles Source: ESRI, 2023

### For more information contact:

**David Townes**  
Managing Director  
+1 917 993 5515  
david.townes@jll.com

**Alana Friedman**  
Vice President  
+1 201 741 0990  
alana.friedman@jll.com