

# FACILITY TYPES

Facility classifications for mobility and control of access planning through 2050

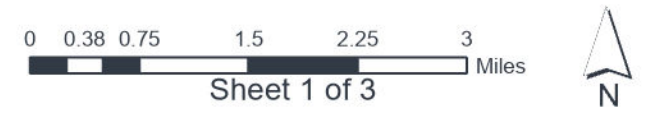


## CITY OF CONCORD

### Comprehensive Transportation Plan

Facility Types and Control of Access  
( Listed in Order of Mobility Function )

	Existing	Projected	New Location
Freeway			
Expressway (Multilane Divided)			
Boulevard (Multilane Divided)			
Major Thoroughfare (Multilane Undivided)			
Major Thoroughfare (2 Lane)			
Minor Thoroughfare			
Major Collector			



**COMPREHENSIVE TRANSPORTATION PLAN FOR THE CITY OF CONCORD AND PORTIONS OF THE CABARRUS-ROWAN METROPOLITAN PLANNING ORGANIZATION (CRMPO).**  
 Official Transportation Plan Map approved pursuant to the NC GENERAL STATUTE 136-66.2 and The City of Concord Code of Ordinances. This the \_\_\_ Day of \_\_\_\_\_, 2024.

Location: City of Concord, Cabarrus County, North Carolina  
 Townships 1, 2, 3, 4, 5, 11, 12  
 Prepared by: City of Concord Transportation Department  
 OFFICIAL TRANSPORTATION PLAN MAP

This the \_\_\_ Day of \_\_\_\_\_, 2024.

Director of Transportation Department  
 CITY OF CONCORD  
 NORTH CAROLINA  
**DRAFT**

ATTEST: \_\_\_\_\_  
 Kim J. Deason, City Clerk      William C. Dusch, Mayor

This map is an exception to the definition of a subdivision of land.  
 Transportation Director \_\_\_\_\_ Date \_\_\_\_\_

City of Concord - Planning and Neighborhood Development Department  
 This map is an exception to the definition of a subdivision, and is in compliance with all application provision of the Concord Development Ordinance.

Director \_\_\_\_\_ Date \_\_\_\_\_

State of North Carolina  
 County of Cabarrus  
 I, \_\_\_\_\_ Review Officer of Cabarrus County, certify that the map or plat to which this certification is affixed meets all statutory requirements for recording.

Review Officer \_\_\_\_\_  
 Date \_\_\_\_\_