

FOR LEASE

19,800 SF INDUSTRIAL FLEX BUILDING

6551 CORPORATE PARK CIRCLE, FORT MYERS, FL 33966



Click to View
Property Video



- **AVAILABLE:** 3,600 SF with 2,100 SF Outdoor Storage Yard
- **LEASE RATE:** \$18.00 / SF NNN
- **CAM:** \$3.00 / SF

PROPERTY FEATURES

- Available Immediately!
- 3,600 SF of Flex Space with 2,100 SF Outdoor Storage Yard
- 18' Clear Height
- Two (2) 14' in Front & Two (2) 10' in Rear Grade-Level Doors Per Unit
- Located in Plantation Corporate Park, Which is a Controlled Industrial Park
- Zoned IL (*click [here](#) for uses*)



Please Contact:

Colton Brausen
Vice President

239.210.7608

cbrausen@lee-associates.com



All information furnished regarding property for sale, rental or financing is from sources deemed reliable, but no warranty or representation is made to the accuracy thereof and same is subject to errors, omissions, change of price, or other conditions prior to sale, lease or financing or withdrawal without notice. No liability of any kind is to be imposed on the broker herein.

YOUR LOCAL MARKET **EXPERT**

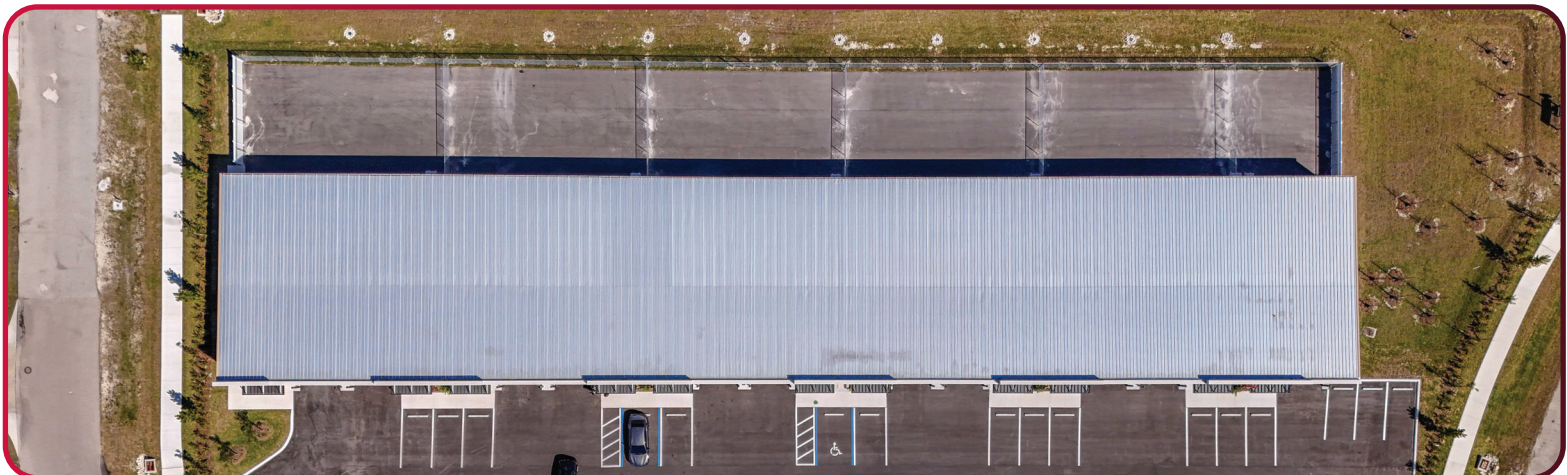
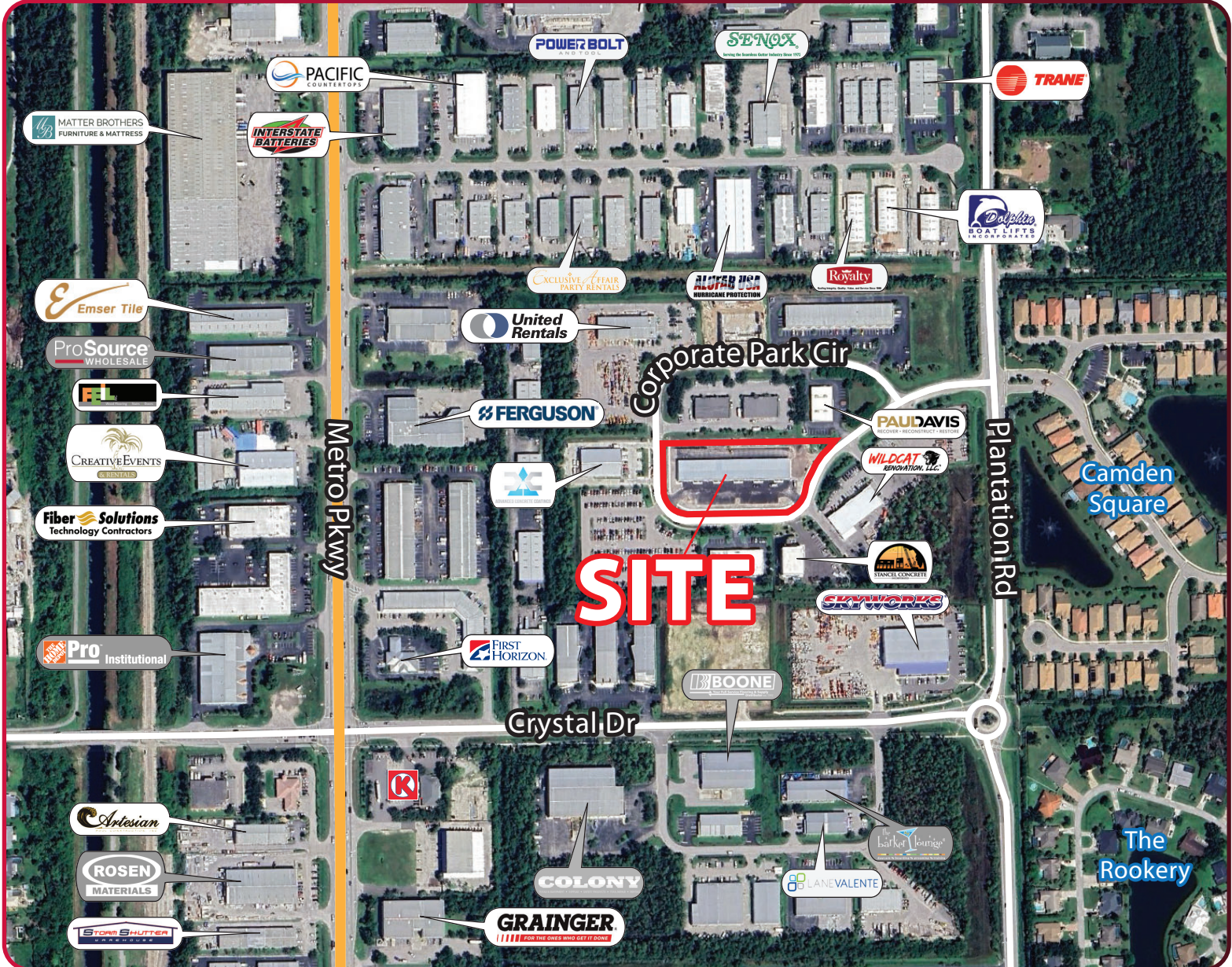
9979 Gulf Logistics Drive, Suite 210 | Fort Myers, Florida 33913 | Lee-FL.com

FOR LEASE

19,800 SF INDUSTRIAL FLEX BUILDING

6551 CORPORATE PARK CIRCLE, FORT MYERS, FL 33966

LEE & ASSOCIATES
COMMERCIAL REAL ESTATE SERVICES

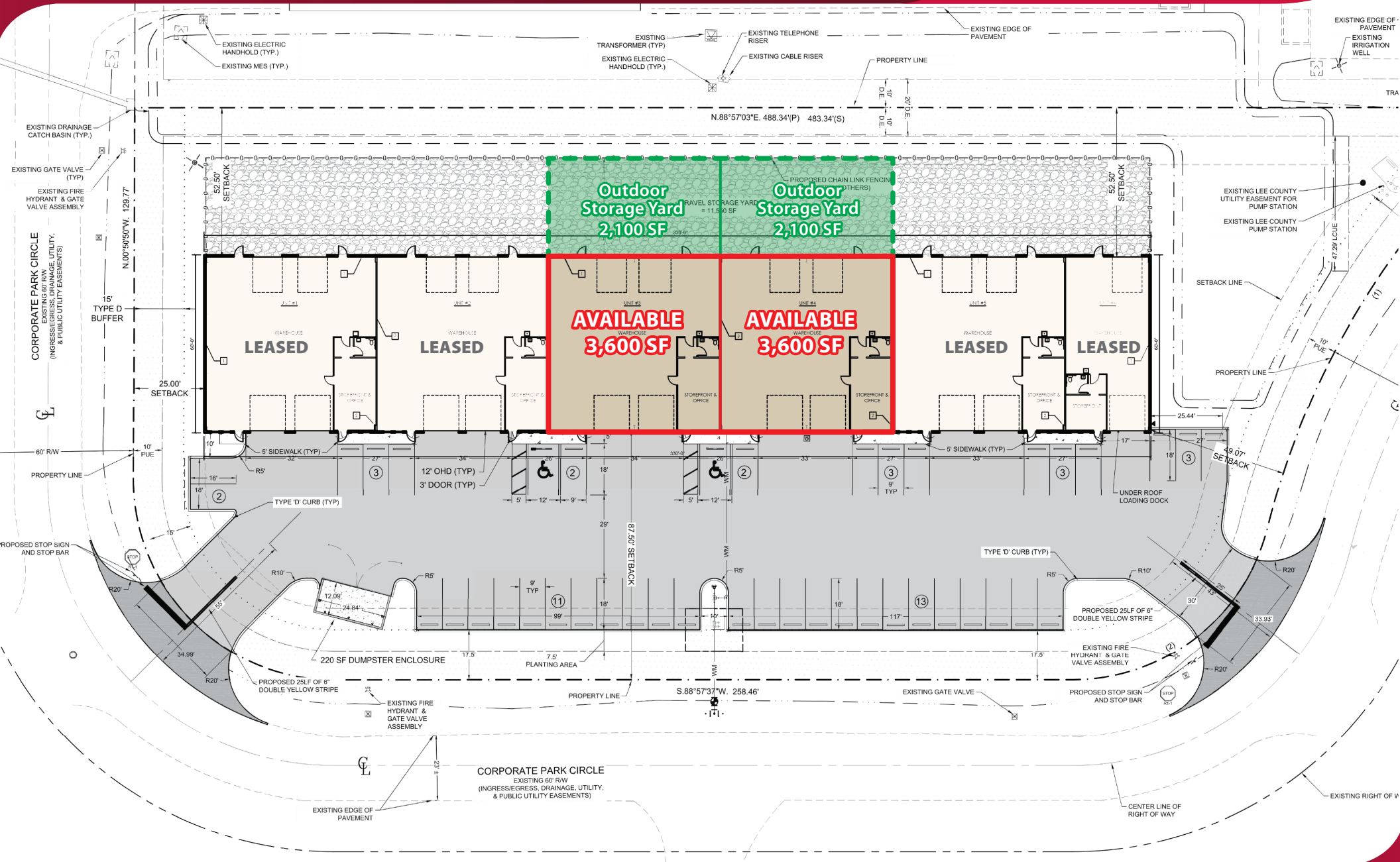


YOUR LOCAL MARKET **EXPERT**
9979 Gulf Logistics Drive, Suite 210 | Fort Myers, Florida 33913 | Lee-FL.com

X @ in f

19,800 SF INDUSTRIAL FLEX BUILDING

6551 CORPORATE PARK CIRCLE, FORT MYERS, FL 33966



YOUR LOCAL MARKET **EXPERT**

9979 Gulf Logistics Drive, Suite 210 | Fort Myers, Florida 33913 | Lee-FL.com



FOR LEASE

19,800 SF INDUSTRIAL FLEX BUILDING

6551 CORPORATE PARK CIRCLE, FORT MYERS, FL 33966

LEE & ASSOCIATES
COMMERCIAL REAL ESTATE SERVICES



YOUR LOCAL MARKET **EXPERT**
9979 Gulf Logistics Drive, Suite 210 | Fort Myers, Florida 33913 | Lee-FL.com

X @ in f

FOR LEASE

19,800 SF INDUSTRIAL FLEX BUILDING

6551 CORPORATE PARK CIRCLE, FORT MYERS, FL 33966

LEE & ASSOCIATES
COMMERCIAL REAL ESTATE SERVICES



YOUR LOCAL MARKET **EXPERT**
9979 Gulf Logistics Drive, Suite 210 | Fort Myers, Florida 33913 | Lee-FL.com

X @ in f