

1 Ethel Road, Suite 102D, Edison, NJ 2,300 SF Office/Medical Space For Lease



Asking Rent: Call For Pricing

- Modern Single-Story Professional Building
- Attractive Office Park Setting
- Plenty of Parking | Well Landscaped
- Individual Tenant-Controlled HVAC & Private Restroom
- Private Entrances to Each Suite with 24-Hour Access
- Direct Entrance from the Parking Lot
- On-Site Tutor Time Day Care Center
- Overnight Carrier Drop Boxes & Bank Immediately Nearby
- Directly Off of I-287 / Near New Jersey Turnpike
- Minutes to Route 440, I-9 & 35 & Garden State Parkway

Exclusive Broker
Contact:

Chandler Vanderbeek, Vice President 732.991.9008 | chandlererv@bussel.com

Chandler Vanderbeek, Vice President 732.991.9650 | connorv@bussel.com

Bussel Realty Corp. | Licensed Real Estate Broker | 2 Ethel Road, Suite 202A, Edison, NJ 08817 | 732.287.3777 | Bussel.com

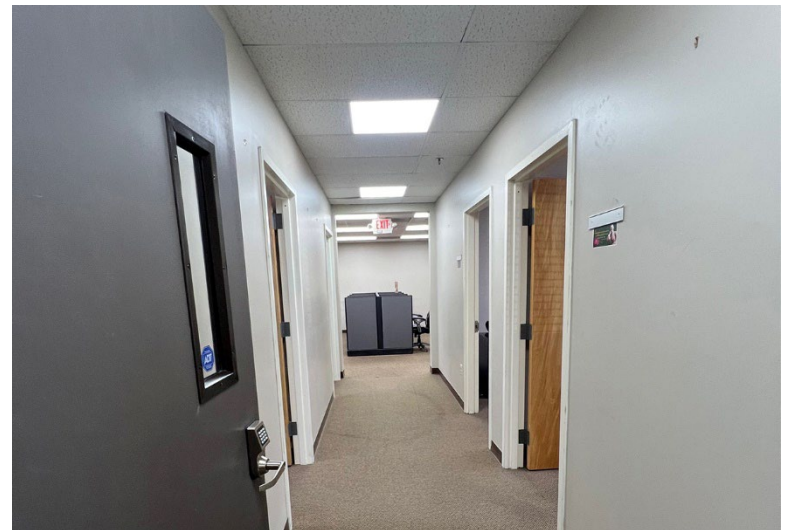
This information herein has been obtained from sources considered to be reliable, but no guarantee of the accuracy is made by the Company. Subject to error, omission or withdrawal without notice.

1 Ethel Road, Suite 102D, Edison, NJ

2,300 SF Office/Medical Space For Lease



Entrance & Interior



1 Ethel Road, Suite 102D, Edison, NJ 2,300 SF Office/Medical Space For Lease



Offices & Restroom



1 Ethel Road, Suite 102D, Edison, NJ

2,300 SF Office/Medical Space For Lease



Location Map

