

Lease Rate
\$13.00 psf gross

12 Highwood Avenue Southington, CT 06489

±14,710 sf industrial building
on ±1.18 acres for lease

12 Highwood Avenue a ±14,710 sf single-story industrial property on ±1.18 acres. There are spaces available ranging from 300 square feet to 14,710 square feet.

SUITE	RSF	RATE	AVAILABLE
1	Up to 6,000	\$13.00	Immediately
2	824	\$13.00	Immediately
4	817	\$13.00	60-Days
5	182	\$13.00	60-Days
9	1,735	\$13.00	60-Days
13	726	\$13.00	60-Days
15	405	\$13.00	60-Days

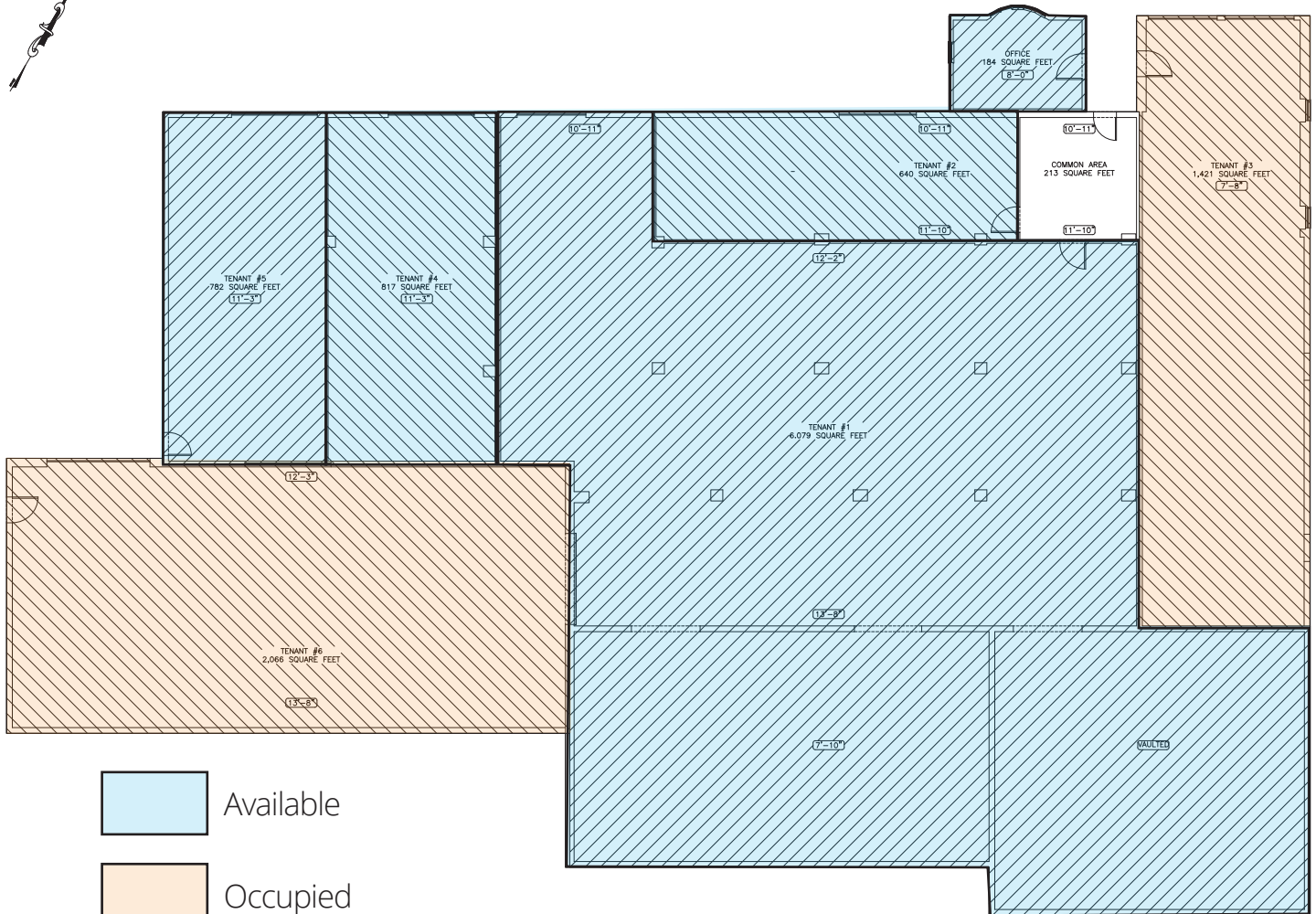
Christian Dietz
860 616 4028 direct
860 877 5880 cell
christian.dietz@colliers.com

864 Wethersfield Avenue
Hartford, CT 06114
860 249 6521 Main

colliers.com/hartford

Copyright © 2021 Colliers International. Information herein has been obtained from sources deemed reliable, however its accuracy cannot be guaranteed. The user is required to conduct their own due diligence and verification.

12 Highwood Avenue Floor Plan



12 HIGHWOOD AVENUE
12,210 TOTAL SQUARE FEET

1 EXISTING FLOOR PLAN
SK-1 SCALE: 3/16"=1'-0"



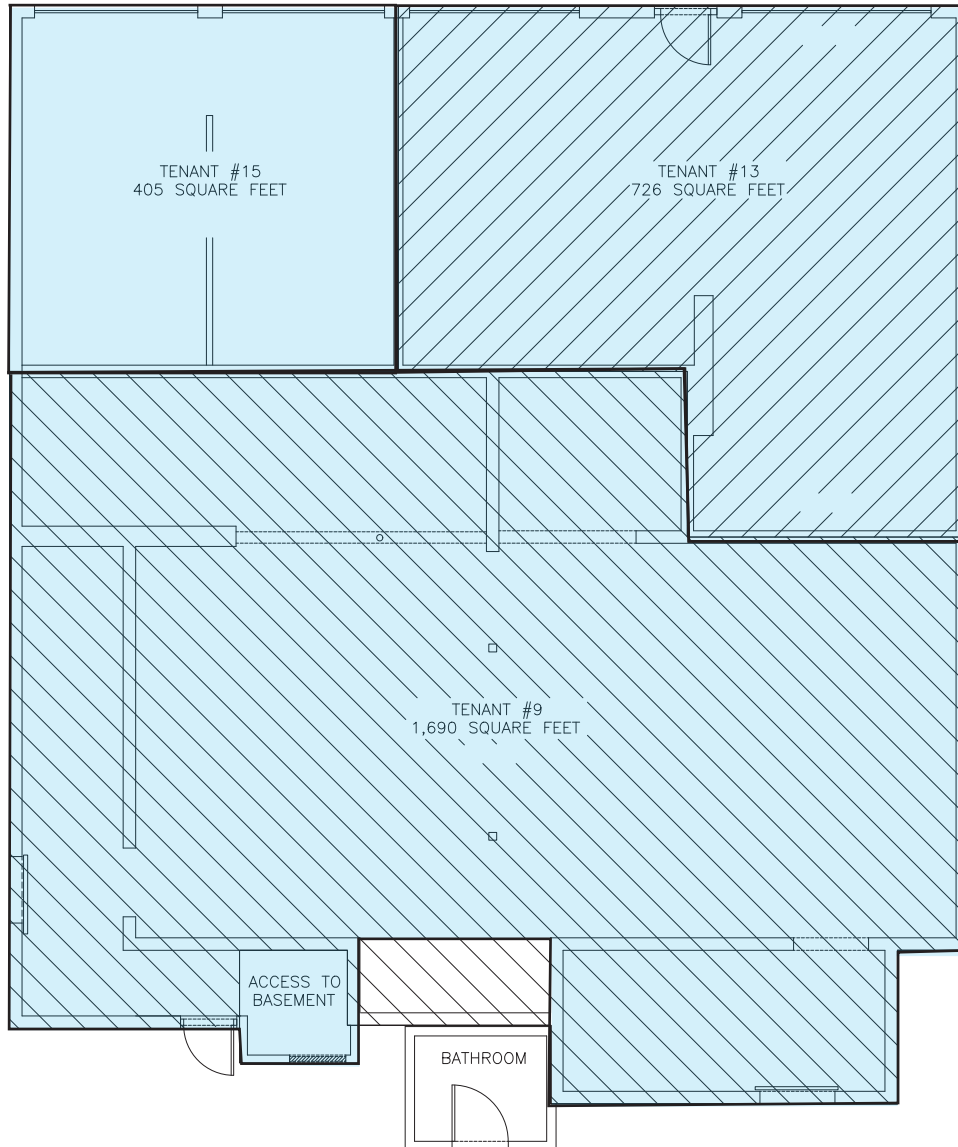
Contact:

Christian Dietz
 860 616 4028 direct
 860 877 5880 cell
christian.dietz@colliers.com

864 Wethersfield Avenue
 Hartford, CT 06114
 860 249 6521 Main

colliers.com/hartford

12 Highwood Avenue Floor Plan



2,823 TOTAL SQUARE FEET



Contact:

Christian Dietz
860 616 4028 direct
860 877 5880 cell
christian.dietz@colliers.com

864 Wethersfield Avenue
Hartford, CT 06114
860 249 6521 Main

colliers.com/hartford