



BETTER HOMES AND GARDENS REAL ESTATE
BLOOMTREE REALTY

600 E. Moeller St.
Prescott, AZ 86301

Presented By:

Matthew Fish, MBA

Associate Broker

480-309-1089

matt@prescottcommercialrealestate.com



600 E Moeller St
Prescott, AZ 86301

Property Description

Northwood Commerce Center is Prescott's newest industrial park. There are 14 commercial suites all of which have 3 Phase Power, Fire Sprinklers, and roll up doors. Access includes grade level, dock high, and truck wells. The property has been totally updated with new LED lighting, New Paint, New Electrical, New Asphalt, HVAC Units, and lots of parking. The zoning is Industrial Light and it is located less than half a mile from the courthouse square.

Zoning

IL - See City of Prescott's website www.prescott-az.gov for zoning regulations.

IL - The Industrial Light (IL) District is a moderate-intensity industrial district. The IL district provides specific standards for the development of a variety of light industrial and service uses. Typical IL district uses include: manufacturing, wholesaling, warehousing, distribution, research and development, and large-scale commercial services.

Property Overview

BLOOMTREE REALTY

PRICE

\$10 per sq. ft. per year plus \$1.68 NNN per sq. ft. annually.

LOCATION

600 E. Moeller St.
Prescott, AZ 86301

SITE

The property is located less than half a mile north of Prescott's courthouse square

LAND AREA

Property covers parcel #'s 114-01-035E, 114-01-038B, 114-01-038A, 114-01-085, and 114-01-035E at approximately 2.81 acres.

BUILDING AREA

2 buildings with 14 available units between 1,416 sq. ft. to 13,681 sq. ft.

BUILT

The building was constructed in 1998 and is currently being renovated.

POPULATION COUNT

In 2018, the Prescott population was 43,314 and the Prescott Valley population was 45,751.

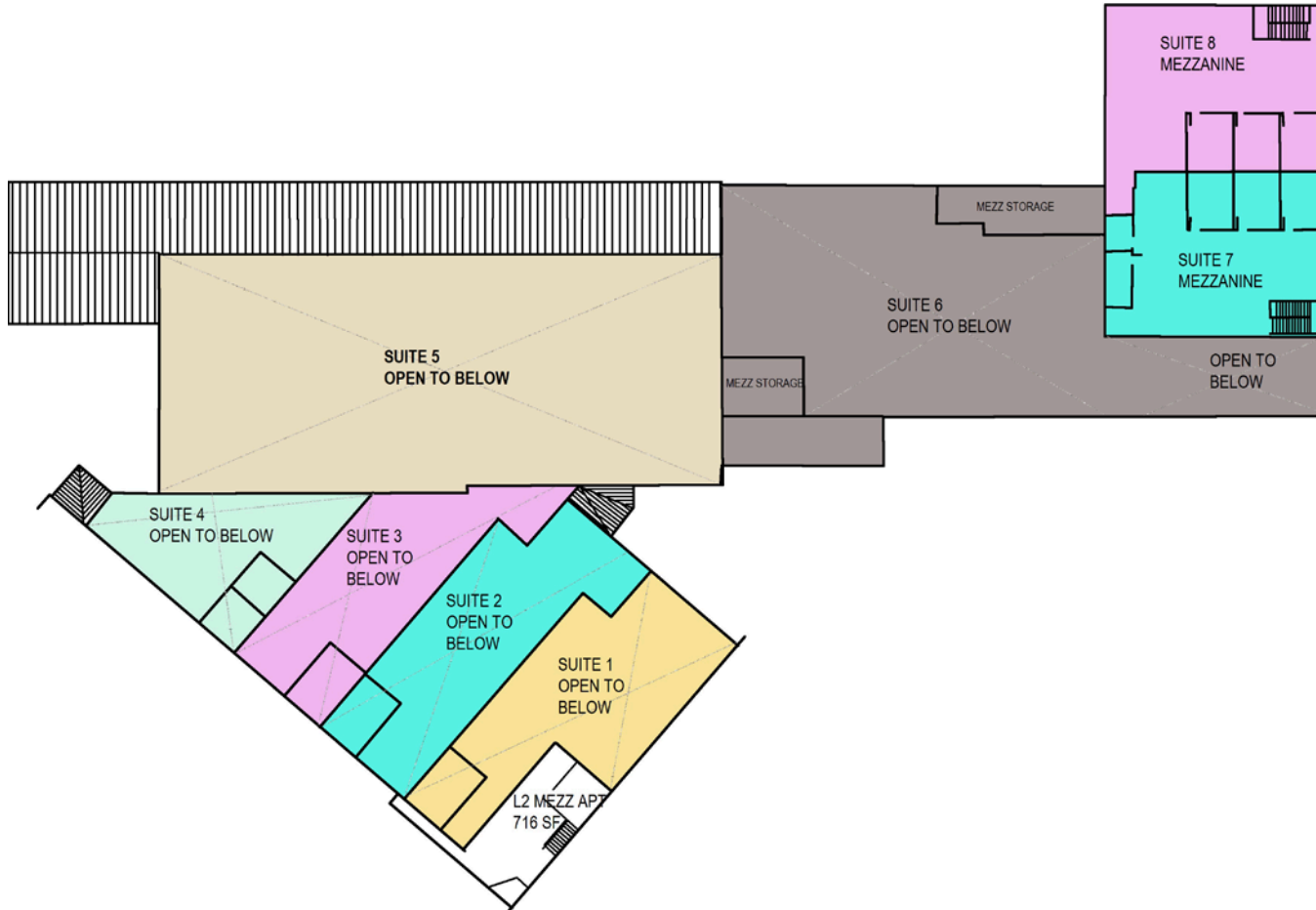
PARCEL MAP



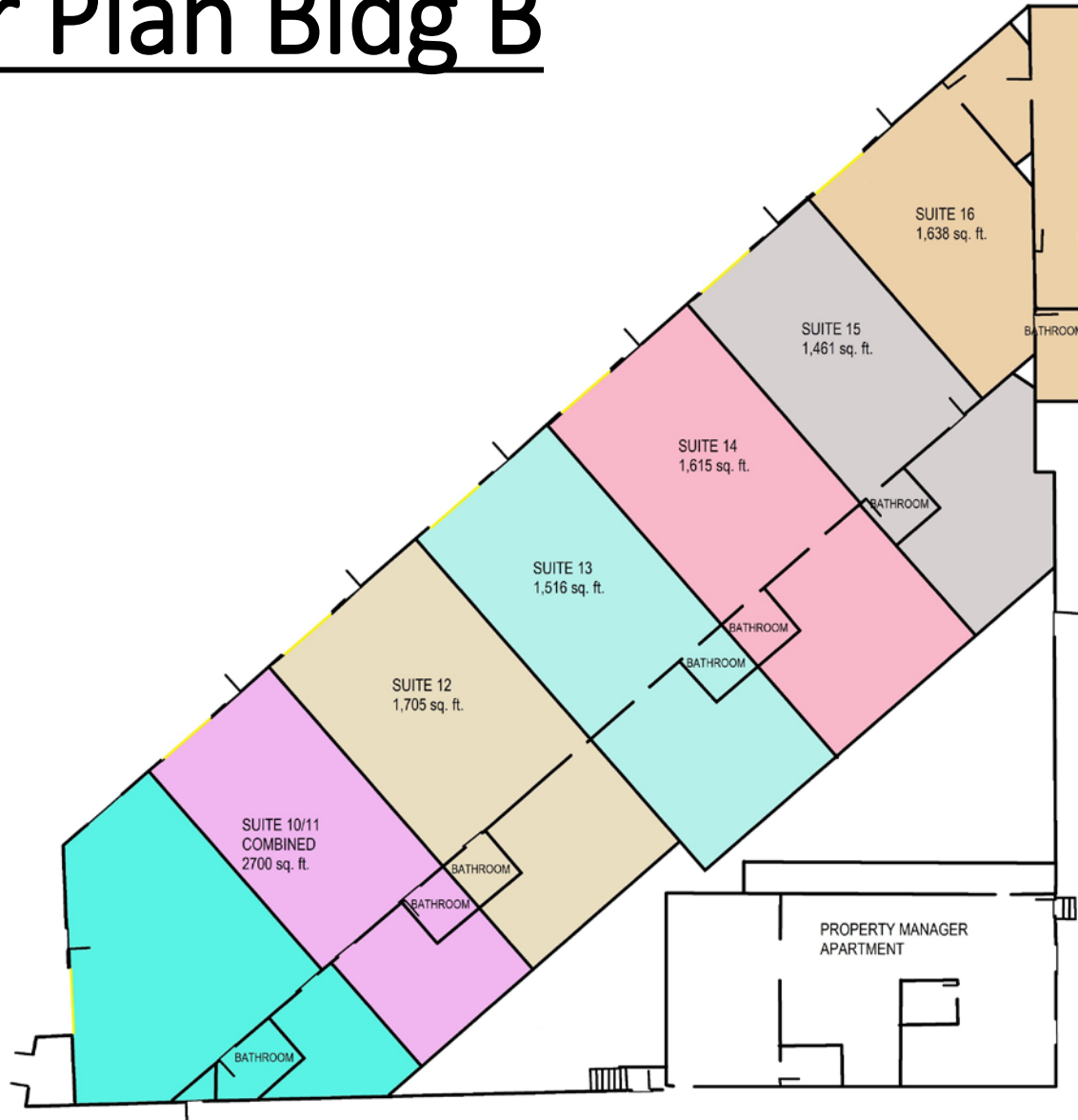
Floor Plan Bldg A 1st Floor



Floor Plan Bldg A 2nd Floor



Floor Plan Bldg B



Suites Overview

600 E Moeller Street, Prescott, AZ 86301 - Master Suite

600 E Moeller Street, Prescott, AZ 86301 - Master Suite										
Suite	Rentable - SF									
Bldg A	Deemed	Office	Storage Rooms	Roll-Up Door	Loading Dock	Available Amps	Volts	Ceiling Height	Vacant	NNN
1	2,854	215		16' x 20'	Grade Level with Roll up	300A	277/480 & 120/208V	17'3"	N	1.68
2	2,836	215		8' Wide 10' Tall	Grade Level with Roll up	300A	277/480 & 120/208V	17'3"	Y	1.68
3	2,432	215		8' Wide 10' Tall	Grade Level with Roll up	300A	277/480 & 120/208V	17'3"	Y	1.68
4	1,892	215		8' Wide 10' Tall	Grade Level with Roll up	300A	277/480 & 120/208V	17'3"	Y	1.68
5	13,681	1,204	1,637	3 - 8' x 10'	2 Truck wells and Grade level	1200A	277/480 & 120/208V	17'6"	Y	1.68
6	8,997	1,642		2 - 12' x 12'	Dock High and Grade Level	1200A	277/480 & 120/208V	16'7"	Y	1.68
7	5,276	2,510		8' Wide 10' Tall	Grade Level with Roll up	600A	277/480 & 120/208V	11'	Y	1.68
8	5,067	2,327		8' Wide 10' Tall	Dock High Dock	600A	277/480 & 120/208V	11'	Y	1.68
Bldg B	Deemed	Office	Storage Rooms	Roll-Up Door	Loading Dock	Available Amps	Volts	Ceiling Height	Vacant	NNN
10 & 11	2,700	248		8' Wide 8' Tall	Grade Level with Roll up	400A	120/240V	12'	Y	1.68
12	1,705	342		8' Wide 8' Tall	Grade Level with Roll up	200A	120/240V	12'	Y	1.68
13	1,516	297		8' Wide 8' Tall	Grade Level with Roll up	200A	120/240V	12'	Y	1.68
14	1,615	320		8' Wide 8' Tall	Grade Level with Roll up	200A	120/240V	12'	Y	1.68
15	1,461	316		8' Wide 8' Tall	Grade Level with Roll up	200A	120/240V	12'	Y	1.68
16	1,638	461		8' Wide 8' Tall	Grade Level with Roll up	200A	120/240V	12'	Y	1.68
Total	53,670									

