

PRIME REDEVELOPMENT/VALUE-ADD OPPORTUNITY

FEBRUARY 4TH AT 10AM CST
LIVE & ONLINE AUCTION

ON-SITE PREVIEW:
WED. JANUARY 28TH, 2026 AT 10AM

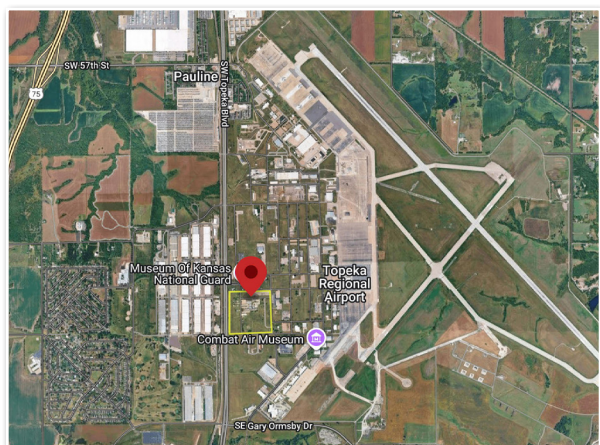
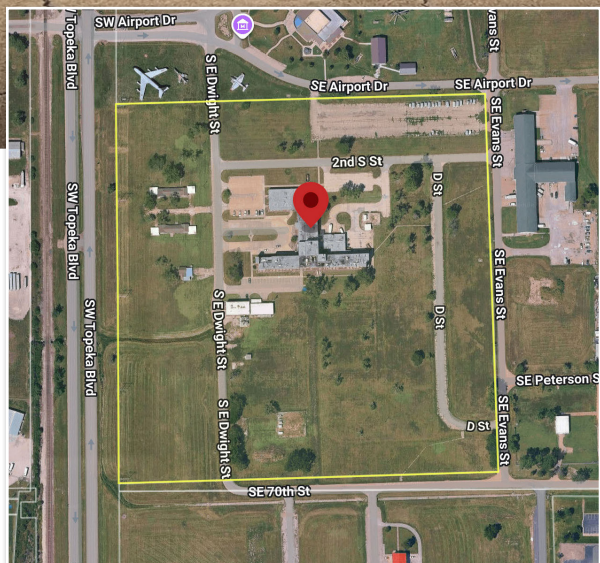
OPENING BID \$100,000



FORMER KDHE OFFICE & LABORATORY CAMPUS
6810 SE DWIGHT ST. TOPEKA, KS 66620

BID YOUR PRICE! LIVE & ONLINE AUCTION

An exceptional redevelopment opportunity within the Topeka Regional Airport & Business Center. Former Kansas Department of Health & Environment Office and Laboratory Campus featuring 136,082± net rentable square feet on 34.06± acres. All personal property—including office furniture, lab equipment, and fixtures—conveys with the real estate.



REDEVELOPMENT POTENTIAL

- Self-storage conversion
- Adaptive reuse
- Multi-tenant industrial/flex redevelopment
- Subdivision into smaller parcels
- Zoned I-1 Light Industrial (10,000 sq. ft. minimum lot size).

PROPERTY HIGHLIGHTS

- 136,082± sq. ft. under roof
- 34.06± acres
- Former KDHE office & lab campus
- Located in Topeka Regional Airport & Business Center
- I-1 Light Industrial zoning
- Ideal for conversion, reuse, or subdivision
- Selling to highest bidder, subject to government approval

REGISTER
TO BID
TODAY!



M.E. HIGGENBOTHAM, BROKER #BR00218701

10% Earnest Money Deposit of Total Purchase Price due day of sale, balance due at Closing within 30 days. 10% Buyer's Premium. If you intend to bid online, you must contact HAI at Info@AuctionTopeka.com no later than January 30th, 2026 at 5PM CST and express your interest to bid online. Sale Subject to Government Approval.

800-257-4161 | www.AuctionTopeka.com

For more info: Info@AuctionTopeka.com