

NAIklnb



WOODMERE

9881 BROKEN LAND PARKWAY | 9891 BROKEN LAND PARKWAY
COLUMBIA, MD 21046

OWNED BY:

ABRAMS
DEVELOPMENT GROUP



CLASS A BUILDINGS

CLEAN & MODERN

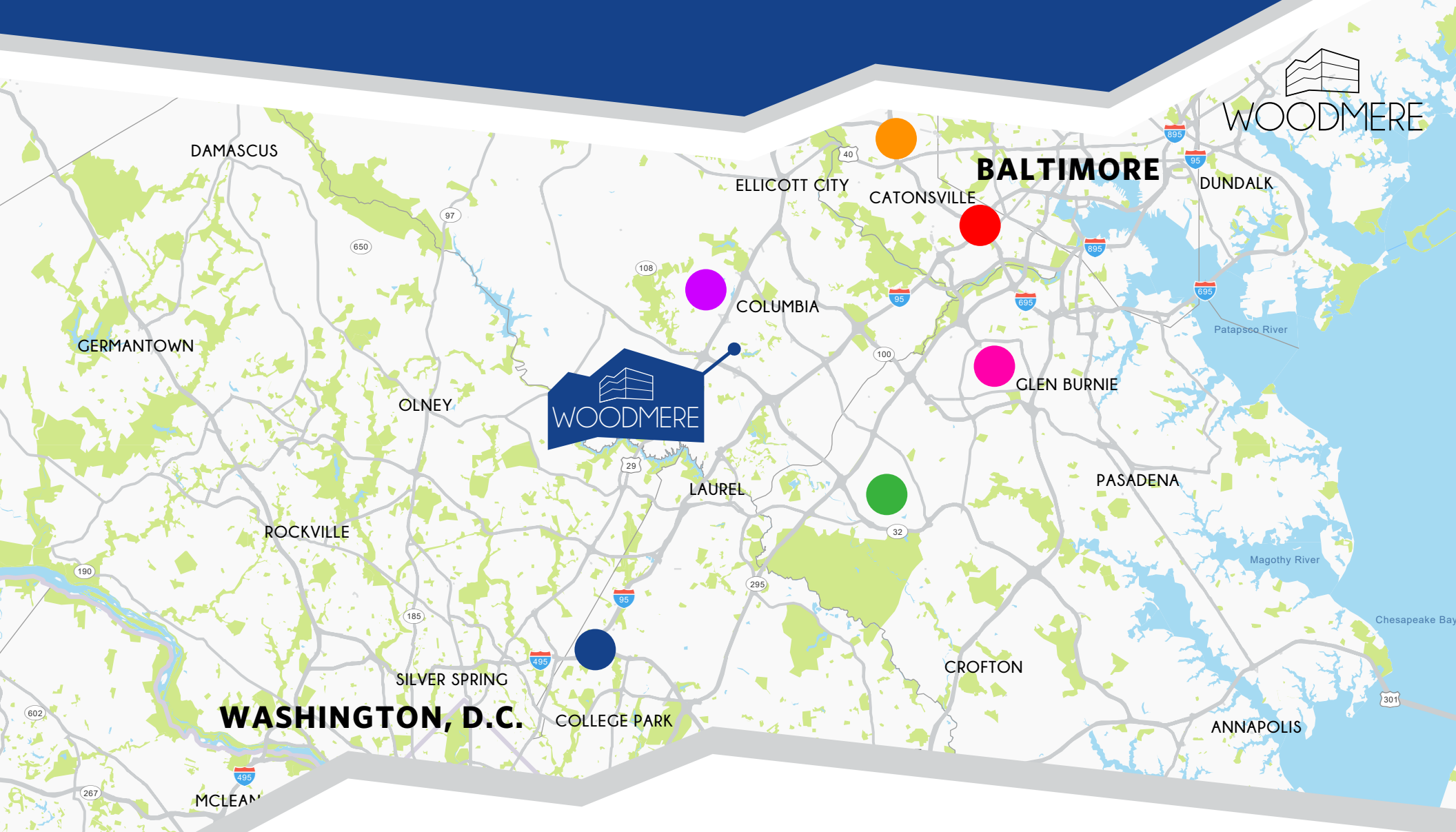
9881 BROKEN LAND PARKWAY

9891 BROKEN LAND PARKWAY







Woodmere is a premier Class A office park in a strategically located area. The buildings total 125,000 SF and are currently undergoing capital improvements to provide more value to its tenants. Woodmere is right off Route 32 with easy access to Downtown Columbia and I-95. Tenants can take advantage of modern and well-maintained office spaces with extensive window lines and an abundance of free parking.

HIGHLIGHTS

- ◇ 3-10 year lease terms available
- ◇ Move-in-ready suites with private offices
- ◇ On-site management
- ◇ 3.3/1,000 SF parking ratio
- ◇ On-site conference & fitness center
- ◇ Private balconies in select suites



DRIVETIMES

- | | | | | | |
|---|---|--------------------------------|---|-------------------------------|---|
| Social Security Administration / 15 minutes |  | NSA & Fort Meade / 17 minutes |  | BWI Airport / 21 minutes |  |
| Washington Beltway / 18 minutes |  | Baltimore Beltway / 14 minutes |  | Downtown Columbia / 7 minutes |  |



SUITE AVAILABILITIES

9881 BROKEN LAND PARKWAY

Suite 303 - 2,053 SF

9891 BROKEN LAND PARKWAY

Suite 101 - 2,347 SF

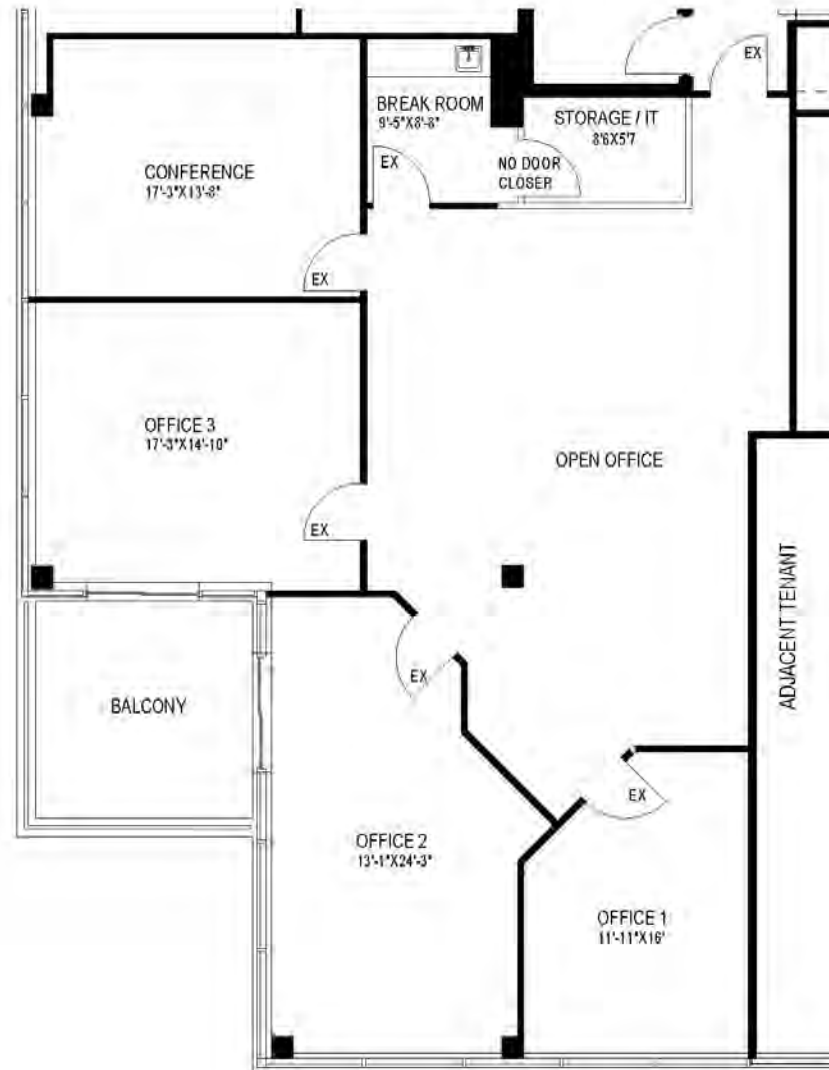
Suite 306 - 2,012 SF





9881 BROKENLAND PARKWAY

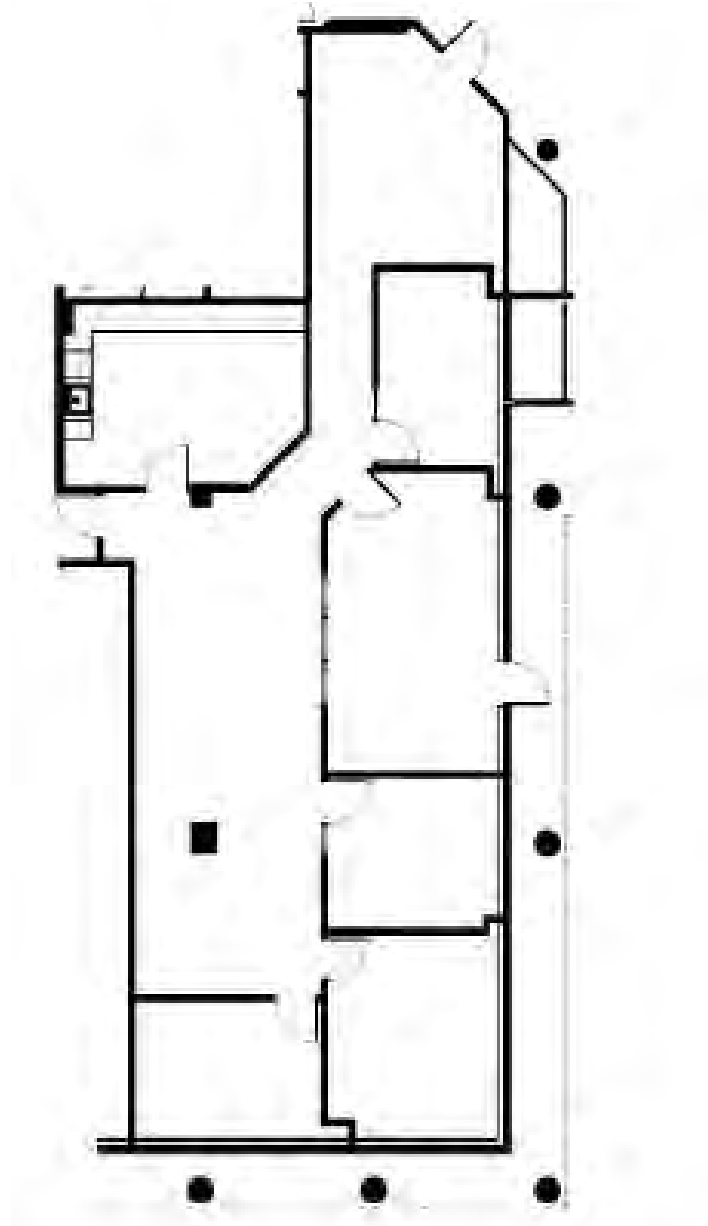
SUITE 303 - 2,053 SF





9891 BROKENLAND PARKWAY

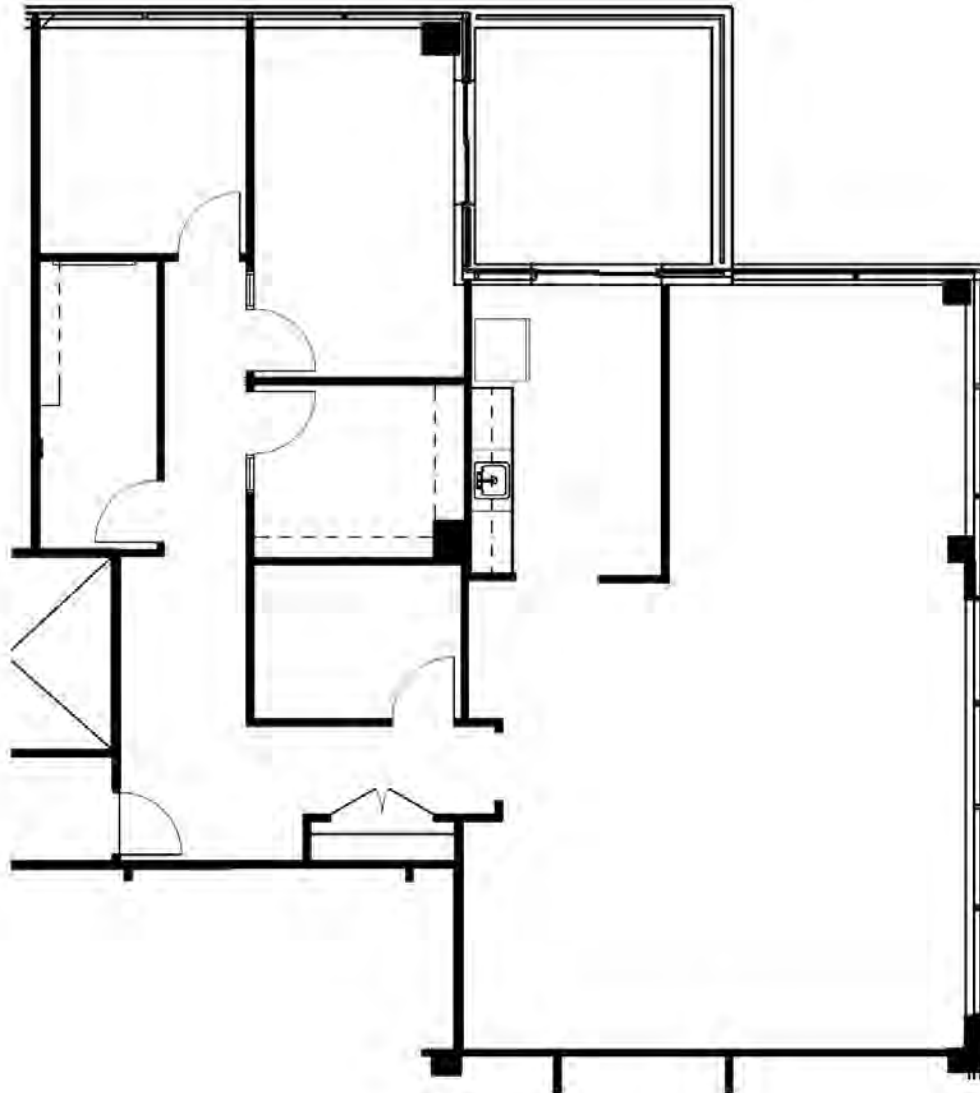
SUITE 101 - 2,347 SF





9891 BROKENLAND PARKWAY

SUITE 306 - 2,012 SF





AMENITIES

Woodmere is in the heart of Columbia MD and is considered the midpoint between Baltimore City and Washington D.C. Being just minutes from Downtown Columbia, Columbia Mall and the upcoming "Merriweather District", provides the area with a live/work/play atmosphere for years to come. Woodmere is also going to benefit from two upcoming retail developments focusing on food service that will be within walking distance.



CONFERENCE CENTER



GYM



CONFERENCE CENTER



GYM



LOBBY AREA



GYM



WOODMERE

YOUR CONTACTS

CHARLES A. BREITENOTHER

443-574-1422

cbreitenother@klnb.com

SPENCE DAW

443-574-1429

sdaw@klnb.com

AUSTIN EBER

443-574-1414

aeber@klnb.com

NAI klnb

9881 Broken Land Parkway, Suite 300
Columbia, MD 21046