

À LOUER | FOR LEASE ± 1 800 - 5 400 PI<sup>2</sup> | SQ. FT.



ESPACE COMMERCIAL | COMMERCIAL SPACE

**342 RUE SHEBROOKE E.**

**MONTREAL, QC**

## Faits Saillants | Highlights

**Superficie disponible (pi<sup>2</sup>)**  
Available Area (sq. ft.) **± 1 800 - 5 400**

**Loyer demandé (pi<sup>2</sup>)**  
Asking rent (sq. ft.) **\$44**

**Disponibilité**  
Availability **IMMEDIATE**

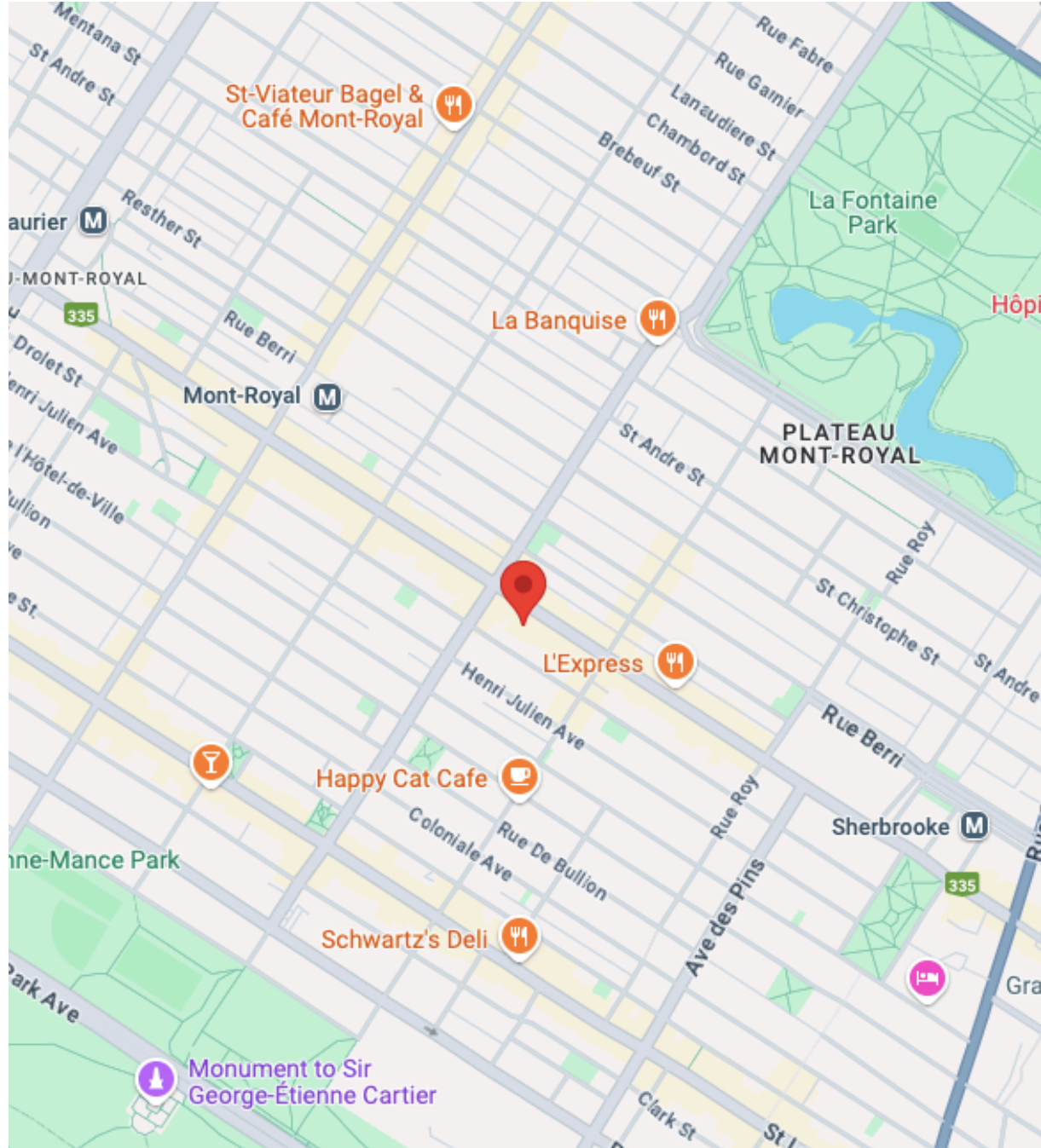
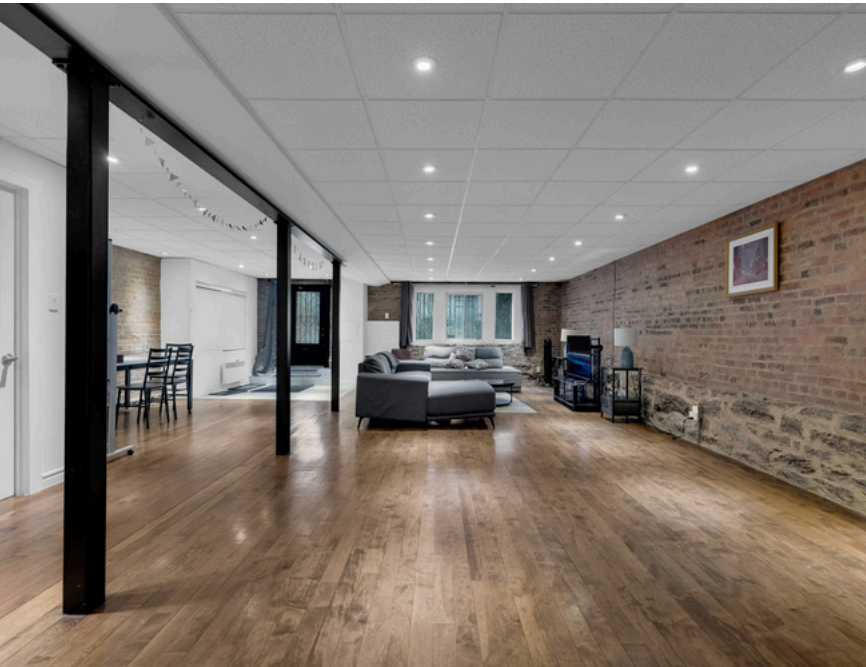
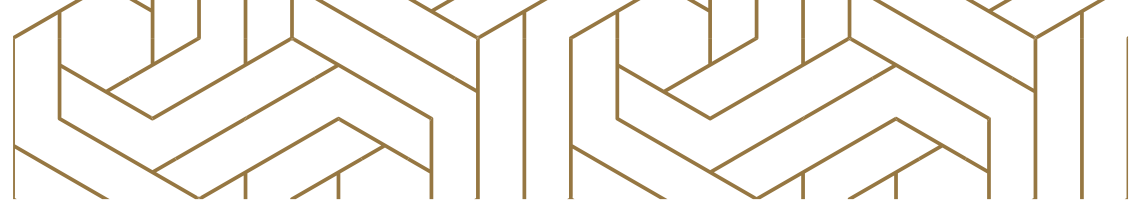
**À proximité**  
Close to **Metro Sherbrooke, Berri-Uqam  
Square St-Louis  
Parc Lafontaine**



**342 RUE SHEBROOKE E.**  
**MONTREAL, QC**

# 342 RUE SHEBROOKE E.

MONTREAL, QC





Communiquez avec nous:  
Contact us:

**Kevin Chaim**

Courtier Immobilier Commercial et Résidentiel  
Commercial and Residential Real Estate Broker

438-838-7251  
emiliecalderson@kw.com

**Samuel Benizri**

Courtier Immobilier Commercial et Résidentiel  
Commercial and Residential Real Estate Broker

514-629-9366  
samuelbenizri@kw.com