

5,700SF FOR LEASE

(3EA) 14'x14' DID'S – DRIVE THRU BAY TO REAR YARD SPACE

16726 W CHERRY CREEK COURT JOLIET, ILLINOIS 60433



Cherry Creek Business Park -5,700sf. \$13.50sf modified gross or \$6,412.50 a month.
(3ea) 14'x14' overhead doors w/openers, one drive thru bay that leads to rear yard space (76' x 42'), 18' Ceilings, warehouse (76'x66')has in-floor heat within concrete shop floors, Separate 20'x66' bay that wall could be removed, LED Lighting, 200 Amp 3-phase electric, 700+/-sf Offices.
(2ea) private offices, reception area, breakroom, two handicap restrooms, mezzanine storage above office & 2nd story private office, concrete drive & parking. I-1 Zoning Unincorporated Will County

FOR ADDITIONAL INFORMATION CONTACT:

MARK E. KOENIG

(815) 546-1679 CELLULAR

MARK@MARKEKOENIG.COM

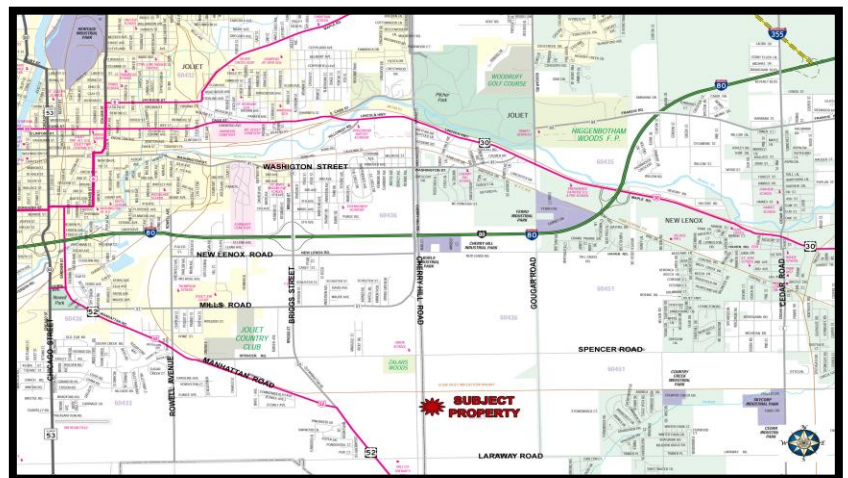
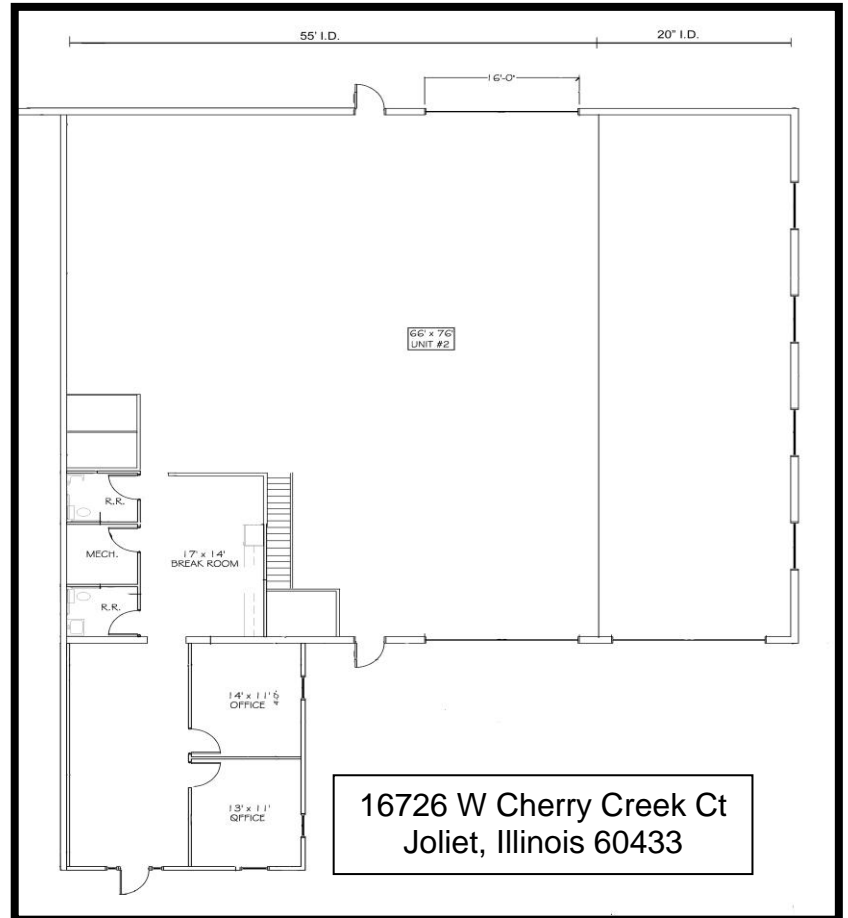
WWW.THEKOENIGGROUPRES.COM



No warranty or representation, expressed or implied, is made as to the accuracy of the information contained herein, and is submitted subject to errors, omissions, change of price, rental or other conditions.

5,700SF FOR LEASE

(3EA) 14'x14' DID'S – DRIVE THRU BAY TO REAR YARD SPACE



FOR ADDITIONAL INFORMATION CONTACT:

MARK E. KOENIG

(815) 546-1679 CELLULAR

MARK@MARKEKOENIG.COM

WWW.THEKOENIGGROUPRES.COM

