

# FOR LEASE

**23,650 SF Industrial Building**  
**Large Fenced Yard**  
**Heavy Power**



14729 Spring Avenue, Santa Fe Springs, California

CalBRE #01774875

**Contact Us** | **Visit Us Online**  
562.692.2200 | [interpresrealty.com](http://interpresrealty.com)







*interPres commercial Realty is pleased to present an excellent opportunity to lease a 23,650 SF freestanding industrial building in the sought after area of Santa Fe Springs. The subject property is an excellent manufacturing/assembly facility featuring heavy 480 volt power, 20' minimum warehouse clearance, oversized ground level loading doors, ample parking, superior corporate office space and a very large paved and fenced yard. It is very well located with immediate access to the I-5, 105, 91 and 605 freeways.*

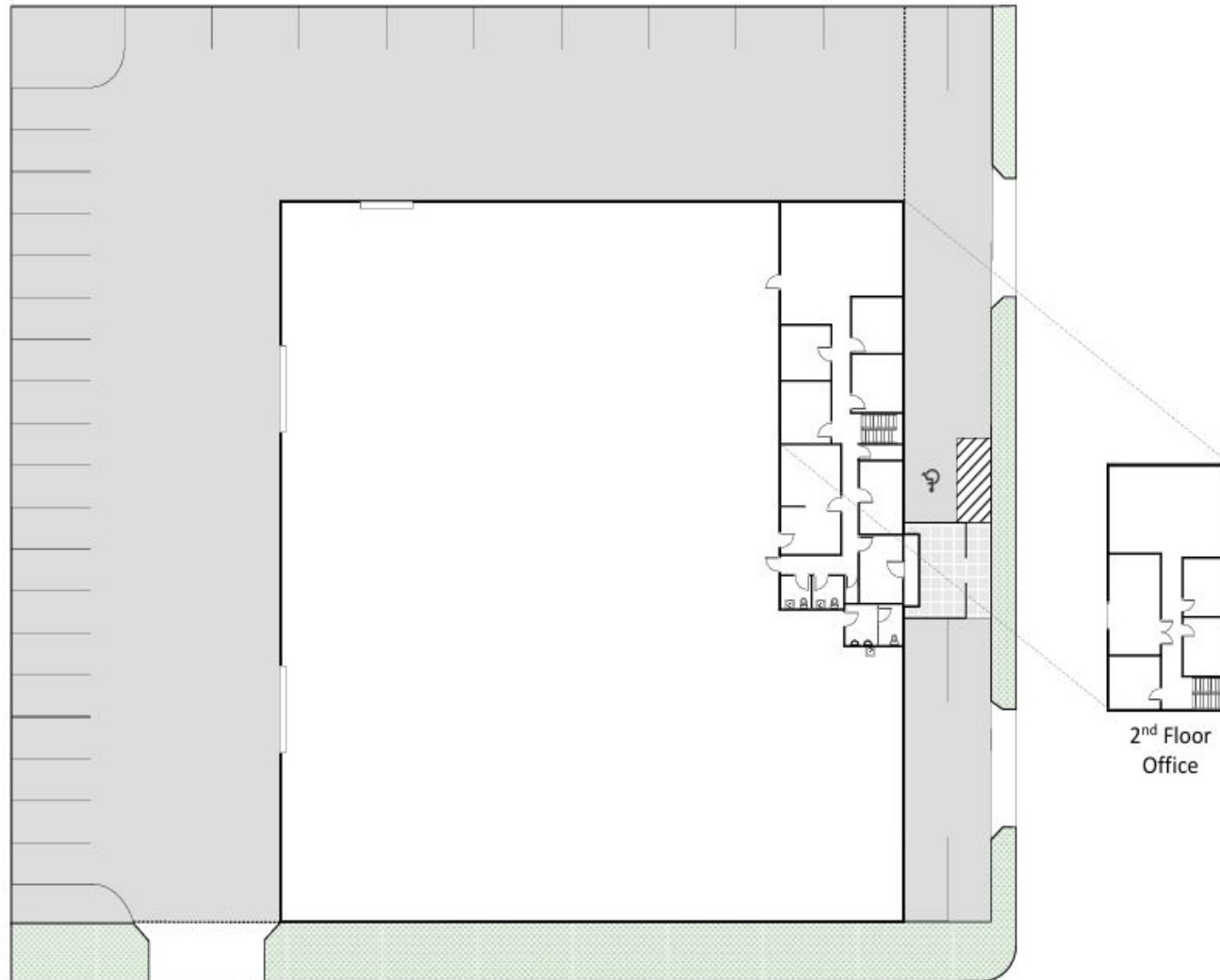
<b>Property Type</b>	<b>Mfg/Assembly/Whse</b>
<b>Building Size</b>	<b>23,650 SF</b>
<b>Office</b>	<b>3,819 SF</b>
<b>Lot Size</b>	<b>0.95 AC</b>
<b>Warehouse Height</b>	<b>20' Min</b>
<b>Power</b>	<b>1200A-480V</b>
<b>Ground Level Doors</b>	<b>3</b>
<b>Yard</b>	<b>Paved &amp; Fenced</b>
<b>Construction Type</b>	<b>CTU</b>
<b>Year Built</b>	<b>1970</b>
<b>Zoning</b>	<b>M-2</b>







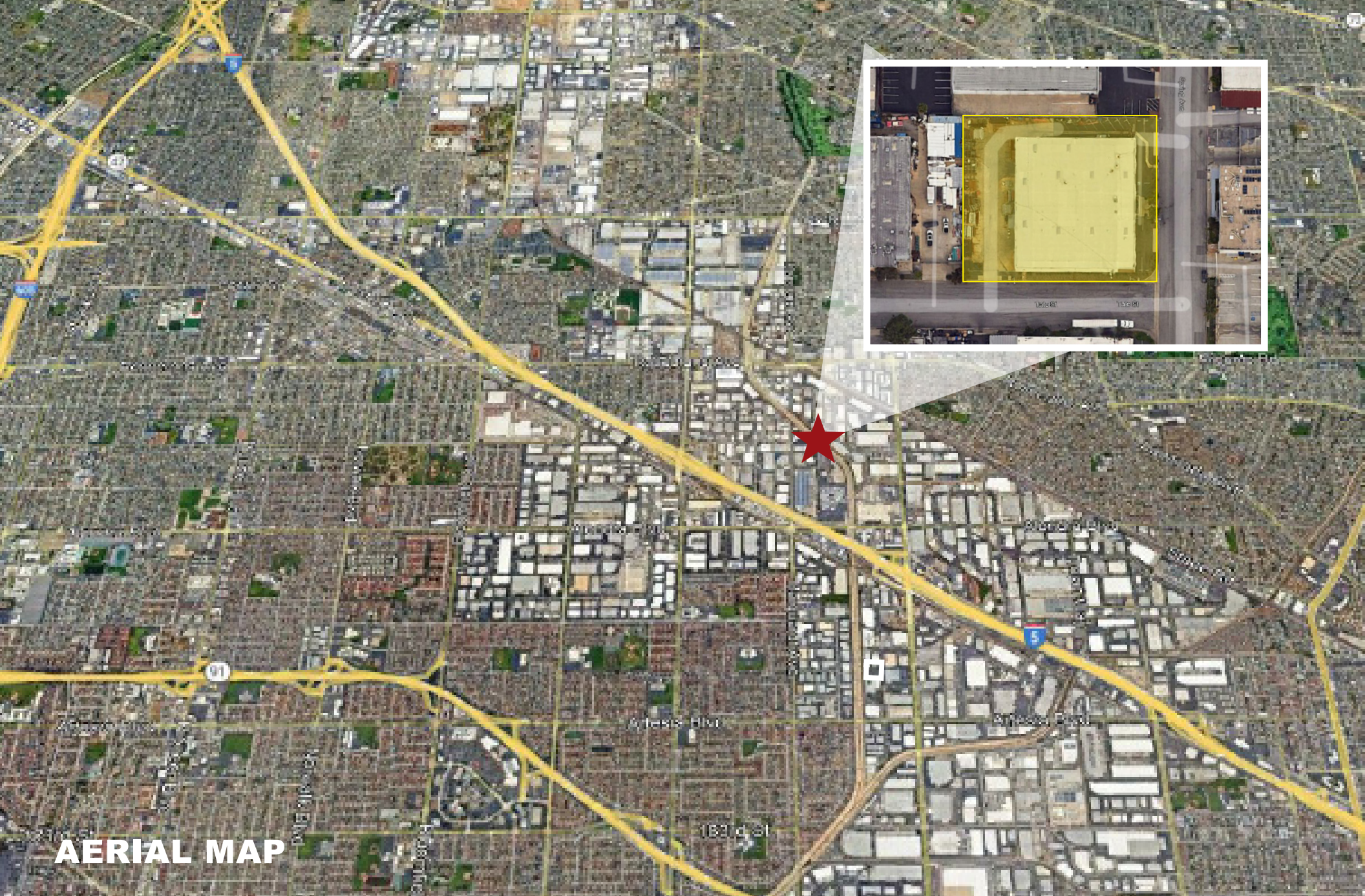
# SITE PLAN



Rendering not to scale







AERIAL MAP





For more information, or to schedule  
a tour, please contact us.



**Peter Pistone**  
President  
**213.418.9200 Direct**  
[peterp@interpresrealty.com](mailto:peterp@interpresrealty.com)  
BRE Lic. #01007013

**Sandy Gonzalez**  
Associate Vice President  
**562.469.5331 Direct**  
[sandyg@interpresrealty.com](mailto:sandyg@interpresrealty.com)  
BRE Lic. #02097966



The information contained herein has been obtained from sources we deem reliable. While we have no reason to doubt it's accuracy, we do not guarantee it or make any representations about it. interPres Commercial Realty suggests you perform a careful, independent investigation of the property to determine the suitability of the property for your needs. All measurements and specifications are approximate.

CalBRE #01774875

**Contact Us**  
**562.692.2200** | **Visit Us Online**  
**[interpresrealty.com](http://interpresrealty.com)**

CalBRE #01774875

