

RETAIL SPACE

Approx 4,560 sf (with bonus lower level)
For Lease

27 Waltham St
Lexington, MA



AVAILABLE (APPROX SF):

4,560 sf - First Floor Space
4,560+ sf - Bonus Lower Level Space (free rent)

USES:

Retail Use

OFFERED FOR LEASE:

\$30/sf + NNN (approx \$10/sf)

NEARBY TENANTS: Fiorella's, Webster Bank, USPS, Peet's Coffee, CVS, Marathon Sports, StretchMed, Rancatore's Ice Cream & Yogurt, and much more!

The information contained herein has been obtained through sources deemed reliable by JMJ Commercial Realty, Inc., but cannot be guaranteed for its accuracy. We recommend to the tenant that any information, which is of special interest, should be obtained through independent verification.

LOCATION:

27 Waltham St is located near the intersection of Mass Ave in the heart of Lexington Center.

SUMMARY:

Excellent location and value. Former restaurant space available for retail use. Approx 4,560 sf on first level with similar sized free rent on lower level. Features large open space ideal for a variety of businesses. Walking distance to a large number of local shops and restaurants with ample parking available. Bring your business and creativity to vibrant Lexington Center! Call for more info!

S
P
A
C
E

F
O
R

L
E
A
S
E

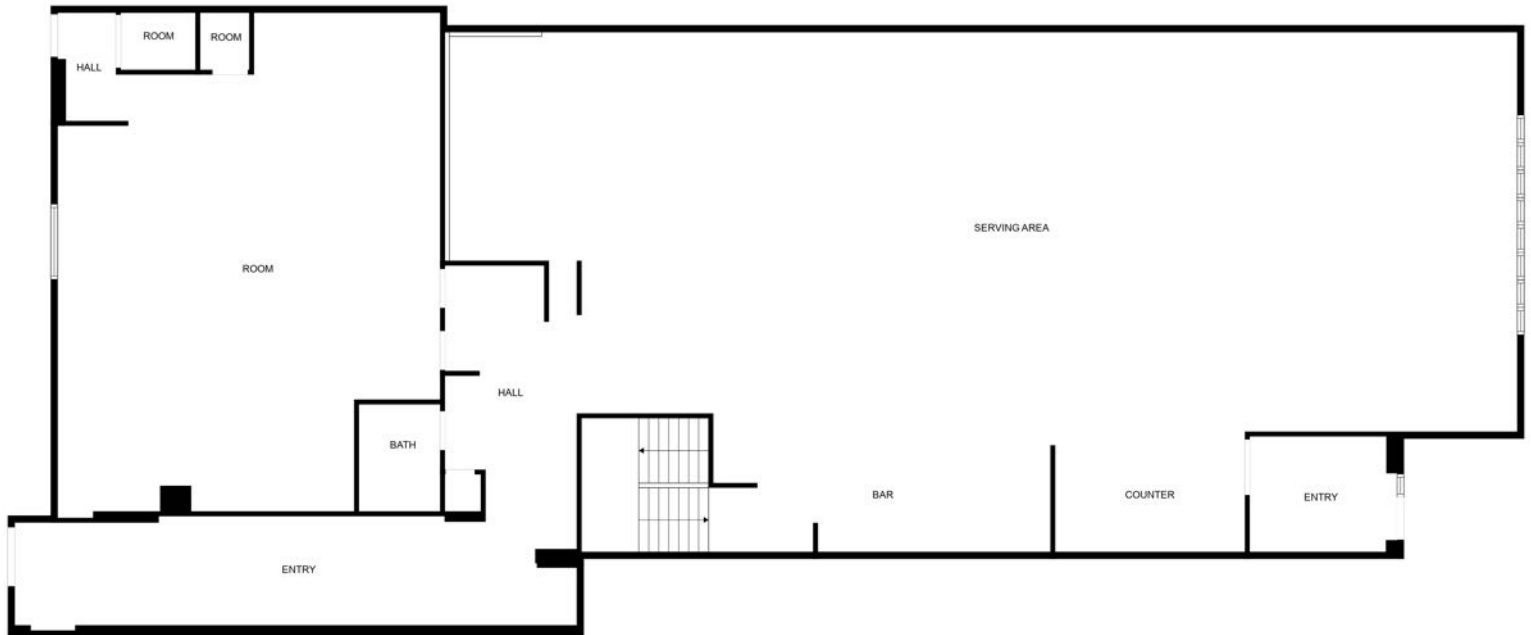


JMJ Commercial Realty
935 Great Plain Avenue #261
Needham, MA 02492
www.jmj-cre.com

Josh Seadia
Principal
617-605-5674
josh@jmj-cre.com

Approx 4,560 sf Retail Space for Lease - 27 Waltham St, Lexington MA

FLOOR PLAN - 1ST FLOOR



MEASUREMENTS ARE CALCULATED BY CUBICASA TECHNOLOGY. DEEMED HIGHLY RELIABLE BUT NOT GUARANTEED.

The information contained herein has been obtained through sources deemed reliable by JMJ Commercial Realty, Inc., but cannot be guaranteed for its accuracy. We recommend to the tenant that any information, which is of special interest, should be obtained through independent verification.



JMJ Commercial Realty
935 Great Plain Avenue #261
Needham, MA 02492
www.jmj-cre.com

Josh Seadia
Principal
617-605-5674
josh@jmj-cre.com