

# 14303

SULLYFIELD CIRCLE, CHANTILLY, VA 20151



## PROPERTY FEATURES (14303)

- Zoned I-5; Fairfax County
- 24' Clear Height
- Dock and Drive-In Loading
- 50'x50' Column Spacing
- Deep Truck Court

## LOCATION

- Intersection of Routes 28 and 50 in Chantilly, VA
- 5 Miles to Dulles Airport, Dulles Toll Road, and Route 66
- Surrounded by numerous shopping, dining, and hotel options

### FOR MORE INFORMATION, PLEASE CONTACT:

**Jon Lawrence**

+1 703 847 2787

[jon.lawrence@cushwake.com](mailto:jon.lawrence@cushwake.com)

**Ed Zaptin**

+1 703 847 2730

[ed.zaptin@cushwake.com](mailto:ed.zaptin@cushwake.com)

**Shane Keeton**

+1 434 249 1416

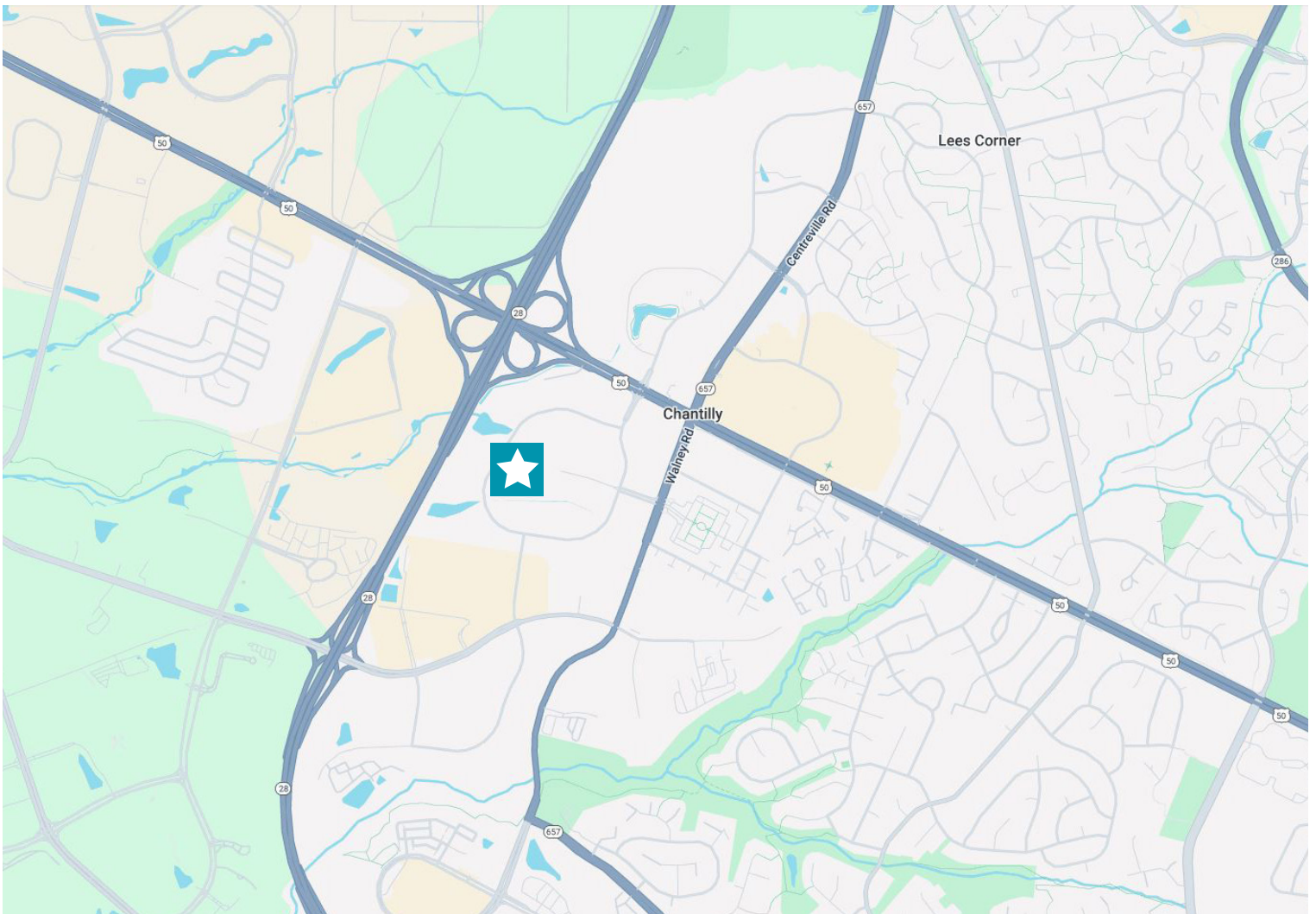
[shane.keeton@cushwake.com](mailto:shane.keeton@cushwake.com)



# 14303

SULLYFIELD CIRCLE, CHANTILLY, VA 20151

## LOCATION MAP



### FOR MORE INFORMATION, PLEASE CONTACT:

**Jon Lawrence**

+1 703 847 2787

[jon.lawrence@cushwake.com](mailto:jon.lawrence@cushwake.com)

**Ed Zaptin**

+1 703 847 2730

[ed.zaptin@cushwake.com](mailto:ed.zaptin@cushwake.com)

**Shane Keeton**

+1 434 249 1416

[shane.keeton@cushwake.com](mailto:shane.keeton@cushwake.com)

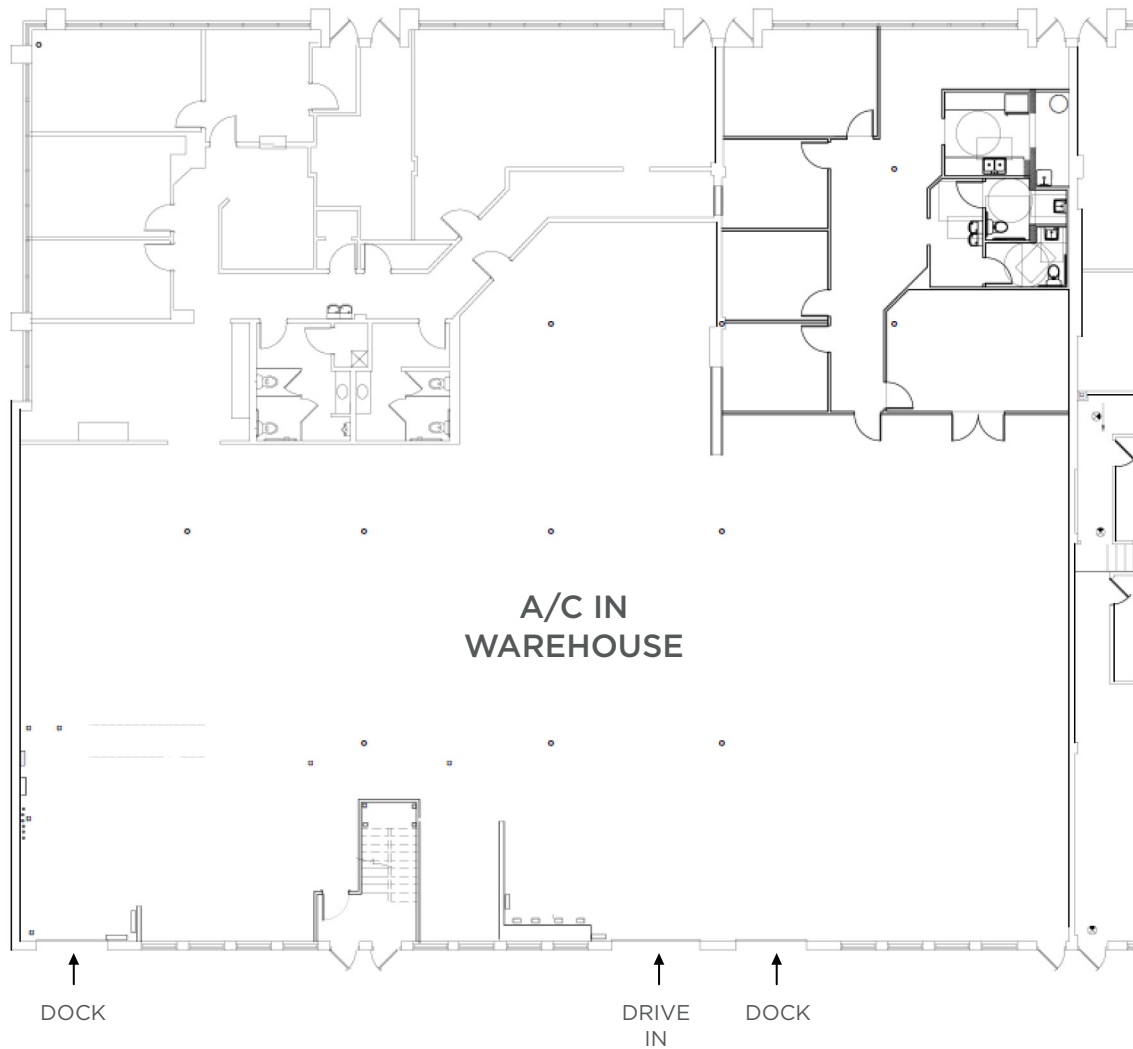


# 14303

SULLYFIELD CIRCLE, CHANTILLY, VA 20151

4,236-12,612 RSF

## 14301 SULLYFIELD CIRCLE | SUITE G-H-I



**FOR MORE INFORMATION, PLEASE CONTACT:**

**Jon Lawrence**  
+1 703 847 2787  
jon.lawrence@cushwake.com

**Ed Zaptin**  
+1 703 847 2730  
ed.zaptin@cushwake.com

**Shane Keeton**  
+1 434 249 1416  
shane.keeton@cushwake.com

