



Up to 2,534 SF - Prime Retail, Office or Medical For Lease

Main Street Commons

190 Main Street

Westport, CT

Fairfield County



Location

On a prominent corner of Westport's busy downtown shopping street, with its own parking

Uses

Zoned Retail

Fully Renovated Spaces on the First and Second Floor

Move-in Condition



yoga45. STUDIO

TD Bank

eyeglasses.com
Clearly Better. Vision+Value®

190 Main Street

CTFN

Catherine H.

Avery Center

VUORI

NÔMADE

SIMON PEARCE

Brooks Brothers

CHASE

EILEEN FISHER

cold fusion

lululemon

Starbucks

BondVet

bluemercury

ATHLETA

west elm

for all mankind

SHOE-INN
SINCE 1972

POTTERY BARN

WHIP SALON

vineyard vines

MEXICUE

ANTHROPOLOGIE

bartaco

OKO

TIFFANY & CO.

south moon under
EST. SUMMER OF 1968

BARNES & NOBLE

MIDDLEMARCH

PAPER SOURCE

GREEN & TONIC

All information from sources deemed reliable and is submitted subject to errors, omissions, change of price, rental, prior sale and withdrawal without notice.

About the Available Space

- Available Space: 1,267 SF on the first floor
1,267 SF on the second floor

Possibility of combining the two spaces via an internal stairway

- Parking: 28 cars in common with the other tenants
- Availability:
 - First Floor – Immediate
 - Second Floor – Immediate
- Outdoor Space: Possibility to use large outdoor exhibit space

Rent

- \$65 SF Gross + Electric (First Floor Space)
- \$28.50 SF Gross + Electric (Second Floor Space)

All information from sources deemed reliable and is submitted subject to errors, omissions, change of price, rental, prior sale and withdrawal without notice.



All information from sources deemed reliable and is submitted subject to errors, omissions, change of price, rental, prior sale and withdrawal without notice.

Entrance Area





All information from sources deemed reliable and is submitted subject to errors, omissions, change of price, rental, prior sale and withdrawal without notice.

Open Area





All information from sources deemed reliable and is submitted subject to errors, omissions, change of price, rental, prior sale and withdrawal without notice.

Looking towards the outdoor exhibit area





All information from sources deemed reliable and is submitted subject to errors, omissions, change of price, rental, prior sale and withdrawal without notice.

Office or Retail Area

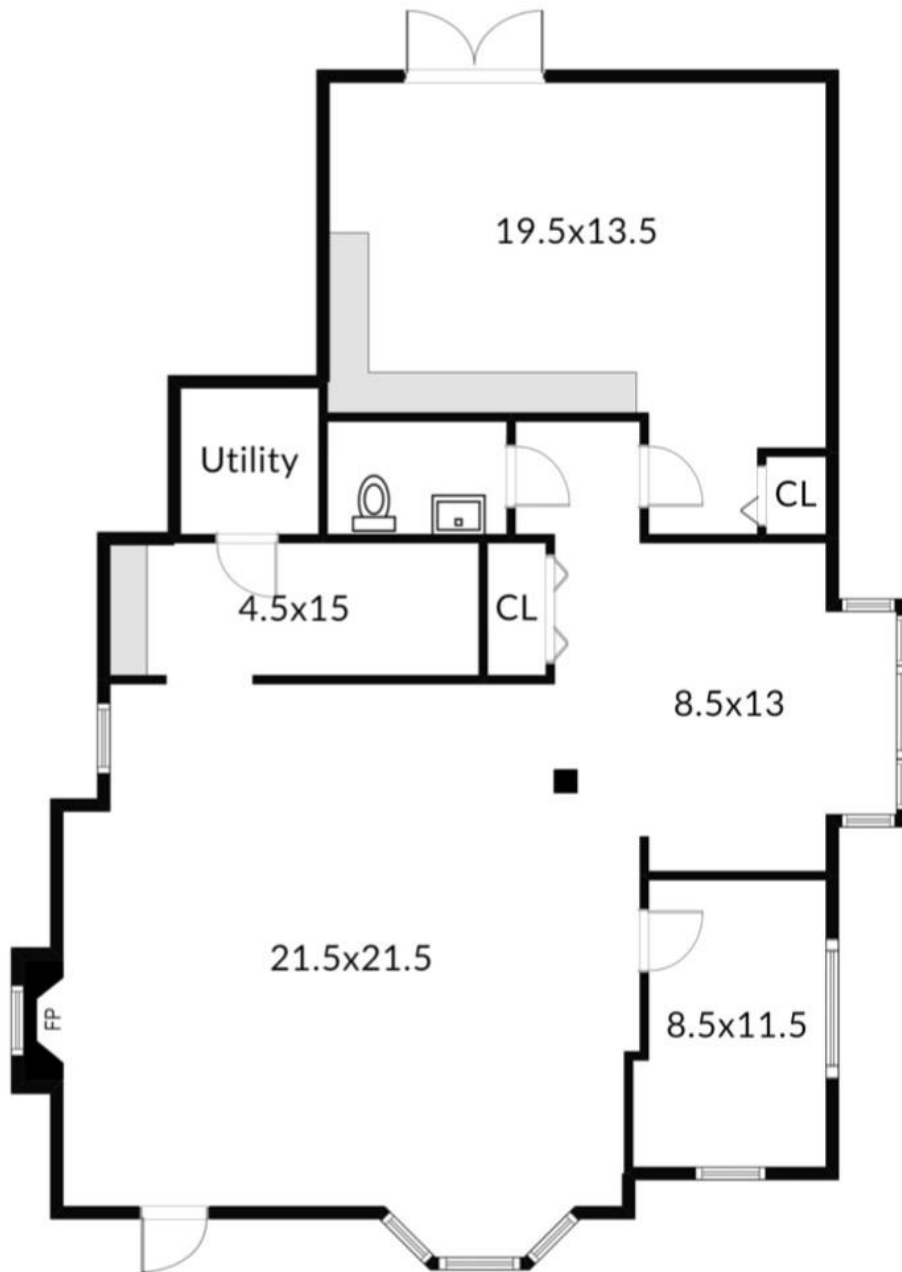




All information from sources deemed reliable and is submitted subject to errors, omissions, change of price, rental, prior sale and withdrawal without notice.

Large Outdoor Exhibit Area





All information from sources deemed reliable and is submitted subject to errors, omissions, change of price, rental, prior sale and withdrawal without notice.

1,267 SF 1st Floor Space





All information from sources deemed reliable and is submitted subject to errors, omissions, change of price, rental, prior sale and withdrawal without notice.

Second Floor Interior





All information from sources deemed reliable and is submitted subject to errors, omissions, change of price, rental, prior sale and withdrawal without notice.

Second Floor Interior

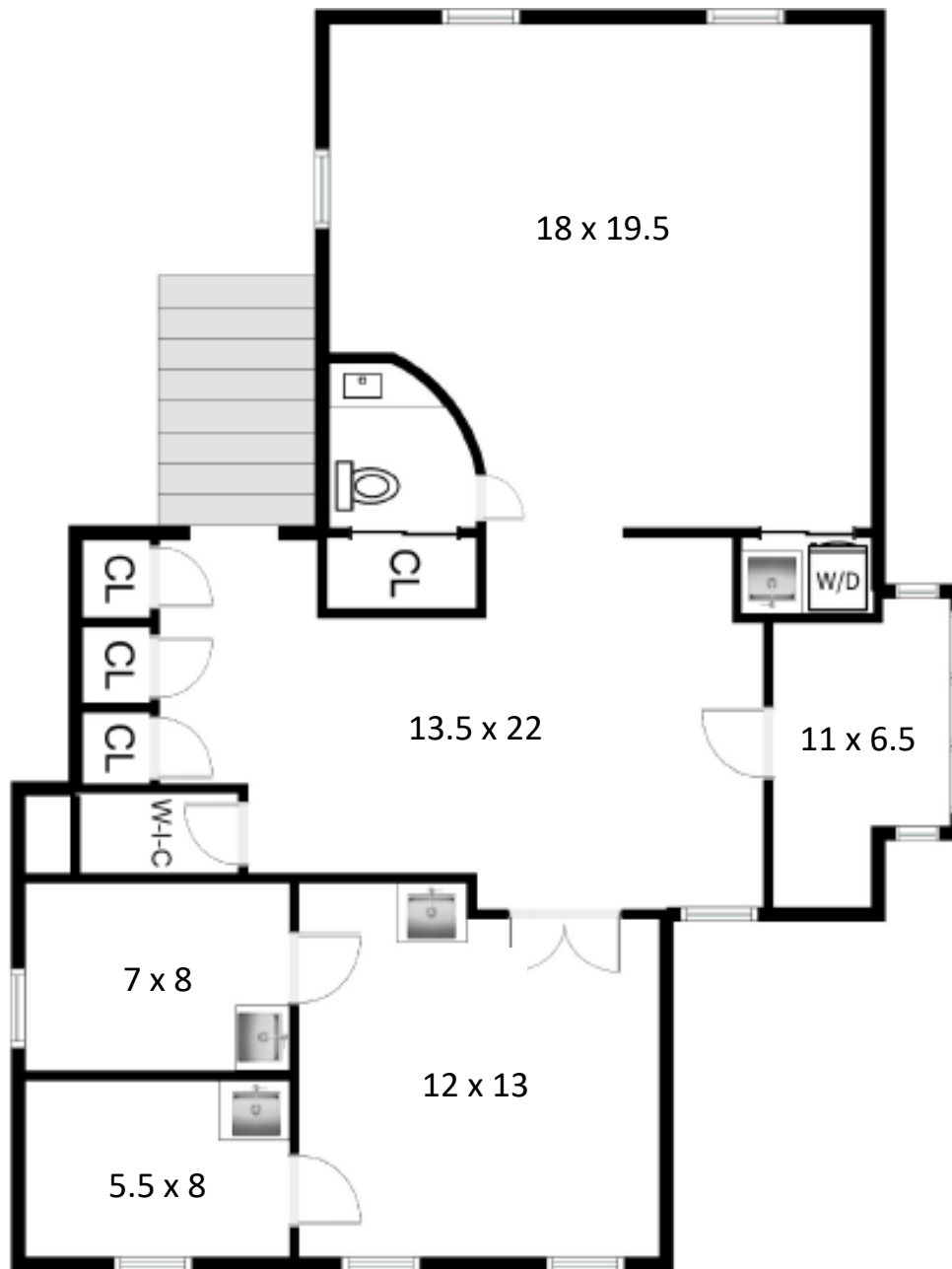




All information from sources deemed reliable and is submitted subject to errors, omissions, change of price, rental, prior sale and withdrawal without notice.

Second Floor Interior



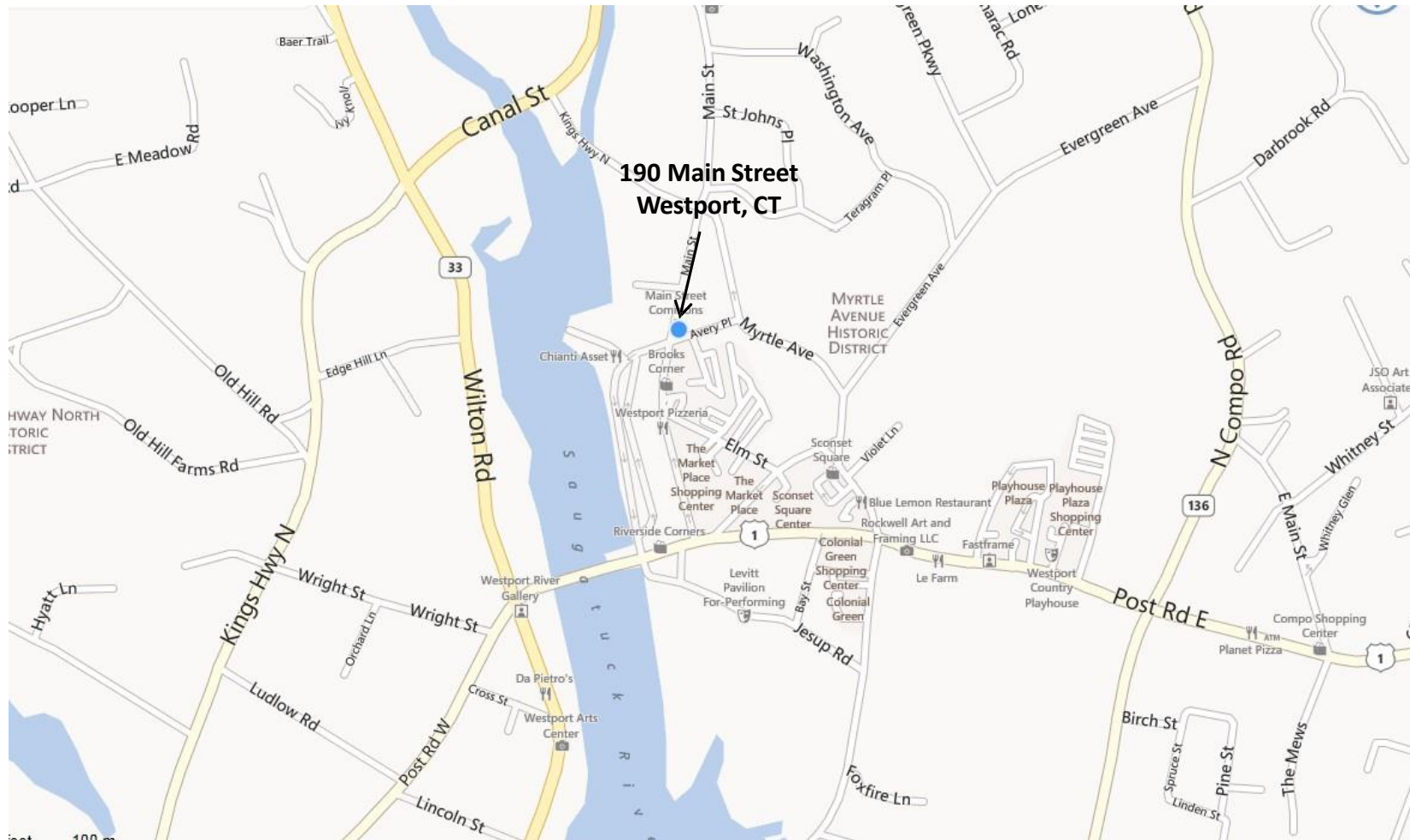


All information from sources deemed reliable and is submitted subject to errors, omissions, change of price, rental, prior sale and withdrawal without notice.

1,267 SF 2nd Floor Space – Retail, Medical or Office



Map



All information from sources deemed reliable and is submitted subject to errors, omissions, change of price, rental, prior sale and withdrawal without notice.

For additional information, please contact:

Franco Fellah
Executive Vice President

HK Group
Commercial Real Estate
253 Riverside Avenue
Westport, CT 06880

203-454-8700
ffellah@hkgrp.com

Mal Jacobson
Executive Vice President

HK Group
Commercial Real Estate
253 Riverside Avenue
Westport, CT 06880

203-454-8700
mjacobson@hkgrp.com

www.hkgrp.com

