



FOR SALE

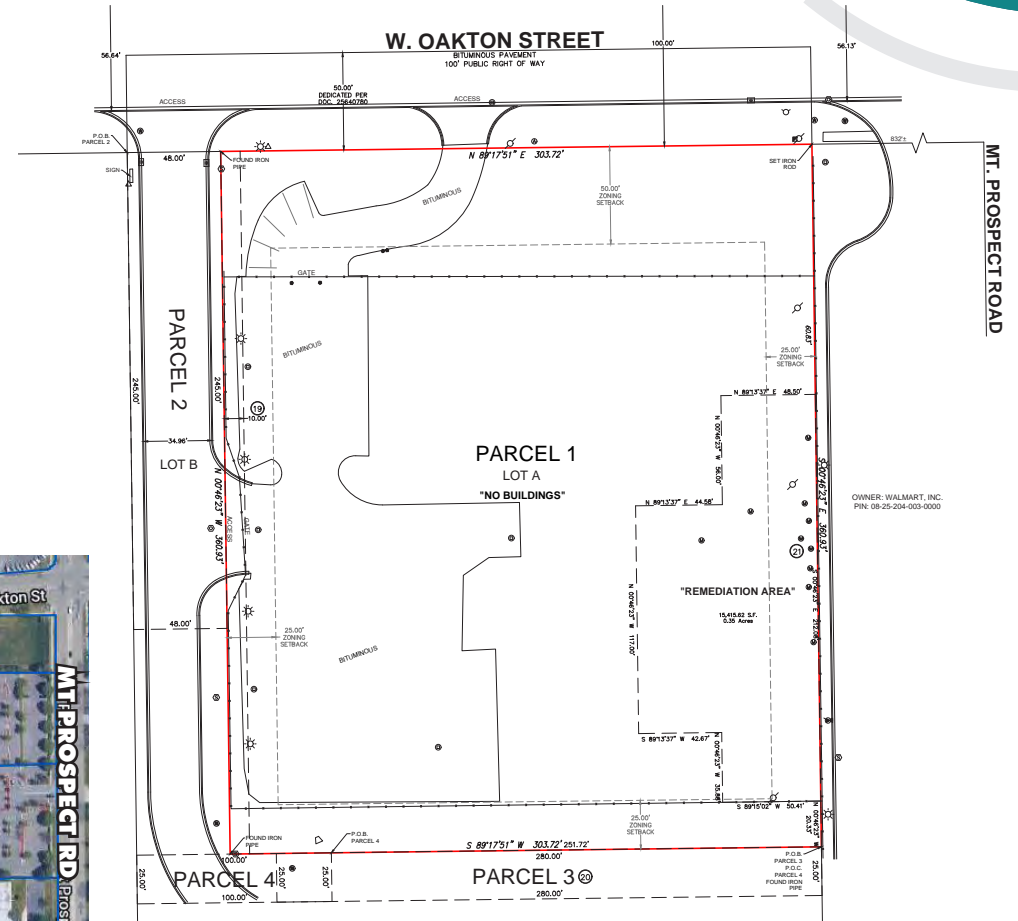
INDUSTRIAL LAND SITE

175 W. OAKTON ST • DES PLAINES, IL 60018

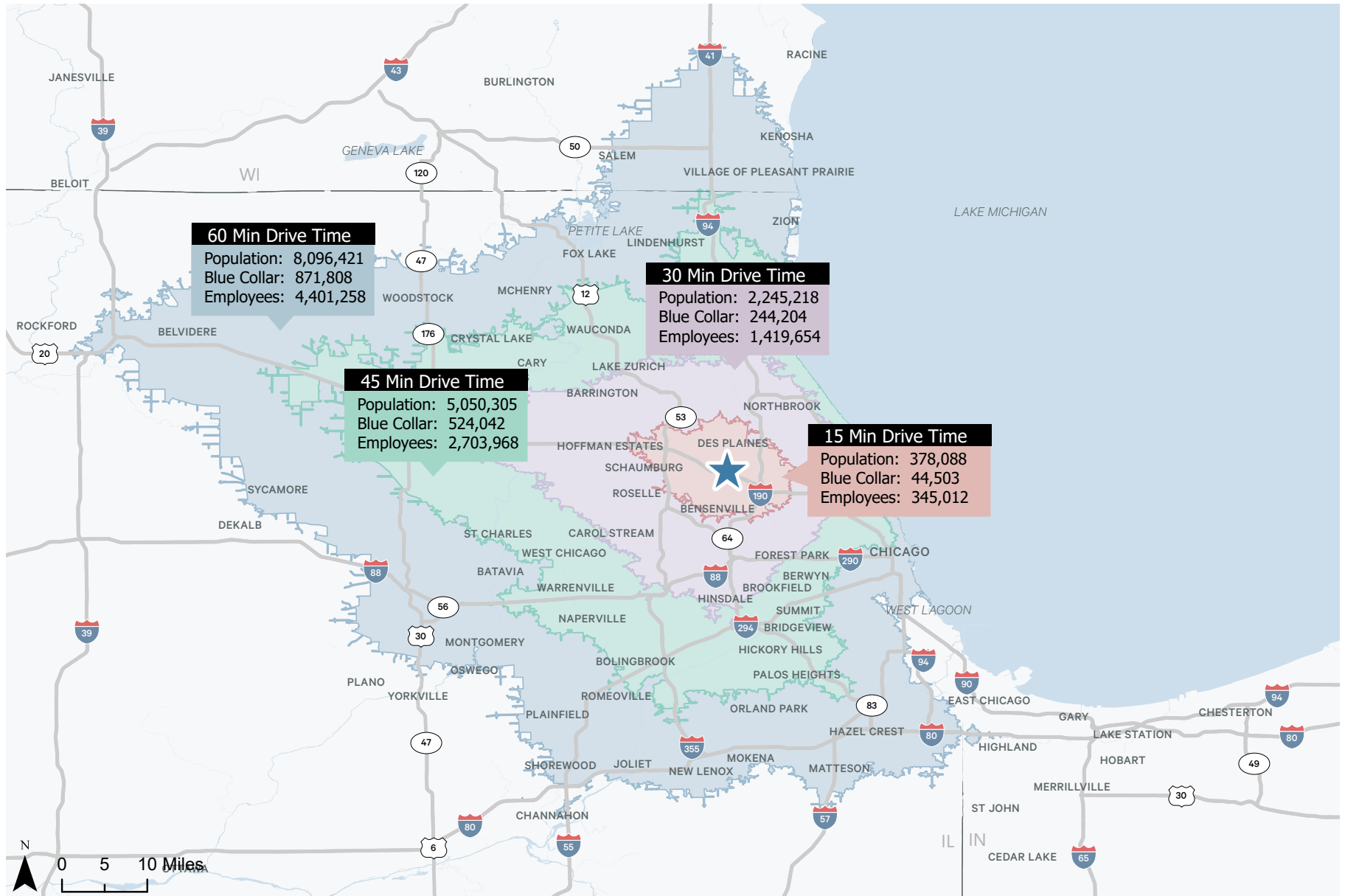
CBRE

PROPERTY FEATURES

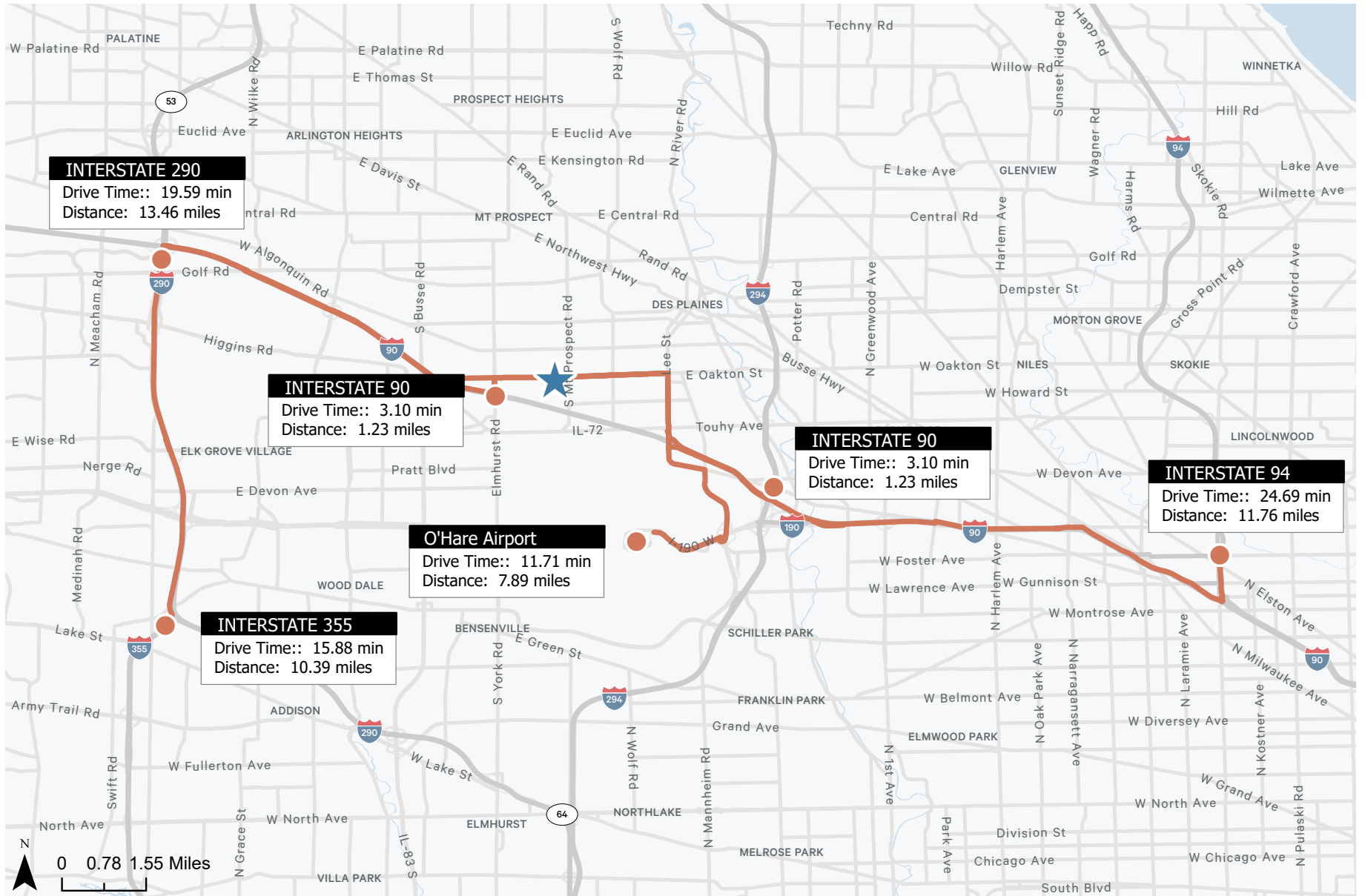
- Site Size: 2.51 Acres
- Maximum Clear Height: 60'
- Zoning: M2 - General Manufacturing District
- Allowed Uses Per Zoning Code: Auto repair, brewery, commercial storage, distribution facility, food processing, heavy and light manufacturing, leasing vehicles, warehouse facility



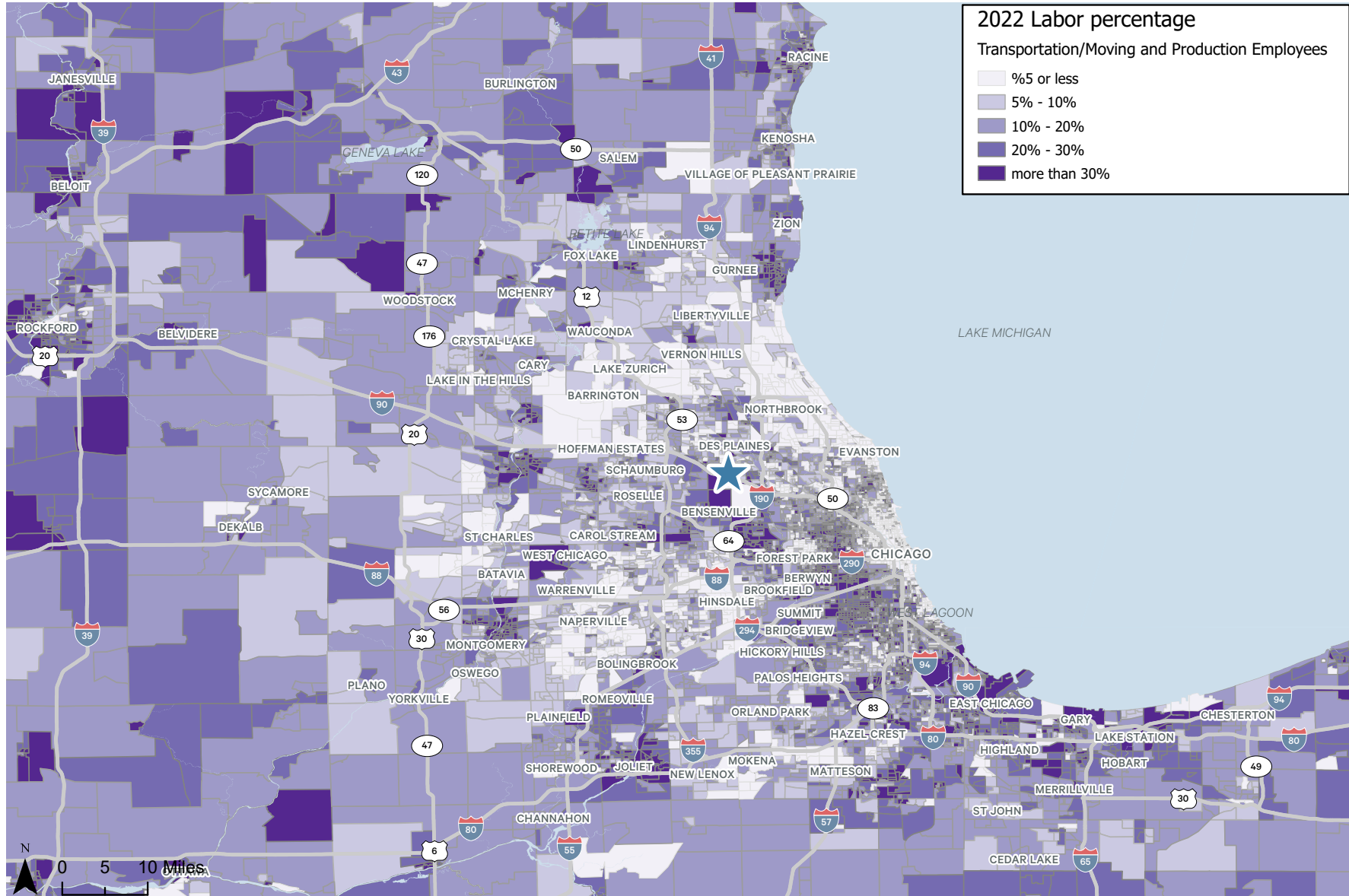
DRIVE TIME MAP



ACCESS MAP



LABOR MAP





CONTACT US

JASON LEV

Executive Vice President
+1 847 706 4044
jason.lev@cbre.com

JOHN SUERTH, SIOR

Executive Vice President
+1 847 706 4929
john.suerth@cbre.com

JIMMY KOWALCZYK

First Vice President
+1 630 368 5548
jimmy.kowalczyk@cbre.com

© 2023 CBRE, Inc. All rights reserved. This information has been obtained from sources believed reliable, but has not been verified for accuracy or completeness. You should conduct a careful, independent investigation of the property and verify all information. Any reliance on this information is solely at your own risk. CBRE and the CBRE logo are service marks of CBRE, Inc. All other marks displayed on this document are the property of their respective owners, and the use of such logos does not imply any affiliation with or endorsement of CBRE. Photos herein are the property of their respective owners. Use of these images without the express written consent of the owner is prohibited.

CBRE