

# **Warehouse Spaces For Lease Elizabeth New Jersey**



**828 Newark Ave, Elizabeth NJ 07208**

**Different Sizes Available**



**Option 1:**

**Square Footage: 11,500**

Ceiling Height: 9,000 SF is 13'2 High and 2,500 SF is 20' High.

Overhead Doors: 2

Office Space: Yes

Bathrooms: 3

Sprinklered: Wet

Parking: 3 Cars

Zoning: Industrial / Light Manufacturing / Office / Retail

Lease Term: Short or Long Term

Monthly Rent: \$17,250.00

**ALL IN \_ NO EXTRA COST**

**Option 2:**

**Square Footage: 8,000**

Ceiling Height: 5,500 SF is 13'2 High and 2,500 SF is 20' High.

Overhead Doors: 1

Office Space: Yes

Bathrooms: 2

Sprinklered: Wet

Parking: 2 Cars

Zoning: Industrial / Light Manufacturing / Office / Retail

Lease Term: Short or Long Term

Monthly Rent: \$12,000.00

**ALL IN \_ NO EXTRA COST**

### **Option 3:**

#### **Square Footage: 4,000**

Ceiling Height: 2,500 SF is 20' High and 1,500 SF is 13'2 High.

Overhead Doors: 1

Office Space: Yes

Bathrooms: 1

Sprinklered: Wet

Parking: 1 Cars

Zoning: Industrial / Light Manufacturing / Office / Retail

Lease Term: Short or Long Term

Monthly Rent: \$7,200.00

**ALL IN \_ NO EXTRA COST**



#### **Option 4:**

**Square Footage: 3,500**

Ceiling Height: 13'2 High.

Overhead Doors: 1

Office Space: Yes

Bathrooms: 1

Sprinklered: Wet

Parking: 1 Cars

Zoning: Industrial / Light Manufacturing / Office / Retail

Lease Term: Short or Long Term

Monthly Rent: \$6,000.00

**ALL IN \_ NO EXTRA COST**

## **Option 5:**

**Square Footage: 2,000**

Ceiling Height: 13'2 High

Overhead Doors: Only wide Regular Door [ Possibility to add overhead door]

Office Space: Yes

Bathrooms: 1

Sprinklered: Wet

Parking: 1 Cars

Zoning: Industrial / Light Manufacturing / Office / Retail

Lease Term: Short or Long Term

Monthly Rent: \$3,000.00

**ALL IN \_ NO EXTRA COST**

**Part That is High Ceiling**





Part low ceiling





















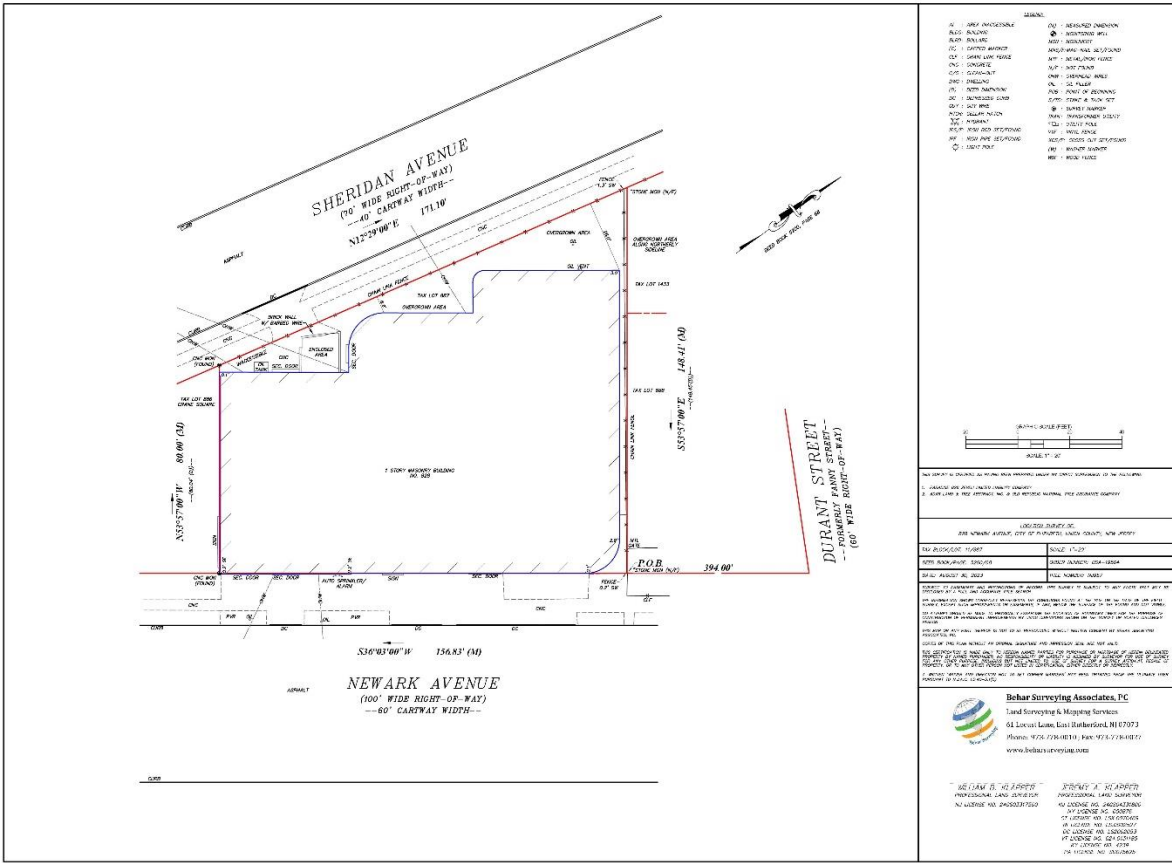












**For more information contact**

**Zev Klein**

**347-578-4486**