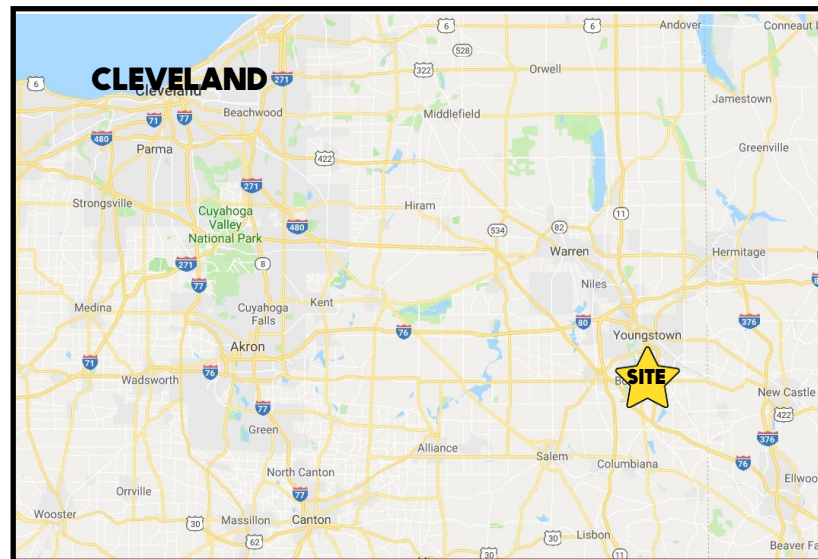


LOCATION

810 Ron Park Place, Boardman, OH 44512



TRAFFIC

Boardman Canfield Rd = 33,649 VPD

HIGHLIGHTS

- Newly renovated medical office condo
- Large, first floor space with waiting room, large front desk area, private doctor office w/full bath and shower, and several exam rooms
- Lots of parking available

CONTACT

THERESA MORSE

330.518.6082

tmorse@platzrealtygroup.com

Office: 330.757.4889 | Fax: 330.294.5622 | 3830 Starr Centre Dr, Suite 2, Canfield, OH 44406

www.PLATZREALTYGROUP.com



Office: 330.757.4889 | Fax: 330.294.5622 | 3830 Starr Centre Dr, Suite 2, Canfield, OH 44406

www.PLATZREALTYGROUP.com

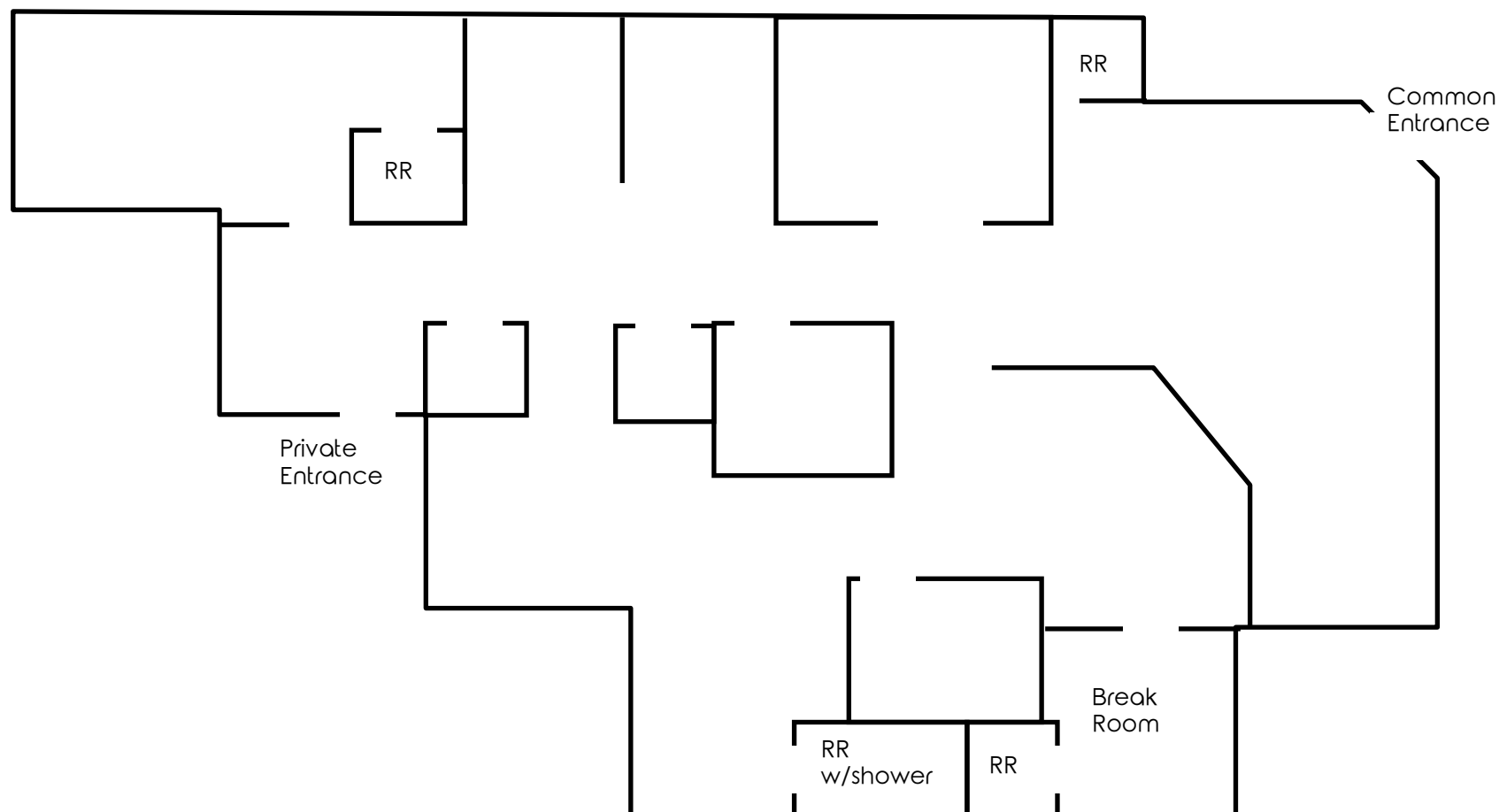
The information presented was obtained from sources believed to be true and reliable. The Platz Realty Group makes no warranties or guarantees to the accuracy of the information.



Office: 330.757.4889 | Fax: 330.294.5622 | 3830 Starr Centre Dr, Suite 2, Canfield, OH 44406

www.PLATZREALTYGROUP.com

The information presented was obtained from sources believed to be true and reliable. The Platz Realty Group makes no warranties or guarantees to the accuracy of the information.

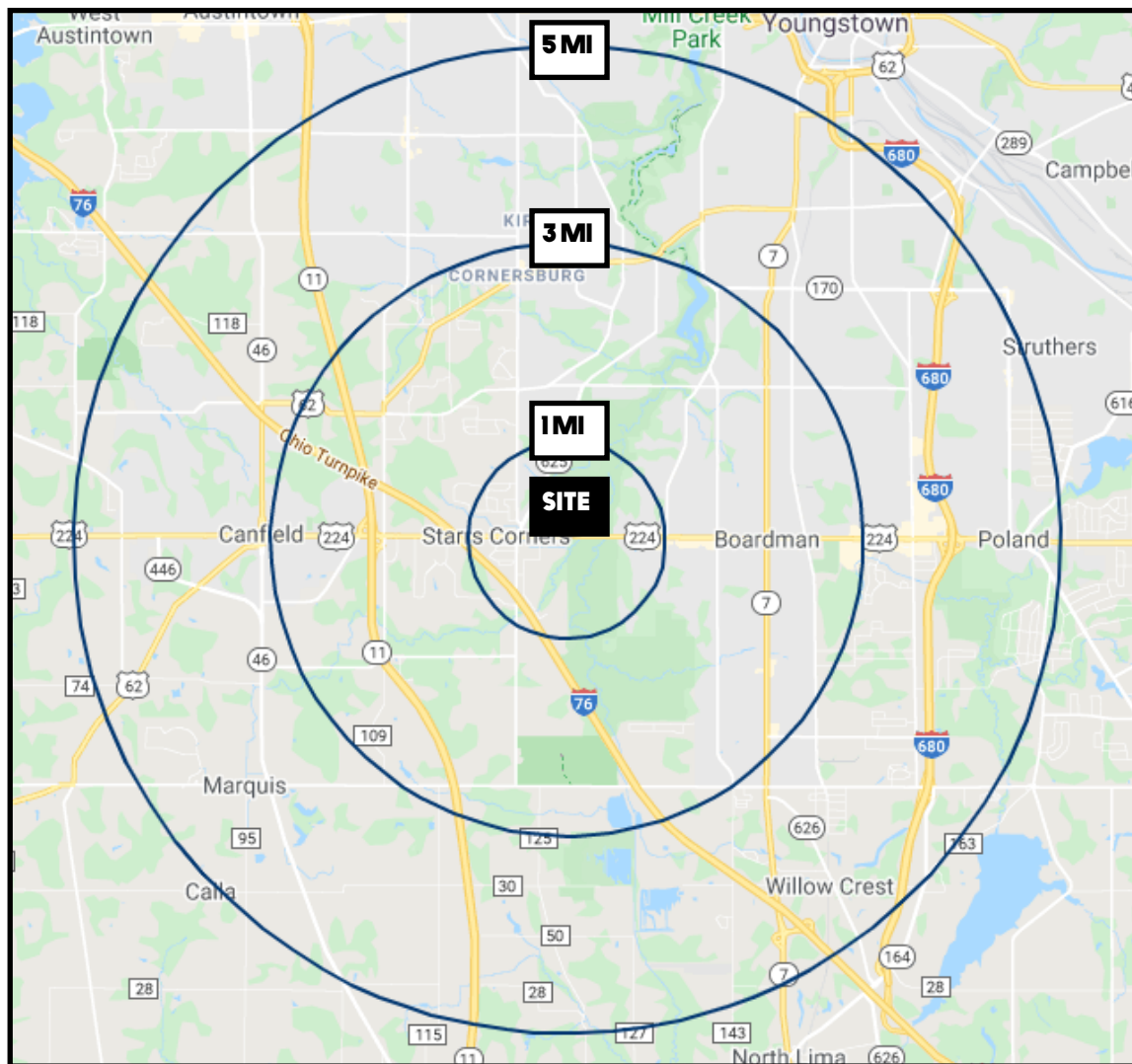


Office: 330.757.4889 | Fax: 330.294.5622 | 3830 Starr Centre Dr, Suite 2, Canfield, OH 44406

www.PLATZREALTYGROUP.com



The information presented was obtained from sources believed to be true and reliable. The Platz Realty Group makes no warranties or guarantees to the accuracy of the information.



DEMOGRAPHICS	1MI	3MI	5MI
POPULATION	5,901	39,813	106,231
HOUSEHOLDS	2,608	17,413	45,455
MEDIAN AGE	45	45	44
AVERAGE HH INCOME	\$74,872	\$64,093	\$53,431

SITE INFORMATION	
LOCATION	Boardman Township Mahoning County
PROPERTY TYPE	Medical Office
SIZE	3,164 SF
UTILITIES	Separately metered
SIGNAGE	Monument sign
RENT	\$12.19/SF Gross

Office: 330.757.4889 | Fax: 330.294.5622 | 3830 Starr Centre Dr, Suite 2, Canfield, OH 44406

www.PLATZREALTYGROUP.com