

FOR LEASE - OFFICE SPACE

1550 MOFFETT ST.

Salinas, CA 93905

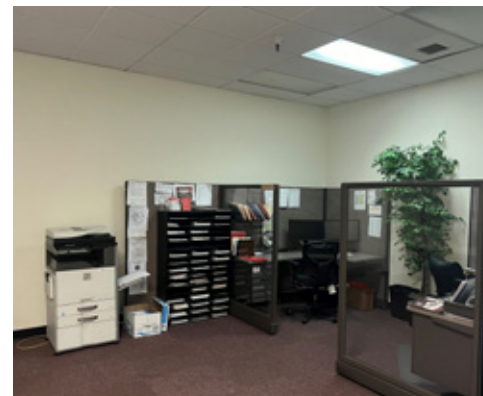


±3,909 Square Feet of Office Available
Asking Rent \$2.00 PSF, Modified Gross

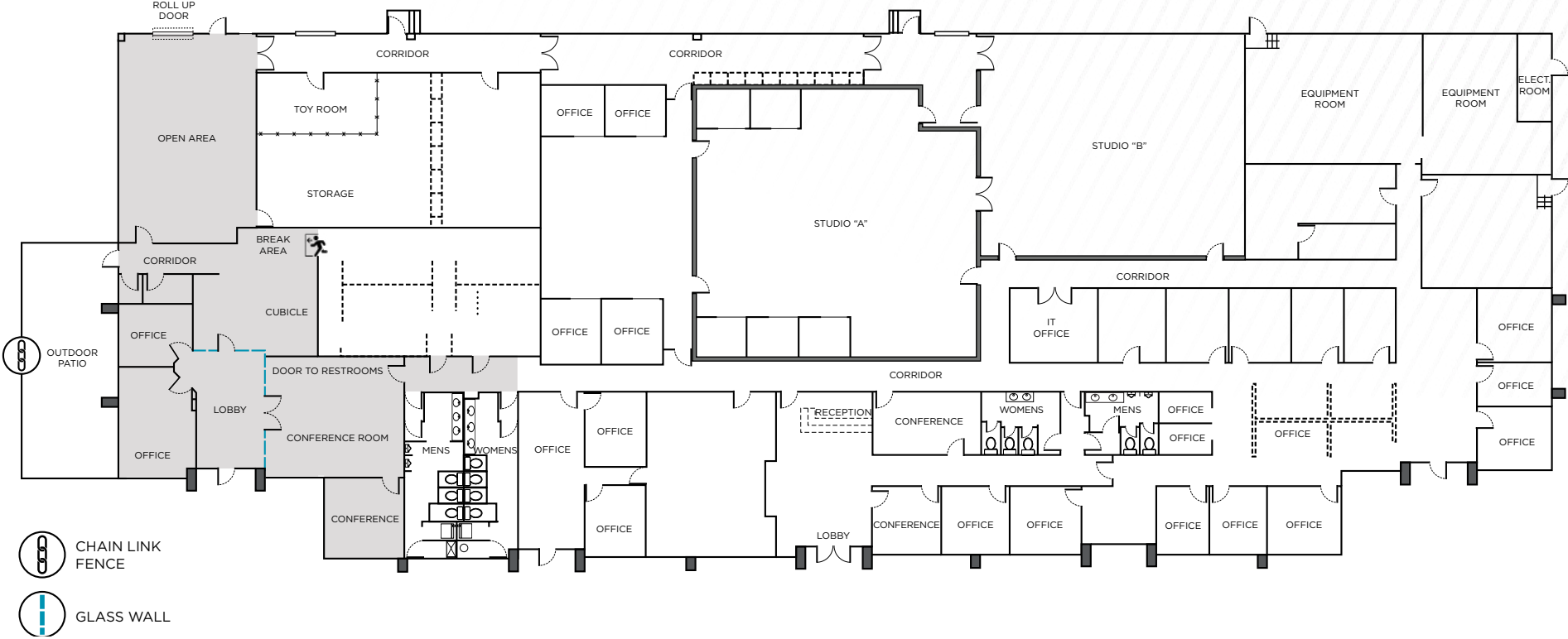


PROPERTY HIGHLIGHTS

- Salinas premier business park
- Ample parking with some secured parking
- Zoned industrial business park (“IBP”)
- Centrally located with easy access to Highway 101
- Tenant improvements negotiable
- Tenant pays their pro-rated share of operating expenses



FLOOR PLAN



FOR MORE INFORMATION, PLEASE CONTACT:

Greg Findley

+1 831 755 1639

greg.findley@cushwake.com

LIC #01170453

Leticia Bugarin

+1 831 999 8877 Ext.24

leticiabugarin@atlaspremierproperties.com

LIC #01978668

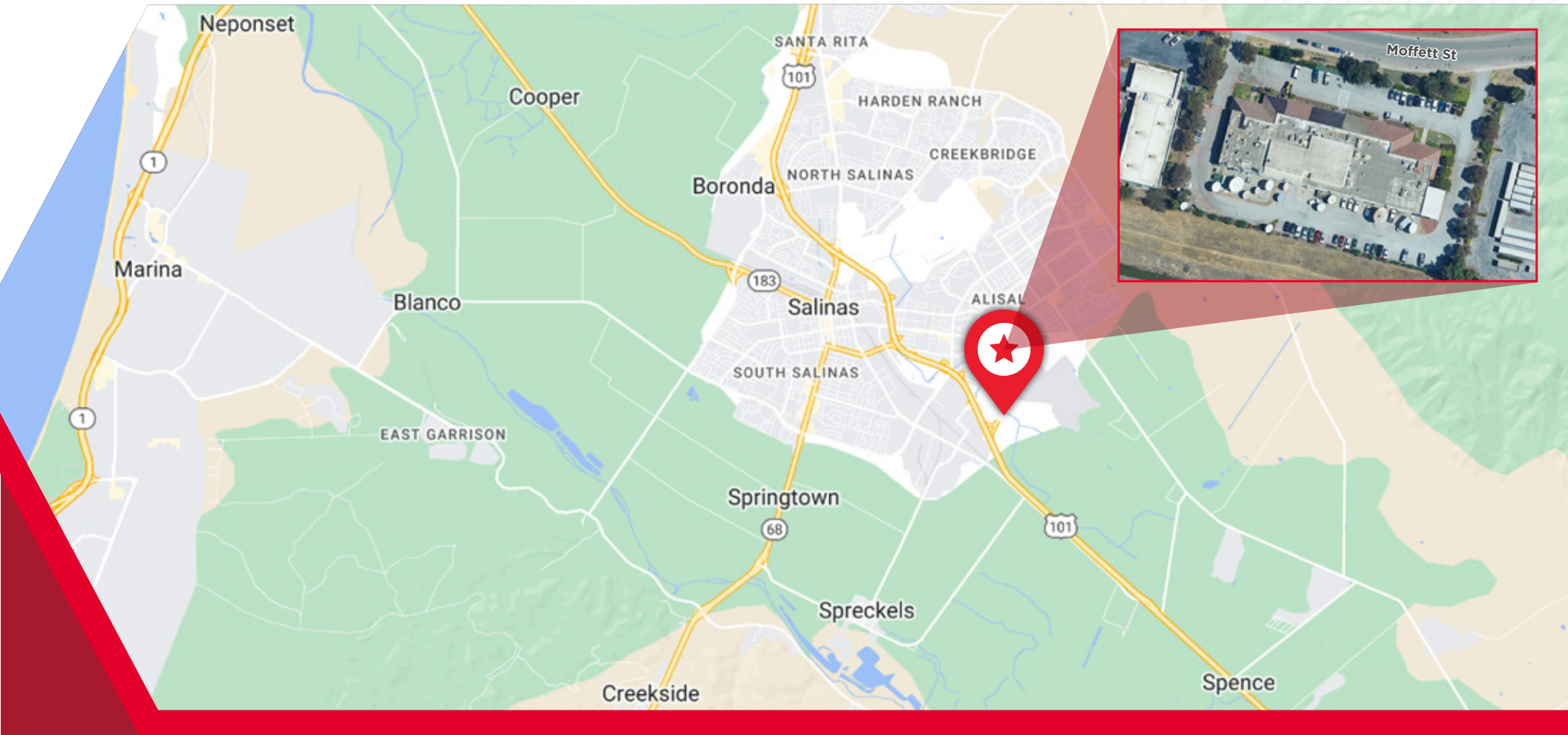
328-B Main Street

Salinas, California 93901

main +1 831 449 8000

fax +1 831 769 0314

cushmanwakefield.com



©2024 Cushman & Wakefield. All rights reserved. The information contained in this communication is strictly confidential. This information has been obtained from sources believed to be reliable but has not been verified. NO WARRANTY OR REPRESENTATION, EXPRESS OR IMPLIED, IS MADE AS TO THE CONDITION OF THE PROPERTY (OR PROPERTIES) REFERENCED HEREIN OR AS TO THE ACCURACY OR COMPLETENESS OF THE INFORMATION CONTAINED HEREIN, AND SAME IS SUBMITTED SUBJECT TO ERRORS, OMISSIONS, CHANGE OF PRICE, RENTAL OR OTHER CONDITIONS, WITHDRAWAL WITHOUT NOTICE, AND TO ANY SPECIAL LISTING CONDITIONS IMPOSED BY THE PROPERTY OWNER(S). ANY PROJECTIONS, OPINIONS OR ESTIMATES ARE SUBJECT TO UNCERTAINTY AND DO NOT SIGNIFY CURRENT OR FUTURE PROPERTY PERFORMANCE.

