

SHERMAN, MS

# I-22 AND SR 9

2-30 ACRES AVAILABLE



# PROJECT DETAILS

I-22 & SR 9 • 2 - 30 ACRES AVAILABLE

## PROPERTY HIGHLIGHTS

- 2-30 Acres Available (divisible)
- Over 32,000 cars pass this interstate exit daily
- Regionally located northwest of Tupelo MSA
- Excellent access, traffic, and visibility

## ZONING

Commercial

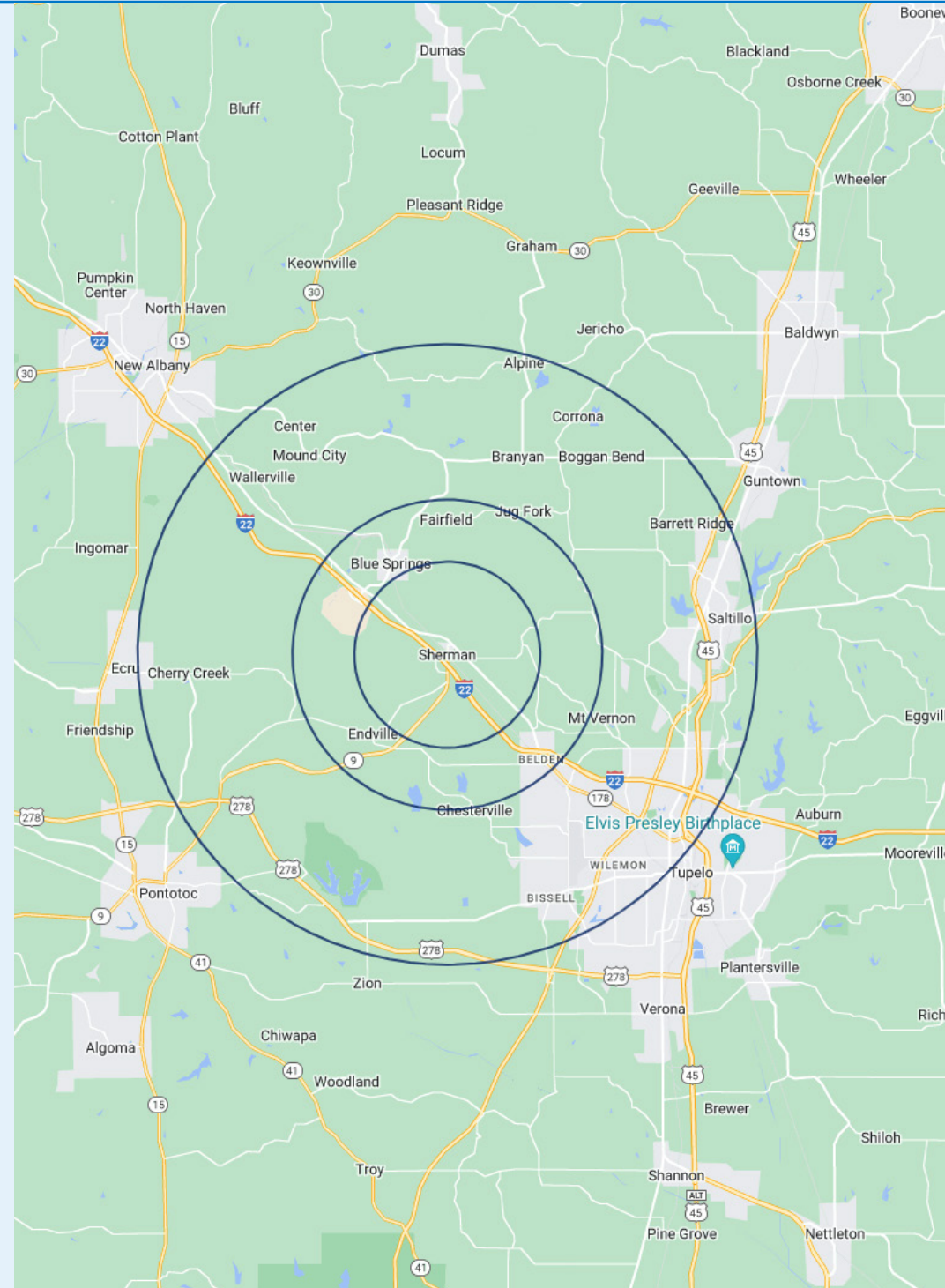
## COUNTY

Pontotoc

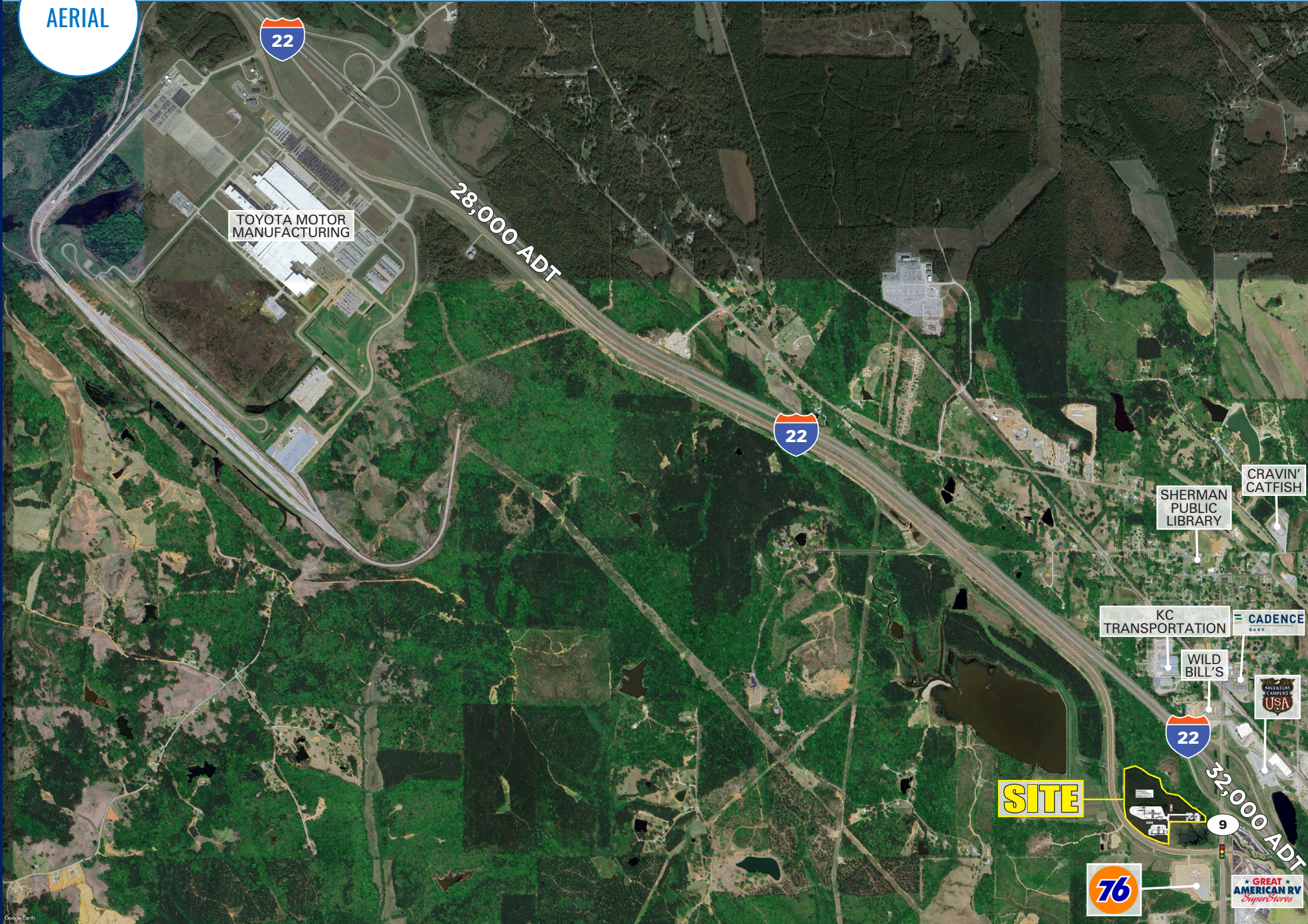
## MARKET

Sherman

	3 MILES	5 MILES	10 MILES
 <b>POPULATION</b>	2,559	6,278	50,893
 <b>DAYTIME POPULATION</b>	284	1,538	20,830
 <b>MEDIAN HH INCOME</b>	\$81,849	\$88,179	\$80,967



AERIAL



SHERMAN, MS

# I - 22 & SR 9

**ANDREW SADOWSKY**

215.873.5313  
ASADOWSKY@ATLANTICRETAIL.COM

**SHELLEY JORDAN BELL**

404.759.5464  
SJBELL@ATLANTICRETAIL.COM



**ALBANY**

**ATLANTA**  
FIVE PIEDMONT CENTER, STE 210  
3525 PIEDMONT ROAD NE  
ATLANTA, GA 30305  
470-766-1777

- BOSTON**
- CHARLOTTE**
- LOS ANGELES**
- NEW YORK CITY**
- ORLANDO**
- PITTSBURGH**
- WEST PALM BEACH**

[WWW.ATLANTICRETAIL.COM](http://WWW.ATLANTICRETAIL.COM)

[LINKEDIN.COM/COMPANY/ATLANTIC-RETAIL-PROPERTIES](https://www.linkedin.com/company/atlantic-retail-properties)  
 [INSTAGRAM.COM/ATLANTIC\\_RETAIL/](https://www.instagram.com/atlantic_retail/)

RETAIL ADVISORS



SHERMAN PUBLIC LIBRARY

CRAVIN' CATFISH

KC TRANSPORTATION

CADENCE BANK

WILD BILL'S

ADVENTURE CAMPERS USA

**SITE**



9

32,000 ADT



GREAT AMERICAN RV SuperStores