



# CAMINO CORPORATE CENTER

2345 Camino Vida Roble  
9,720 RSF

Lease Rate: \$1.45 / RSF NNN (\$0.47 / RSF)



Jeff Abramson  
jabramson@lee-associates.com  
(760) 929-7835 | CalBRE Lic# 00956805

Barry Hendler  
bhendler@lee-associates.com  
(760) 448-2438 | CalBRE Lic# 01008239

# Availability

ADDRESS	RSF	LEASE RATE	FEATURES
2345 Camino Vida Roble	9,720 RSF	\$1.45 / RSF NNN	Lobby, 30% office, Kitchen/ Break Room, Two (2) sets of restrooms, Warehouse, Two (2) grade-level doors

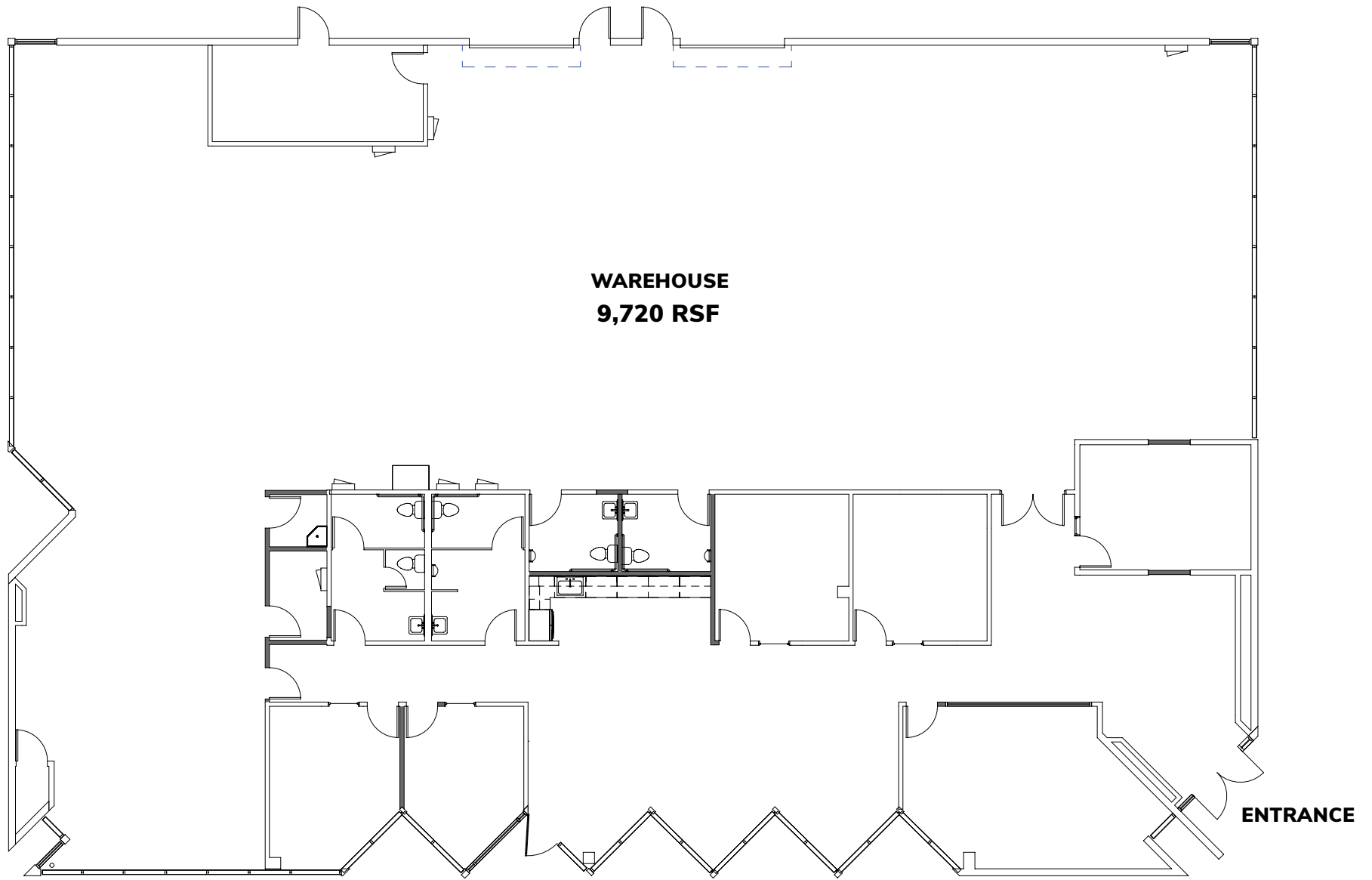
\*NNN = \$0.47 / RSF



Jeff Abramson  
jabramson@lee-associates.com  
(760) 929-7835 | CalBRE Lic# 00956805

Barry Hendler  
bhendler@lee-associates.com  
(760) 448-2438 | CalBRE Lic# 01008239

## 2345 Camino Vida Roble





# Site Layout





