

INDUSTRIAL / WAREHOUSE SPACE FOR LEASE

3375 FILLMORE RIDGE HEIGHTS

COLORADO SPRINGS, CO



BUILDING FOR LEASE

	Square Feet	Monthly Rent \$12.00/SF	NNNs \$4.00/SF	Monthly Total excl. utilities
3375:	6,075	\$6,075	\$2,025	\$8,100

ZONING:	BP
YEAR BUILT / RENOVATED:	1999
EXTERIOR STORAGE:	Fenced Yard

- 4 Drive-In Doors (14')
- 16' Interior Clear Height
- 800-Amp Power Available
- Partitioned Offices Built-Out In ~ 3,000 SF

PROPERTY SUMMARY

DRIVE TIME - MINUTES:

	5 MIN	10 MIN	15 MIN
2024 Est. Population	6,991	68,673	249,945
2024 Est. HHs	3,460	31,759	110,571
2024 Est. Avg. HH Income	\$71,122	\$73,174	\$77,890

RADIUS - MILES:

	1 MILE	3 MILES	5 MILES
2024 Est. Population	11,753	71,079	190,831
2024 Est. HHs	5,654	32,613	85,899
2024 Est. Avg. HH Income	\$61,228	\$75,098	\$78,130

ACCESS TO I-25: 0.6 MILES

Source: Esri, Esri-Data Axle, U.S. Census, Traffic Data: 2018-2021 Kalibrate Technologies



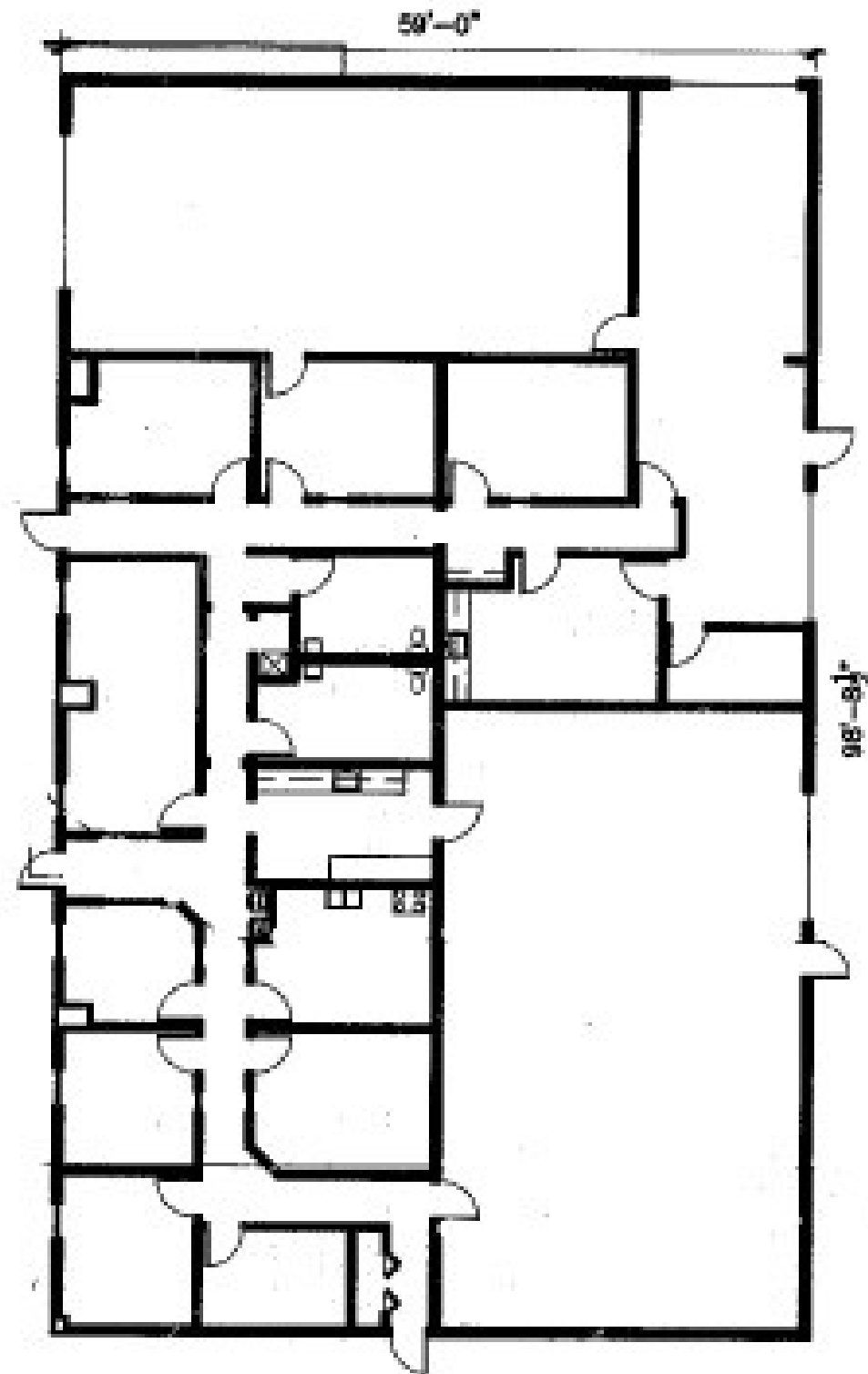
Mike or Matt Craddock

mike@craddockcommercial.com

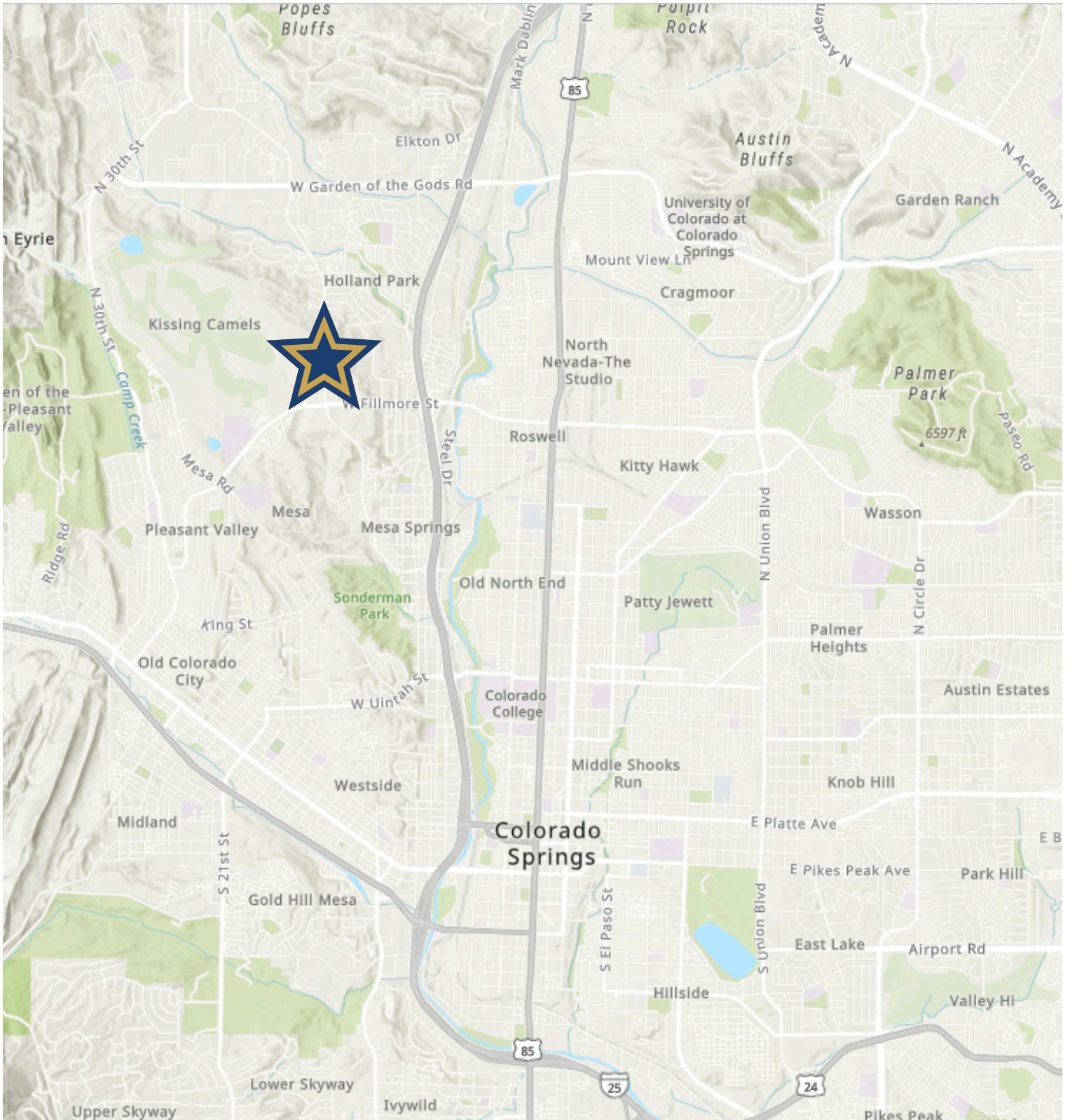
matt@craddockcommercial.com

719.630.2233 | craddockcommercial.com

FLOOR PLAN | 3375 Fillmore Ridge Heights



SURROUNDING AREA



337 E. Pikes Peak Ave | Suite 200
Colorado Springs, CO 80903
719.630.2233 • craddockcommercial.com

Mike or Matt Craddock
mike@craddockcommercial.com
matt@craddockcommercial.com