



OFFICE / DATA CENTER FOR LEASE

# 190 Park Center Plaza San Jose, CA 95113

**ERIC JONG**

(669) - 300 - 6048

[eric@guggenheimrgi.com](mailto:eric@guggenheimrgi.com)

CalDRE #01486494

**AL GUGGENHEIM**

(669) - 300 - 6041

[al@guggenheimrgi.com](mailto:al@guggenheimrgi.com)

CalDRE #00943363

**(669) - 300 - 6040 GUGGENHEIMRGI.COM CalDRE #01792244**

"No warranty or representation expressed or implied is made as to the accuracy of the above information. This information is submitted subject to errors, omissions, change of price, rental rates or other conditions, withdrawal notice, and any special listing conditions."

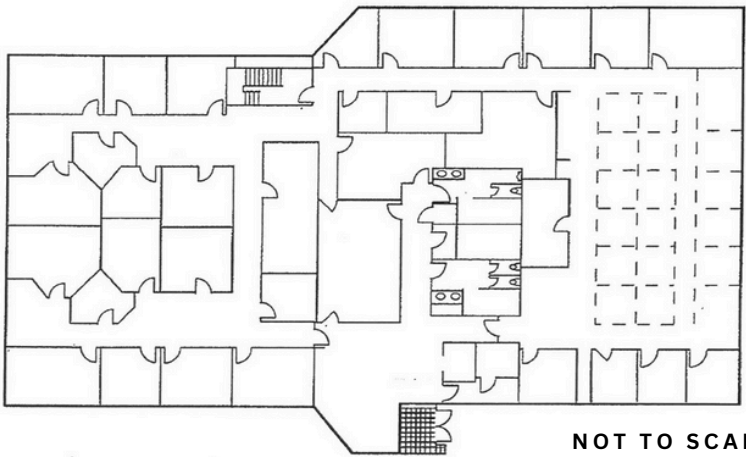
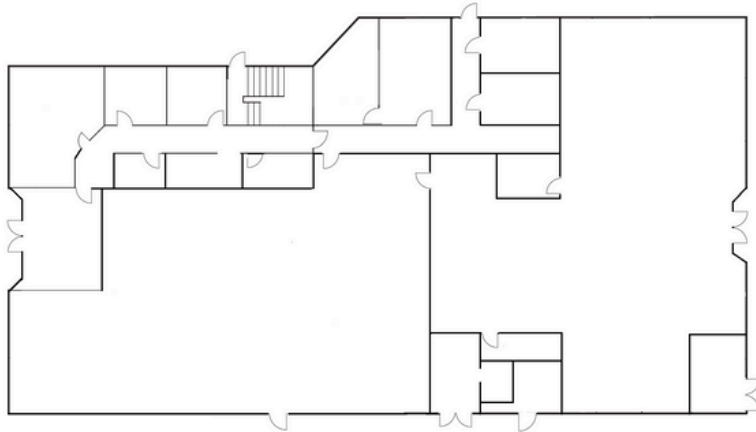


SPACE  
22,010 SF

LEASE RATE  
\$3.95 SF/MO NNN



**1st Floor**  
**10,411 SF**



**2nd Floor**  
**11,599 SF**

NOT TO SCALE

## OFFERING SUMMARY

<b>Building Size:</b>	22,010
<b>Available SF:</b>	22,010
<b>Lot Size:</b>	0.64 Acres
<b>Zoning:</b>	C3



## PROPERTY OVERVIEW

- Convenient first floor location previously built out as a Data Center and Office.
- Centrally located in downtown San Jose with nearby restaurants, hotels, and retail businesses.
- High Speed Internet Available: AT&T Fiber

SPACES	LEASE RATE	SPACE SIZE
190 Park Center	\$3.95 SF/MO NNN	10,411 SF



(669) - 300 - 6040 GUGGENHEIMRGI.COM CalDRE #01792244

"No warranty or representation expressed or implied is made as to the accuracy of the above information. This information is submitted subject to errors, omissions, change of price, rental rates or other conditions, withdrawal notice, and any special listing conditions."



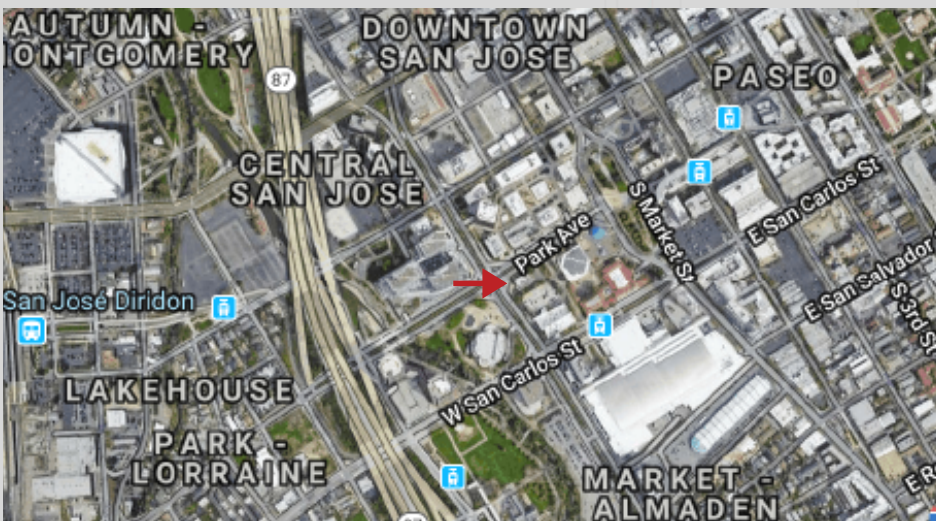
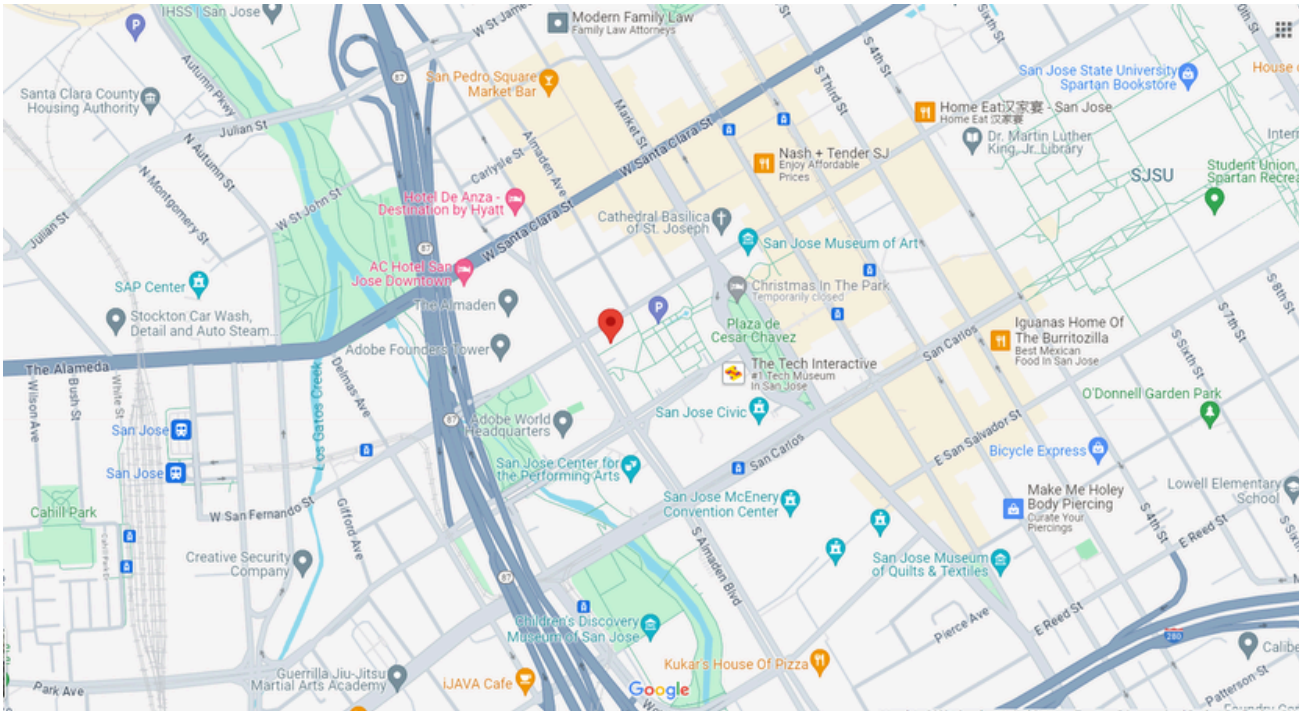


SPACE  
10,411 SF

LEASE RATE  
\$3.95 SF/MO NNN



## Location Maps: 190 Park Center Plaza



### NEARBY AMENITIES

- San Pedro Square Market Place
- San Jose City Hall
- Cesar Chavez Plaza
- SAP Center
- San Jose Convention Center
- San Jose State University
- San Jose Diridon Transit Station

(669) - 300 - 6040 GUGGENHEIMRGI.COM CaDRE #01792244

"No warranty or representation expressed or implied is made as to the accuracy of the above information. This information is submitted subject to errors, omissions, change of price, rental rates or other conditions, withdrawal notice, and any special listing conditions."

