

85 SOUTH LOGISTICS CENTER

216,250 SF
Available For Lease

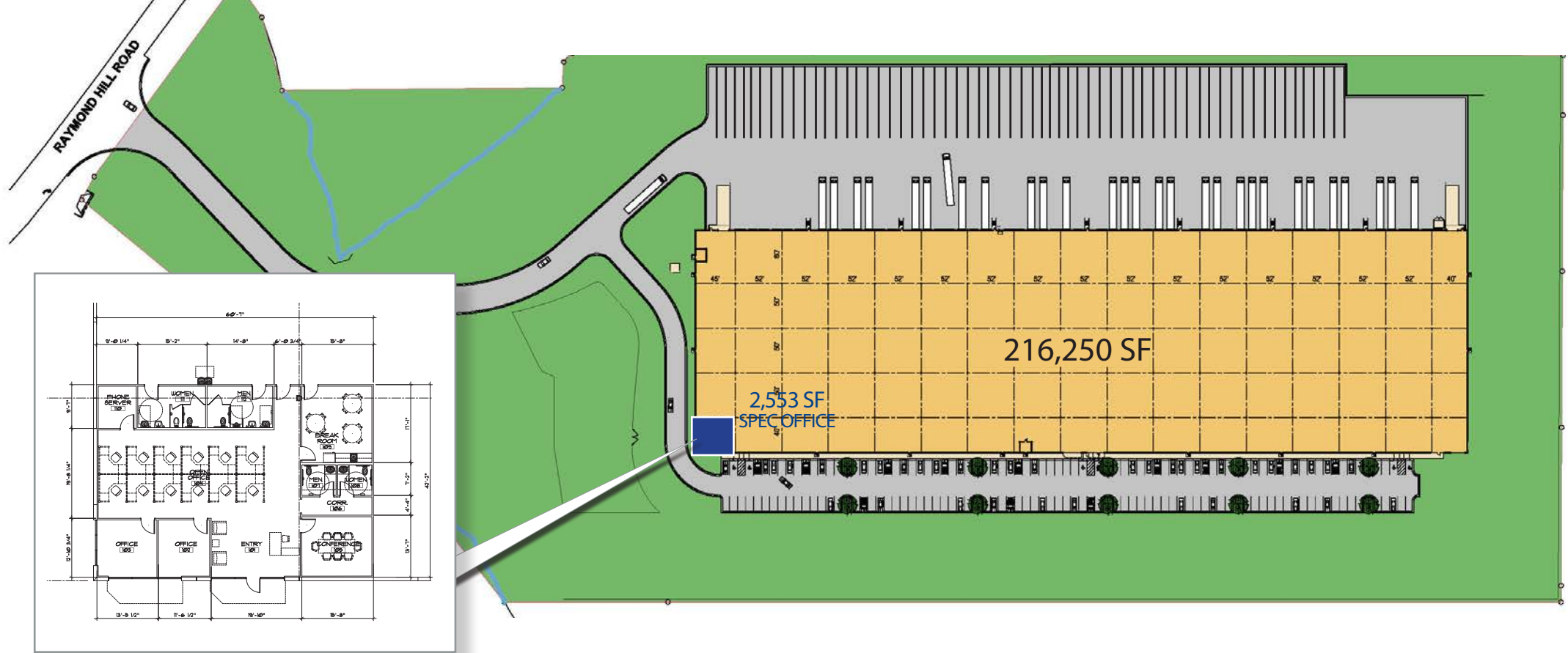
95 Raymond Hill Road, Newnan, GA 30265

SCOTT PLOMGREN | +1 404 372 2151
splogmren@broadpoint-partners.com

HARRISON MARSTELLER | +1 404 877 9219
harrison.marsteller@colliers.com



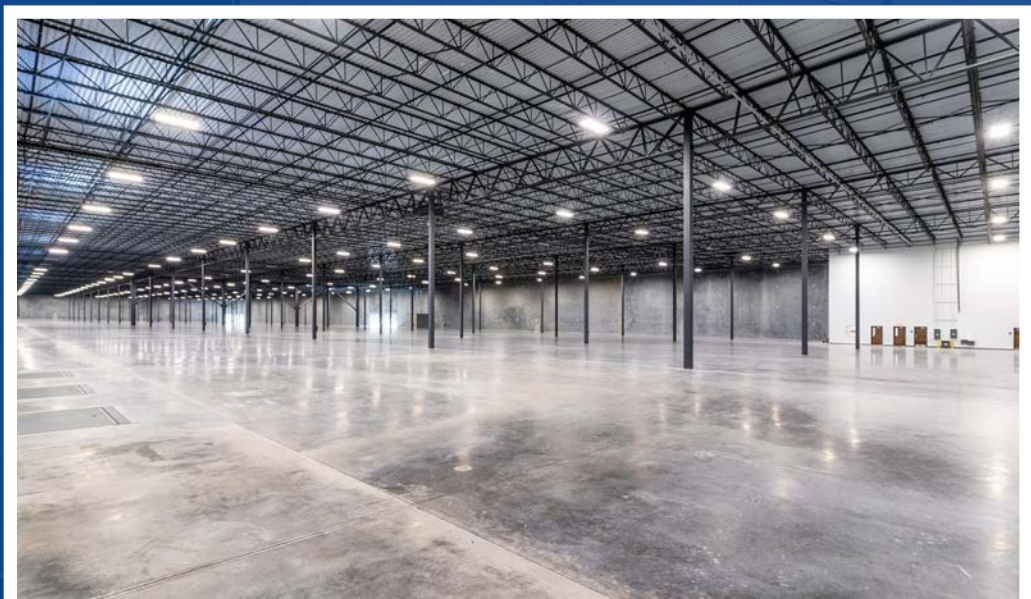
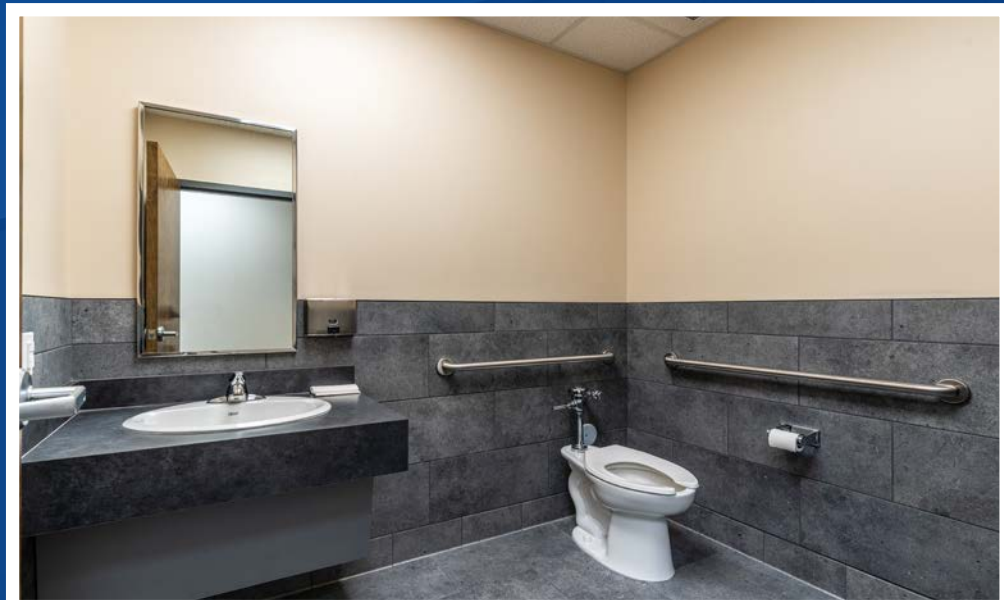
 www.85SouthLC.com



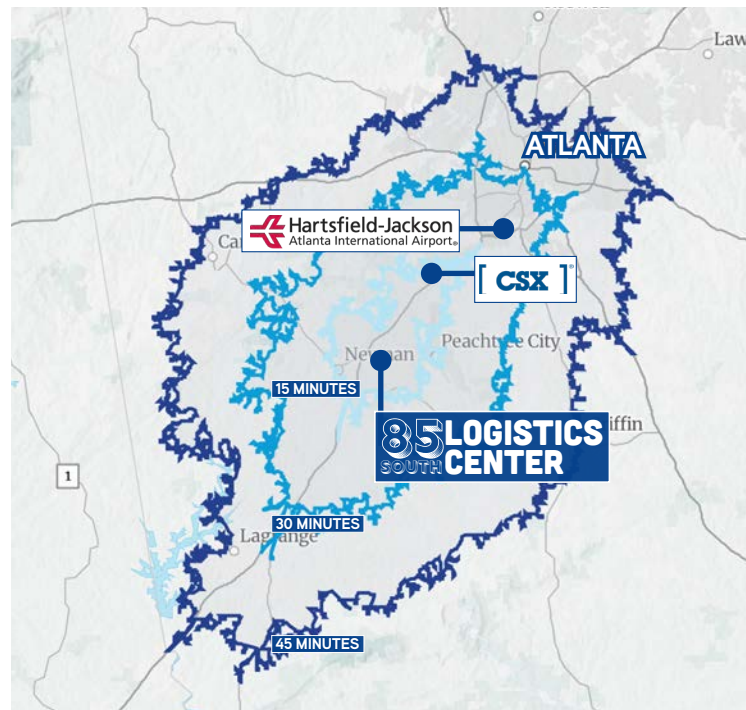
Building Specifications

Total Building SF	216,250	Levelers	(6) 40,000 lb mechanical levelers
Site Area	20.12 Acres	Trailer Parks	61
Building Dimensions	250' x 865'	Auto Parks	157
Spec Office SF	2,553 SF	Electrical	1800 Amp 277/480V
Clear Height	32'	Sprinkler	ESFR
Column Spacing	52' x 50' (60' staging bays)	Lighting	LED (with motion sensors)
Truck Court Depth	150' - 185'	Configuration	Rear Load
Loading	54 - (9' x 10') DH 2 - (12' x 14') DI		

SPEC IMPROVEMENTS



85 LOGISTICS SOUTH CENTER



Points of Interest

CSX Intermodal (Fairburn)	13.3 Miles
Hartsfield-Jackson Int'l. Airport	21.5 Miles
Downtown Atlanta	32.5 Miles

Interstates

Interstate 85 (Exit 51)	0.4 Mile
Interstate 285	18.5 Miles
Interstate 20	29.7 Miles

Ports

Port of Savannah	264 Miles
Port of Brunswick	327 Miles
Port of Charleston	331 Miles

85 SOUTH LOGISTICS CENTER

CONTACTS

SCOTT PLOMGREN | +1 404 372 2151
splomgren@broadpoint-partners.com

HARRISON MARSTELLER | +1 404 877 9219
harrison.marsteller@colliers.com



716,076
2024 TOTAL POPULATION



364,774
2024 POPULATION IN
LABOR FORCE

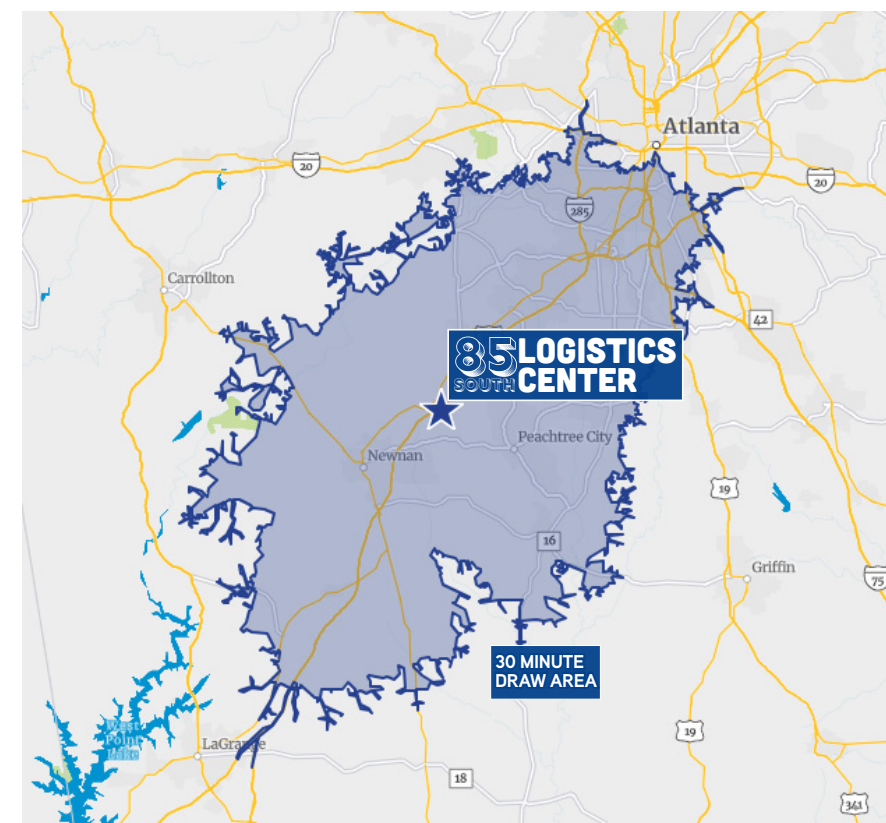


\$20.32/HR
MEDIAN WAREHOUSE WORKERS
HOURLY WAGE



47,961
2024 TOTAL JOBS IN
TRANSPORTATION/WAREHOUSING

85 South Logistics Center has access to a workforce of over 362,229 within a 30 minute drive-time.



*Sources: eSite, Emsi



This document has been prepared by Colliers for advertising and general information only. Colliers makes no guarantees, representations or warranties of any kind, expressed or implied, regarding, including, but not limited to, warranties of content, accuracy and reliability. Any interested party should undertake their own inquiries as to the accuracy of the information. Colliers excludes any inferred or implied terms, conditions and warranties arising out of this document and excludes all liability for loss and damages arising therefrom. This publication is the copyrighted property of the licensor(s). Copyright © 2023. All rights reserved. This communication is not intended to cause or induce breach of an existing listing agreement. Industrial Services Group, Atlanta