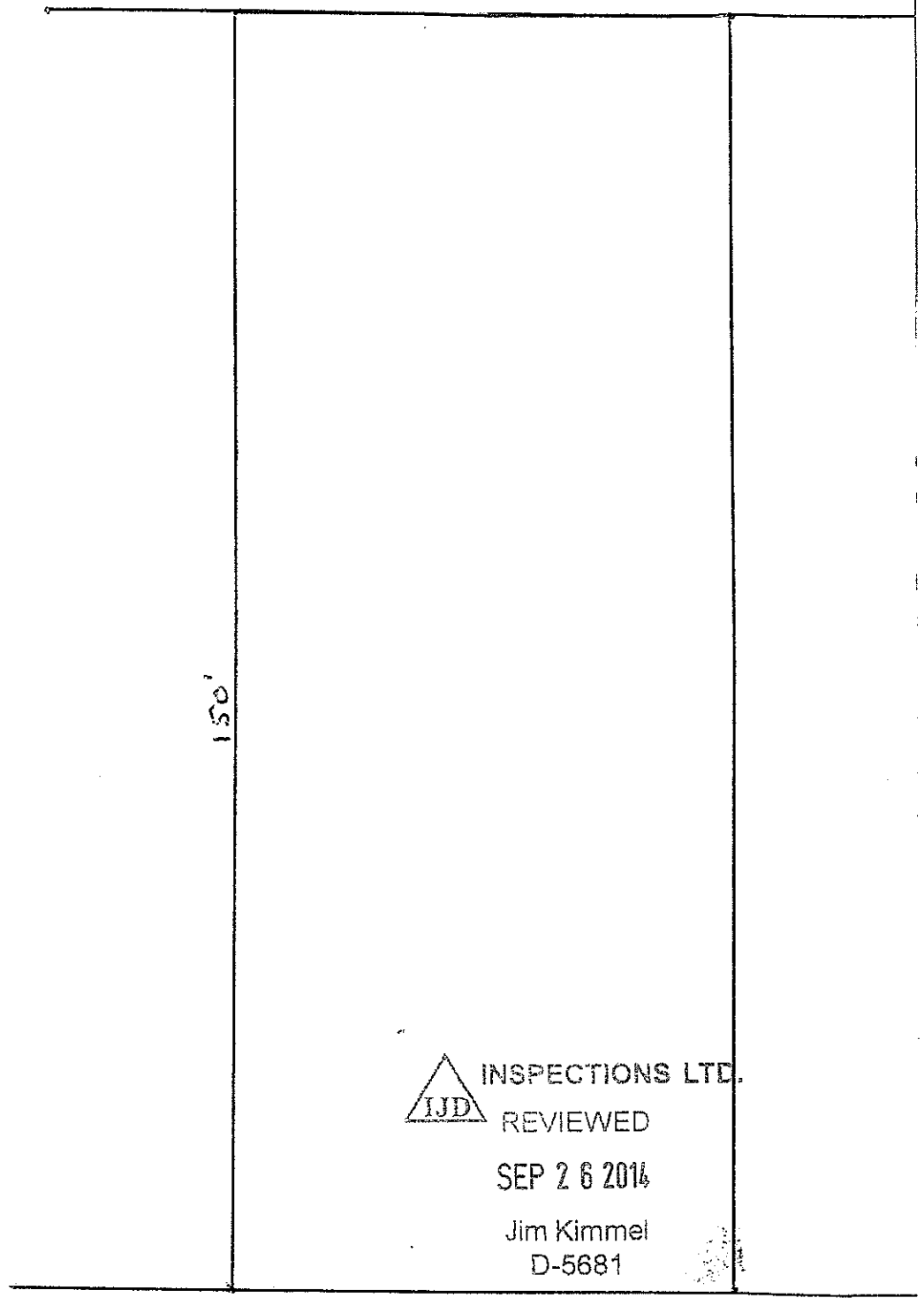


Building location
on lot



BACK

ALLEY



54 Ave

60'



INSPECTIONS LTD.

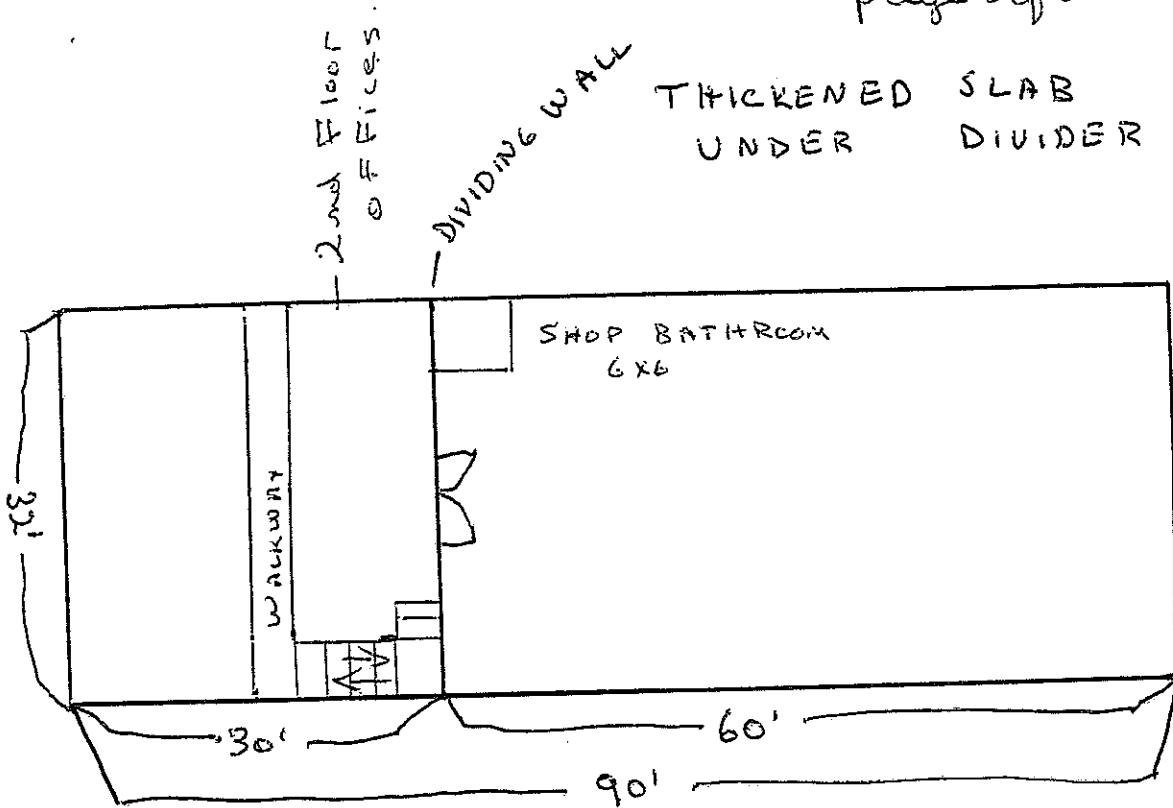
REVIEWED

SEP 26 2014

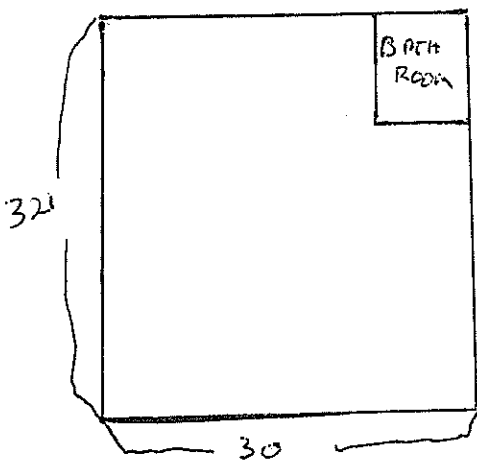
Jim Kimmel

D-5681

THICKENED SLAB
UNDER DIVIDER WALL



UPSTAIRS OFFICE TO HAVE THICKENED.
PADS FOR TELE POSTS.



INSPECTIONS LTD.

REVIEWED

SEP 26 2014

Jim Kimmel

D-5681

BATH ROOM FOR OFFICES + OPEN FRONT AREA.
TO BE ~~REMOVED~~ LARGE ENOUGH TO MEET
HANDICAPPED REGULATIONS.

FRONT VIEW

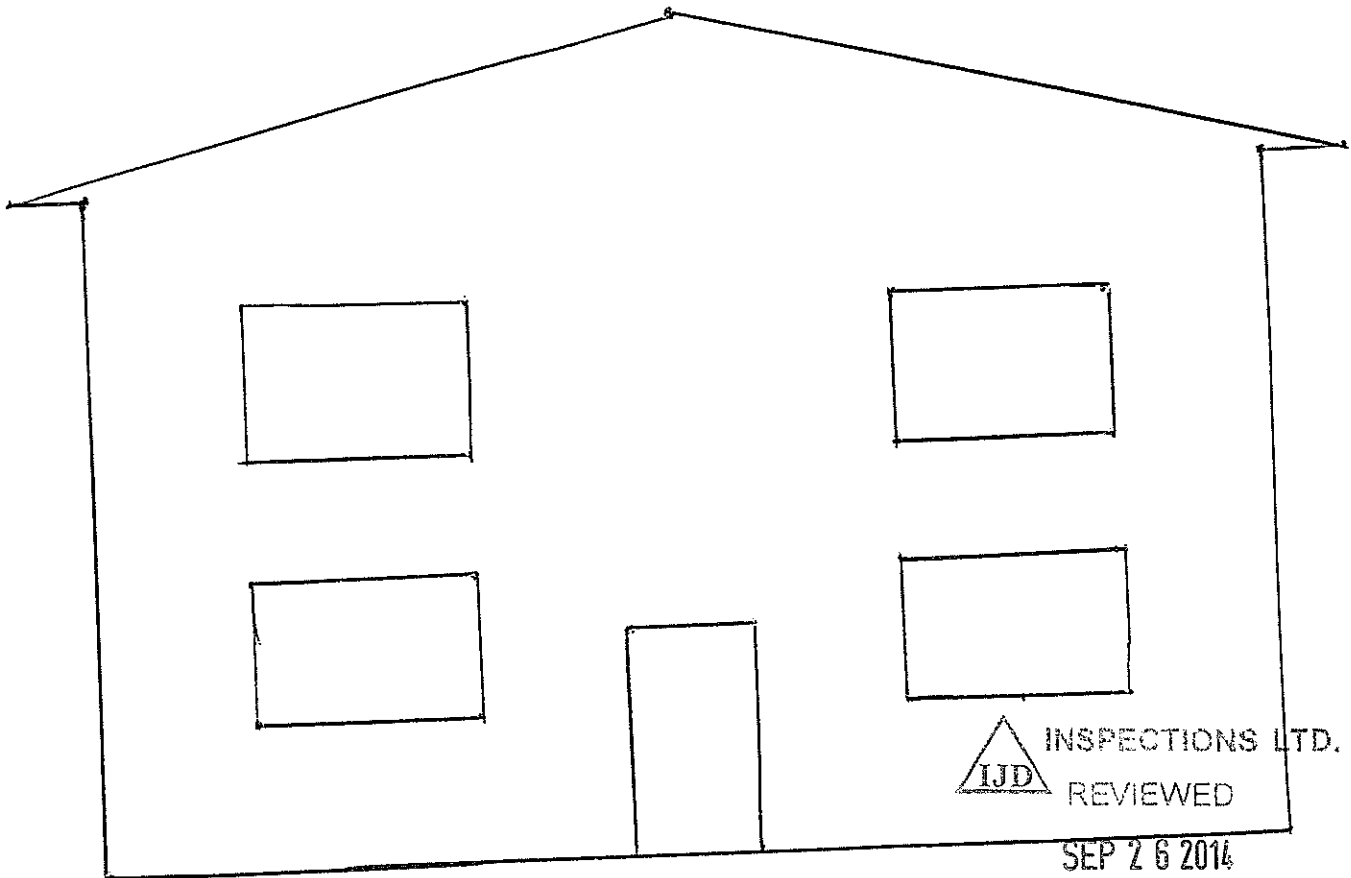
Width - 32'

Height - 18' from grade to top of wall.

3/12 Pitch rafters with 2' eaves.

1 - 3' x 6' door

4 - 4' x 6' windows



INSPECTIONS LTD.

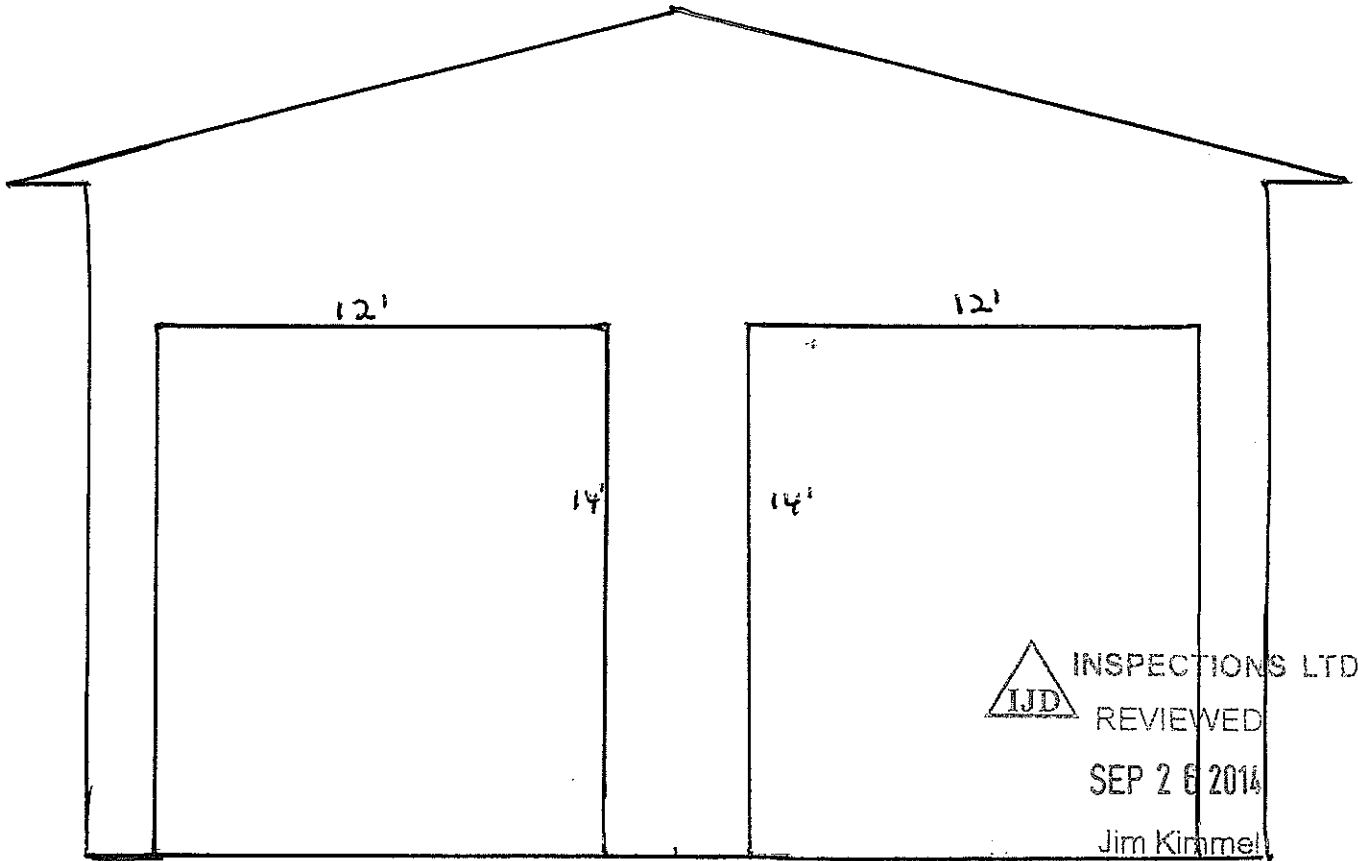
REVIEWED

SEP 26 2014

Jim Kimmel
D 5284

REAR VIEW

Width - 32 ft
Height - 18 ft walls
2 - 12x14 Roll up doors



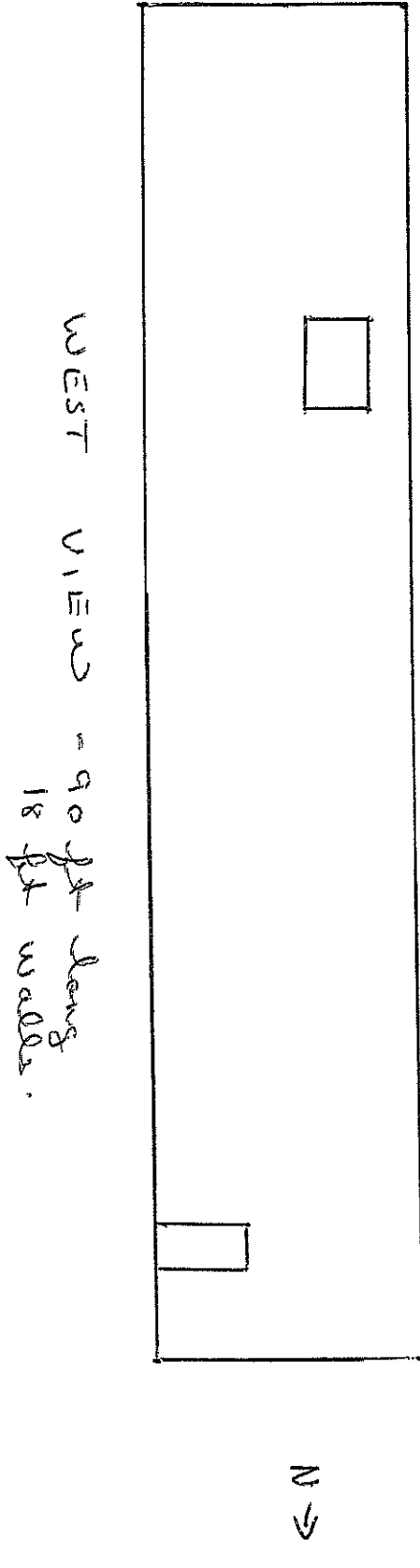
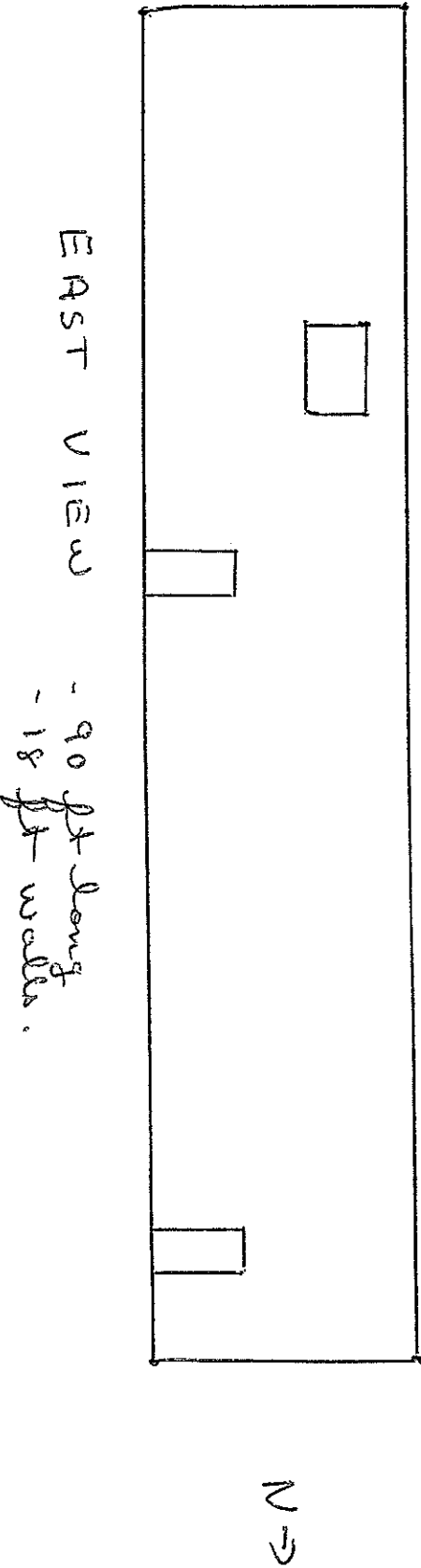
INSPECTIONS LTD.


REVIEWED

SEP 26 2014

Jim Kimmel

D-5681



 INSPECTIONS LTD.
REVIEWED
SEP 26 2014
Jim Kimmel
D 5681

DETAIL

FOR

OFFICE

HEATING

7 of 8

WALL

FOAM
BLK
WALL

FINISHED FLOOR

DUCT TO BE
WRAPPED WITH
PLASTIC - ALL
JOINTS IN PLASTIC
TYVEK TAPE

DUCT

1 1/2" ~~STYRO~~ STYROFOAM INSULATION
FROM FOAM BLOCK WALL TO RUN
CONTINUOUS UNDER OFFICE SLI

undisturbed clay
or compacted fill

Not less than 3" concrete around
heating duct

DUCT TO GO AROUND
PERIMETER OF OFFICE



INSPECTIONS LTD.

REVIEWED

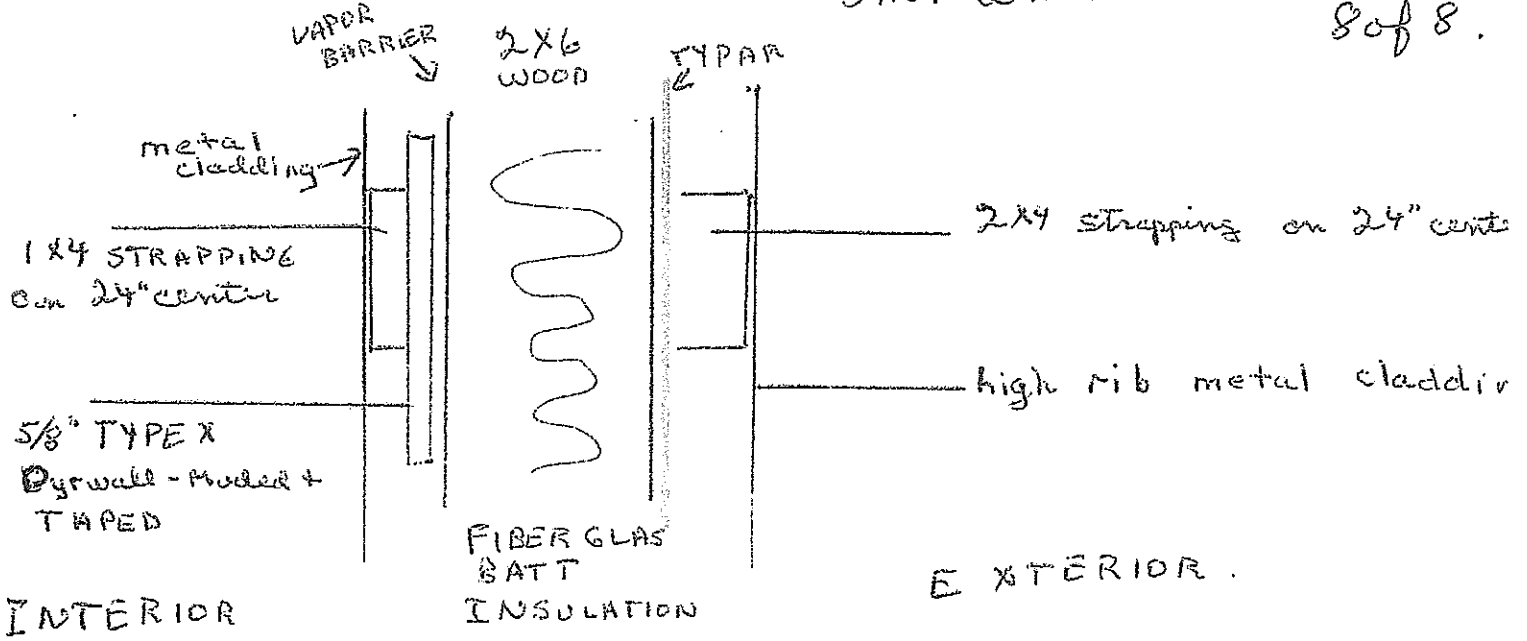
SEP 26 2014

Jim Kimmel

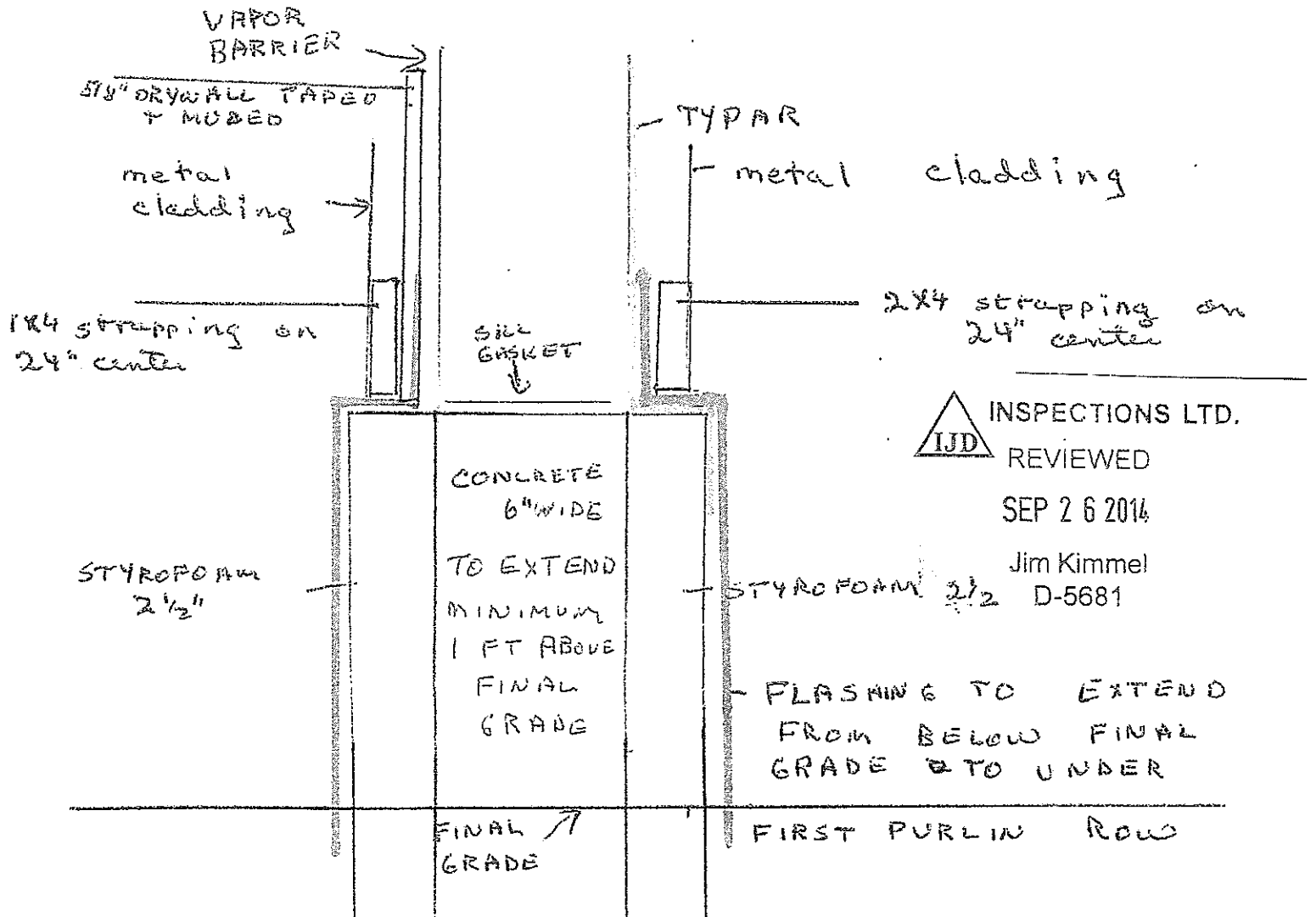
75024

① WALL DETAIL - FOR EAST & WEST SHOP WALL

8 of 8.



② TRANSITION FROM FOAM BLOCK WALL TO WOOD STUD WALL



INSPECTIONS LTD.
 IJD REVIEWED
 SEP 26 2014
 Jim Kimmel
 D-5681

FOOTING &
GRADE BEAM
DETAIL

WALL

FOAM BLOCK
CONSTRUCTION

↓
Minimum
48" Fill FROM
BOTTOM OF FOOTING
TO GRADE

2 1/2"
STYROFOAM

2 1/2"
~~STYROFOAM~~
STYROFOAM

6" Concrete
rebar installed to
manufacturer spec.

Concrete



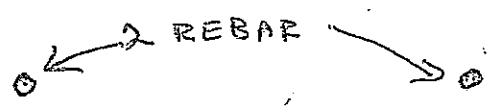
INSPECTIONS LTD.

REVIEWED

SEP 28 2016

Jim Kimmel

D-5681



~~22"~~ 22"

Undisturbed clay or compacted fill