



FOR LEASE



WOODLAND INDUSTRIAL FLEX BUILDING

600 Mitchell Ave Woodland, WA 98674

\$18 - \$20 psf + NNN

807 SF - 17,587 SF Max Contiguous

- 37,126 SF Total
- Flexible Sizes
- Office Build Out Options
- Delivery Q2 2024

CHRIS ROEWE

Woodford CRE Broker / Partner

360-556-5101 | chrisroewe@hotmail.com



NICHOLAS G. DIAMOND

Principal Broker | Licensed in OR & WA

503-222-2655 | ndiamond@capacitycommercial.com



PROPERTY SUMMARY



FOR
LEASE



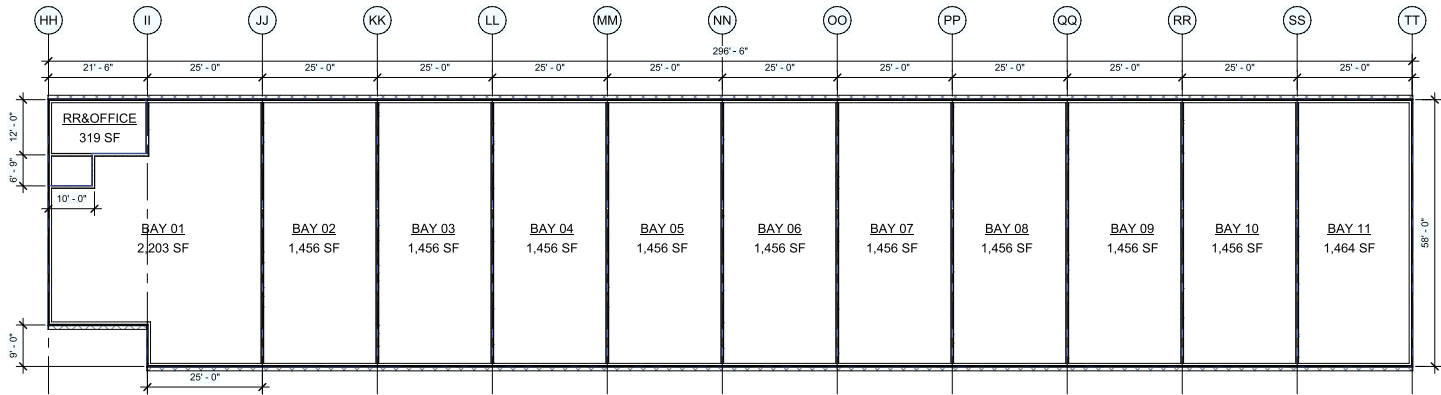
Property Details	
Address	600 Mitchell Ave Woodland, WA 98674
Available Space	807 - 17,587 SF
Lease Rate	\$18 - \$20 psf + NNN
Availability	Quarter 2 2024

Plan Type	# of Units	Sq. Ft. Per Unit Sq.	Sq. Ft. Total
24' X 60'	22	1,535	33,762
Bay 19	1	807	807
Bay 20	1	1,456	1,456
Bay 25	1	1,101	1,101
Parking Stalls	55		
Totals	25		37,126



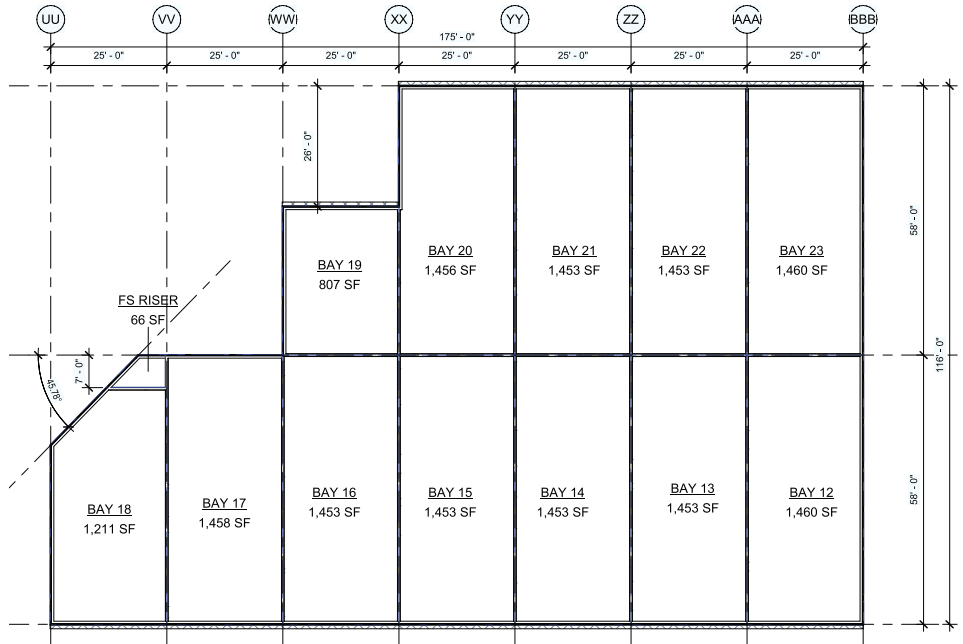
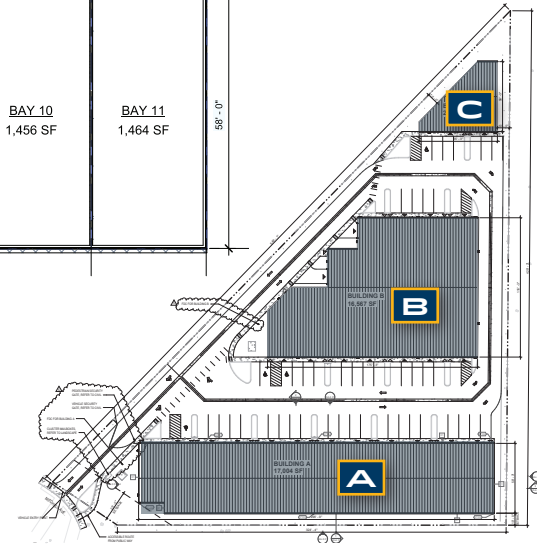


FLOOR PLANS



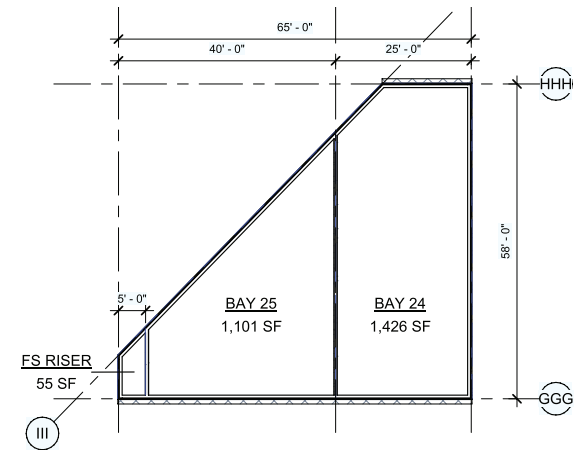
BUILDING A

1,456 - 17,587 SF



BUILDING B

807 - 16,889 SF

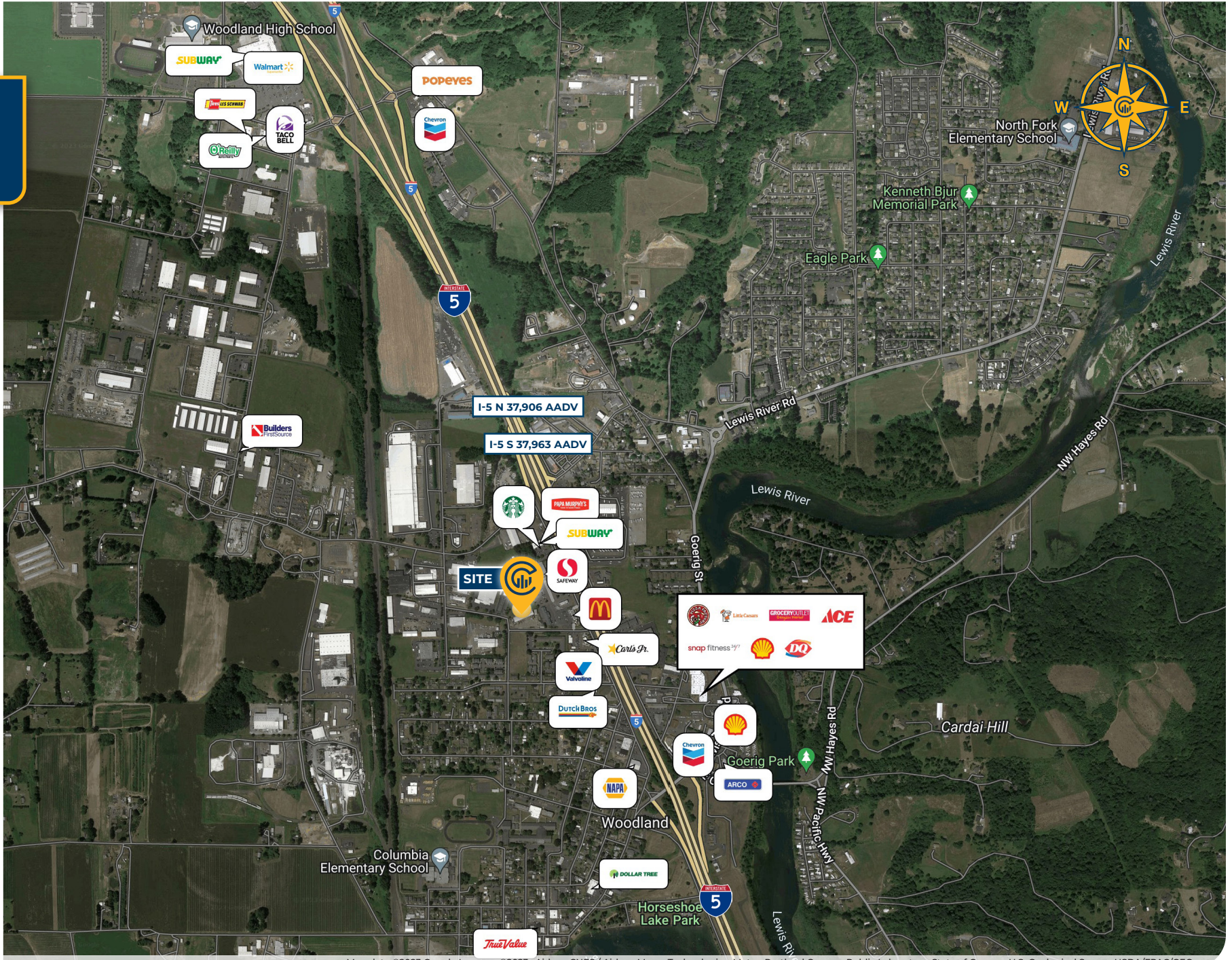


BUILDING C

1,101 - 2,650 SF



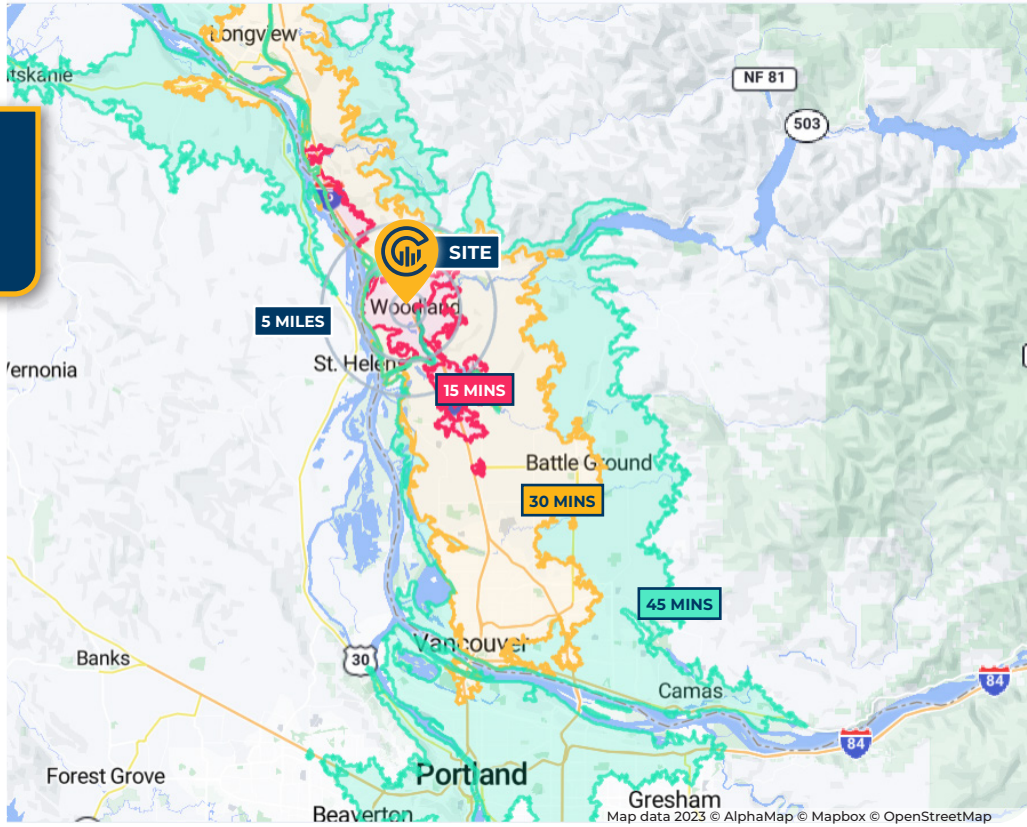
LOCAL AERIAL MAP



Map data ©2023 Google Imagery ©2023, Airbus, CNES / Airbus, Maxar Technologies, Metro, Portland Oregon, Public Laboratory, State of Oregon, U.S. Geological Survey, USDA/FPAC/GEO



**DRIVE TIMES
& DEMOGRAPHICS**



AREA DEMOGRAPHICS			
Population	1 Mile	3 Mile	5 Mile
2024 Estimated Population	4,185	10,450	26,508
2029 Projected Population	4,338	10,797	27,411
2020 Census Population	3,963	10,285	25,819
2010 Census Population	3,169	8,614	22,683
Projected Annual Growth 2024 to 2029	0.7%	0.7%	0.7%
Historical Annual Growth 2010 to 2024	2.3%	1.5%	1.2%
Households & Income			
2024 Estimated Households	1,491	3,647	9,923
2024 Est. Average HH Income	\$102,545	\$127,887	\$119,538
2024 Est. Median HH Income	\$89,172	\$103,714	\$95,702
2024 Est. Per Capita Income	\$36,657	\$44,927	\$44,916
Businesses			
2024 Est. Total Businesses	323	504	1,020
2024 Est. Total Employees	3,310	4,848	9,283

Demographic Information, Traffic Counts, and Merchant Locations are Provided by REGIS Online at SitesUSA.com ©2024, Sites USA, Chandler, Arizona, 480-491-1112 Demographic Source: Applied Geographic Solutions 5/2024, TIGER Geography - RS1

CHRIS ROEWE
 Woodford CRE Broker / Partner
 360-556-5101 | chrisroewe@hotmail.com



NICHOLAS G. DIAMOND
 Principal Broker | Licensed in OR & WA
 503-222-2655 | ndiamond@capacitycommercial.com

WOODLAND WAREHOUSE