

Immediately Available



# Sublease

**65,784 sf, Divisible by floor, 32,392 sf**

- Term through 10/31/2027
- Immediate occupancy
- Furniture available
- Spectacular views

One Pierce Place  
Itasca, IL 60143

**STEVE STRATTON**  
International Director  
312 228 3933  
[steve.stratton@am.jll.com](mailto:steve.stratton@am.jll.com)

**TODD SCHAEFER**  
Executive Vice President  
312 228 3676  
[todd.schaefer@am.jll.com](mailto:todd.schaefer@am.jll.com)

**DOUG SHEHAN**  
Executive Vice President  
773 458 1382  
[doug.shehan@am.jll.com](mailto:doug.shehan@am.jll.com)



Sublease | Immediately Available

One Pierce Place  
Itasca, IL 60143

## Property features



Café



Fitness center



Conference room



Covered parking

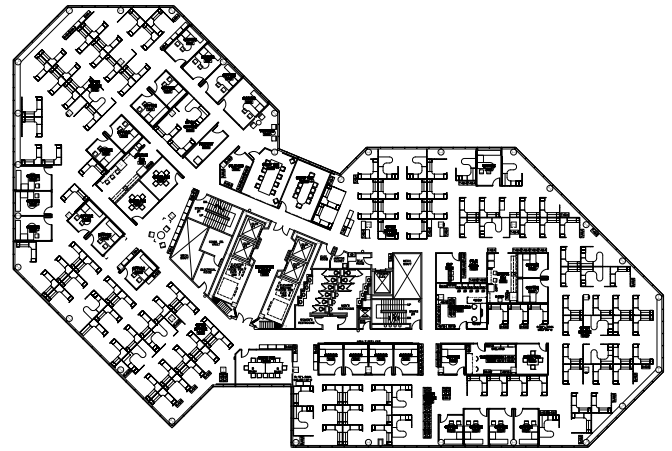
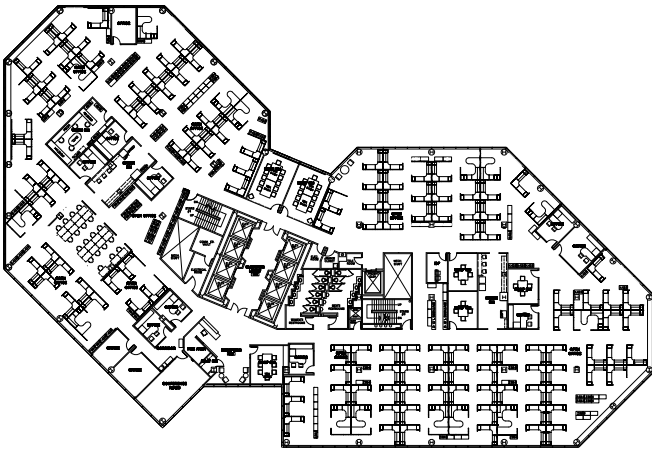
## Site features

### 9th Floor

- 1 reception
- 7 conference rooms
- 2 break rooms
- 12 private offices
- 141 workstations
- 19 benching seats

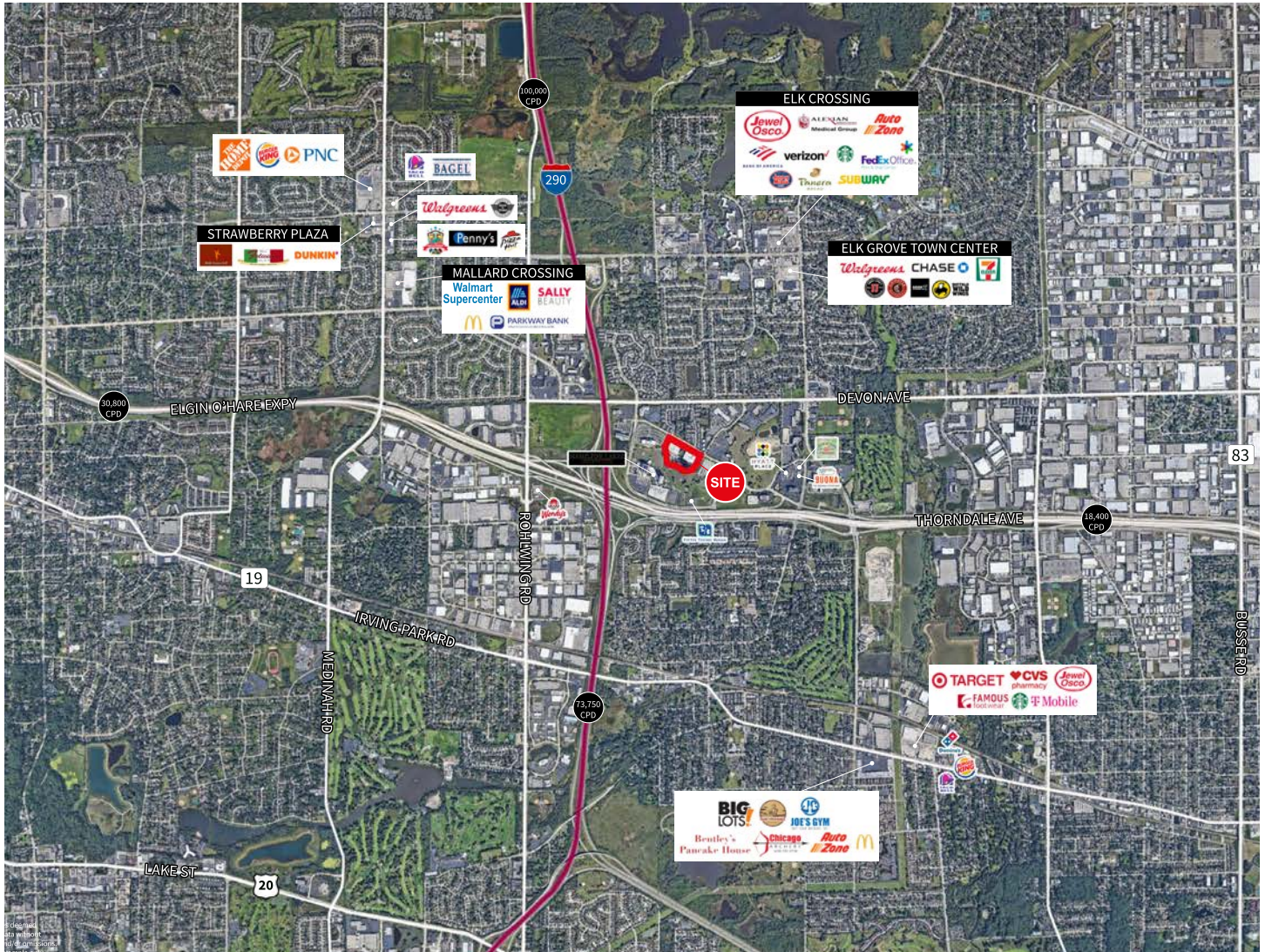
### 10th Floor

- 4 conference rooms
- 2 break rooms
- 26 private offices
- 128 workstations
- 2 file rooms
- 1 workroom



### Location features

- Ideal consolidation location
- Easy highway access – I 355, I 290, I 90
- Abundant surrounding amenities



**STEVE STRATTON**  
International Director  
312 228 3933  
steve.stratton@am.jll.com

**TODD SCHAEFER**  
Executive Vice President  
312 228 3676  
todd.schaefer@am.jll.com

**DOUG SHEHAN**  
Executive Vice President  
773 458 1382  
doug.shehan@am.jll.com

DISCLAIMER: Although information has been obtained from sources deemed reliable, Owner, Jones Lang LaSalle, and/or their representatives, brokers or agents make no guarantees as to the accuracy of the information contained herein, and offer the Property without express or implied warranties of any kind. The Property may be withdrawn without notice. If the recipient of this information has signed a confidentiality agreement regarding this matter, this information is subject to the terms of that agreement.  
©2020. Jones Lang LaSalle. All rights reserved.