

169 STILLMAN STREET

FOR LEASE | GROUND FLOOR FLEX SPACE W/ DRIVE-IN ROLL UP DOOR

TCP
TOUCHSTONE
COMMERCIAL PARTNERS



WWW.TCPRE.COM

ZACH HAUPERT zhaupert@tcpre.com
D 415.539.1121 | C 415.812.1219

MICHAEL SANBERG msanberg@tcpre.com
D 415.539.1103 | C 415.697.6088

169 STILLMAN STREET

PROPERTY SUMMARY

ADDRESS

169 Stillman Street, San Francisco, CA 94107

AVAILABLE SPACE

Ground Floor: +/- 2,945 Square Feet

RENTAL RATE

\$27 / Square Foot / Year, Industrial Gross

AVAILABLE

Immediately

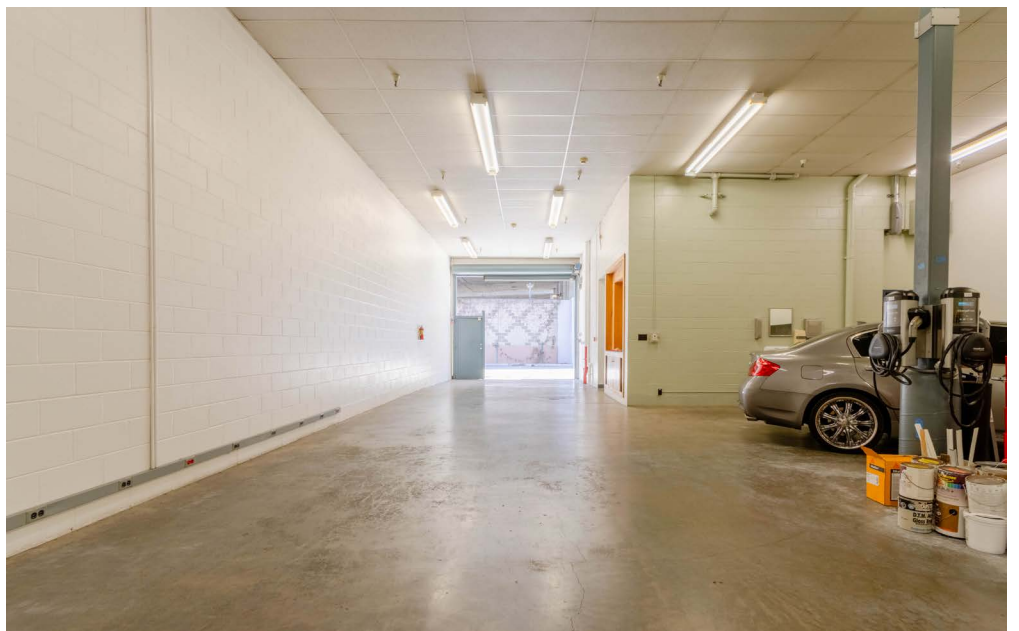
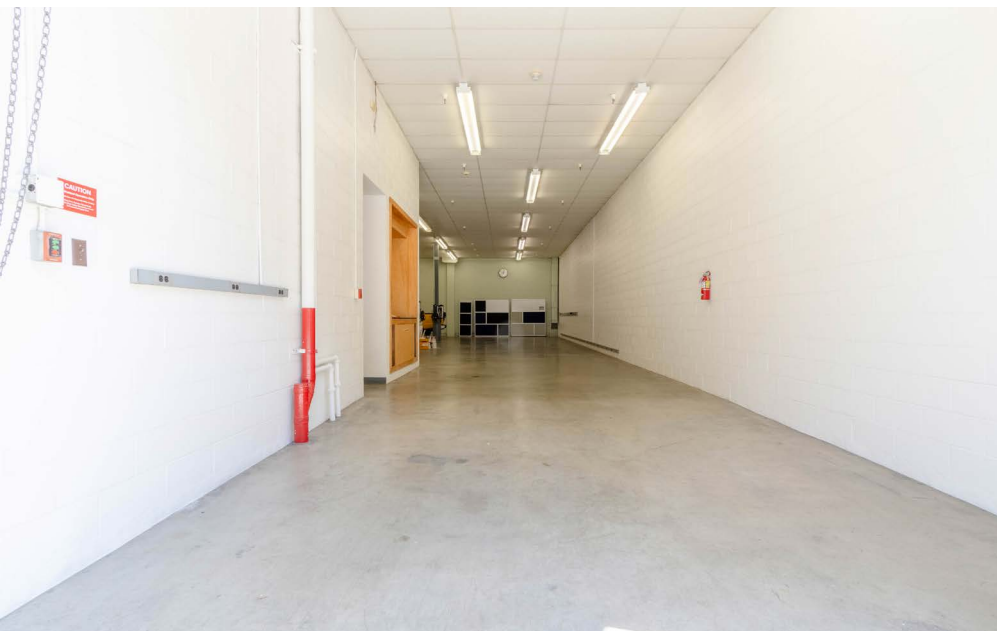
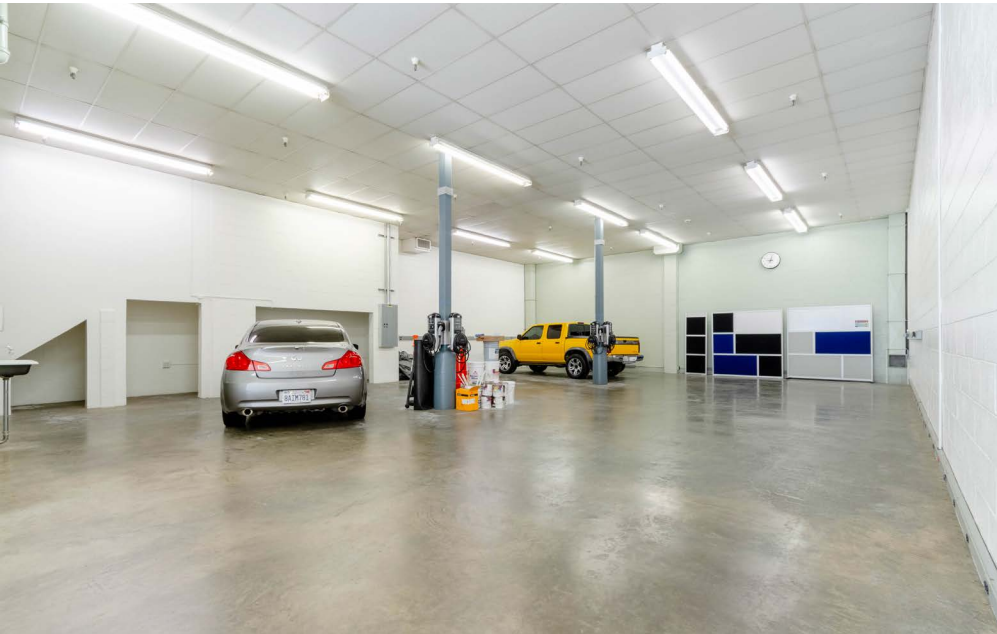


BUILDING ATTRIBUTES

- + Move-In Ready Ground Floor Flex / Retail Space
- + One (1) Small Office
- + Sealed Concrete Floors
- + Full HVAC, One (1) Restroom
- + Electric Car Chargers Distributed Throughout
- + Automatic Roll-Up Door
- + Fiber Service Available
- + Close to CalTrain, South Park, & Moscone Center



169 STILLMAN STREET

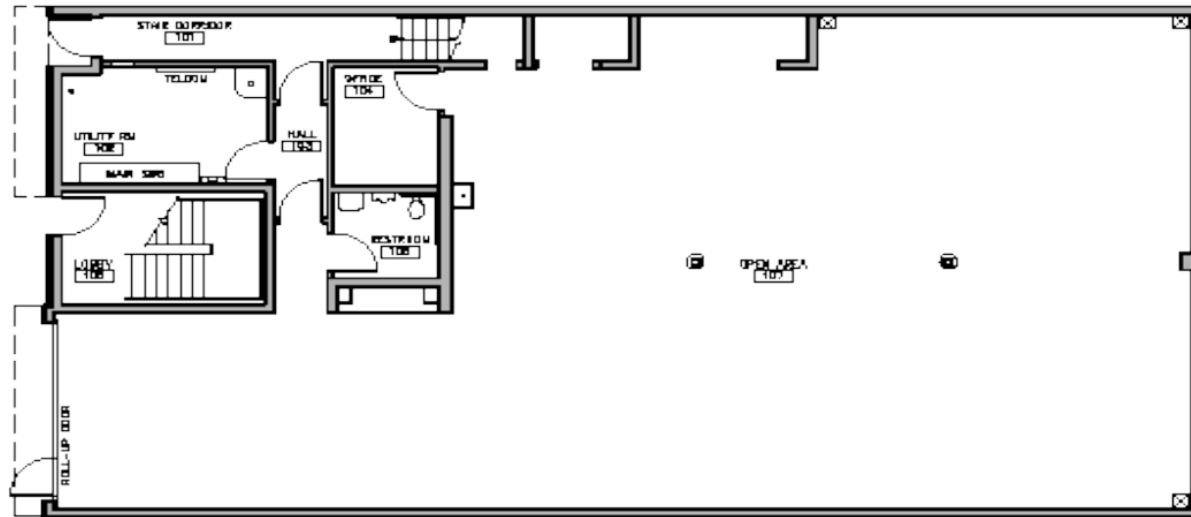


169 STILLMAN STREET

Floor Plans

Ground Floor

+/- 2,945 Square Feet



169 STILLMAN STREET

LOCATION OVERVIEW

Desirable South of Market location, walkable to nearby amenities and to surrounding neighborhoods.



08 MIN to 4th St. Caltrain
13 MIN to 2nd & King Muni
19 MIN to Powell St. Bart



04 MIN to Union Square
06 MIN to Financial District
08 MIN to Mission Bay



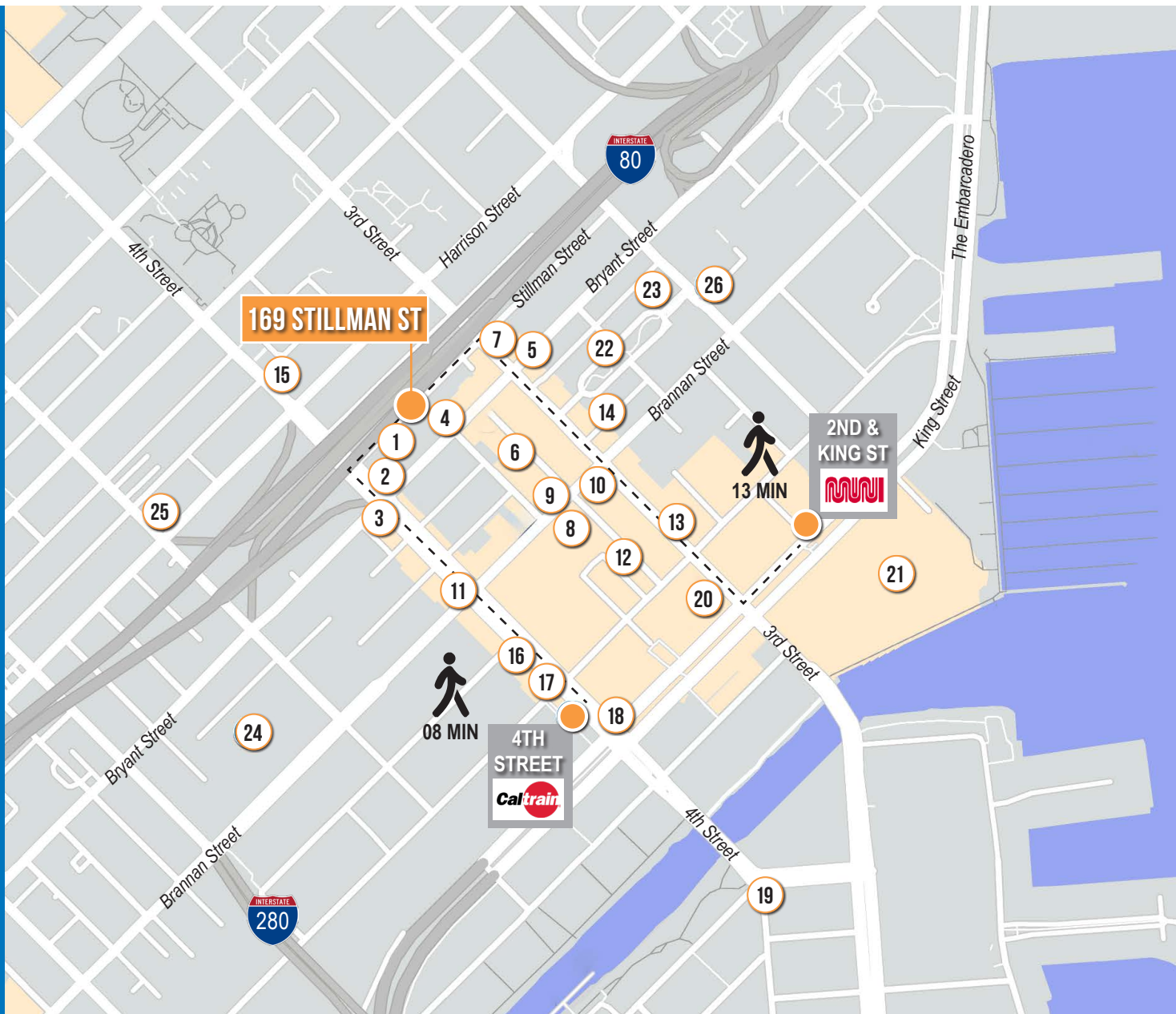
02 MIN to 80 On-Ramp
04 MIN to 280 On-Ramp
05 MIN to 101 On-Ramp



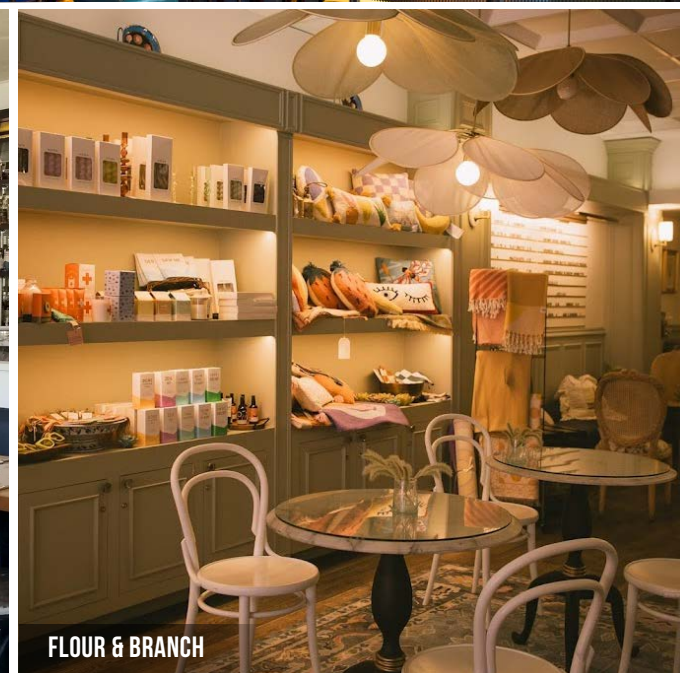
169 STILLMAN STREET

NEARBY AMENITIES

- 1..... The Sarap Shop
- 2..... Shell Gas Station
- 3..... The Hotel Utah Saloon
- 4..... Black Hammer Brewing
- 5..... Flour & Branch
- 6..... Wabi-Sabi
- 7..... Garaje
- 8..... Sun and Moon
- 9..... Brickhouse
- 10..... Local Tap
- 11..... Marlowe
- 12..... Little Skillet
- 13..... Alchemist Bar & Lounge
- 14..... Golden Goat Coffee
- 15..... Whole Foods Market
- 16..... The UPS Store
- 17..... Walgreens
- 18..... Safeway
- 19..... Gus's Community Market
- 20..... Lucky Strike SF
- 21..... Oracle Park
- 22..... Caffè Centro
- 23..... ROOH SF
- 24..... SF Flower Mart
- 25..... All Star Donuts
- 26..... Movida



169 STILLMAN STREET



169 STILLMAN STREET



Corp. Lic. 01112906
www.tcpre.com

ZACH HAUPERT

D 415.539.1121 C 415.812.1219
zhaupert@tcpre.com DRE # 01822907

MICHAEL SANBERG

D 415.539.1103 C 415.697.6088
msanberg@tcpre.com DRE # 01930041

This document has been prepared by Touchstone Commercial Partners for advertising and general information only. Touchstone Commercial Partners makes no guarantees, representations or warranties of any kind, expressed or implied, regarding the information including, but not limited to, warranties of content, accuracy and reliability. Any interested party should undertake their own inquiries as to the accuracy of the information. Touchstone Commercial Partners excludes unequivocally all inferred or implied terms, conditions and warranties arising out of this document and excludes all liability for loss and damages arising there from. This publication is the copyrighted property of Touchstone Commercial Partners and/or its licensor(s). ©2025. All rights reserved.