

SUMMARY

AERIAL

INTERIOR PHOTOS

SURVEY & FLOOR PLAN

DEMOGRAPHICS

FOR LEASE

PROPERTY OVERVIEW

This ±1,047 SF medical office suite is ideally positioned along Lapalco Boulevard in Harvey, Louisiana, a high-traffic commercial corridor serving the West Bank and greater New Orleans market. Formerly home to an ENT clinic, the space is thoughtfully configured for specialty medical and dental-adjacent practices.

The suite offers a highly functional layout featuring a reception and waiting area, multiple exam rooms, a nurses' station, private restroom, and an executive office. Two separate entry doorways provide efficient patient circulation and operational flexibility.

The building is anchored by Complete Family Dental, creating a strong healthcare presence and steady daily activity. The space is particularly well-suited for oral surgery, orthodontics, ENT, medical imaging, sleep medicine, pediatric therapy, or other complementary specialty practices.

With shared on-site parking, excellent visibility, and easy access to surrounding neighborhoods including Gretna, Marrero, and Westwego, this location benefits from strong daily traffic counts, dense residential demographics, and a proven medical services corridor.

PROPERTY DETAILS

- Available SF – 1,047 SF
- Site Size – 0.26 acres
- Zoning – MUCD
- Flood Zone – AE
- Parking – +/- 25 spaces

LEASE RATE

- 18.00 PSF + NNN
- Estimated NNN - \$3 PSF





BRADLEY COOK, CCIM
Office: 985-898-2022
Direct: 985-246-3720
bcook@stirlingprop.com

DANIEL COOK
Office: 985-898-2022
Direct: 985-246-3795
dcook@stirlingprop.com

CARLY PLOTKIN
Office: 504-523-4481
Direct: 504-620-8120
cplotkin@stirlingprop.com

LAPALCO MEDICAL OFFICE

1705 LAPALCO BLVD, HARVEY, LA 70058

SUMMARY

AERIAL

INTERIOR PHOTOS

SURVEY & FLOOR PLAN

DEMOGRAPHICS





BRADLEY COOK, CCIM
Office: 985-898-2022
Direct: 985-246-3720
bcook@stirlingprop.com

DANIEL COOK
Office: 985-898-2022
Direct: 985-246-3795
dcook@stirlingprop.com

CARLY PLOTKIN
Office: 504-523-4481
Direct: 504-620-8120
cplotkin@stirlingprop.com

LAPALCO MEDICAL OFFICE
1705 LAPALCO BLVD, HARVEY, LA 70058

SUMMARY

AERIAL

INTERIOR PHOTOS

SURVEY & FLOOR PLAN

DEMOGRAPHICS



SUMMARY

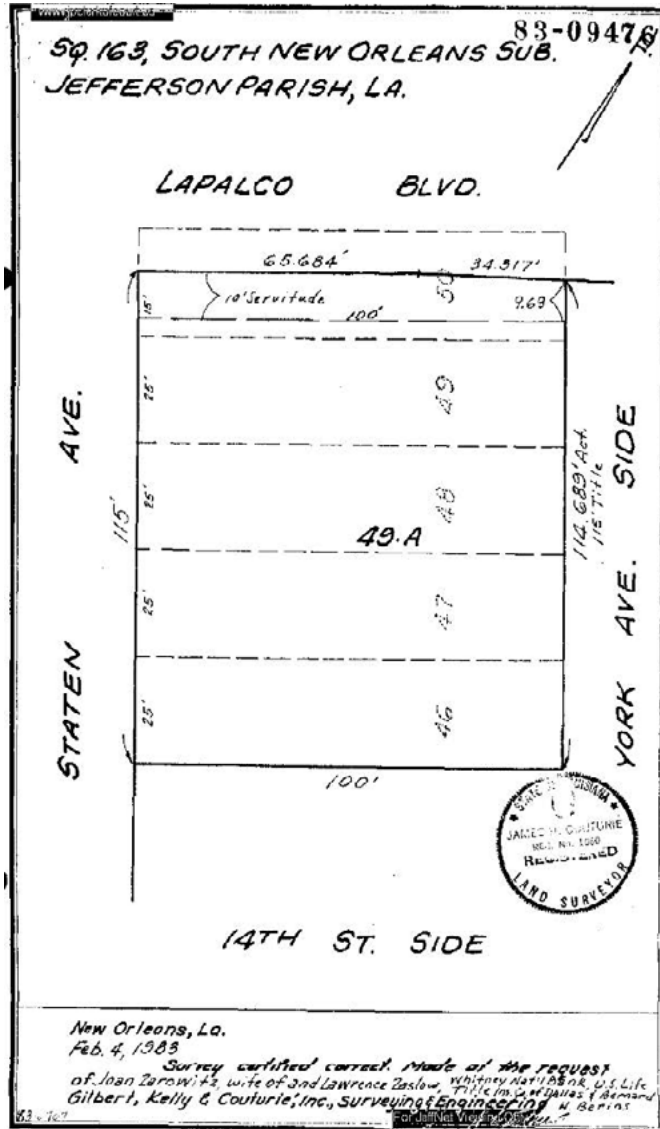
AERIAL

INTERIOR PHOTOS

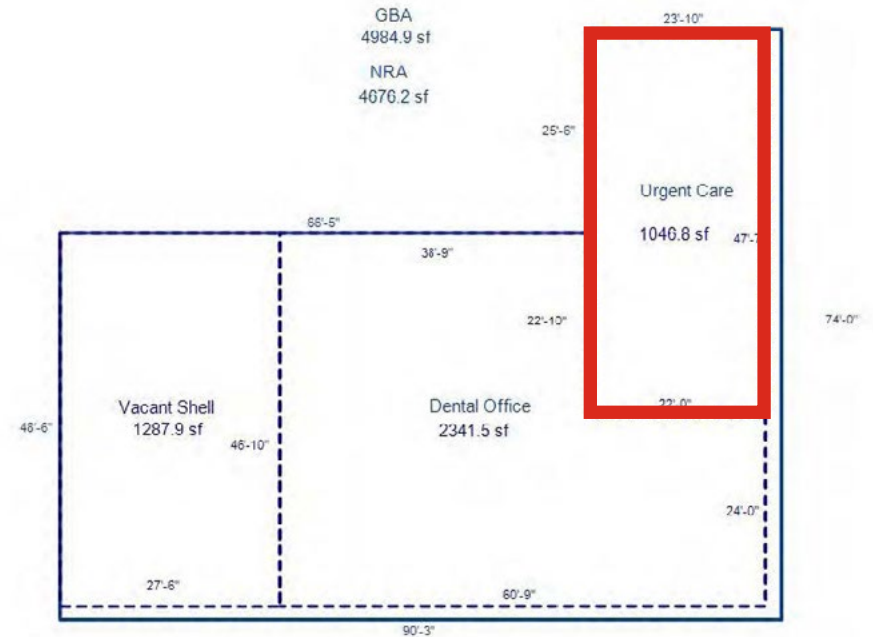
SURVEY & FLOOR PLAN

DEMOGRAPHICS

SURVEY



FLOOR PLAN





BRADLEY COOK, CCIM
Office: 985-898-2022
Direct: 985-246-3720
bcook@stirlingprop.com

DANIEL COOK
Office: 985-898-2022
Direct: 985-246-3795
dcook@stirlingprop.com

CARLY PLOTKIN
Office: 504-523-4481
Direct: 504-620-8120
cplotkin@stirlingprop.com

LAPALCO MEDICAL OFFICE
1705 LAPALCO BLVD, HARVEY, LA 70058

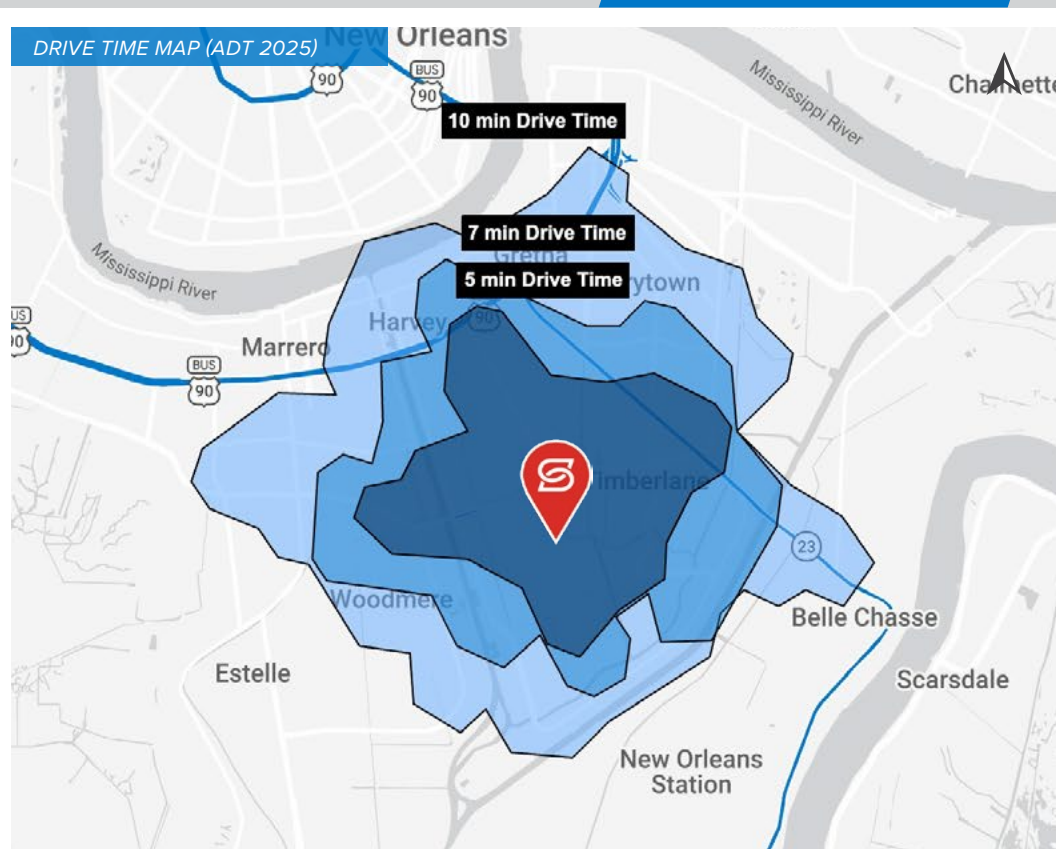
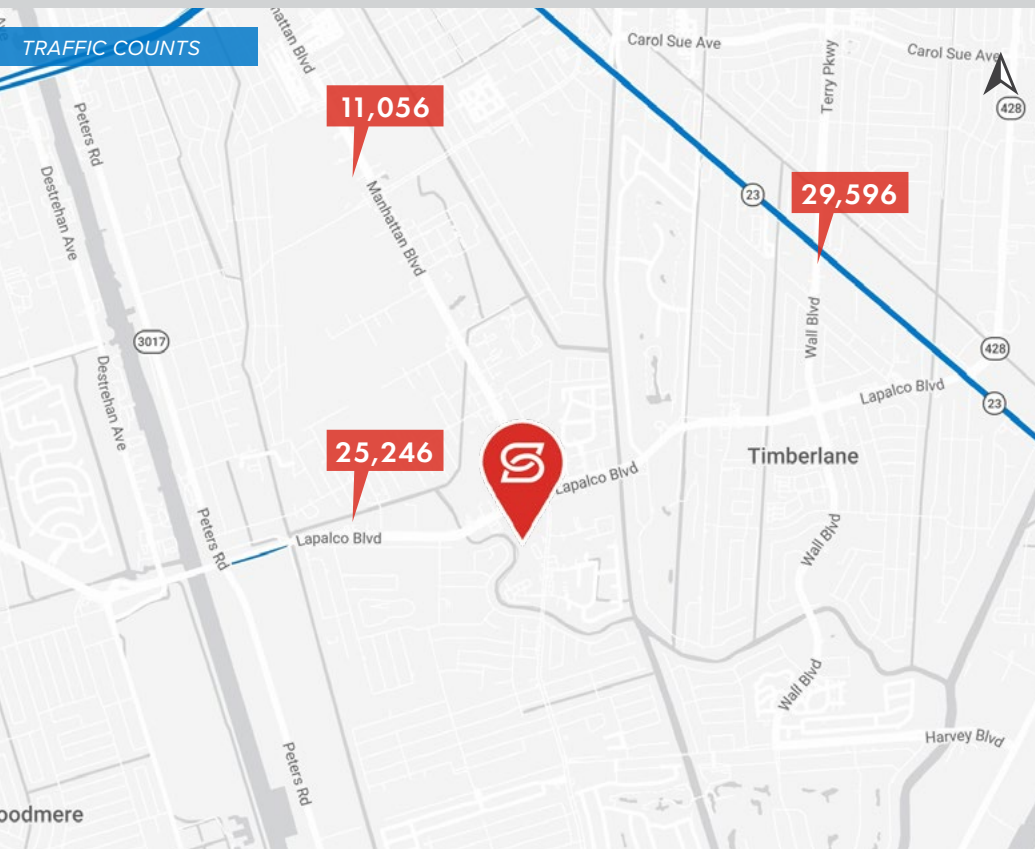
SUMMARY

AERIAL

INTERIOR PHOTOS

SURVEY & FLOOR PLAN

DEMOGRAPHICS



2026 DEMOGRAPHICS



POPULATION

5 MIN	7 MIN	10 MIN
39,959	68,985	110,976



AVG. HH INCOME

5 MIN	7 MIN	10 MIN
\$96,766	\$25,705	\$42,171



HOUSEHOLDS

5 MIN	7 MIN	10 MIN
14,924	25,705	42,171

Information from: Downtown Development District of New Orleans (2024)

STIRLINGPROP.COM

Information provided has been derived from sources deemed reliable. However, Stirling or its real estate advisors do not guarantee any information or property images and may be subject to errors, omissions, prior sale, lease, withdrawal, or changes in terms without notice. No express or implied warranties are given. Prospective purchasers/lessees are solely responsible for verifying all info and conducting their own due diligence. Stirling Properties LLC (aka Stirling Properties of Louisiana, LLC) is a licensed real estate firm in LA, MS, AL, GA, FL, TX, AR & KY. Headquartered at 16675 E. Brewster Rd, St 100, Covington, LA 70433. 2/26

Member of
RETAIL BROKERS NETWORK