



615 Gold SW

Commercial Space

Albuquerque, NM - Downtown
615 Gold Avenue SW



Available

- 16,500 SF | \$14,995/Mo
- Divisible
- Available 12/1/24



Huge Surrounding Population



Parking Lot Adjacent



Active Nightlife Area



HUB Zone qualified location

Please contact us for leasing opportunities

Demographics

	1 Mile	3 mile	5 mile
Population	14,049	96,593	249,517
Med. Income	\$30,407	\$34,357	\$37,683
Day Population	34,957	104,545	196,322

Surroundings Info

- Near City Hall & Courthouse District.
- Free Surface Parking included.
- Locally owned and managed.
- A.R.T stop across the street.



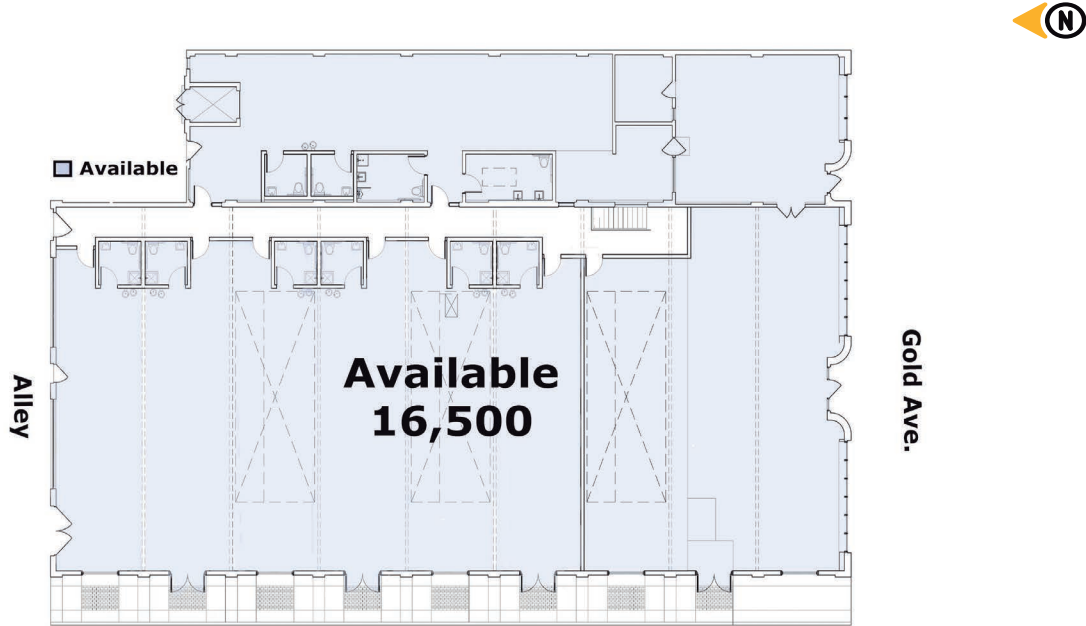
Contact

Brighton Pope
 505.884.3578
 Brighton.Pope@PetersonProperties.net

PetersonProperties.net
 /petersonpropertiesllc
 /petersonpropertiesllc
 /peterson.properties



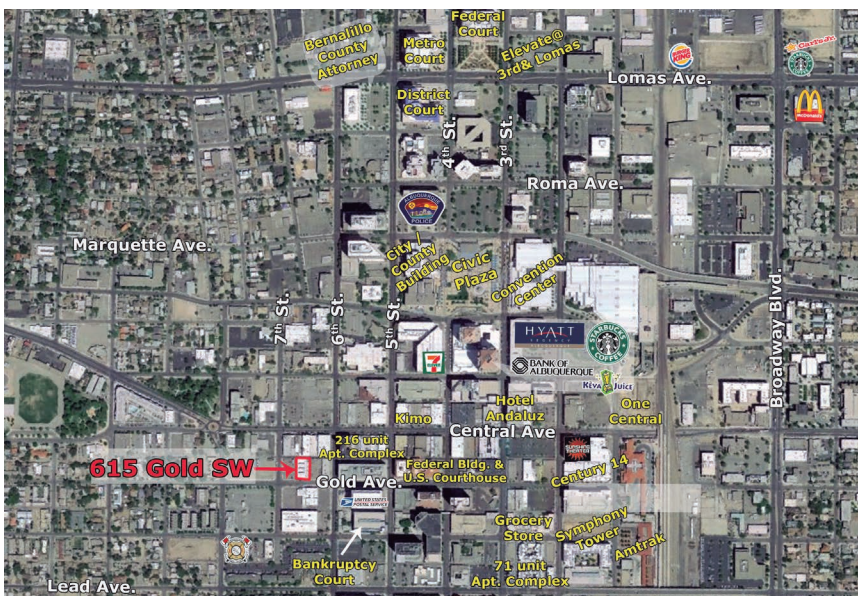
Site Plan



Please contact us for leasing opportunities



Aerial Map




615 Gold Ave SW Albuquerque, NM



Contact us

 Brighton Pope |  505.884.3578 |  Brighton.Pope@PetersonProperties.net

