

1024 East Jefferson Street

Siloam Springs, AR 72761

±60,000 SF | \$5 PSF



Industrial

1024 East Jefferson Street | Siloam Springs, AR 72761

For Lease

Property Information

Price	\$5/PSF (NNN)
Address	1024 E Jefferson St
Industrial Market	Northwest Arkansas
Industrial Submarket	Siloam Springs
Size	60,000 SF
Auto Parking	±2.65 Acres
Yard Space	Up to ±5 Acres Available Upon Request
Doors	6 Dock (8'x10') 1 Drive-In (14'x12')
Dock Levelers	Yes on All
Dock Bumpers	Yes on All
Sprinkler	Wet
Clear Height	22'-24'
Date Available	October 2026
Additional Information	8' Skirt and Air Compressor is Available



Industrial

1024 East Jefferson Street | Siloam Springs, AR 72761

For Lease

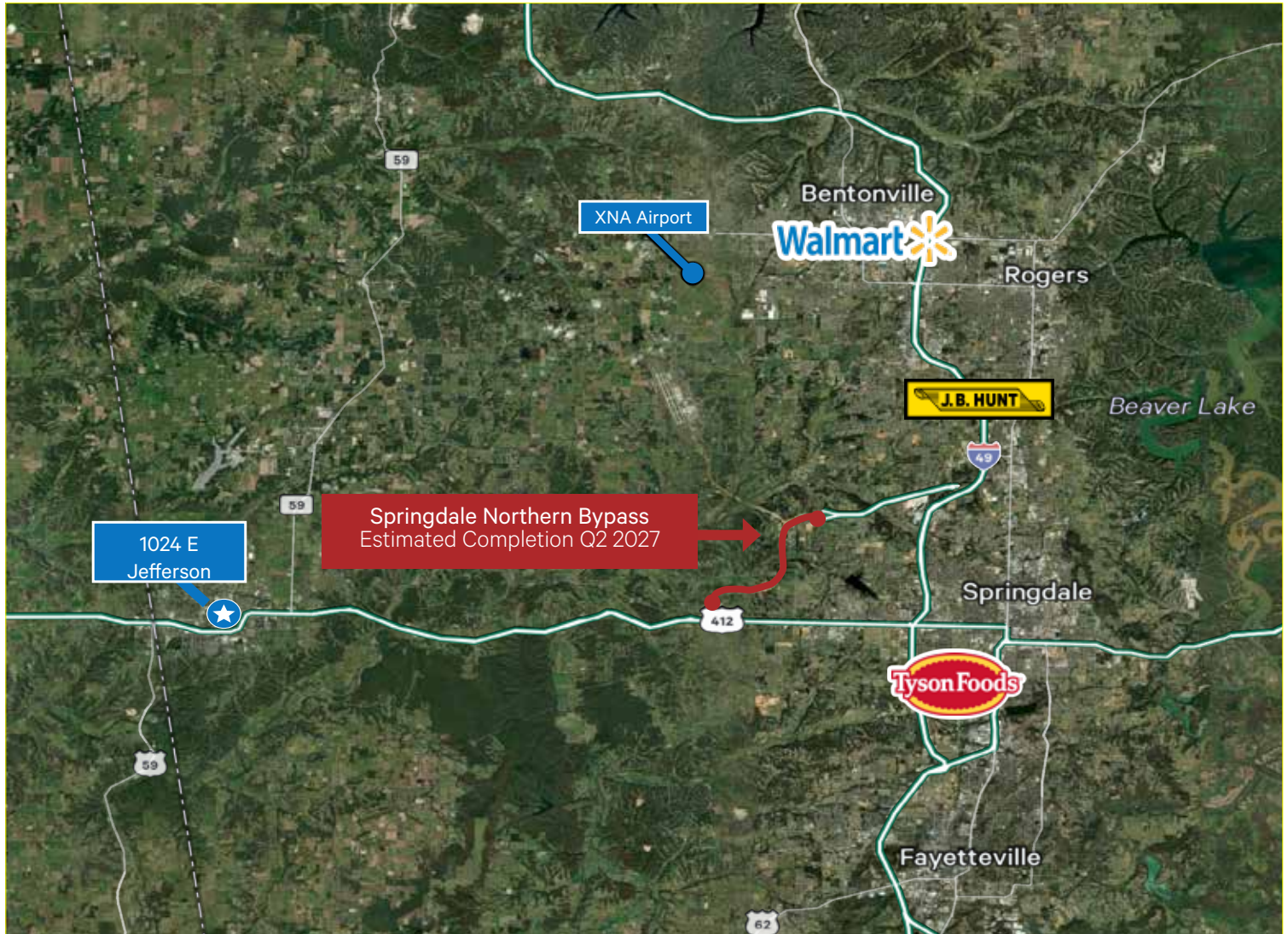
Photos



Industrial

1024 East Jefferson Street | Siloam Springs, AR 72761

For Lease



Contact Us

Alex Schemel

Senior Associate
+1 479 444 2549
alex.schemel@cbre.com

David Erstine, SIOR, CCIM

Senior Vice President
+1 479 301 2520
david.erstine@cbre.com

© 2026 CBRE, Inc. All rights reserved. This information has been obtained from sources believed reliable, but has not been verified for accuracy or completeness. You should conduct a careful, independent investigation of the property and verify all information. Any reliance on this information is solely at your own risk. CBRE and the CBRE logo are service marks of CBRE, Inc. All other marks displayed on this document are the property of their respective owners, and the use of such logos does not imply any affiliation with or endorsement of CBRE. Photos herein are the property of their respective owners. Use of these images without the express written consent of the owner is prohibited.