

OFFICE BUILDING | FOR LEASE

1035 SE Quincy Street, Topeka, KS 66612

Downtown location with 30 dedicated
on-site parking stalls



- Space available from 5,000 sf to 10,247 sf
- Lease Rate: \$11.90/SF/YR + utilities & maintenance
- Move-in ready condition
- Flexible floor plan with good mix of private and open office
- Building completely remodeled and updated in 2011
- 30 dedicated on-site parking spaces at no additional cost

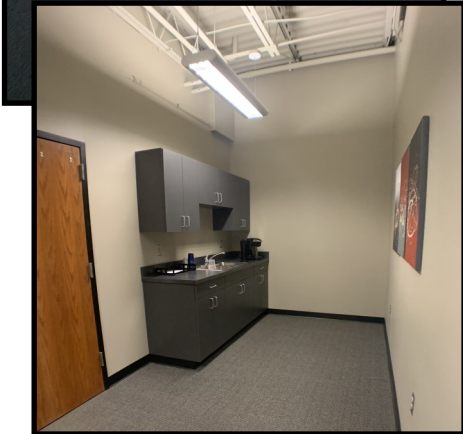
Ken Schmanke | 785.554.8140 | ken.schmanke@k1realtyllc.com

VALUE ADDED COMMERCIAL REAL ESTATE SERVICES SINCE 1988



OFFICE BUILDING | FOR LEASE

1035 SE Quincy Street, Topeka, KS 66612



Ken Schmanke | 785.554.8140 | ken.schmanke@k1realtyllc.com

VALUE ADDED COMMERCIAL REAL ESTATE SERVICES SINCE 1988

The information contained herein has been obtained from sources believed reliable. While K1 Realty llc does not doubt its accuracy, some of the information may need to be verified. K1 Realty llc makes no guarantee and warranty with regard to the property or this information.



OFFICE BUILDING | FOR LEASE

1035 SE Quincy Street, Topeka, KS 66612

10,247+/- sf of building on 24,904+/- sf of Land



Ken Schmanke | 785.554.8140 | ken.schmanke@k1realtyllc.com

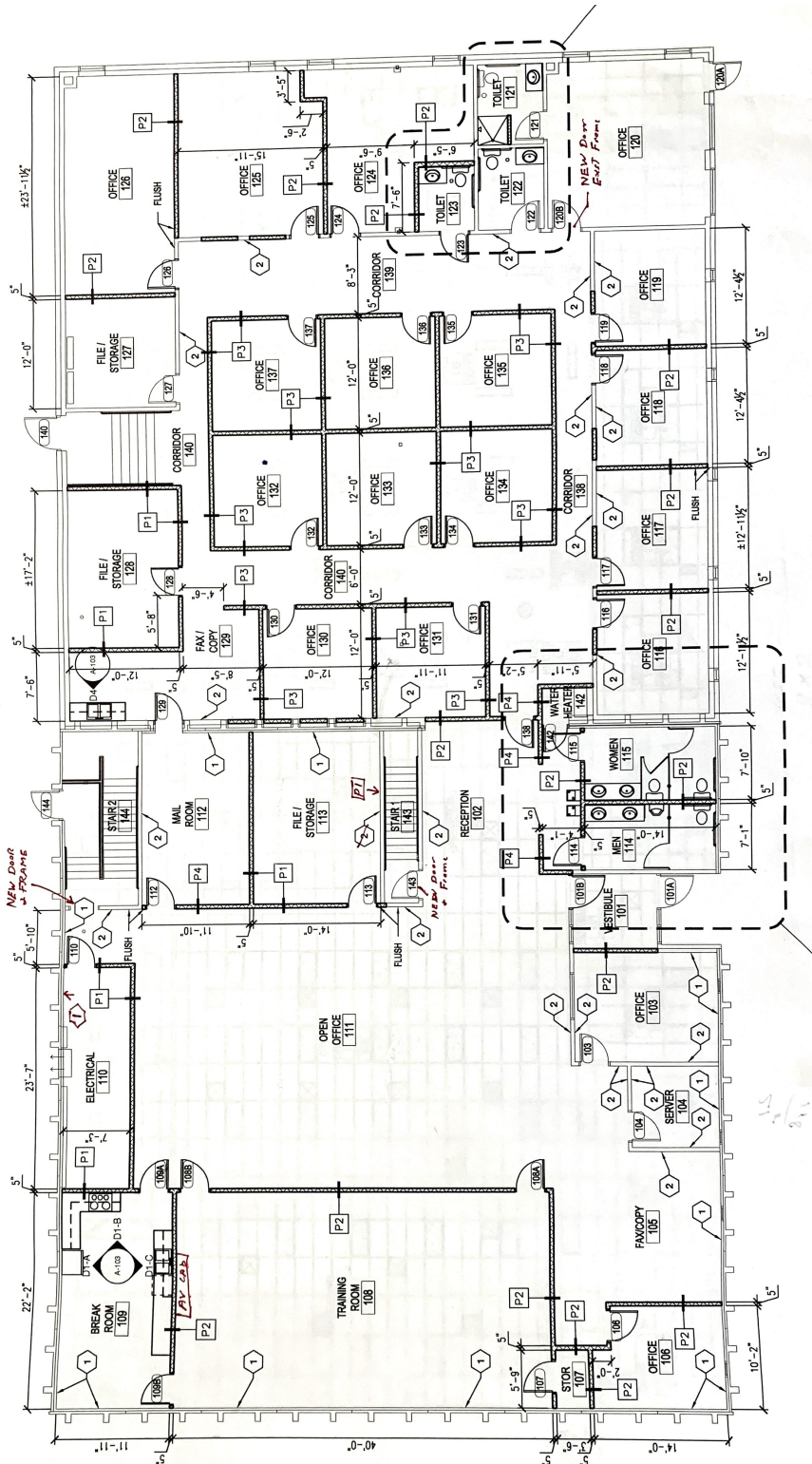
VALUE ADDED COMMERCIAL REAL ESTATE SERVICES SINCE 1988

The information contained herein has been obtained from sources believed reliable. While K1 Realty llc does not doubt its accuracy, some of the information may need to be verified. K1 Realty llc makes no guarantee and warranty with regard to the property or this information.



OFFICE BUILDING | FOR LEASE

1035 SE Quincy Street, Topeka, KS 66612



Space available From: 5,000 sf to 10,247 sf

Ken Schmanke | 785.554.8140 | ken.schmanke@k1realtyllc.com

VALUE ADDED COMMERCIAL REAL ESTATE SERVICES SINCE 1988

The information contained herein has been obtained from sources believed reliable. While K1 Realty llc does not doubt its accuracy, some of the information may need to be verified. K1 Realty llc makes no guarantee and warranty with regard to the property or this information.

