



Chestnut Flatz

1216 N Chestnut St
Lansing, Michigan 48906

Property Highlights

- 100% Occupied
- 7 units across 2 buildings
- 5 One bedroom apartments
- 2 Studio apartments
- Renovated in 2023
- Seller negotiable
- Additional property available to purchase as package (826 N. Walnut St.)
- Affordable entry point into the multifamily market

Offering Summary

Sale Price:	\$297,000
Lot Size:	10,956 SF

For More Information



Dave Robinson

Associate Broker

O: 517 487 9222 | C: 517 599 6846

drobinson@naimidmichigan.com



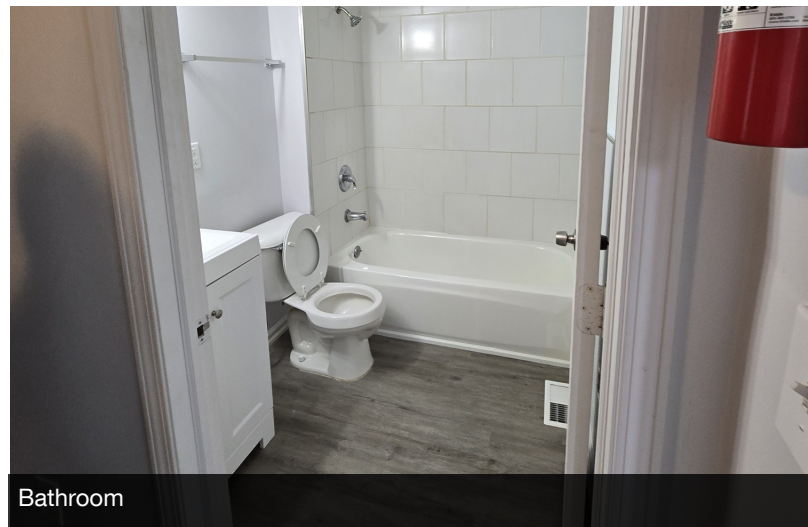
First Building



Second Building



Kitchen



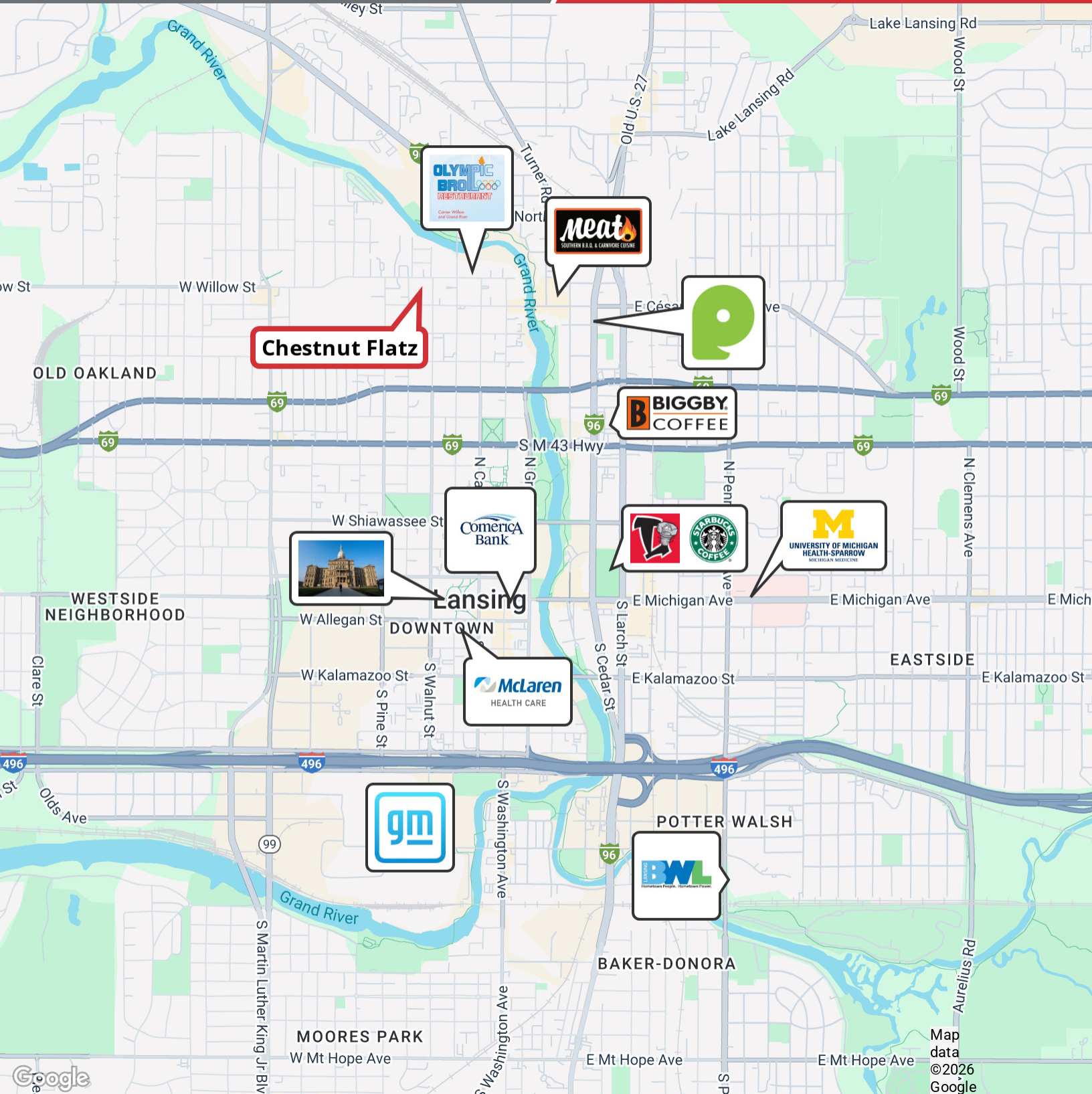
Bathroom



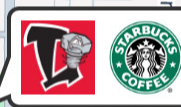
View of Driveway



Aerial Facing Downtown Lansing

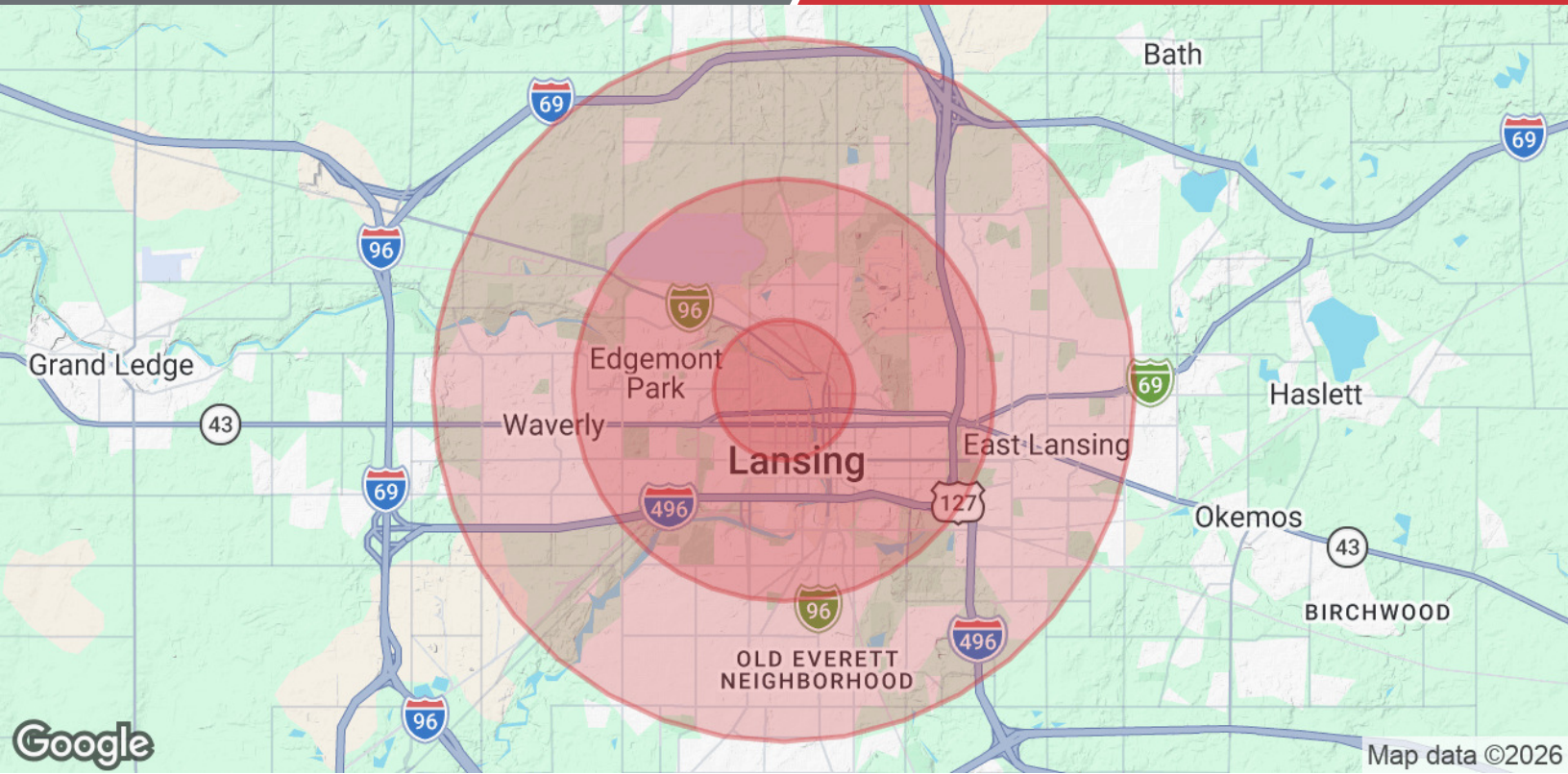


Chestnut Flatz



Map data ©2026 Google

NO WARRANTY OR REPRESENTATION, EXPRESS OR IMPLIED, IS MADE AS TO THE ACCURACY OF THE INFORMATION CONTAINED HEREIN, AND THE SAME IS SUBMITTED SUBJECT TO ERRORS, OMISSIONS, CHANGE OF PRICE, RENTAL OR OTHER CONDITIONS, PRIOR SALE, LEASE OR FINANCING, OR WITHDRAWAL WITHOUT NOTICE, AND OF ANY SPECIAL LISTING CONDITIONS IMPOSED BY OUR PRINCIPALS. NO WARRANTIES OR REPRESENTATIONS ARE MADE AS TO THE CONDITION OF THE PROPERTY OR ANY HAZARDS CONTAINED THEREIN ARE INTENDED TO BE IMPLIED.



Population	1 Mile	3 Miles	5 Miles
Total Population	13,034	71,640	169,350
Average Age	37	39	37
Average Age (Male)	36	38	36
Average Age (Female)	37	39	38
Households & Income	1 Mile	3 Miles	5 Miles
Total Households	5,921	32,703	70,904
# of Persons per HH	2.2	2.2	2.4
Average HH Income	\$58,749	\$69,888	\$73,541
Average House Value	\$124,276	\$148,167	\$184,991

Demographics data derived from AlphaMap