



JOIN THESE RETAILERS



RETAIL FOR GROUND LEASE

- 2.14 Acres Available
- Excellent access & visibility
- Served by a traffic signal
- Located in the heart of Montgomery Village
- Zoned CRT

COOPER HENRY

chenry@klnb.com | 443-632-2085

MICHAEL PATZ

mpatz@klnb.com | 443-632-2043

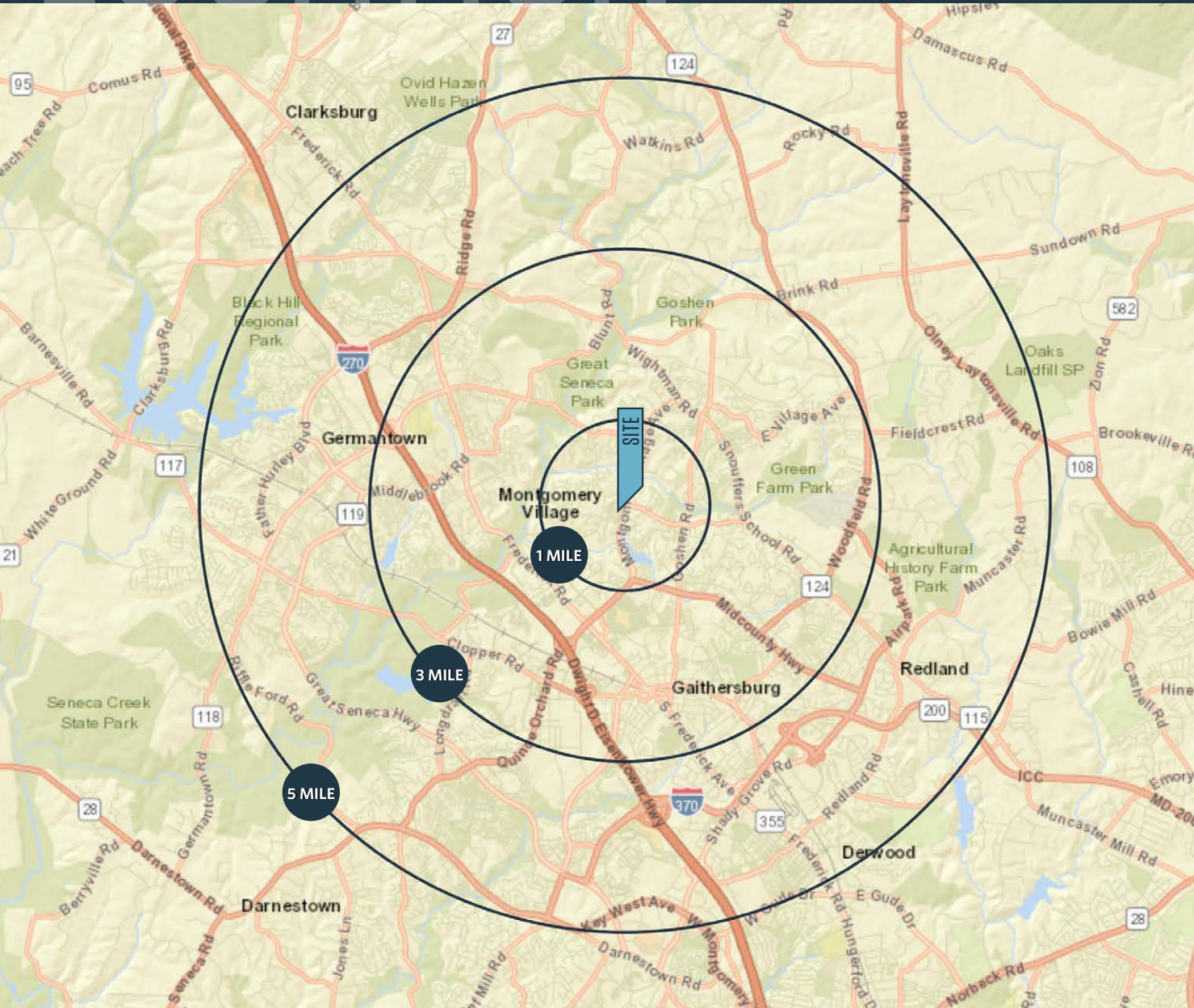
DIMITRI GEORGELAKOS

dgeorgelakos@klnb.com | 703-268-2710

LOCATION

MONTGOMERY VILLAGE AVE & CENTERWAY RD

MONTGOMERY VILLAGE, MD 20886, MONTGOMERY COUNTY



AVAILABLE SPACE:

2.14 Acres

DEMOGRAPHICS | 2019:

| 1-MILE | 3-MILE | 5-MILE |
|--------------------|-----------|-----------|
| Population | | |
| 23,172 | 138,952 | 282,800 |
| Daytime Population | | |
| 2,789 | 54,847 | 128,566 |
| Households | | |
| 8,480 | 47,215 | 99,739 |
| Average HH Income | | |
| \$101,551 | \$104,267 | \$123,048 |

[CLICK TO DOWNLOAD DEMOGRAPHIC REPORT](#)

TRAFFIC COUNTS | 2018:

| | |
|------------------------|------------|
| Montgomery Village Ave | 31,431 ADT |
| Centerway Road | 9,360 ADT |

COOPER HENRY

chenry@klnb.com | 443-632-2085

MICHAEL PATZ

mpatz@klnb.com | 443-632-2043

DIMITRI GEORGELAKOS

dgeorgelakos@klnb.com | 703-268-2710

klnb

MARKET

MONTGOMERY VILLAGE AVE & CENTERWAY RD

MONTGOMERY VILLAGE, MD 20886, MONTGOMERY COUNTY



COOPER HENRY
chenry@klnb.com | 443-632-2085

MICHAEL PATZ
mpatz@klnb.com | 443-632-2043

DIMITRI GEORGELAKOS
dgeorgelakos@klnb.com | 703-268-2710



CLOSE-UP

MONTGOMERY VILLAGE AVE & CENTERWAY RD

MONTGOMERY VILLAGE, MD 20886, MONTGOMERY COUNTY



COOPER HENRY
chenry@klnb.com | 443-632-2085

MICHAEL PATZ
mpatz@klnb.com | 443-632-2043

DIMITRI GEORGELAKOS
dgeorgelakos@klnb.com | 703-268-2710



SITE PLAN

MONTGOMERY VILLAGE AVE & CENTERWAY RD

MONTGOMERY VILLAGE, MD 20886, MONTGOMERY COUNTY



COOPER HENRY
chenry@klnb.com | 443-632-2085

MICHAEL PATZ
mpatz@klnb.com | 443-632-2043

DIMITRI GEORGELAKOS
dgeorgelakos@klnb.com | 703-268-2710





MONTGOMERY VILLAGE AVE & CENTERWAY RD

MONTGOMERY VILLAGE, MD 20886, MONTGOMERY COUNTY

FOR MORE INFORMATION, PLEASE CONTACT:

COOPER HENRY

chenry@klnb.com

443-632-2085

MICHAEL PATZ

mpatz@klnb.com

443-632-2043

DIMITRI GEORGELAKOS

dgeorgelakos@klnb.com

703-268-2710

100 West Road, Suite 505, Towson, MD 21204

.....

klnb.com

 facebook.com/KLNB

 [@KLNBLLC](https://twitter.com/KLNBLLC)

 linkedin.com/company/klnb

 instagram.com/klnbllc

CLICK TO VIEW PROPERTY WEBSITE

While we have no reason to doubt the accuracy of any of the information supplied, we cannot, and do not, guarantee its accuracy. All information should be independently verified prior to a purchase or lease of the property. We are not responsible for errors, omissions, misuse, or misinterpretation of information contained herein and make no warranty of any kind, express or implied, with respect to the property or any other matters.