

FOR
LEASE

**COMMERCIAL OFFICE
SPACE AVAILABLE**

2100 MARKET ST, WHEELING, WV



**HARVEY
GOODMAN**

Broker, John Sambuco

*Jay
Goodman!*





**HARVEY
GOODMAN**

Broker, John Sambuco



Office Space Available

TURN KEY SPACE - Explore the opportunities at the historic Bennett Square. Wheeling, WV landmark office building underwent a multimillion dollar historic restoration. Class A office building has preserved the historic character along with modern amenities. Enjoy a truly professional setting for your business. Full service leases available which include utilities, building operating expenses, interior and exterior maintenance, and janitorial services. ADA accessible with elevator access.



**HARVEY
GOODMAN**

Broker, John Sambuco

Property Highlights



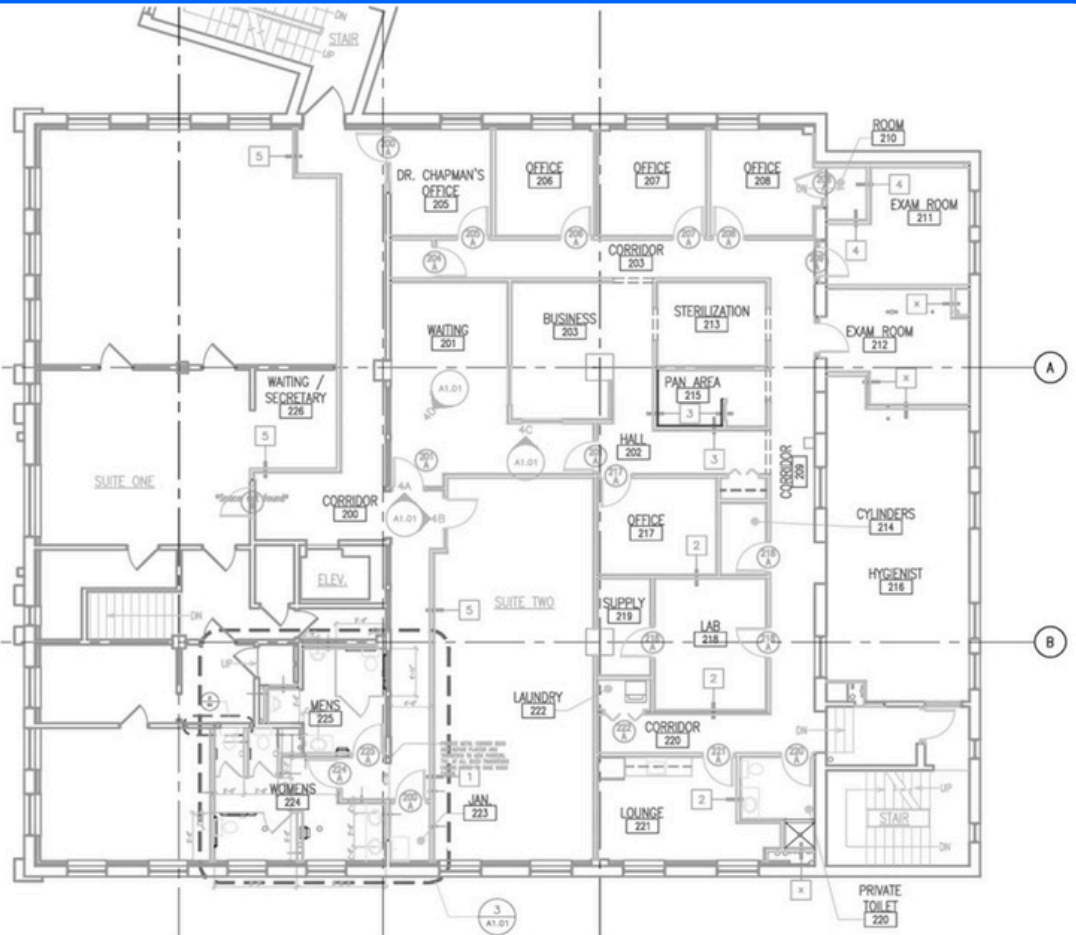
- **Multi-Million Dollar Historic Restoration.**
- **Class A Office Building.**
- **Full-Service Leases Available.**
- **ADA Accessible with Elevator Available.**

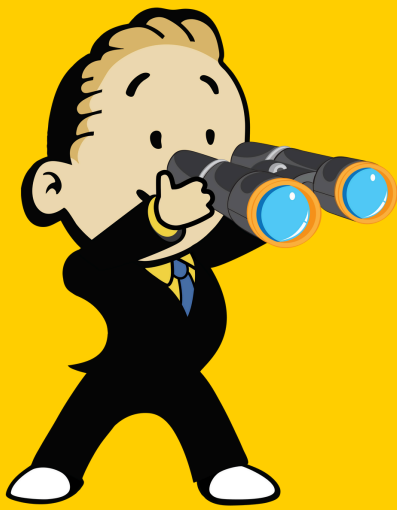


FOR LEASE
\$18 sf



FLOOR PLAN

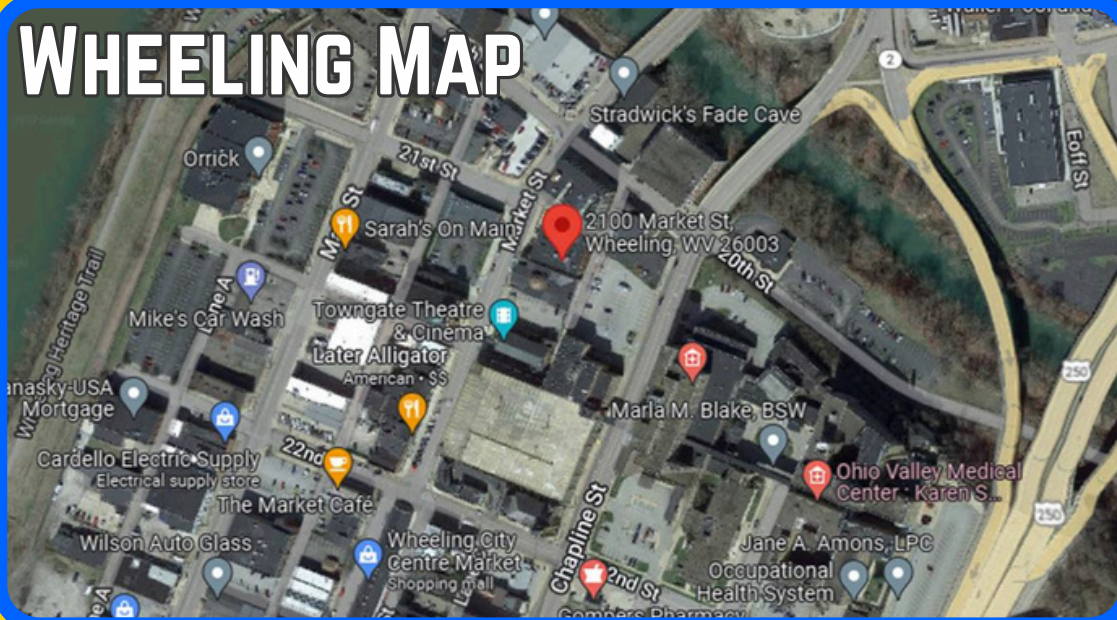




AERIAL PLATS



WHEELING MAP





**HARVEY
GOODMAN**

Broker, John Sambuco

**THANK
YOU!**



STEUBENVILLE, OH OFFICE
2700 Sunset Blvd
Steubenville, Ohio 43952
740-264-0300

ST CLAIRSVILLE, OH OFFICE
250 W. Main St
St. Clairsville, Ohio 43950
740-695-3131

MARTINS FERRY, OH OFFICE
410 Walnut St
Martin Ferry, OH 43935
740-633-6363

WEIRTON, WV OFFICE
253 Three Springs Dr
Weirton, WV 26062
304-723-3131

WHEELING, WV, OH OFFICE
980 R National Rd
Wheeling, WV 26003
304-233-4451

BARNESVILLE, OH OFFICE
820 Bond Ave
Barnesville, Ohio 43713
740-425-3535

JAY GOODMAN, CCIM
O (740) 695-3131, C (773) 936-6511
jayg@goodmanrealtor.com



The information contained in the following Marketing Package is proprietary and strictly confidential. It is intended to be reviewed only by the party receiving it from Harvey Goodman and should not be made available to any other person or entity without the written consent of Harvey Goodman Realtor.

The information in this market package has been secured by sources deemed to be reliable. Harvey Goodman Realtor makes no representations or warranties expressed or implied as to the accuracy of this information. References to square footage or age are approximate. Purchaser must verify the accuracy of the information and bears all risks for any inaccuracies. Information is subject to verification and no liability for errors or omissions are assumed.