

# SUMMIT DISTRIBUTION CENTER

## 34,368 SF

For Lease

### SPECIFICATIONS

<b>Size</b>	34,368 SF Available - 1,300 Office SF - 33,068 Warehouse SF	<b>Truck Court</b>	135' (75' concrete truck apron)	<b>Column Spacing</b>	45'x52'
<b>Power</b>	250 277/480 1 Phase	<b>Loading</b>	Six (6) (9'x10') dock high doors all equipped with levelers, seals, bumpers and lights  One (1) (12'x14') ground level door	<b>Sprinklered</b>	ESFR fire suppression
<b>Lighting</b>	LED warehouse lighting with motion sensors	<b>Location</b>			Directly South of Salt Lake City International Airport 0.5 mile from Bangerter Hwy. & California Ave. 1 mile from I-80 & I-215
<b>Clear Height</b>	30'				



AVAILABLE  
34,368 SF

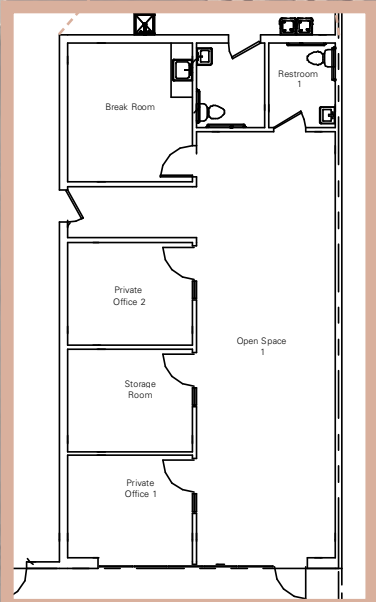
LEASED

LEASED

6 Dock High Doors

TRUCK COURT

135'



GL - Ground Level Door  
DH - Dock High Door

LOCAL ACCESS

BANGERter HIGHWAY

5 Minutes

I-215

5 Minutes

I-15

7 Minutes

SR-201

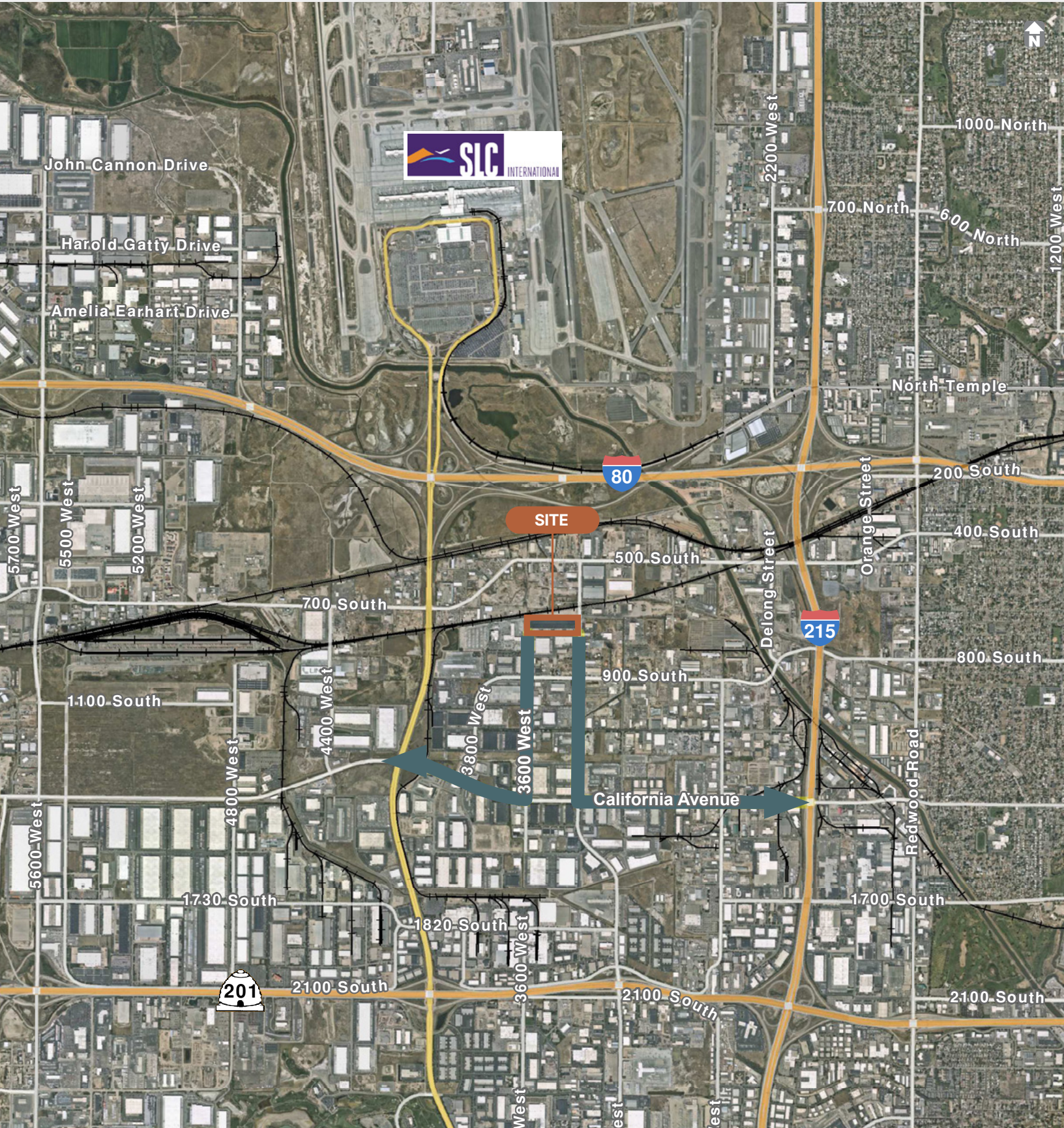
6 Minutes

I-80

7 Minutes

SALT LAKE CITY INTERNATIONAL AIRPORT

7 Minutes



# CONTACT INFORMATION

720 S. Gladiola St., Suite A-2  
Salt Lake City, UT 84104

**Jeff Heaton, SIOR**

jheaton@newmarkmw.com  
t 801-578-5539

**Eli Priest**

epriest@newmarkmw.com  
t 801-746-4746



**FULL SERVICE  
COMMERCIAL REAL ESTATE**

376 E. 400 S., Suite 120  
Salt Lake City, UT 84111  
Office 801-578-5555  
[www.newmarkmw.com](http://www.newmarkmw.com)

This is not an offer or acceptance of an offer to lease space. A lease will only be offered or made in a written agreement signed by landlord.  
No representation or warranty of any kind is made by landlord unless set forth in a written definitive lease executed by the landlord.