

FOR SALE

±5,733 & ±5,829 SF INDUSTRIAL BUILDINGS

6430 & 6450 Roland St, Buena Park, CA 90621



Buildings Can be Sold Separately or Together

PROPERTY FEATURES

6430 Roland Street:

- ±5,829 SF Building
- 12'-15' Warehouse Clear Height
- Two (2) Ground Level Doors
- 600 Amps of Power at 240 Volt (Please Verify)
- Sprinklers Throughout Building
- 6 Parking Spaces
- Shared Fenced Yard

6450 Roland Street:

- ±5,733 SF Building
- 12'-15' Warehouse Clear Height
- Two (2) Ground Level Doors
- 800 Amps of Power at 240 Volt (Please Verify)
- HVAC in Warehouse Area
- Sprinklers Throughout Building
- 6 Parking Spaces
- Shared Fenced Yard



Note: Measurements and sizes are approximate and are subject to change.

STAN S. KWAK
Senior VP | Partner
Lic. #01824776
(714) 935-2327
skwak@voitco.com

SELDEN MCKNIGHT
Vice President | Partner
Lic. #2027919
(714) 935-2323
smcknight@voitco.com

ZAC KOLANDER
Senior Associate
Lic #02096759
(714) 935-2301
zkolander@voitco.com

Voit
REAL ESTATE SERVICES

CLIENT
RESOURCE GROUP

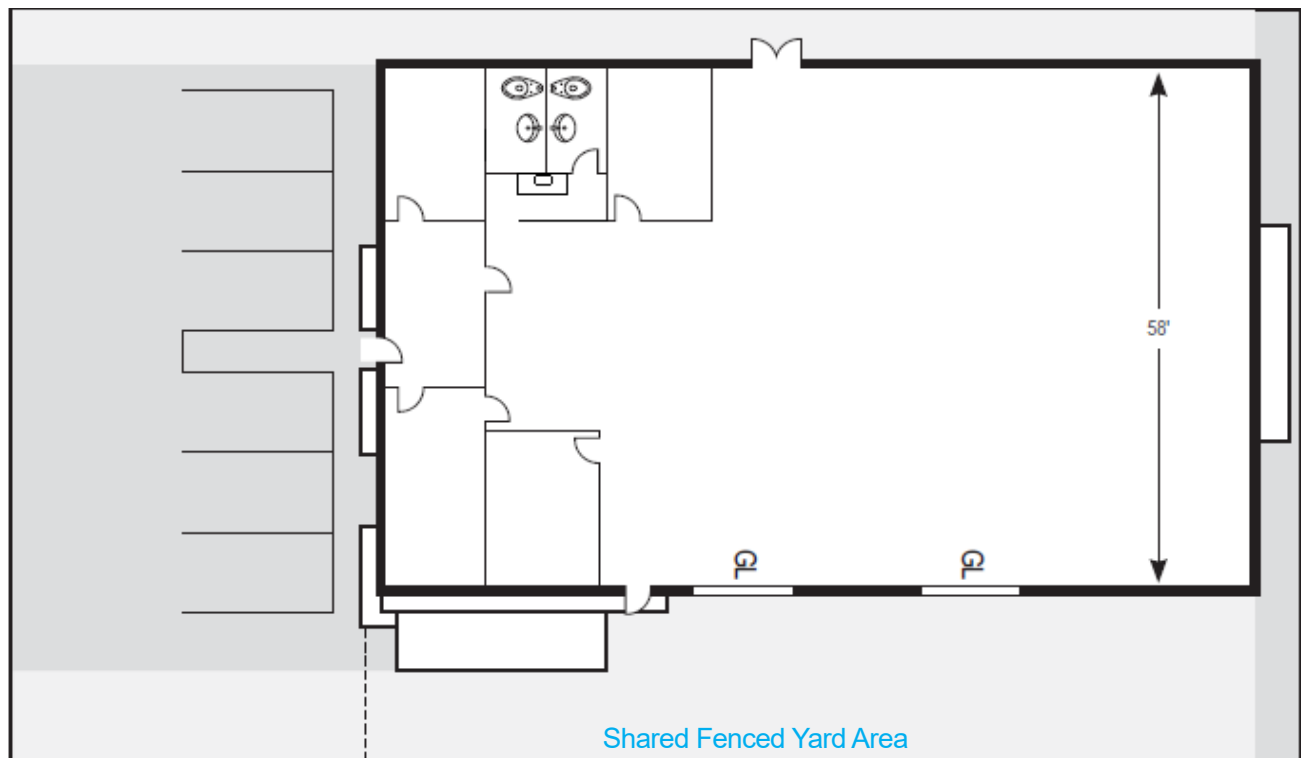
2400 E. Katella Avenue, Suite 750
Anaheim, CA 92806
www.VoitCo.com

FOR SALE

±5,733 & ±5,829 SF INDUSTRIAL BUILDINGS

6430 & 6450 Roland St, Buena Park, CA 90621

6430 SITE PLAN



Note: Measurements and sizes are approximate and are subject to change.

STAN S. KWAK
Senior VP | Partner
Lic. #01824776
(714) 935-2327
skwak@voitco.com

SELDEN MCKNIGHT
Vice President | Partner
Lic. #2027919
(714) 935-2323
smcknight@voitco.com

ZAC KOLANDER
Senior Associate
Lic #02096759
(714) 935-2301
zkolander@voitco.com

Voit
REAL ESTATE SERVICES

CLIENT
RESOURCE GROUP

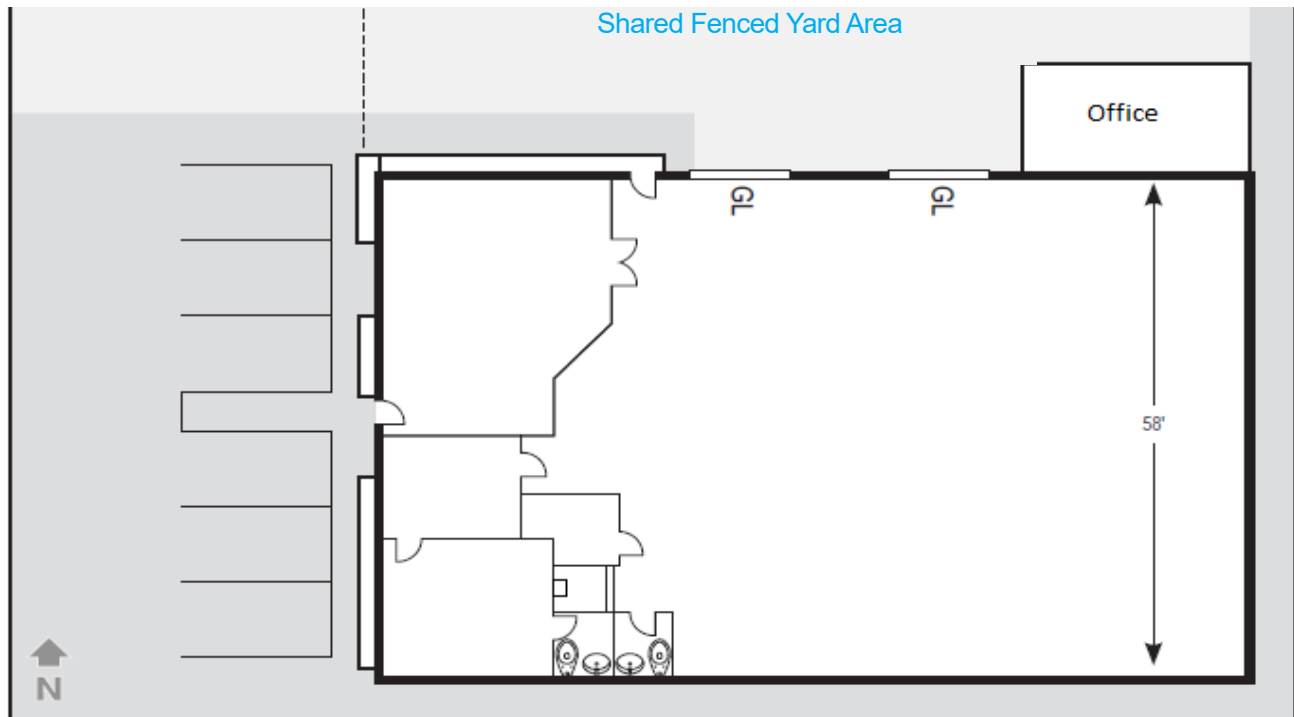
2400 E. Katella Avenue, Suite 750
Anaheim, CA 92806
www.VoitCo.com

FOR SALE

±5,733 & ±5,829 SF INDUSTRIAL BUILDINGS

6430 & 6450 Roland St, Buena Park, CA 90621

6450 SITE PLAN



Note: Measurements and sizes are approximate and are subject to change.

STAN S. KWAK
Senior VP | Partner
Lic. #01824776
(714) 935-2327
skwak@voitco.com

SELDEN MCKNIGHT
Vice President | Partner
Lic. #2027919
(714) 935-2323
smcknight@voitco.com

ZAC KOLANDER
Senior Associate
Lic #02096759
(714) 935-2301
zkolander@voitco.com

Voit
REAL ESTATE SERVICES

CLIENT
RESOURCE GROUP

2400 E. Katella Avenue, Suite 750
Anaheim, CA 92806
www.VoitCo.com