

1701 SW JEFFERSON ST

PORTLAND, OR 97201

FOR LEASE



Norris & Stevens

INVESTMENT REAL ESTATE SERVICES



MATT LYMAN

503.225.8454 (o) | 503.507.4880 (c)

MattL@norris-stevens.com

LUIS MARTIN DEL CAMPO

503.416.8422 (o) | 503.475.2079 (c)

LuisM@norris-stevens.com

Information contained herein has been obtained from others and considered to be reliable; however, a prospective purchaser or lessee is expected to verify all information to their own satisfaction.

SEPT 2025

EXECUTIVE SUMMARY



FEATURES:

- Grade level loading
- Off-street parking for 9 cars
- 6 Separate kitchen spaces
- Corner location with multiple points of entry

DEMOGRAPHICS

	1 Mile	5 Mile
2024 Population	47,895	422,386
2029 Population	48,198	417,155
Pop Annual Growth 20-24	2.8%	-0.1%
2024 Households	29,654	197,275
2029 Households	29,798	194,747
Avg Household Income	\$92,507	\$120,901

Norris & Stevens

INVESTMENT REAL ESTATE SERVICES



1701 SW JEFFERSON ST
FOR LEASE

PROPERTY SUMMARY

Address:	1701 SW Jefferson St.
City/State/Zip Code:	Portland, OR 97201
County:	Multnomah County
Asking rate:	\$18.50/SF NNN
Land size:	± 0.26 AC
Building size:	± 9,747 SF
Floors:	1
Year built:	1924 (renov 2001)

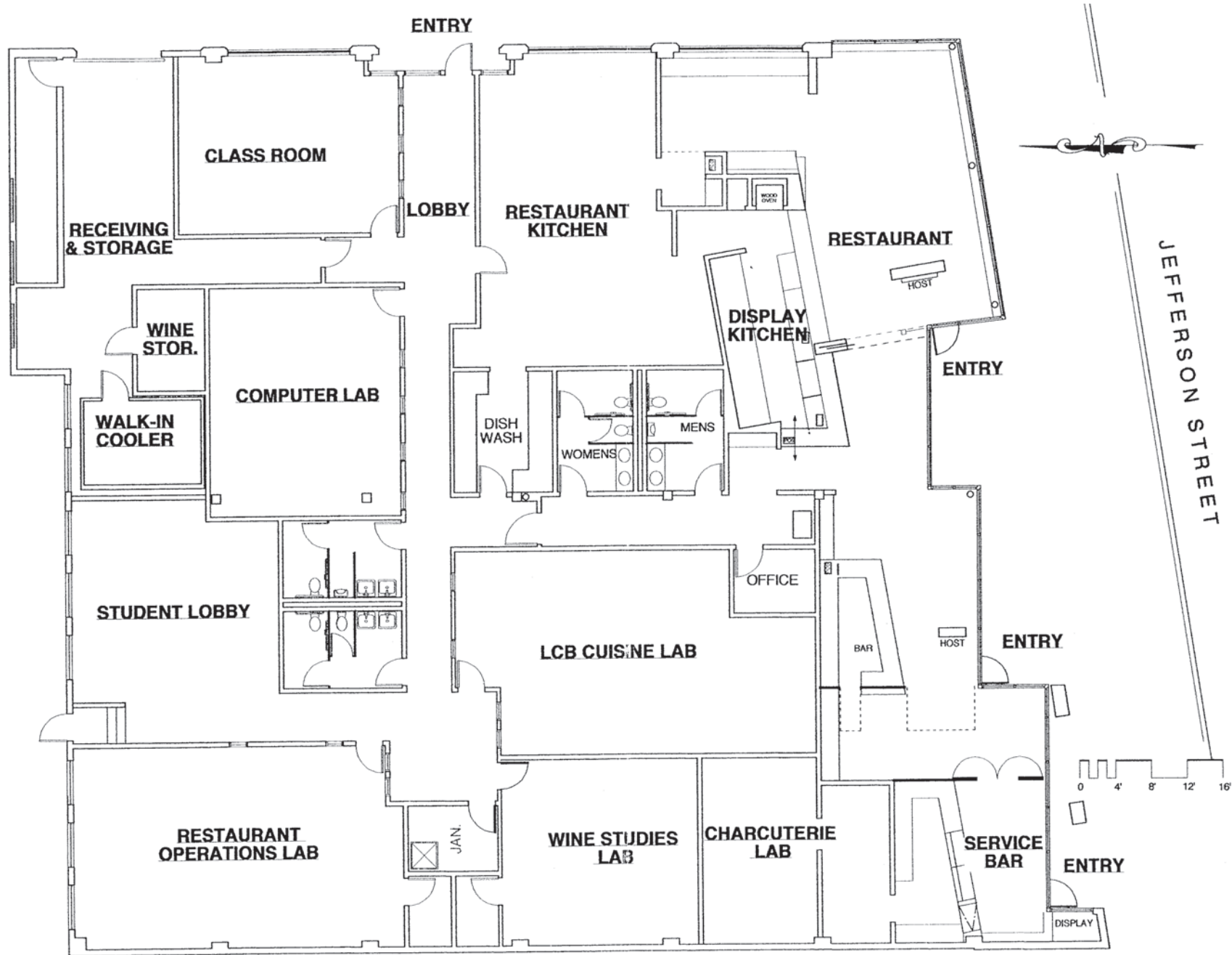


503.223.3171 • NORRIS-STEVENS.COM

Information contained herein has been obtained from others and considered to be reliable; however, a prospective purchaser or lessee is expected to verify all information to their own satisfaction.

FLOOR PLANS

1701 SW JEFFERSON ST
FOR LEASE



Norris & Stevens

INVESTMENT REAL ESTATE SERVICES



503.223.3171 • NORRIS-STEVENS.COM

Information contained herein has been obtained from others and considered to be reliable; however, a prospective purchaser or lessee is expected to verify all information to their own satisfaction.

1701 SW JEFFERSON ST
FOR LEASE



Norris & Stevens

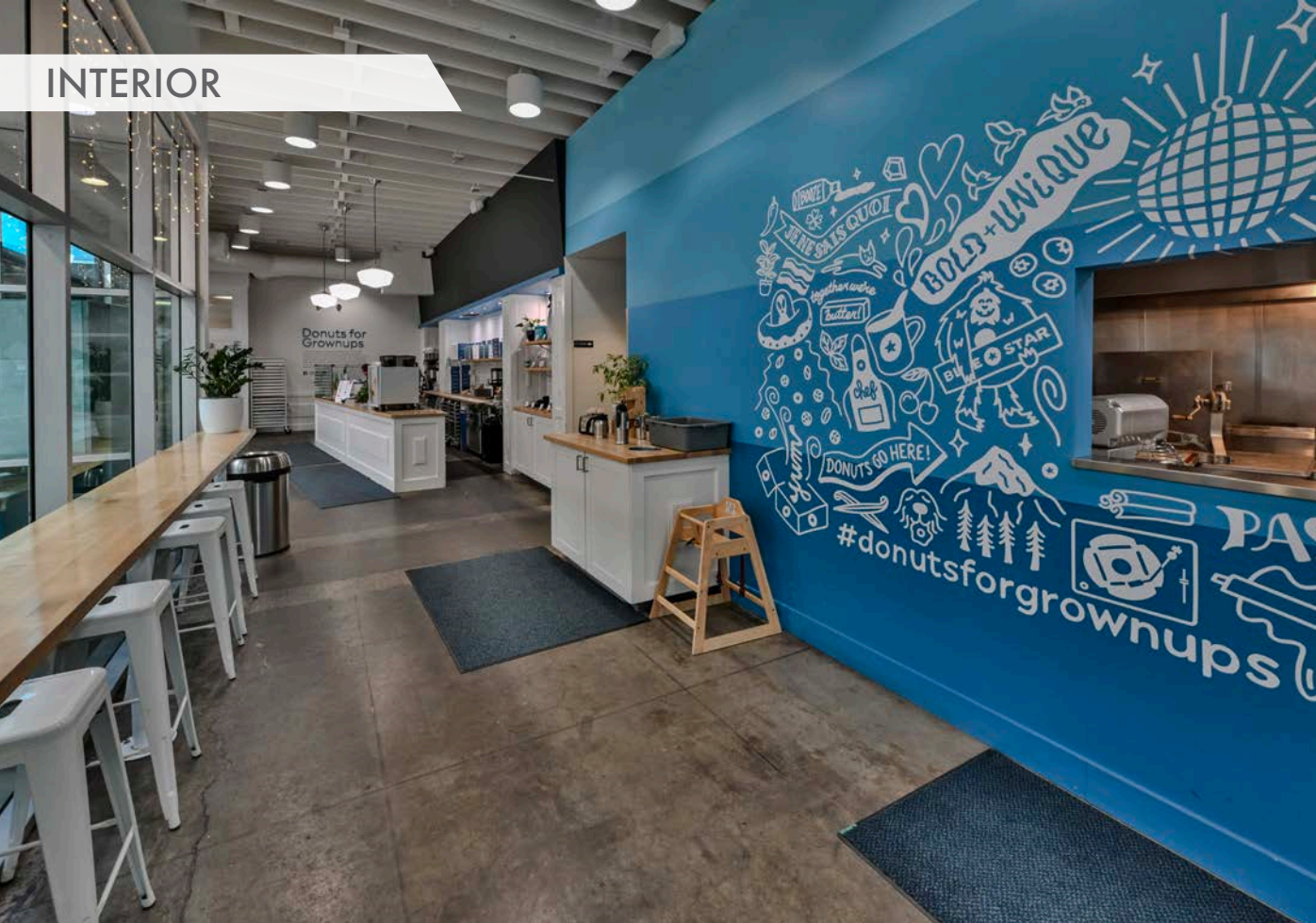
INVESTMENT REAL ESTATE SERVICES



503.223.3171 • NORRIS-STEVENS.COM

Information contained herein has been obtained from others and considered to be reliable; however, a prospective purchaser or lessee is expected to verify all information to their own satisfaction.

INTERIOR



1701 SW JEFFERSON ST
FOR LEASE

Norris & Stevens

INVESTMENT REAL ESTATE SERVICES



503.223.3171 • NORRIS-STEVENSON.COM

Information contained herein has been obtained from others and considered to be reliable; however, a prospective purchaser or lessee is expected to verify all information to their own satisfaction.



Norris & Stevens

INVESTMENT REAL ESTATE SERVICES



900 SW 5th Ave, 17th Floor • Portland, OR 97204
503.223.3171 • www.norris-stevens.com

MATT LYMAN

503.225.8454 (o) | 503.507.4880 (c)

MattL@norris-stevens.com

LUIS MARTIN DEL CAMPO

503.416.8422 (o) | 503.475.2079 (c)

LuisM@norris-stevens.com

Copyright © 2025 Norris & Stevens, Inc. Information contained herein has been obtained from others and considered to be reliable; however, a prospective purchaser or lessee is expected to verify all information to their own satisfaction.