

ALOHA MEDICAL DENTAL SQUARE

18285 - 18455 SW Alexander St | Aloha, OR 97006

FOR LEASE



MEDICAL OFFICE SPACE FOR LEASE

DETAILS

- Lease Rate: Call for Rate

18455 BUILDING

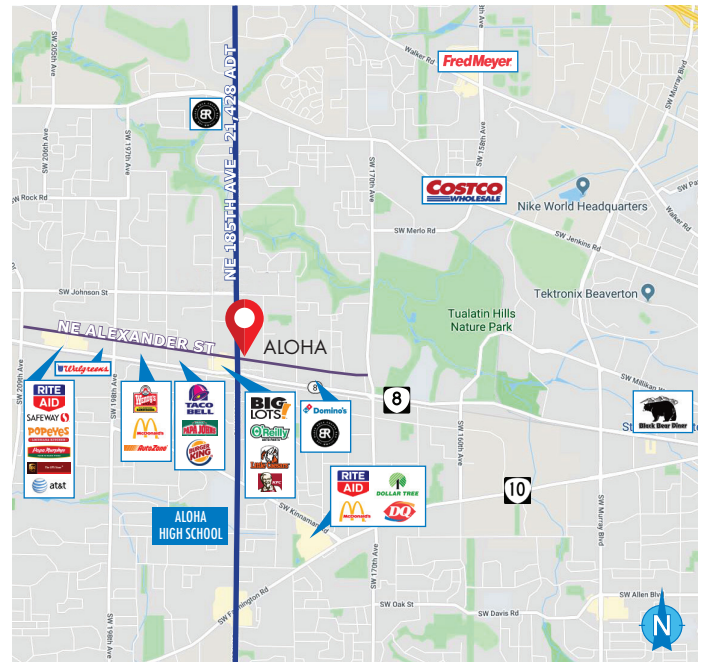
- Building Size: $\pm 4,020$ SF
Can be divided into two suites,
 $\pm 1,693$ SF and $\pm 2,327$ SF
- Current Build-Out: Dental office

18285 BUILD-TO-SUIT

- Building F: $\pm 9,952$ SF
- Building G (Phase 2): $\pm 6,336$ SF
- Total: $\pm 16,288$ SF

FEATURES

- High exposure on the corner of Alexander & 185th
- Zoning: Washco Community Core Mixed Use (CCMU)
- 10 Minutes from Highway 26
- 12 Minutes to downtown Beaverton
- Plenty of off-street parking



01.28.2020

For more information or a property tour, please contact:

TIM BUDELMAN

503.225.8472

TimB@norris-stevens.com



Information contained herein has been obtained from others and considered to be reliable; however, a prospective purchaser or lessee is expected to verify all information to his/her own satisfaction.

Norris & Stevens

INVESTMENT REAL ESTATE SERVICES

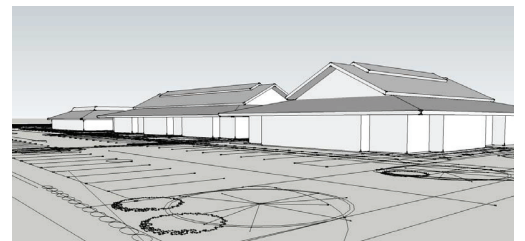
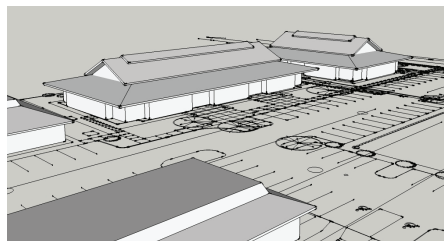
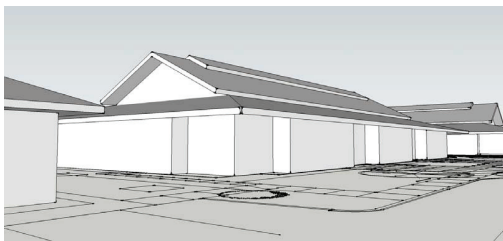
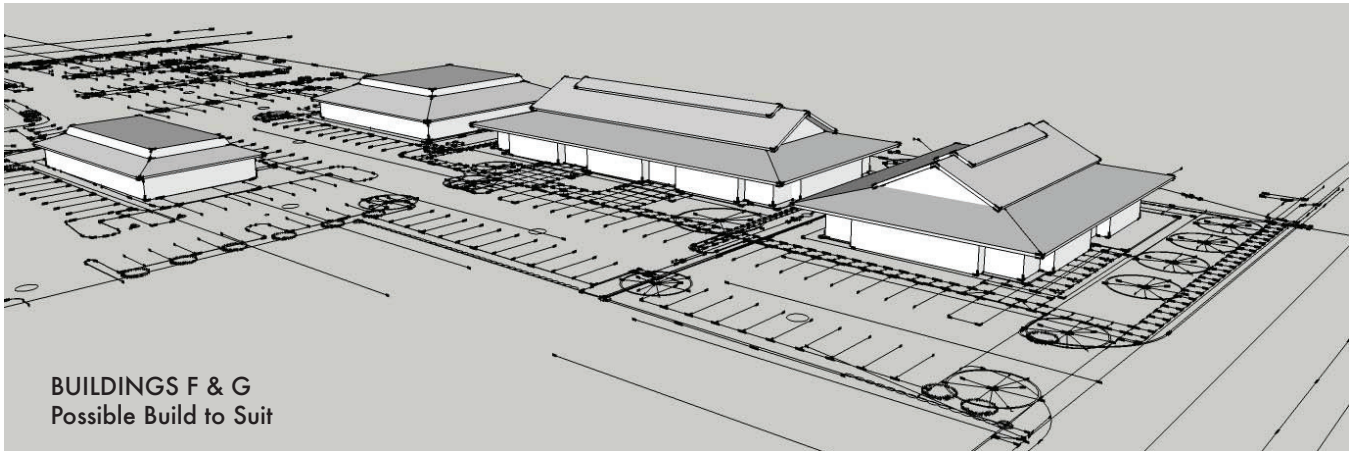
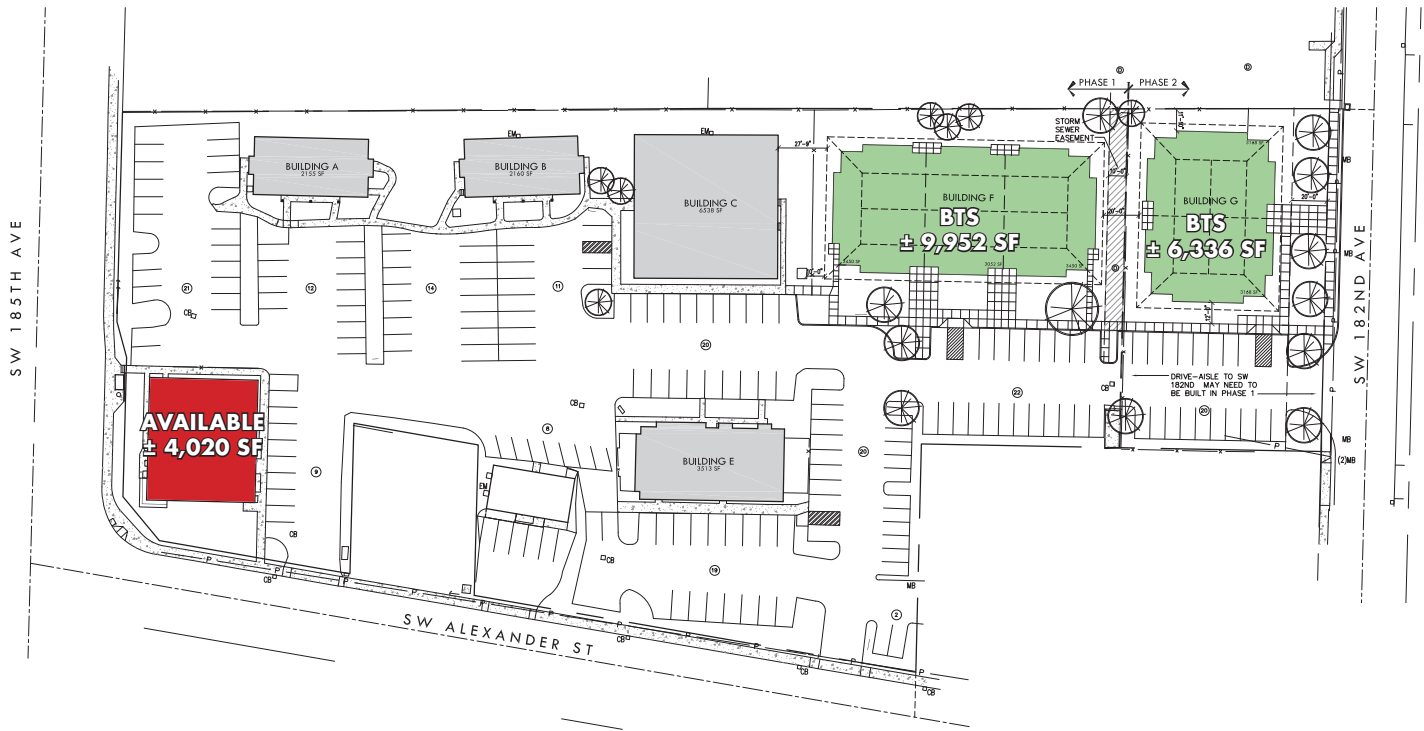
900 SW 5th Avenue • 17th Floor • Portland, OR 97204
503.223.3171 • norris-stevens.com

ALOHA MEDICAL DENTAL SQUARE

18285 - 18455 SW Alexander St | Aloha, OR 97006

FOR LEASE

SITE PLAN/ BLDG's F & G



For more information or a property tour, please contact:

TIM BUDELMAN
503.225.8472
TimB@norris-stevens.com

Norris & Stevens

INVESTMENT REAL ESTATE SERVICES



Information contained herein has been obtained from others and considered to be reliable; however, a prospective purchaser or lessee is expected to verify all information to his/her own satisfaction.

900 SW 5th Avenue • 17th Floor • Portland, OR 97204
503.223.3171 • norris-stevens.com

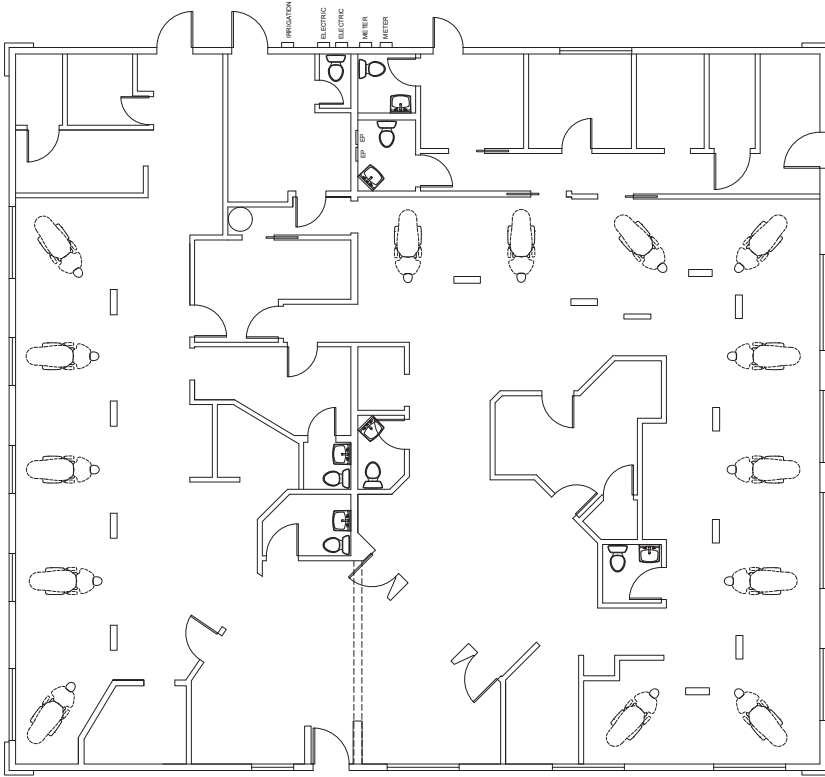
ALOHA MEDICAL DENTAL SQUARE

18285 - 18455 SW Alexander St | Aloha, OR 97006

FOR LEASE

BUILDING D

± 4,020 SF



For more information or a property tour, please contact:

TIM BUDELMAN
503.225.8472
TimB@norris-stevens.com



Information contained herein has been obtained from others and considered to be reliable; however, a prospective purchaser or lessee is expected to verify all information to his/her own satisfaction.

Norris & Stevens

INVESTMENT REAL ESTATE SERVICES

900 SW 5th Avenue • 17th Floor • Portland, OR 97204
503.223.3171 • norris-stevens.com