

# THE WILMORE 4600 NORTH KENMORE AVENUE

uptown / chicago, il



MID-AMERICA® URBAN

RETAIL AVAILABLE IMMEDIATELY



# THE WILMORE

## 4600 NORTH KENMORE AVENUE

uptown / chicago, il

### SPACE DETAILS

#### ADDRESS

4600 N. Kenmore Avenue  
Chicago, Illinois 60640

#### NEIGHBORING RETAILERS



#### AVAILABILITY

1,016 - 2,621 SF

#### FEATURES

New retail space located at the base of a new 62-unit apartment building

One block east of Wilson Red/Purple Line stop and Broadway corridor

Truman City College located 1-block west (over 8,000 students and faculty)

Prominent corner position at Wilson and Kenmore Avenues

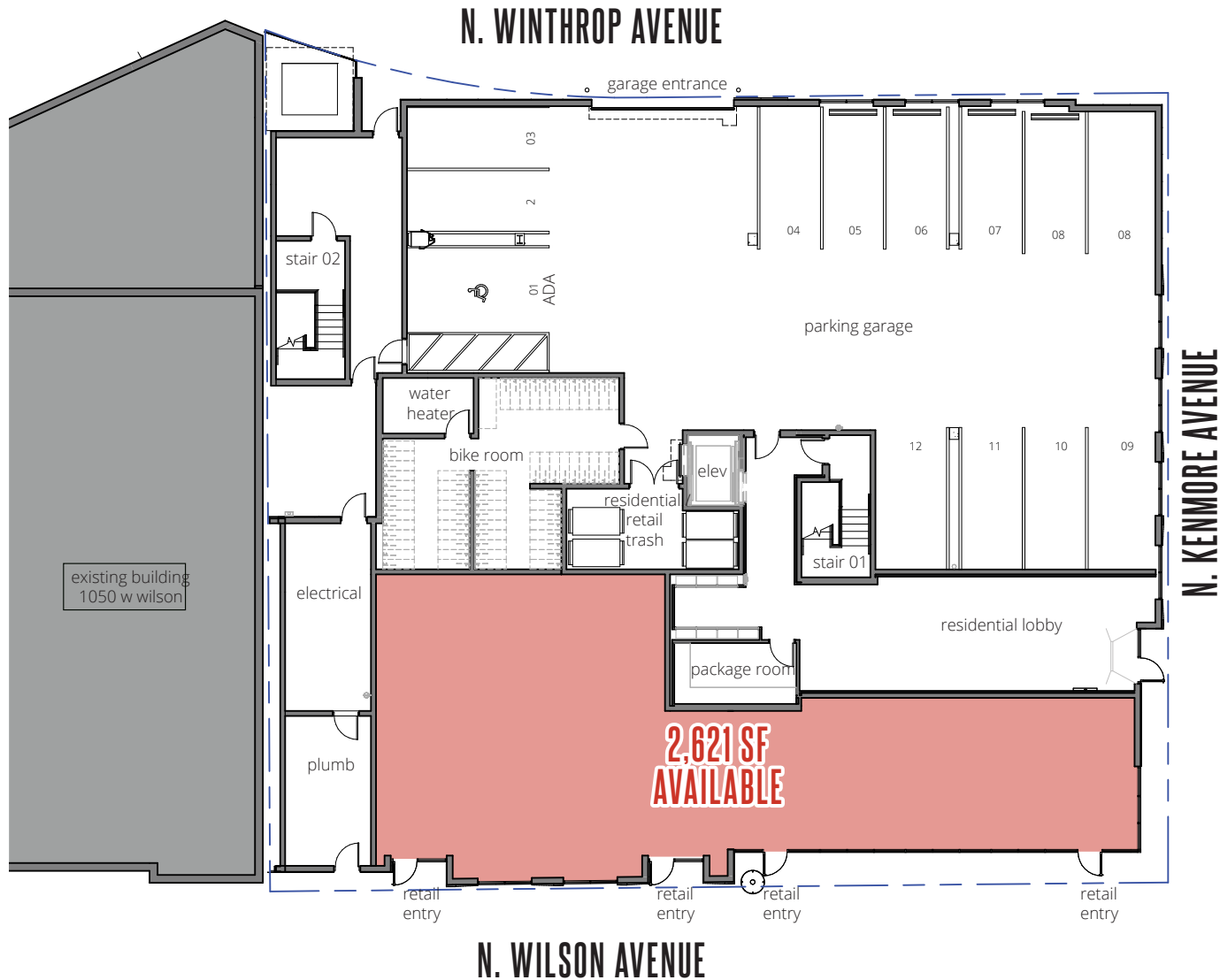
#### DEMOGRAPHICS

	0.5 Miles	1 Miles	1.5 Miles
POPULATION	28,914	76,086	144,586
HOUSEHOLDS	15,735	43,271	80,891
AVG HOUSEHOLD INCOME	\$88,669	\$105,808	\$120,310
DAYTIME POPULATION	22,532	54,032	100,479

# THE WILMORE 4600 NORTH KENMORE AVENUE

uptown / chicago, il

## GROUND LEVEL RETAIL SITE PLAN - SINGLE TENANT



### SITE DETAILS

2,621 SF



# THE WILMORE 4600 NORTH KENMORE AVENUE

uptown / chicago, il

## GROUND LEVEL RETAIL SITE PLAN - DEMISED



### SITE DETAILS

Retail A: 1,605 SF

Retail B: 1,016 SF





let's  
talk. **BIG**  
**IDEAS?**

**PAUL BRYANT**

Mid-America Real Estate Corporation  
630.954.7354  
PBryant@MidAmericaGrp.com

**WESTIN KANE**

Mid-America Real Estate Corporation  
630.954.7447  
WKane@MidAmericaGrp.com

**RYAN HICKS**

Mid-America Real Estate Corporation  
630.945.7326  
RHicks@MidAmericaGrp.com



**MID-AMERICA<sup>®</sup> URBAN**