

# THE OFFICES AT QUONSET POINT

75 GATE ROAD • NORTH KINGSTOWN, RHODE ISLAND

## 2<sup>ND</sup> FLOOR OFFICE SPACE - 9,218 SF



**LOCATED ADJACENT TO THE  
LARGEST BUSINESS COMMUNITY  
IN RHODE ISLAND  
QUONSET INDUSTRIAL PARK**  
*with over 14,000 employees across 239 companies*

	1-MILE	3-MILE	5-MILE
Total Businesses	223	1,116	1,937



**TRANSFORM THIS  
INTERIOR SHELL  
INTO YOUR DREAM  
WORKSPACE**

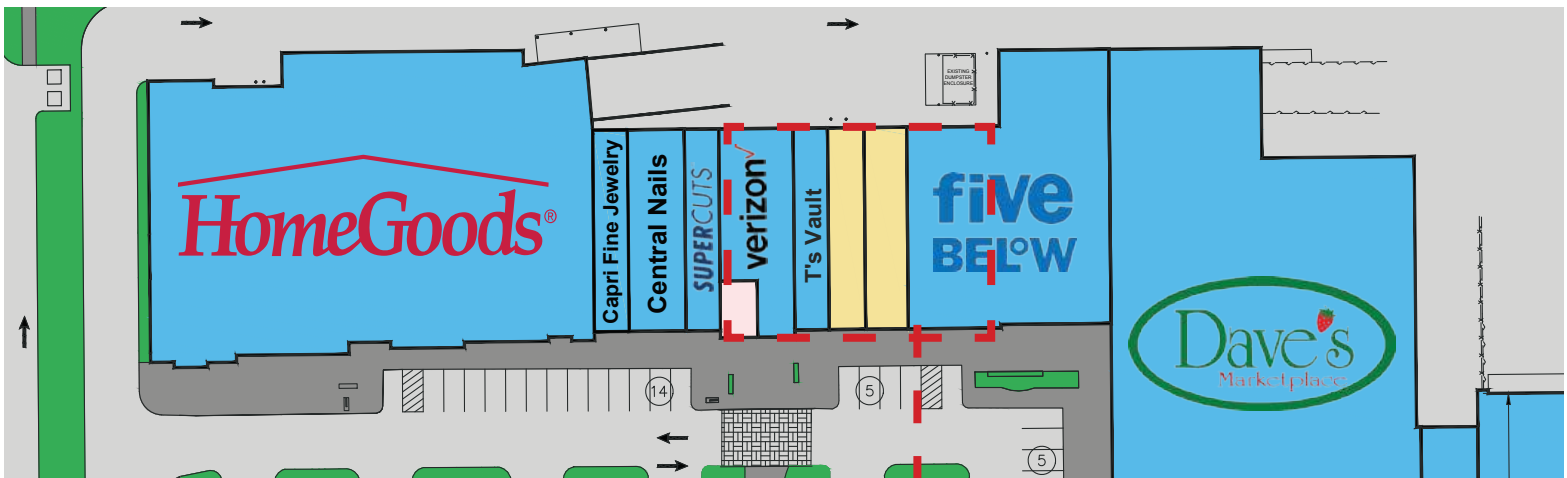
# THE OFFICES AT QUONSET POINT



MAIN ENTRANCE

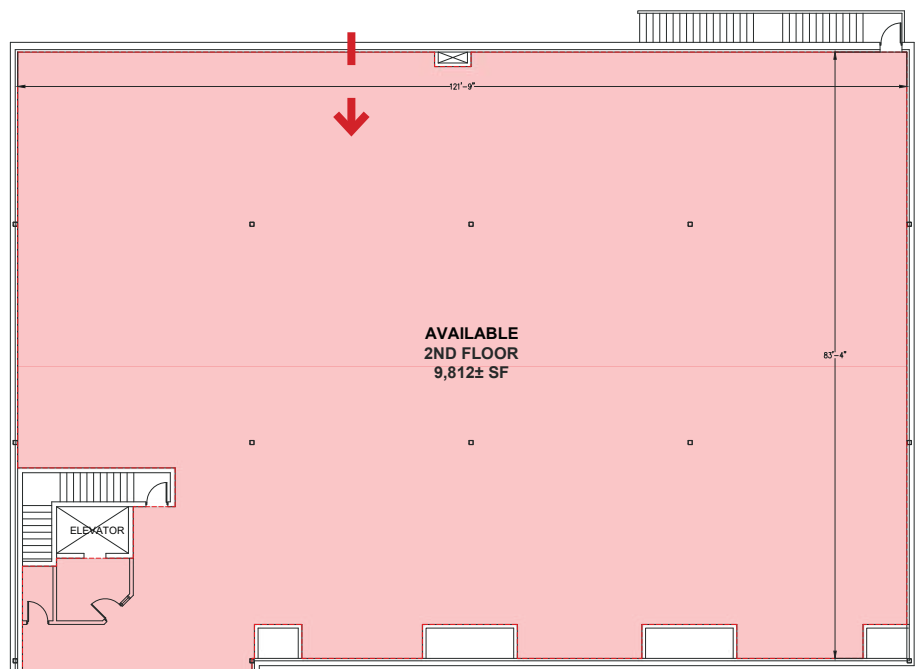


FRONT EXTERIOR



SITE PLAN

- 121'-9" x 83'-4"
- large windows provide natural light
- elevator for handicap access



AVAILABLE  
2ND FLOOR  
9,812± SF



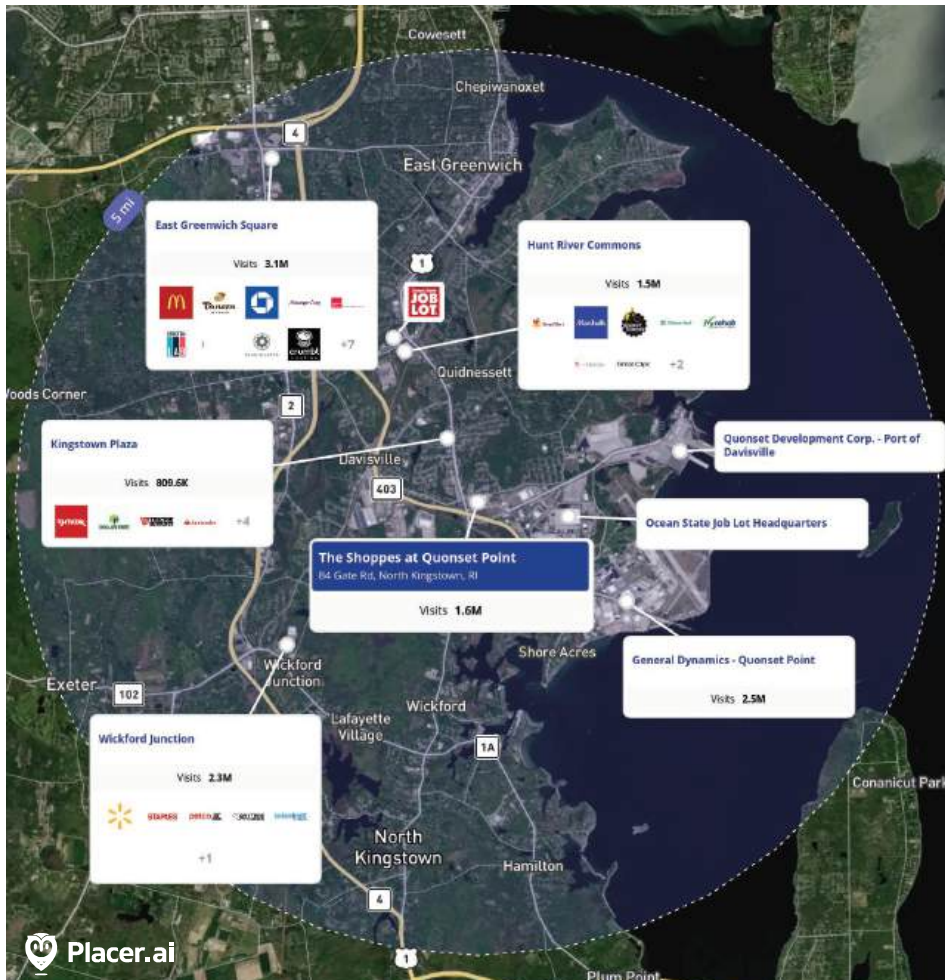


1414 Atwood Avenue • Johnston, RI • 02919 • 401.273.6800 • [www.CarpionatoGroup.com](http://www.CarpionatoGroup.com)

## LOCATION & DEMOGRAPHICS

LAT/LON	GLA	PARKING	
41.6058/-71.4507	167,772 SF	1,062	
TRAFFIC COUNT		CARS/DAY	
Route 1 (Post Road)		62,525	
Route 403		21,874	
2024	1-MILE	3-MILE	5-MILE
Estimated Population	3,858	22,914	41,894
Estimated Average Household Income	\$113,092	\$139,348	\$165,369

## TRADE MAP



Data based on STI Popstats 2024

## CONTACT



**Joe Pierik**

401.273.6800 X 126  
[JPierik@carpionatogroup.com](mailto:JPierik@carpionatogroup.com)



**Peter Flynn**

401.273.6800 X 141  
[PFlynn@carpionatogroup.com](mailto:PFlynn@carpionatogroup.com)

**MORE INFO**  
*Scan Here*

