

# RETAIL/MEDICAL FOR LEASE ROBERT'S FIELD SHOPPING CENTER

721 Hanover Pike, Hampstead, MD 21074

Available: 1,850 - 3,200 SF



## LISTING DATA

**AVAILABLE SF:** 1,850 - 3,200 SF

**TOTAL SF:** 7,390 SF

## ECONOMIC DATA

**LEASE RATE:** \$15.00 SF/yr (NNN)

## PROPERTY INFORMATION

**COUNTY:** Carroll

**MARKET:** Baltimore

**SUBMARKET:** Carroll County

## BUILDING DATA

**TOTAL BUILDING SF:** 81,255 SF

**YEAR BUILT:** 1991

**ZONING:** GB

## PROPERTY OVERVIEW

Grocery anchored retail center, prime location to establish nail salon. Additional retail and medical space opportunities in the underserved area of Hampstead. Second generation restaurant space, dog grooming, dry cleaner, and more...

## LOCATION OVERVIEW

3 Star Retail Storefront (Neighborhood Center) located directly off Hanover Pike in Hampstead in growing area of Carroll County

## PROPERTY HIGHLIGHTS

- Grocery anchored Retail Center
- Perfect opportunity to build- out nail salon in high traffic location
- Prime Hanover Pike location with 12,000+ vehicles per day
- Adjacent to existing medical providers, bank and US Postal Service
- Abundant parking field

**Bill Harrison**  
Senior Vice President  
443.741.4045  
bharrison@lee-associates.com

**Ben Brooks**  
Vice President  
443.741.4053  
bbrooks@lee-associates.com

All information furnished regarding property for sale, rental or financing is from sources deemed reliable, but no warranty or representation is made to the accuracy thereof and same is submitted to errors, omissions, change of price, rental or other conditions prior to sale, lease or financing or withdrawal without notice. No liability of any kind is to be imposed on the broker herein.

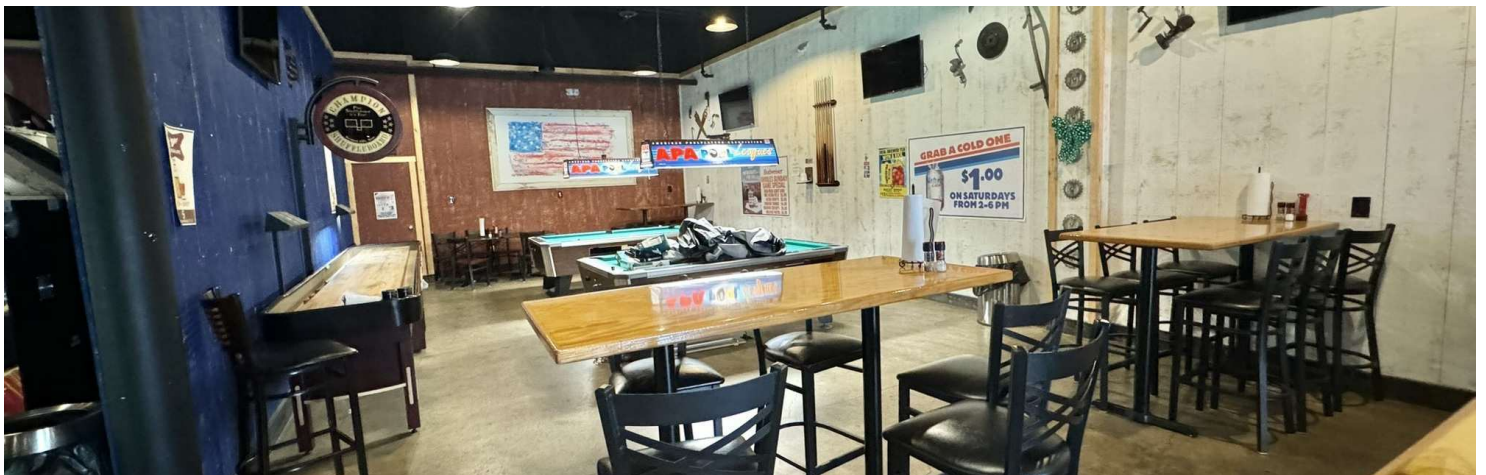


# RETAIL/MEDICAL FOR LEASE ROBERT'S FIELD SHOPPING CENTER

721 Hanover Pike, Hampstead, MD 21074

Available: 1,850 - 3,200 SF

**LEE & ASSOCIATES**  
COMMERCIAL REAL ESTATE SERVICES



**Bill Harrison**  
Senior Vice President  
443.741.4045  
bharrison@lee-associates.com

**Ben Brooks**  
Vice President  
443.741.4053  
bbrooks@lee-associates.com

All information furnished regarding property for sale, rental or financing is from sources deemed reliable, but no warranty or representation is made to the accuracy thereof and same is submitted to errors, omissions, change of price, rental or other conditions prior to sale, lease or financing or withdrawal without notice. No liability of any kind is to be imposed on the broker herein.

# RETAIL/MEDICAL FOR LEASE

## ROBERT'S FIELD SHOPPING CENTER

721 Hanover Pike, Hampstead, MD 21074

Available: 1,850 - 3,200 SF



### LEASE INFORMATION

Lease Type:	NNN	Lease Term:	Negotiable
Total Space:	1,850 - 3,200 SF	Lease Rate:	\$15.00 SF/yr

### AVAILABLE SPACES

SUITE	SIZE (SF)	LEASE TYPE	LEASE RATE	DESCRIPTION
Suite 125	2,942 SF	NNN	\$15.00 SF/yr	Open layout
Suite 127	2,224 SF	NNN	\$15.00 SF/yr	Former Dollar Store
Suite 145	3,200 SF	NNN	\$15.00 SF/yr	Retail space with plumbing throughout
Suite 157	1,850 SF	NNN	\$15.00 SF/yr	Showroom and office space. Former physical therapist

**Bill Harrison**  
Senior Vice President  
443.741.4045  
bharrison@lee-associates.com

**Ben Brooks**  
Vice President  
443.741.4053  
bbrooks@lee-associates.com

All information furnished regarding property for sale, rental or financing is from sources deemed reliable, but no warranty or representation is made to the accuracy thereof and same is submitted to errors, omissions, change of price, rental or other conditions prior to sale, lease or financing or withdrawal without notice. No liability of any kind is to be imposed on the broker herein.

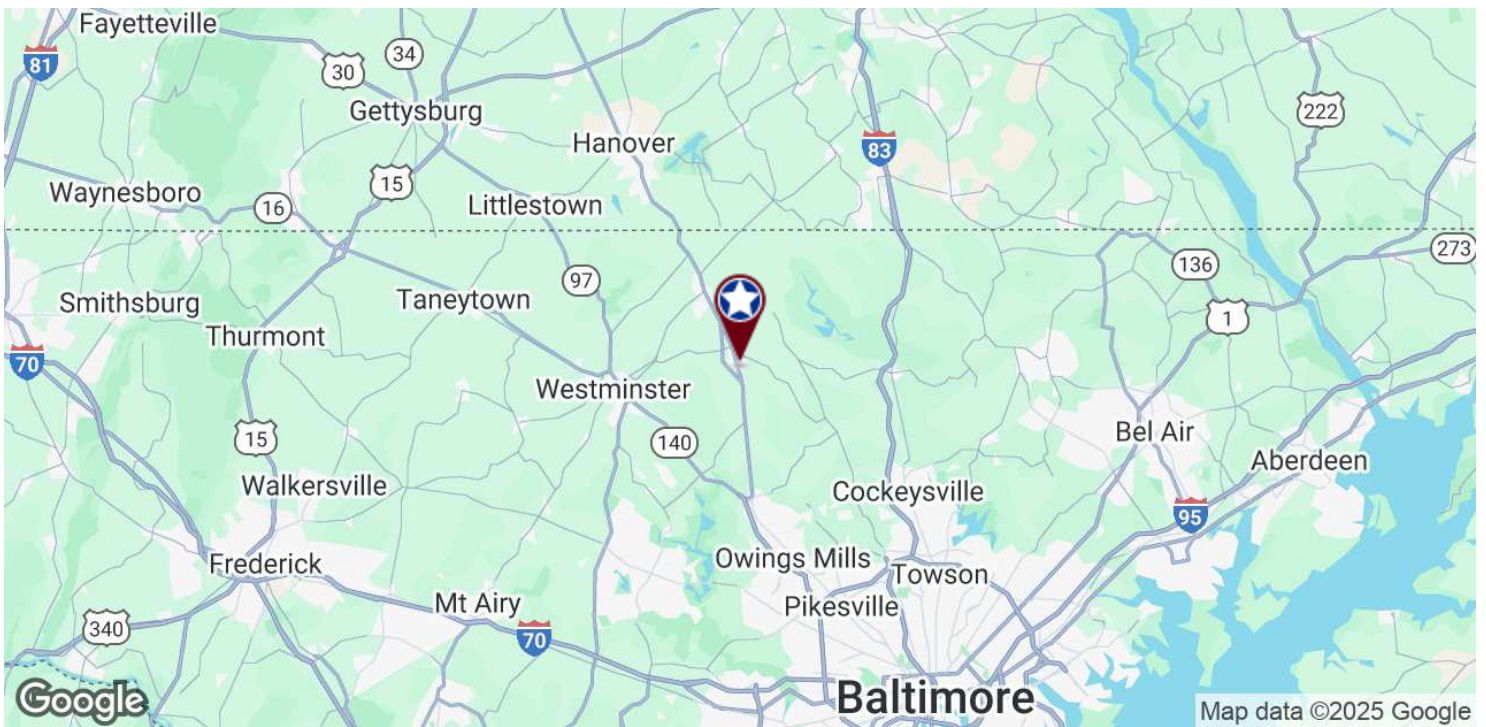
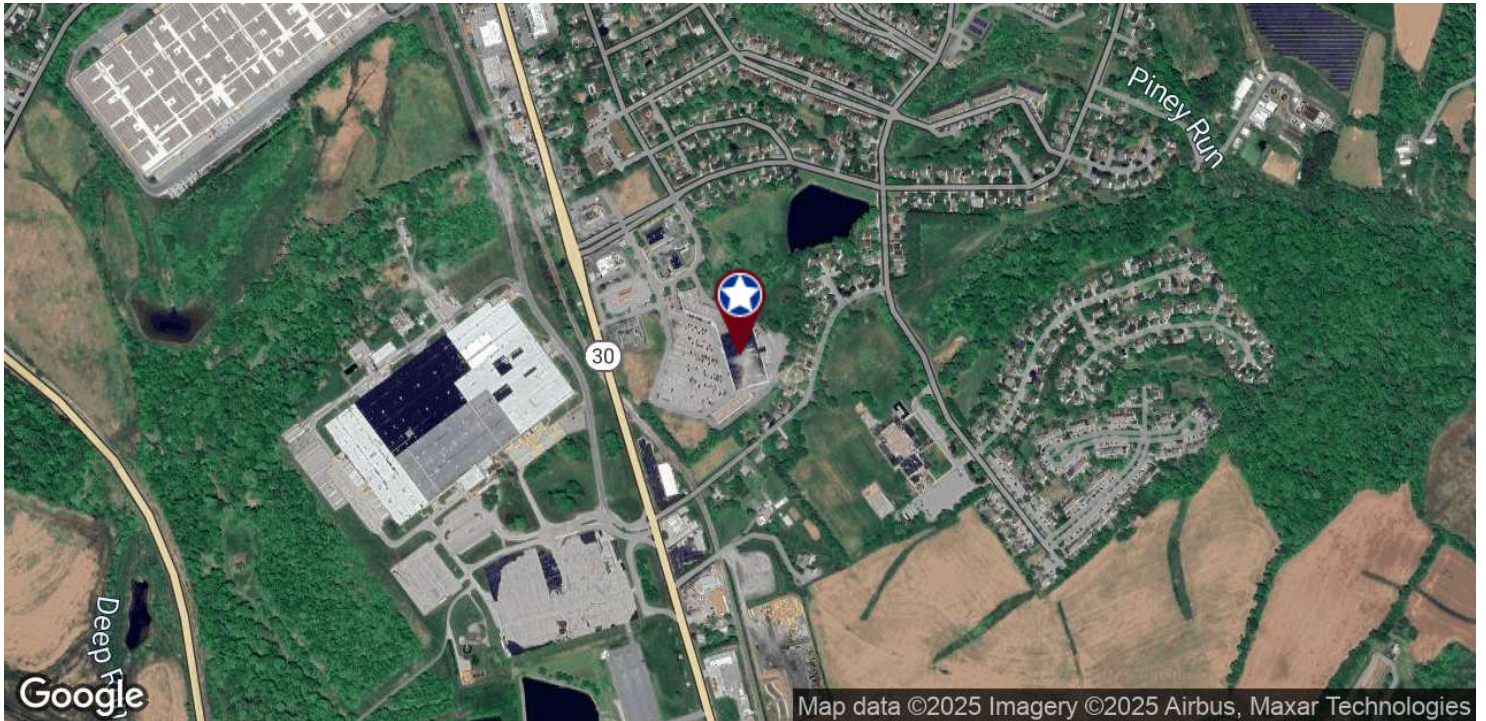


# RETAIL/MEDICAL FOR LEASE ROBERT'S FIELD SHOPPING CENTER

721 Hanover Pike, Hampstead, MD 21074

Available: 1,850 - 3,200 SF

**LEE & ASSOCIATES**  
COMMERCIAL REAL ESTATE SERVICES



**Bill Harrison**  
Senior Vice President  
443.741.4045  
bharrison@lee-associates.com

**Ben Brooks**  
Vice President  
443.741.4053  
bbrooks@lee-associates.com

All information furnished regarding property for sale, rental or financing is from sources deemed reliable, but no warranty or representation is made to the accuracy thereof and same is submitted to errors, omissions, change of price, rental or other conditions prior to sale, lease or financing or withdrawal without notice. No liability of any kind is to be imposed on the broker herein.

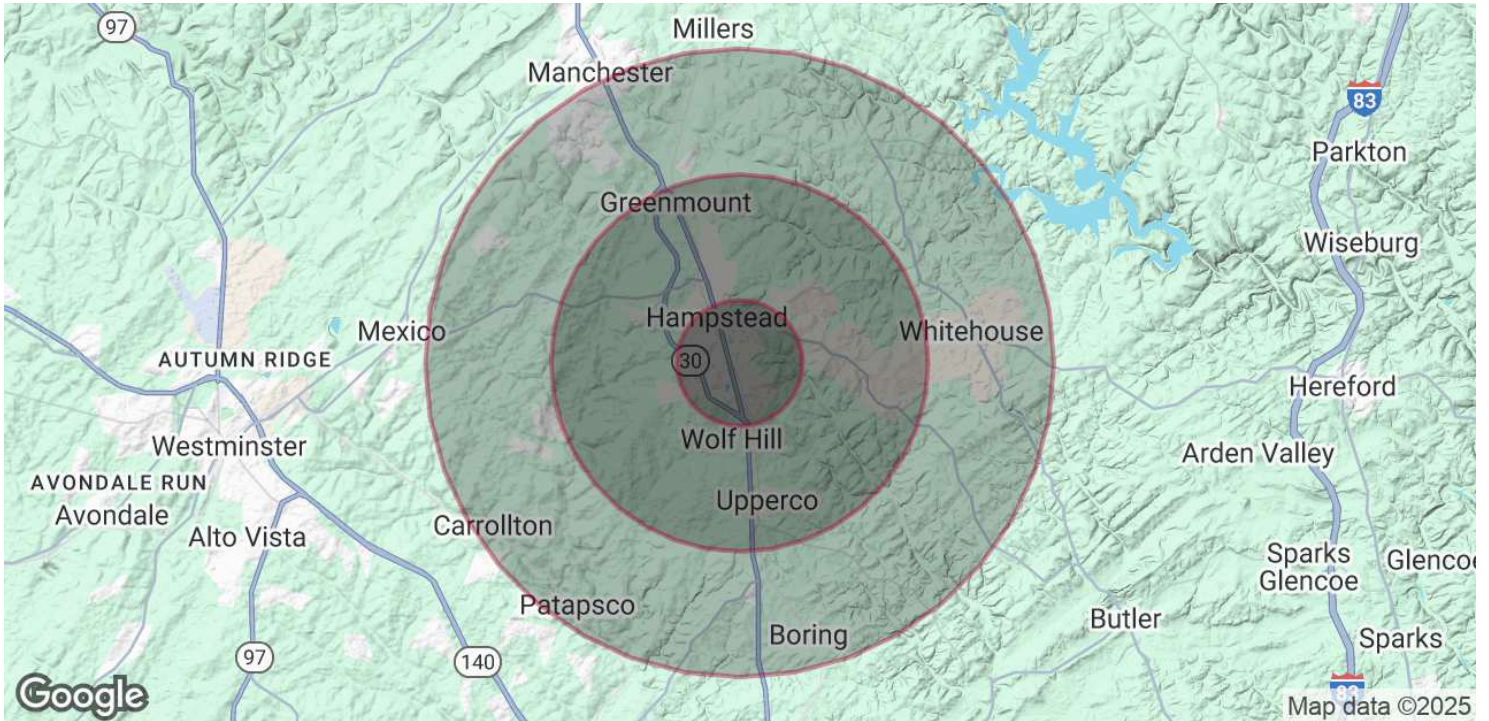


# RETAIL/MEDICAL FOR LEASE

## ROBERT'S FIELD SHOPPING CENTER

721 Hanover Pike, Hampstead, MD 21074

Available: 1,850 - 3,200 SF



### POPULATION

	1 MILE	3 MILES	5 MILES
Total Population	4,828	11,844	24,385
Average Age	32.3	37.8	39.6
Average Age (Male)	32.5	37.4	39.1
Average Age (Female)	31.2	37.9	40.2

### HOUSEHOLDS & INCOME

	1 MILE	3 MILES	5 MILES
Total Households	1,889	4,436	8,957
# of Persons per HH	2.6	2.7	2.7
Average HH Income	\$78,551	\$87,611	\$93,456
Average House Value	\$380,775	\$396,215	\$407,604

\* Demographic data derived from 2020 ACS - US Census

**Bill Harrison**  
Senior Vice President  
443.741.4045  
bharrison@lee-associates.com

**Ben Brooks**  
Vice President  
443.741.4053  
bbrooks@lee-associates.com

All information furnished regarding property for sale, rental or financing is from sources deemed reliable, but no warranty or representation is made to the accuracy thereof and same is submitted to errors, omissions, change of price, rental or other conditions prior to sale, lease or financing or withdrawal without notice. No liability of any kind is to be imposed on the broker herein.