



DIAMOND PROPERTY  
MANAGEMENT

# OFFICE BUILDING

100 S. Bedford Rd. | Mt. Kisco, NY



## BUILDING FEATURES

- Class A Office Park
- Build-to-suit Offices
- On-site Cafe & Day Care
- Card Access 24/7
- Near Saw Mill Parkway, I-684
- Steps to downtown Mt. Kisco
- Near Metro North Train Station
- Luxury Executive Suite



WINNER OF BOMA BUILDING  
OF THE YEAR AWARD

For more information about features & amenities, visit [dpmgt.com](http://dpmgt.com).

## AVAILABLE SPACE

1st Floor	4,525 SF
2nd Floor	3,000 - 19,480 SF
	5,102 - 9,412 SF
3rd Floor	3,410 - 9,472 SF

## POSSESSION

Immediate

## ASKING RATE

\$30.00 Gross



For more information, visit  
[dpmgt.com](http://dpmgt.com) or contact:

**CJ ROCKETT**

914-773-6264  
[cjrockett@dpmgt.com](mailto:cjrockett@dpmgt.com)

**MARK BLANDFORD**

914-773-6242  
[mark@dpmgt.com](mailto:mark@dpmgt.com)

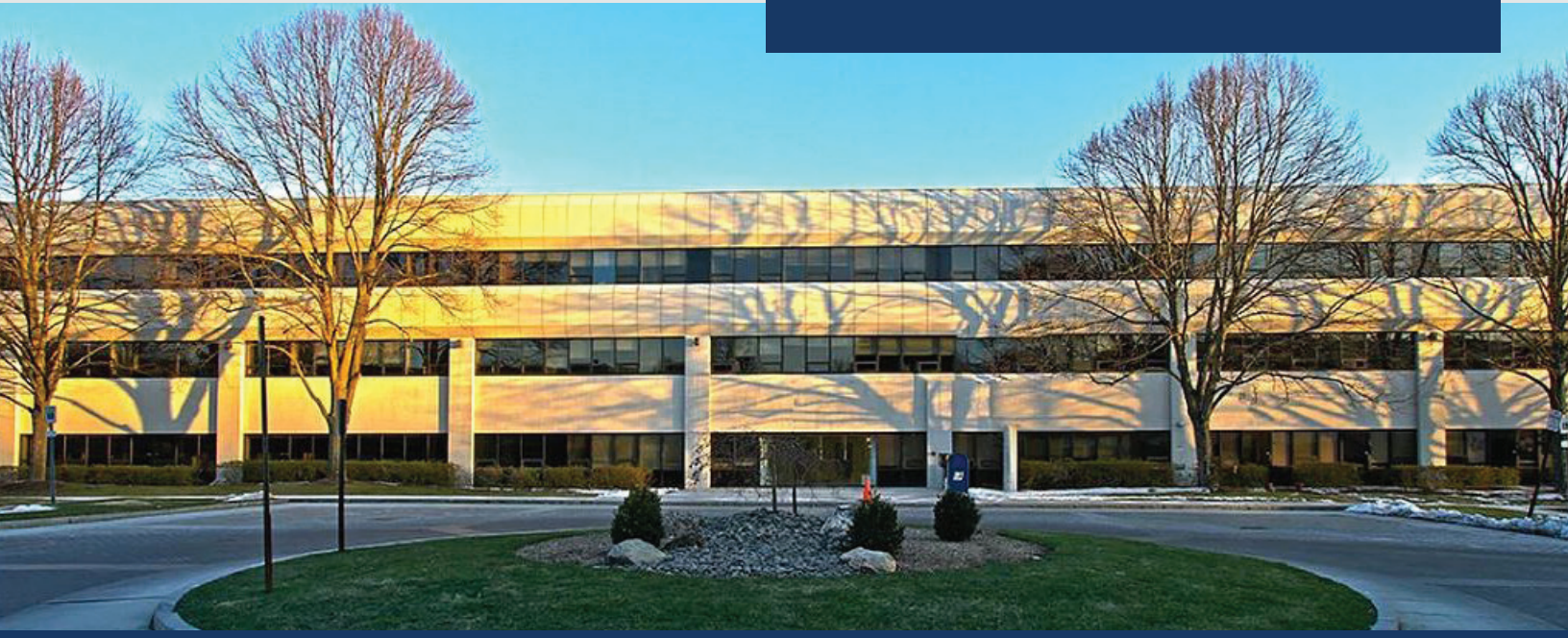
The information contained herein has been obtained through sources deemed reliable but cannot be guaranteed as to its accuracy. Any information of special interest should be obtained through independent verification.



DIAMOND PROPERTY  
MANAGEMENT

# OFFICE BUILDING

100 S. Bedford Rd. | Mt. Kisco, NY



## PROPERTY OVERVIEW

100 South Bedford Road is the premiere full service luxury class A office building in Northern Westchester. It features an on-site cafe, daycare, management office and beautiful outdoor patio. Our recently renovated white marble lobby delivers a timeless and professional experience. Located in what is considered Northern Westchester's hub, this property is minutes to the MTA, I-684, Saw Mill Parkway and Mount Kisco's upscale shops and eateries.

## LOCATION OVERVIEW

Located within walking distance to Northern Westchester Hospital, Downtown Mount Kisco and Metro North Train Station. Easy access to I-684, Saw Mill River & Taconic Parkways.

For more information, visit  
[dpmgt.com](http://dpmgt.com) or contact:

**CJ ROCKETT**

914-773-6264

[cjrockett@dpmgt.com](mailto:cjrockett@dpmgt.com)

**MARK BLANDFORD**

914-773-6242

[mark@dpmgt.com](mailto:mark@dpmgt.com)

The information contained herein has been obtained through sources deemed reliable but cannot be guaranteed as to its accuracy. Any information of special interest should be obtained through independent verification.



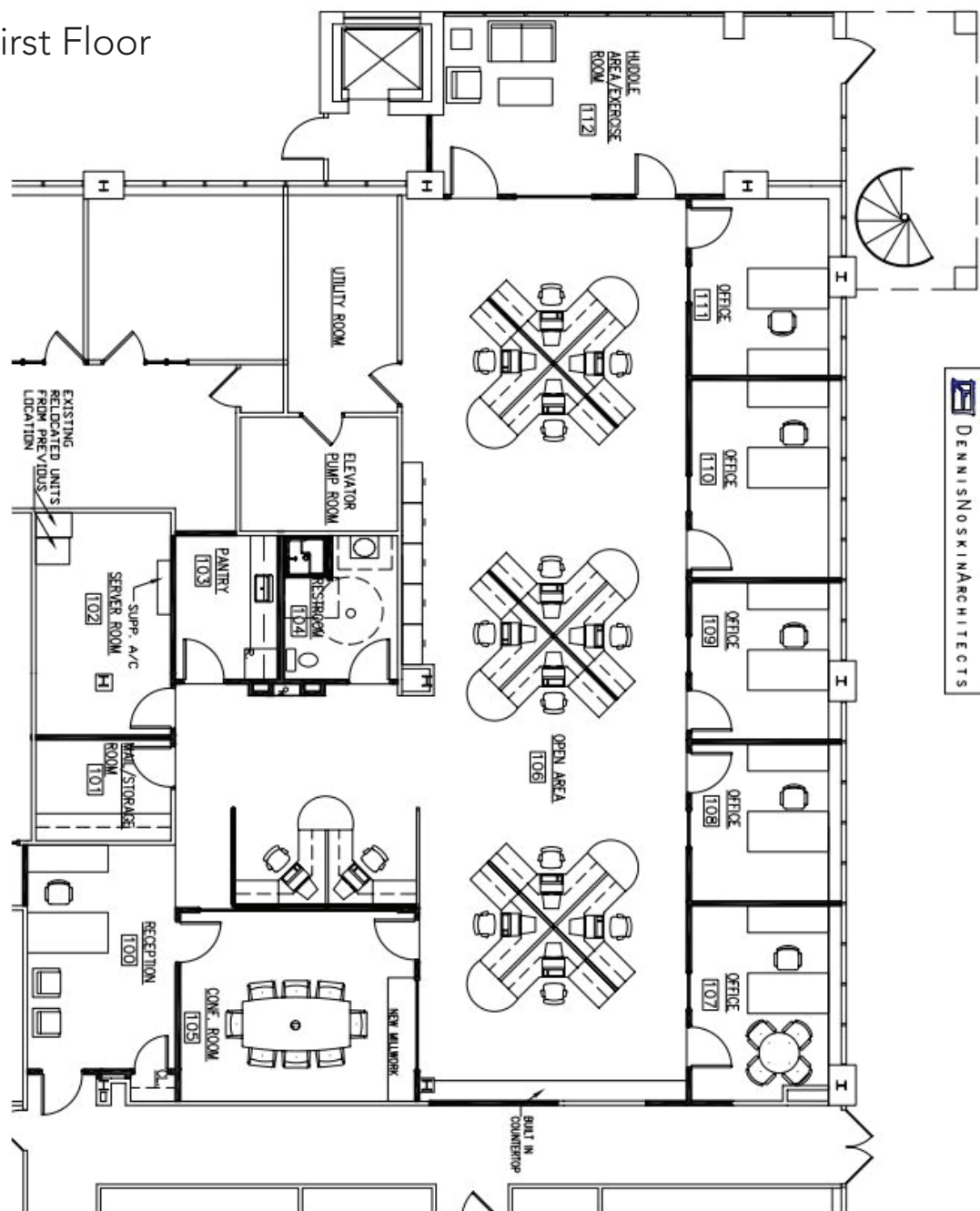


DIAMOND PROPERTY  
MANAGEMENT

# OFFICE BUILDING

100 S. Bedford Rd. | Mt. Kisco, NY

Floor Plan: First Floor



For more information, visit  
[dpmgt.com](http://dpmgt.com) or contact:

**CJ ROCKETT**

914-773-6264

[cjrockett@dpmgt.com](mailto:cjrockett@dpmgt.com)

**MARK BLANDFORD**

914-773-6242

[mark@dpmgt.com](mailto:mark@dpmgt.com)

The information contained herein has been obtained through sources deemed reliable but cannot be guaranteed as to its accuracy. Any information of special interest should be obtained through independent verification.

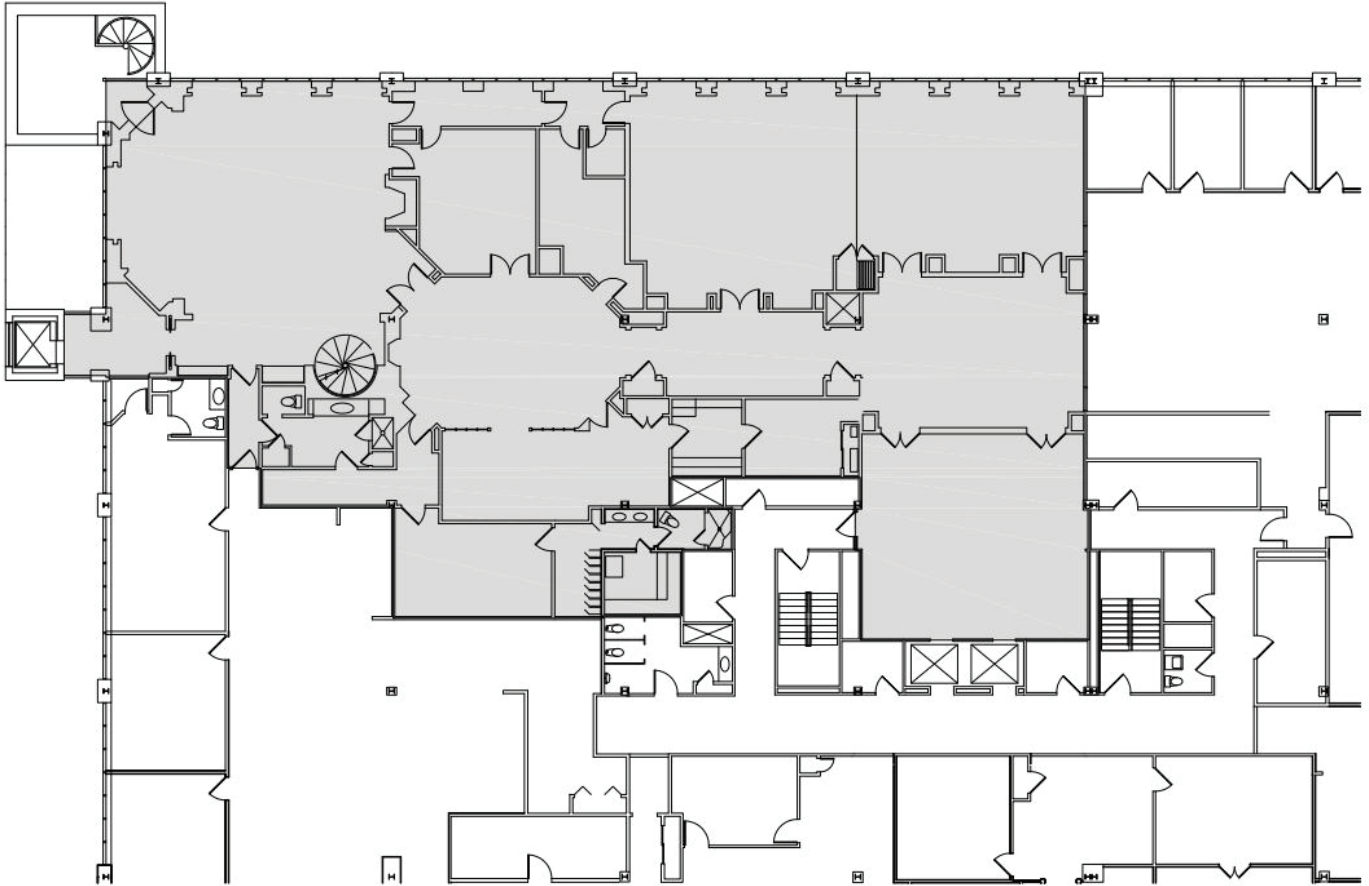


DIAMOND PROPERTY  
MANAGEMENT

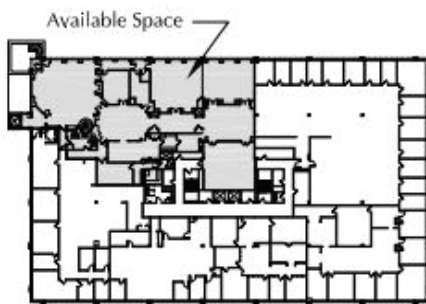
# OFFICE BUILDING

100 S. Bedford Rd. | Mt. Kisco, NY

Floor Plan: Second Floor (9,412 SF)



Key Plan, Second Floor



For more information, visit  
[dpmgt.com](http://dpmgt.com) or contact:

**CJ ROCKETT**

914-773-6264  
[cjrockett@dpmgt.com](mailto:cjrockett@dpmgt.com)

**MARK BLANDFORD**

914-773-6242  
[mark@dpmgt.com](mailto:mark@dpmgt.com)

The information contained herein has been obtained through sources deemed reliable but cannot be guaranteed as to its accuracy. Any information of special interest should be obtained through independent verification.

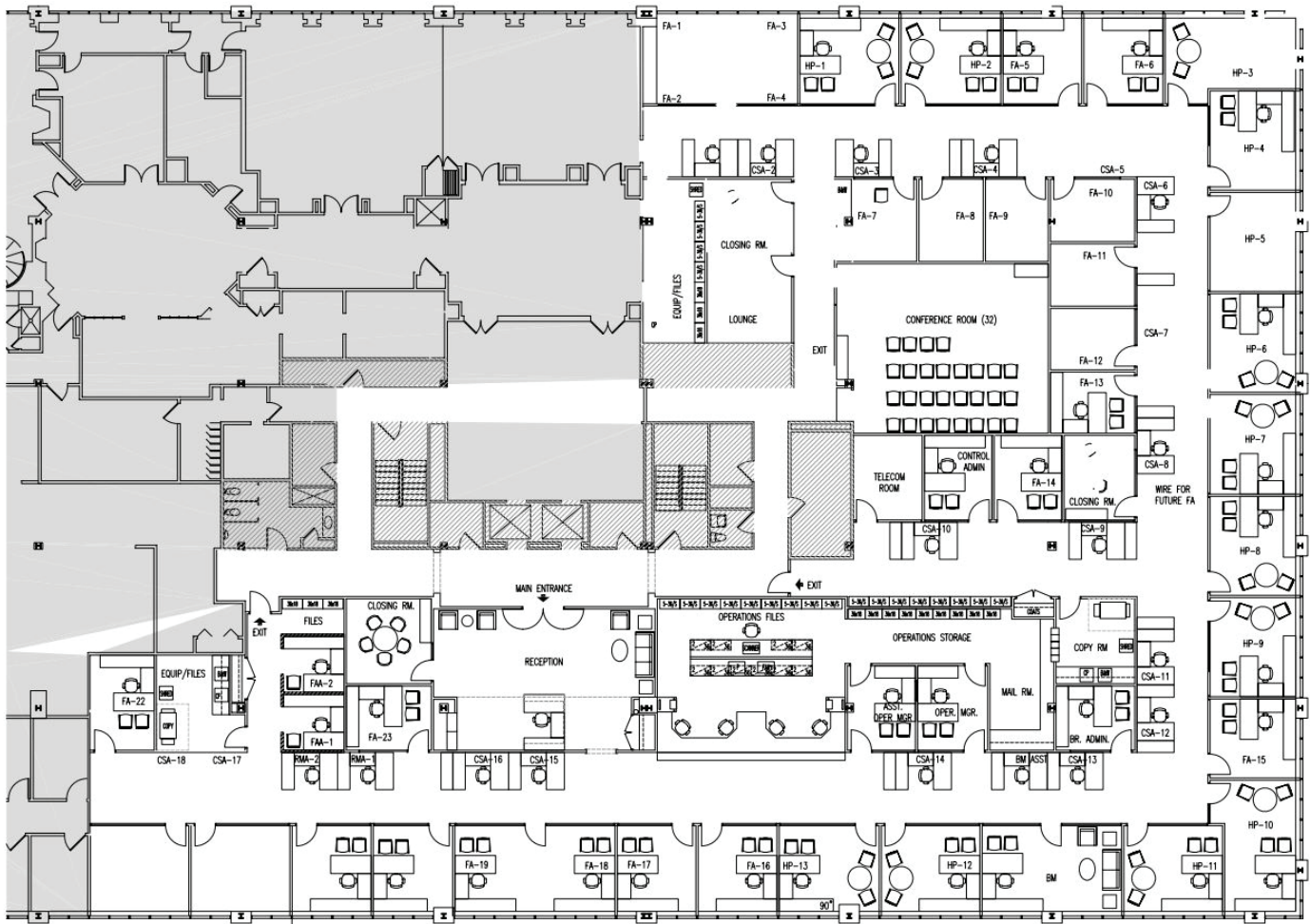


DIAMOND PROPERTY  
MANAGEMENT

# OFFICE BUILDING

100 S. Bedford Rd. | Mt. Kisco, NY

## Floor Plan: Second Floor (19,480 SF)



For more information, visit  
[dpmgt.com](http://dpmgt.com) or contact:

### CJ ROCKETT

914-773-6264

[cjrockett@dpmgt.com](mailto:cjrockett@dpmgt.com)

### MARK BLANDFORD

914-773-6242

[mark@dpmgt.com](mailto:mark@dpmgt.com)

The information contained herein has been obtained through sources deemed reliable but cannot be guaranteed as to its accuracy. Any information of special interest should be obtained through independent verification.

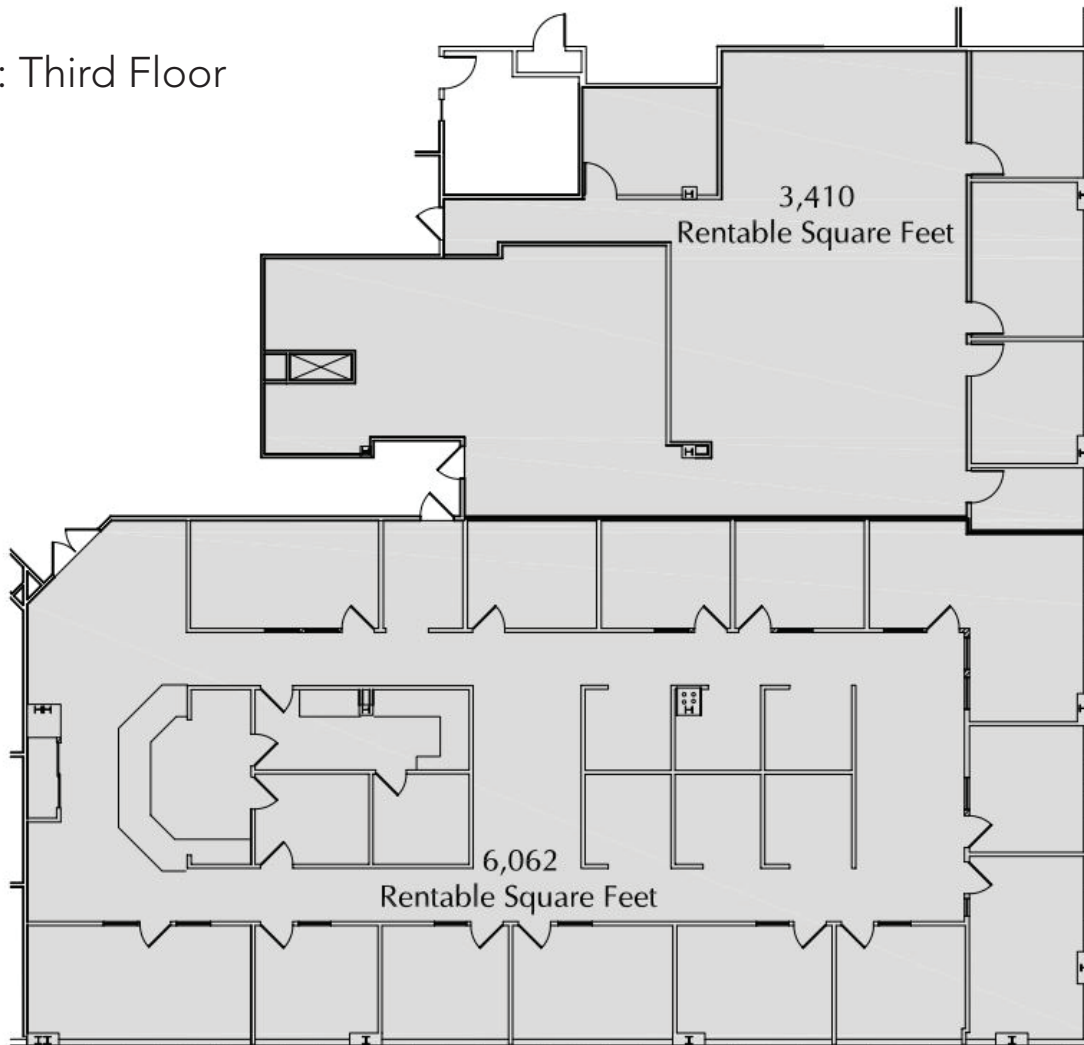


DIAMOND PROPERTY  
MANAGEMENT

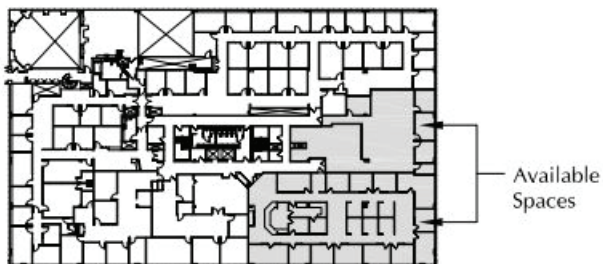
# OFFICE BUILDING

100 S. Bedford Rd. | Mt. Kisco, NY

Floor Plan: Third Floor



Key Plan, Third Floor



For more information, visit  
[dpmgt.com](http://dpmgt.com) or contact:

**CJ ROCKETT**

914-773-6264

[cjrockett@dpmgt.com](mailto:cjrockett@dpmgt.com)

**MARK BLANDFORD**

914-773-6242

[mark@dpmgt.com](mailto:mark@dpmgt.com)

The information contained herein has been obtained through sources deemed reliable but cannot be guaranteed as to its accuracy. Any information of special interest should be obtained through independent verification.





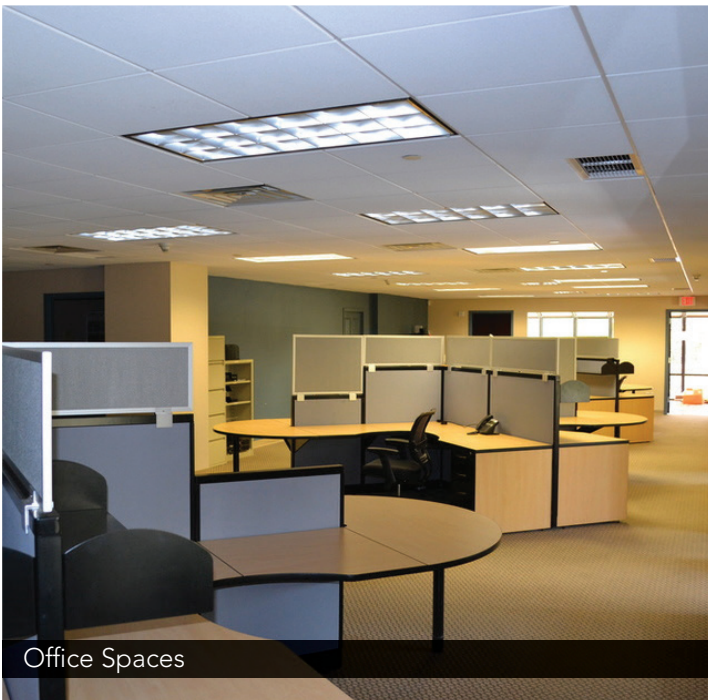
DIAMOND PROPERTY  
MANAGEMENT

# OFFICE BUILDING

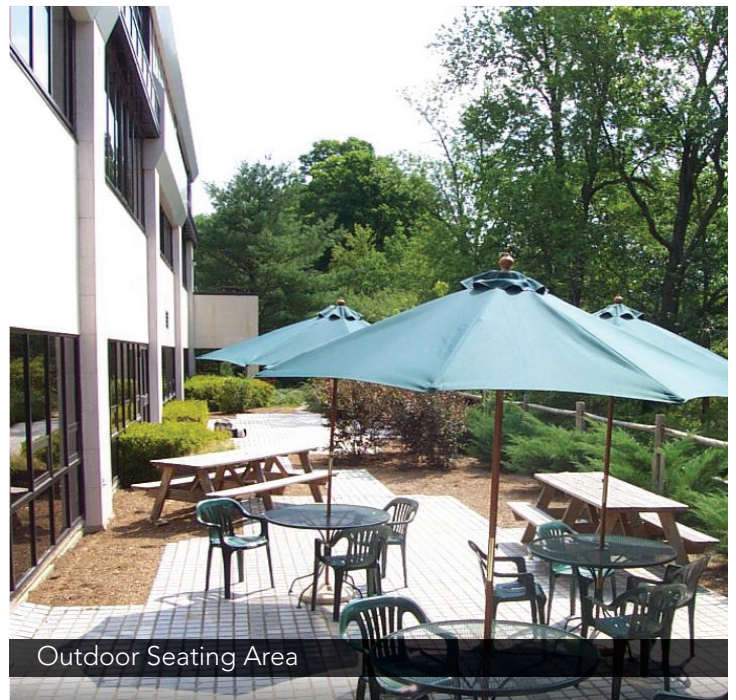
100 S. Bedford Rd. | Mt. Kisco, NY



Grand Executive Suite



Office Spaces



Outdoor Seating Area

For more information, visit  
[dpmgt.com](http://dpmgt.com) or contact:

**CJ ROCKETT**

914-773-6264  
[cjrockett@dpmgt.com](mailto:cjrockett@dpmgt.com)

**MARK BLANDFORD**

914-773-6242  
[mark@dpmgt.com](mailto:mark@dpmgt.com)

The information contained herein has been obtained through sources deemed reliable but cannot be guaranteed as to its accuracy. Any information of special interest should be obtained through independent verification.