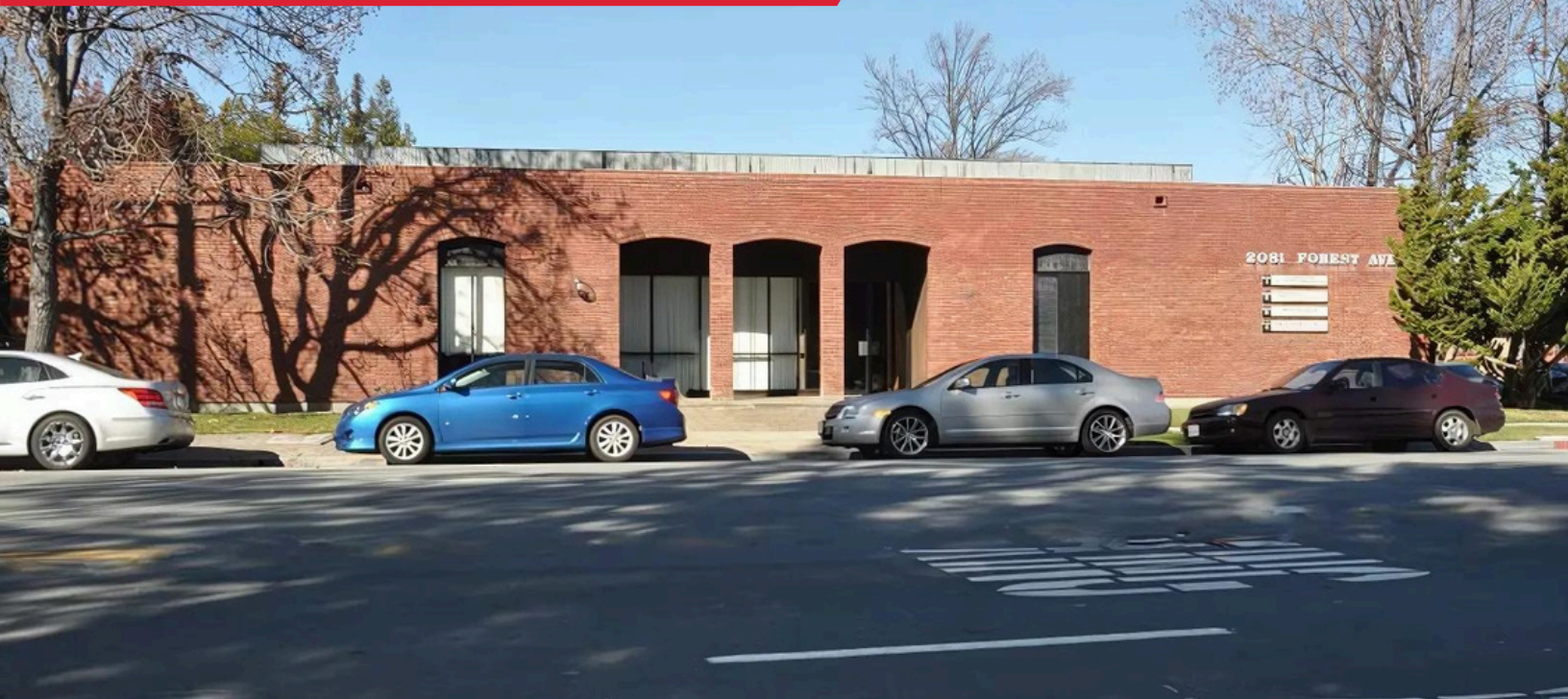


# 2081 FOREST AVENUE

SAN JOSE, CALIFORNIA 95128



## HIGHLIGHTS

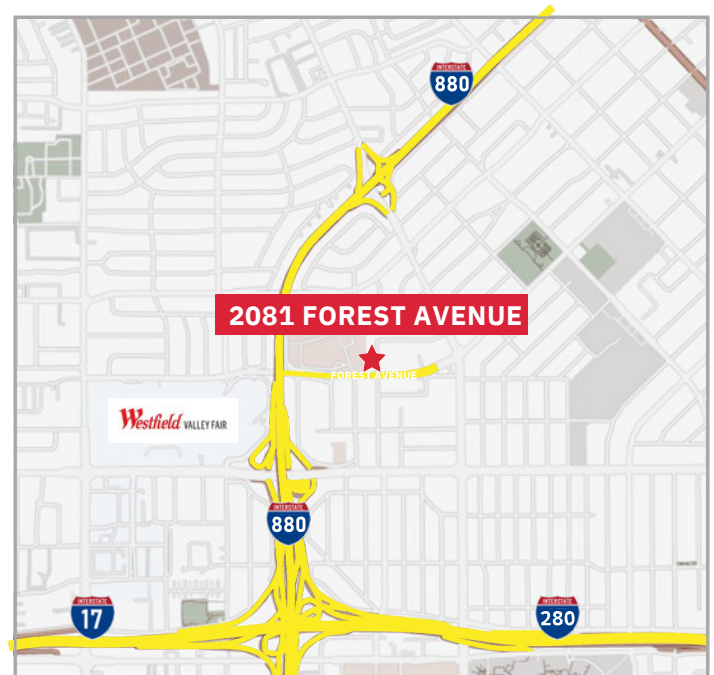
- Easy access to Hwy 17/880 & Hwy 280
- Directly adjacent to O'Connor Hospital, close to Valley Fair & Santana Row
- Tenant improvements available for qualified tenants
- Building Directory Signage

## AVAILABLE

- Suite 2: ±1,817 RSF

## LEASE RATE

- \$3.50 modified gross



**HealthMedRealty**

260 Los Gatos-Saratoga Rd., Los Gatos, CA 95030  
Lic. 01902032 | 408.217.6000  
[www.healthmedrealty.com](http://www.healthmedrealty.com)

No warranty or representation, express or implied is made as to the accuracy of the information contained herein, and the same is submitted subject to errors, omissions, changes of price, rental or other conditions, withdrawal without notice.

**For Further Information, Please Contact:**

**Jeff Petulla**

☎ 408-888-4859

✉ [jeff@healthmedrealty.com](mailto:jeff@healthmedrealty.com)

📄 Lic. 00852399

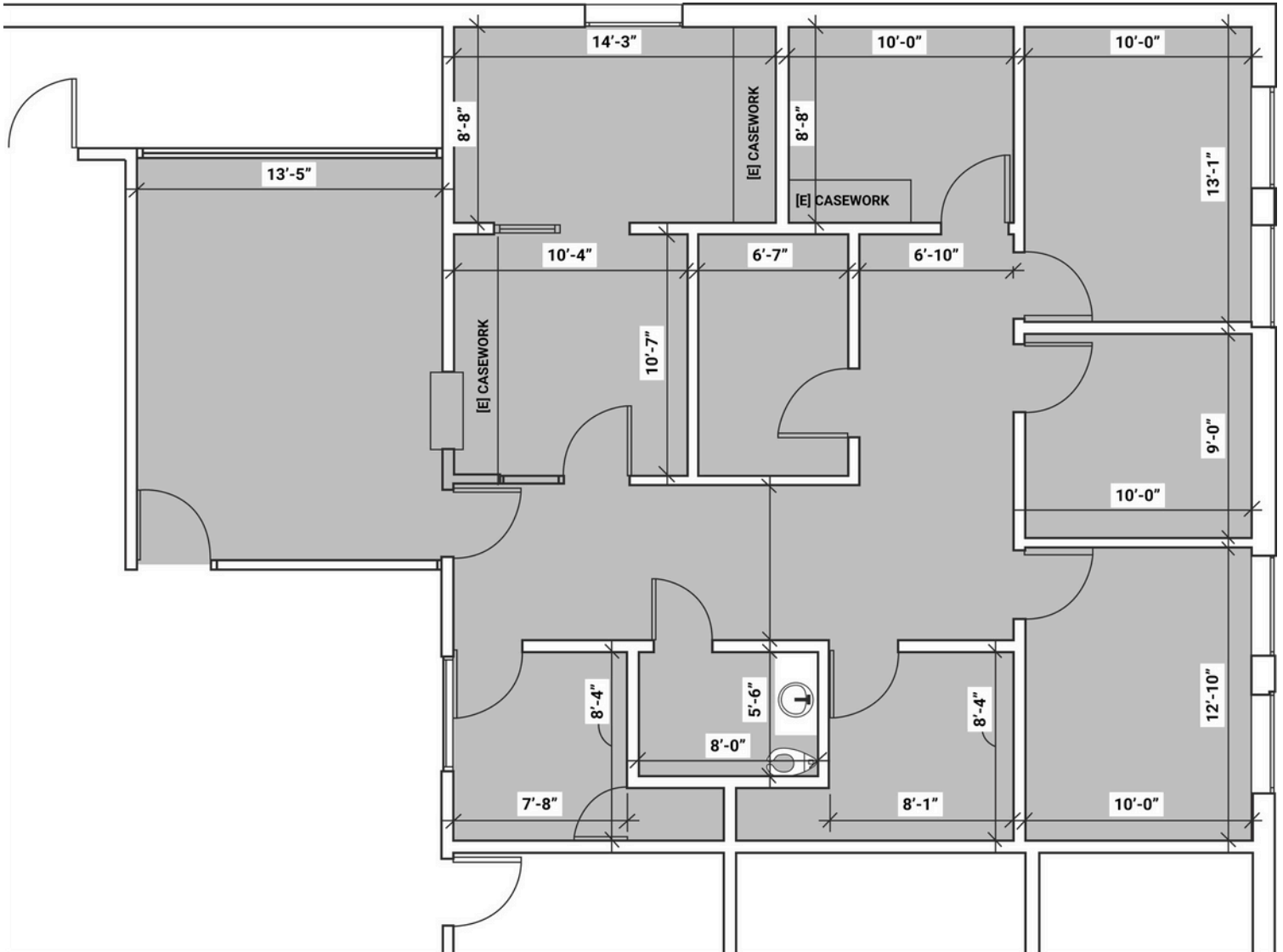


# 2081 FOREST AVENUE

SAN JOSE, CALIFORNIA 95128

## SUITE 2

±1,817 RSF



260 Los Gatos-Saratoga Rd., Los Gatos, CA 95030  
Lic. 01902032 | 408.217.6000  
www.healthmedrealty.com

No warranty or representation, express or implied is made as to the accuracy of the information contained herein, and the same is submitted subject to errors, omissions, changes of price, rental or other conditions, withdrawal without notice.

**For Further Information, Please Contact:**

**Jeff Petulla**

☎ 408-888-4859

✉ jeff@healthmedrealty.com

📄 Lic. 00852399

